

**SHINRIN-YOKU**

EMMA MONEY

# INHALE.



RENEW



PURIFYING



RECIPROCAL



ALIVE

## SHINRIN-YOKU

SHINRIN-YOKU/ FOREST  
BATHING- DRENCHING US  
IN LIFE GIVING CHEMICALS,  
CO-DESIGNING WITH  
NATURE, CHALLENGING  
OUR RELATIONSHIP WITH  
CLOTHES FOR A BETTER  
FUTURE...

TRIBE



This crowd isn't afraid of the spotlight, with a wardrobe filled with strong silhouettes and garments that grace the body, rippling through the surroundings. They are eternally overdressed and keen to relish every moment of their lavish lifestyle.



## FABRIC & COLOUR

LUSH GREENS EMULATING THE  
EPHEMERAL ATMOSPHERE OF THE  
FOREST ACCENTED WITH FLORA AND  
FAUNA AND THE DEPTH OF THE NIGHTS  
SKY.

<b>PANTONE®</b> 18-5845 TCX Lush Meadow	<b>PANTONE®</b> 11-0601 TCX Bright White	<b>PANTONE®</b> 19-3864 TCX Mazarine Blue	<b>PANTONE®</b> 12-0108 TCX Canary Green	
RGB 0 110 82 HEX #006E52	RGB 244 249 255 HEX #F4F9FF	RGB 39 60 118 HEX #273C76	RGB 214 223 201 HEX #D6DFC9	TM



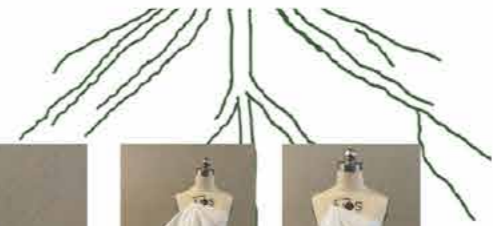


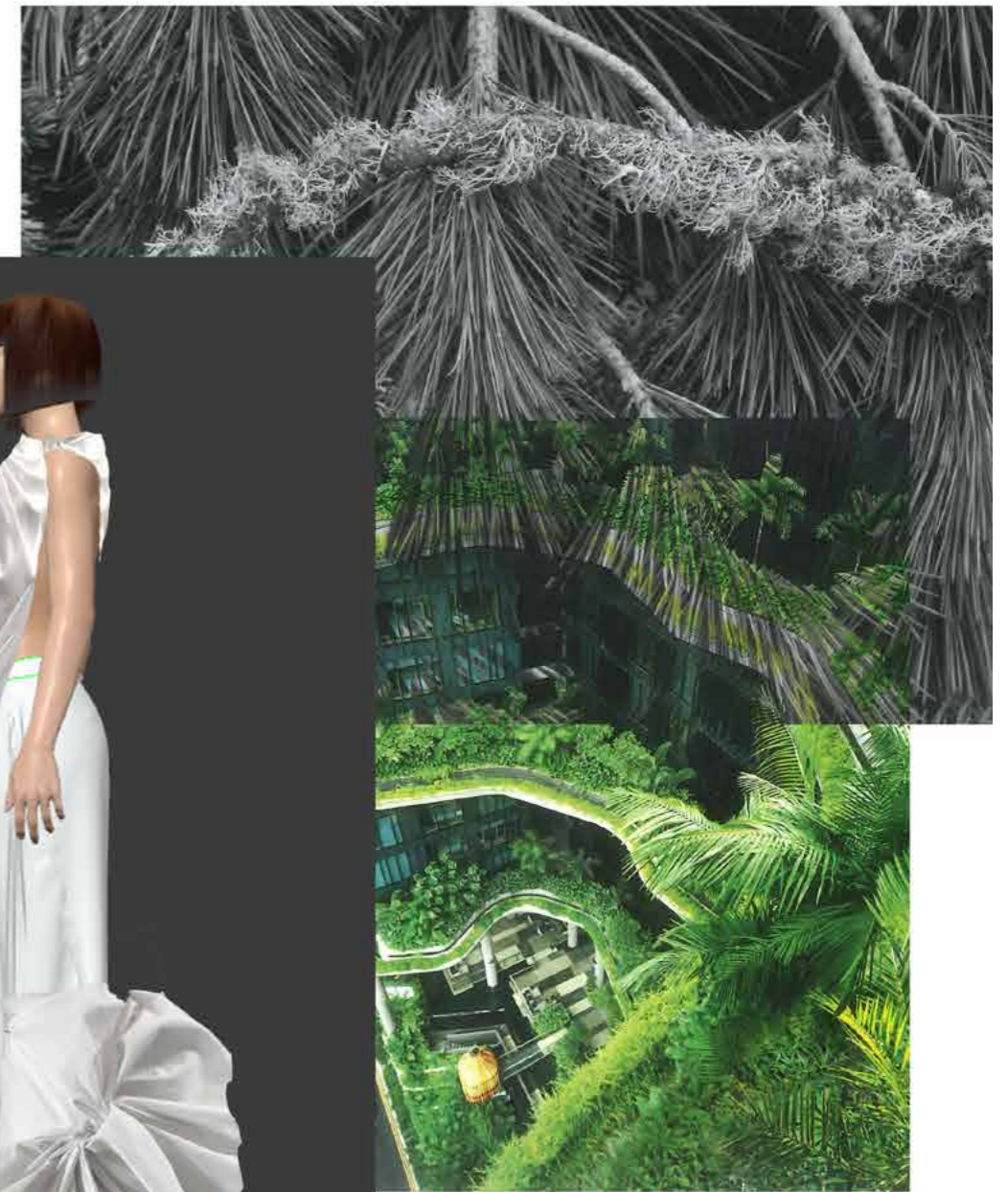
ALGAE  
BASIS

AIR  
PURIFICATION



TRANSLATIONS

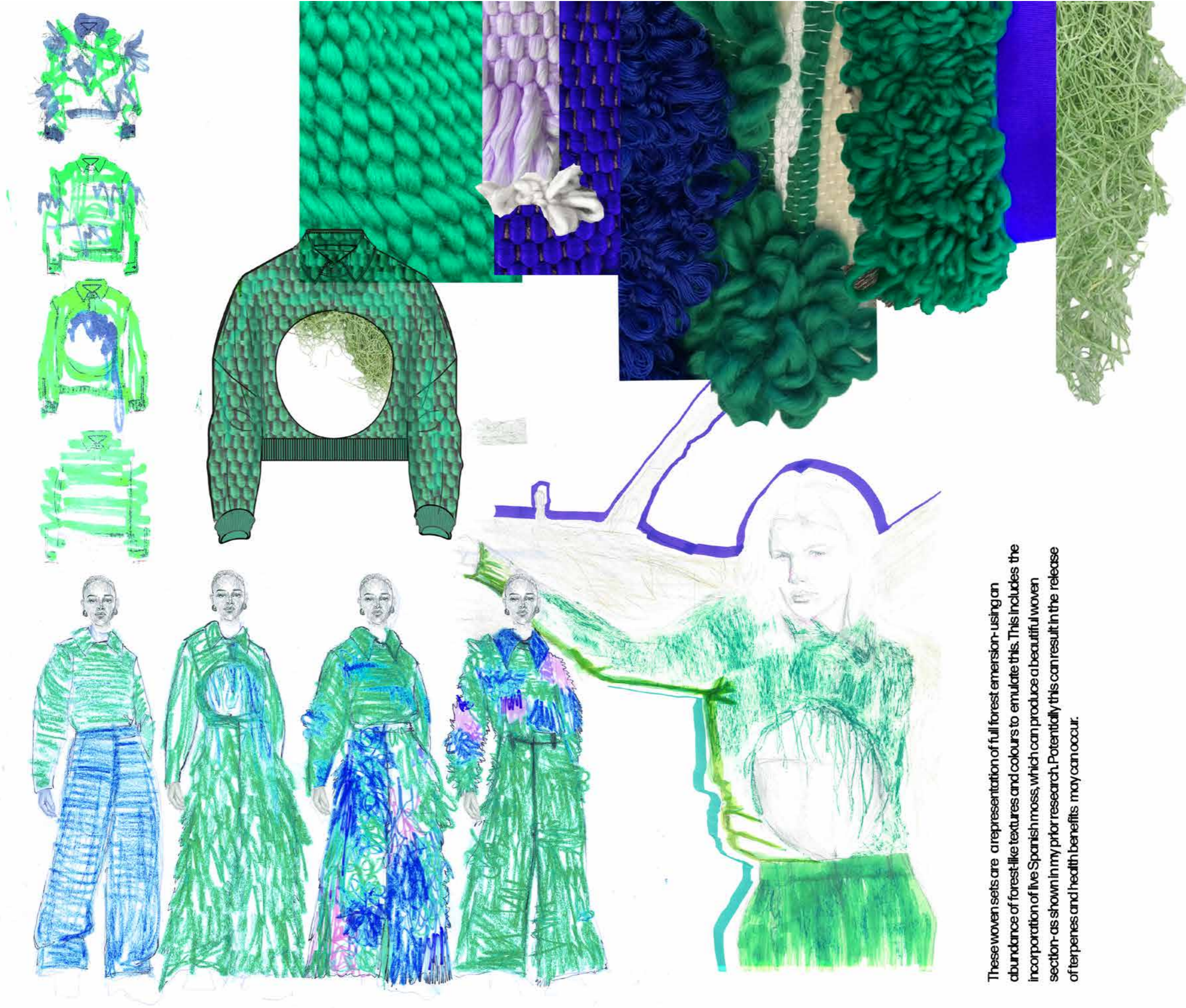




### **DRAPED TROUSERS**

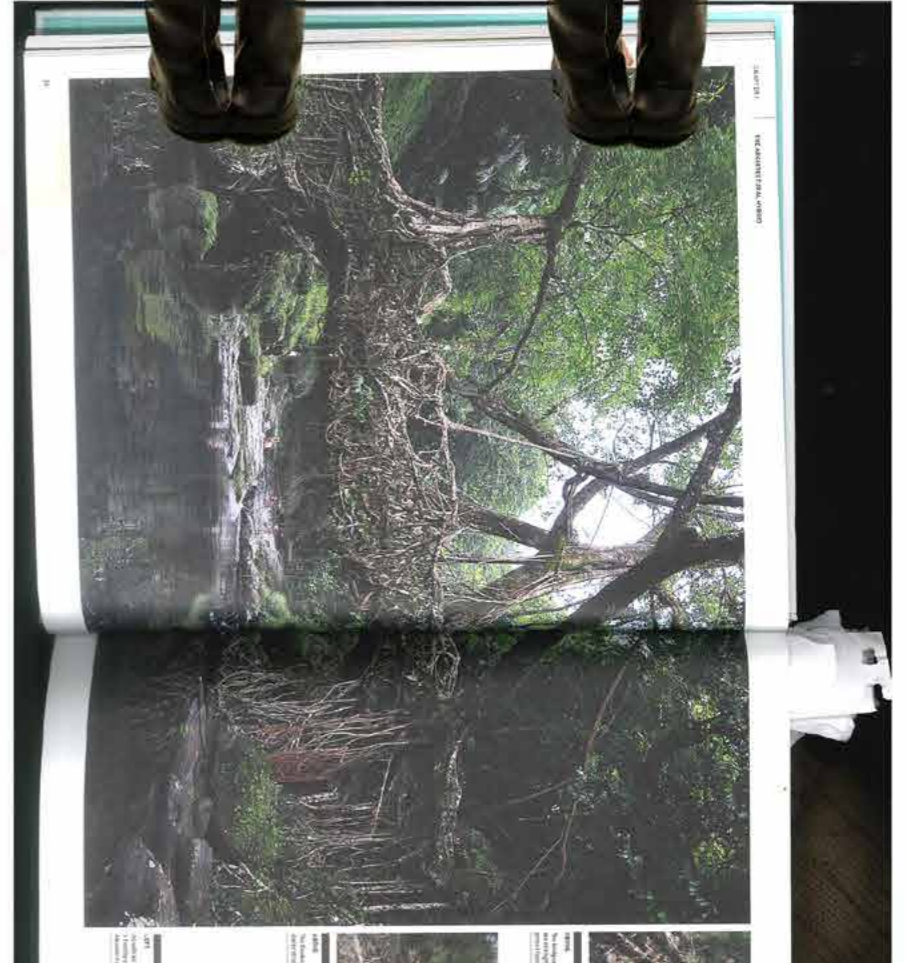
Allowing the movement and free flowing mental effects that the forest bathing provides. The white resembles the purity of nature and increase in white blood cells.

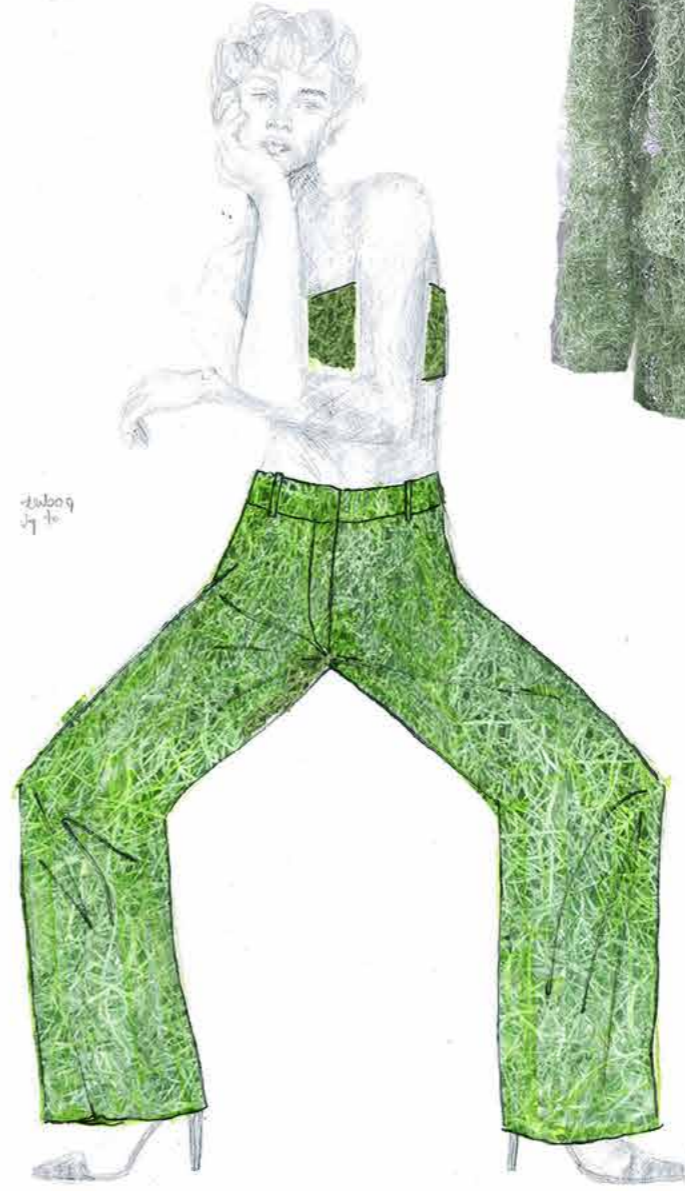
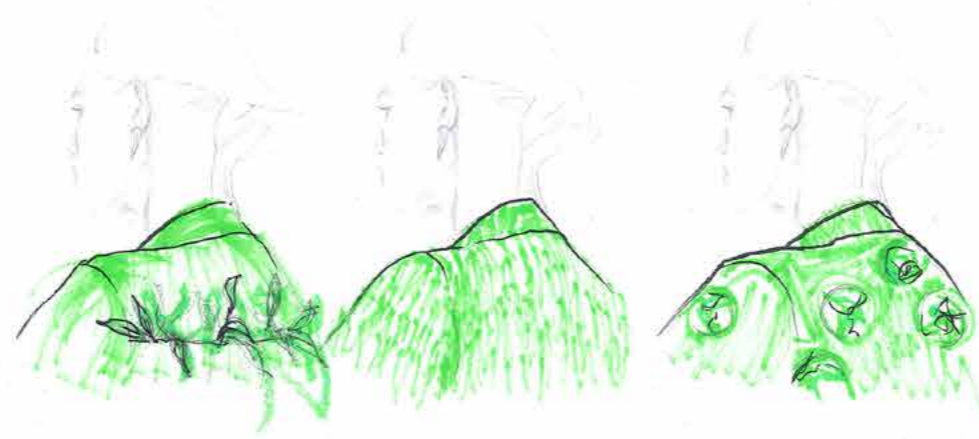




These woven sets are a representation of full forest emersion- using an abundance of forest-like textures and colours to emulate this. This includes the incorporation of live Spanish moss, which can produce a beautiful woven section- as shown in my prior research. Potentially this can result in the release of terpenes and health benefits may occur.







PHOTOSYNTHESISING SUIT



DEADSTOCK WOOL



PANTONE®

11-0601 TCX  
Bright White

RGB 244 249 255  
HEX #F4F9FF

PANTONE®

19-3864 TCX  
Mazarine Blue

RGB 39 60 118  
HEX #273C76

Painted suit covered with a carbon dioxide absorbing print "ABSORB" to demonstrate one of the secondary functions of the outfit. It is a full outfit made from deadstock wool. This encapsulates the stress pre-forest bathing using a classic business silhouette with an extended shoulder to portray the weight we all carry and the potential forest bathing has to alleviate this.

## OUTFIT 5



CARBON SEQUESTERING SUIT



Cretan Maple



Box-elder



Box-elder



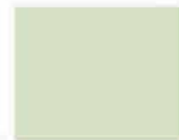
**PANTONE**  
18-5845 TCX  
Lush Meadow

RGB 0 110 82  
HEX #006E52



**PANTONE**  
11-0601 TCX  
Bright White

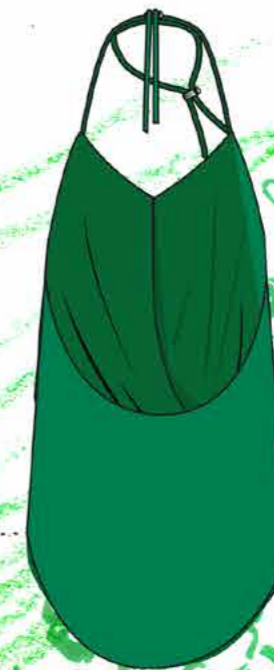
RGB 244 249 255  
HEX #F4F9FF



**PANTONE**  
12-0108 TCX  
Canary Green

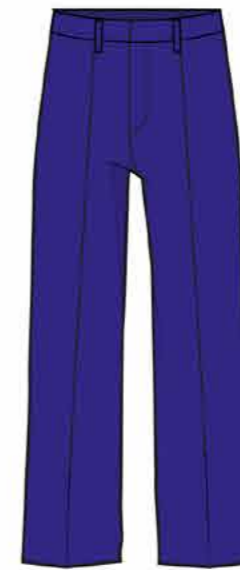
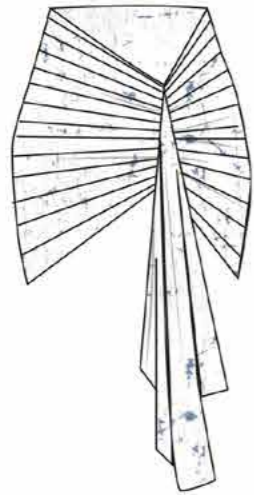
RGB 214 223 201  
HEX #D6DFC9

TM



A photosynthesising Spanish moss cropped shirt, paired with a cupro draped slip dress, painted with carbon dioxide absorbing paint on the top half. This brings together the main techniques and contrasting themes within the work.

# OUTFIT 4



# **EXCESS & REDUCTION**

EMMA MONEY

# EXCESS & REDUCTION



IN A WORLD WHERE FAST PACED CONSUMPTION IS ALL WE KNOW, I WANT TO CREATE A COLLECTION THAT HELPS US REFLECT ON THIS EXCESS, TO WHAT EXTENT IS REDUCTION NECESSARY AND WHETHER THERE IS AN ALTERNATIVE SOLUTION.

I WANT TO EXPLORE THE HOMEMADE PRODUCTION OF BIOMATERIALS AS A WAY TO REDUCE THE IMPACT OF OUR INDUSTRY. THIS OFFERS A PROGRESSION: IF OUR PRODUCTS HAVE LITTLE NEGATIVE IMPACT AND POTENTIALLY IN THE FUTURE, MORE POSITIVE IMPACTS, DOES THE EXCESS MATTER?







MY BIOMATERIAL COLOUR SAMPLES



**COLOURBOARD**

INSPIRED BY THE ABUNDANT AND ECLECTIC USE OF A COLOUR WITHIN THE WORKS ABSTRACT ARTIST STEFFI MOELLERS, I WANTED TO EMBODY AN ELEMENT OF EVERY PRIMARY COLOUR AND DEMONSTRATE THE EXCESS OF OPTIONS AVAILABLE TO THE CONSUMER.



USE BIOPLASTIC FOR THE BOTTOMHALF

USE CRINOLINE TO CREATE OVER THE HIP STRUCTURE

PLAY WITH HANGING LAYERS OF PLEATS OFF EDGE

SKIRT- PLEATED THEN ATTACH EITHER RUFFLES OR 3D NETTED SHAPES

**INITIAL COLLAGES FROM WASTE VOGUE MAGAZINES-**

LOOKING AT CONTRASTING SILHOUETTES OF MORE RESERVED SILHOUTTES AND LARGER VOLUMES TO REPRESENT THE EXCESS

**NMORE CONTRAST NEEDED BETWEEN MINIMAL AND MAXIMAL**



NILS UDO  
 RESEMBLANCE OF DRAGON'S BLOOD- RESTORATIVE TREE SAP GROWS OUTWARDS ON TREES. PHYSICAL SHAPES PROVIDE VISUAL INSPIRATION FOR COLOUR AND SILHOUETTE OR DETAILS THE USE IS A REMINDER OF NATURE'S EXCESS THAT SEEPS THROUGH CRACKS

DRAPERIES MADE WITH FABRIC COOKED AT HOME- REDUCING TRANSPORTATION

USE LINES TO CUT THROUGH THE GARMENT AND RESEMBLE THE CHANGE BETWEEN EXCESS AND REDUCTION

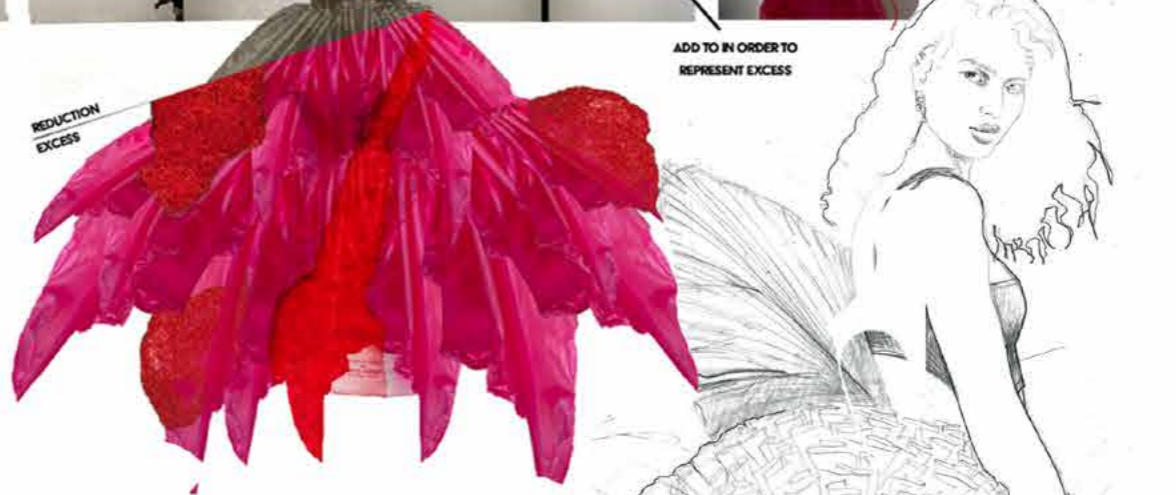


ADD TO IN ORDER TO REPRESENT EXCESS



POMPOM-LIKE STRUCTURES WITH SEGMENTS CUT AFTER STITCHING TO ALLOW ROOM FOR ARMHOLES

LAYERS OF RECYCLED TULLE



REDUCTION EXCESS





# **FLUIDITY**

EMMA MONEY

Whilst advocating gender fluidity, I aim to explore the relationship between tangible forms of fluidity, with reference to the sculpture *Secreto Amor* and the process of breaking down social binaries.

CONCEPT





**DRAPERY INSPIRED BY A VEILED CUPID, WHICH BEARS THE RESEMBLANCE OF LUST. THE CUPID ILLUSTRATES THE ROMANTISISM AND LOVE, HIDDEN BEHIND THE FABRIC, CONCEALED AND HYPSTIFIED. THE LOVE IS RESTRAINED, AND THE BODY IS CLUNG TO.**



**FLUIDITY**  
EMMA MONEY



folded  
over,  
held by  
Magnets



drawstring  
ruffles

### CONVERTIBLE T-SHIRTS



little  
drawstrings



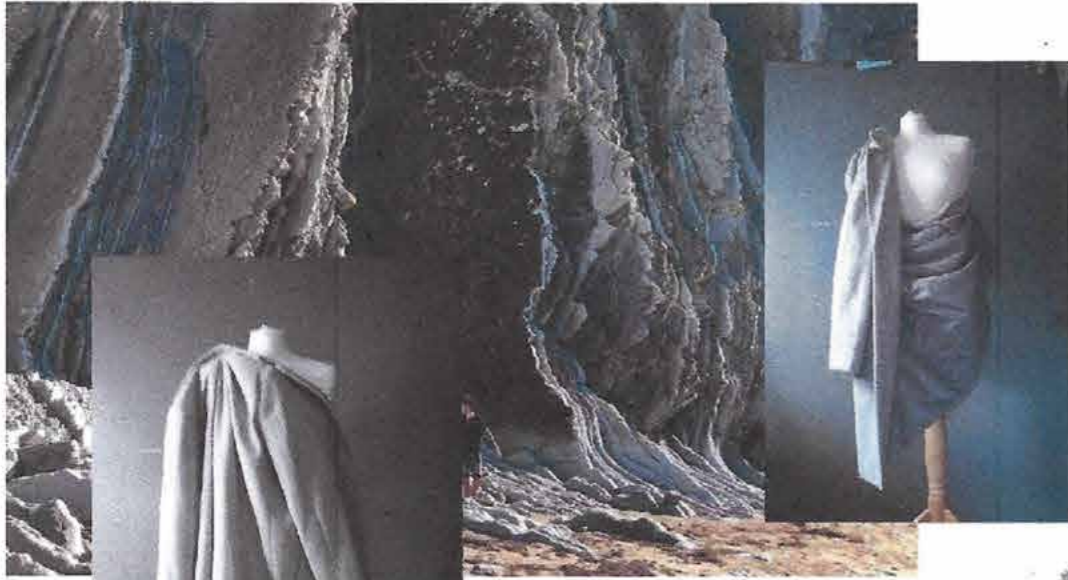
magnets  
fold  
& crop

convertible t-shirts with  
no removable items allows  
you to change your labels  
of masculine & female features  
on your clothes depending on  
how you're feeling throughout  
the day or where you are.

ruffles  
inspired  
by  
Mareo  
Rodriguez  
artwork  
↳



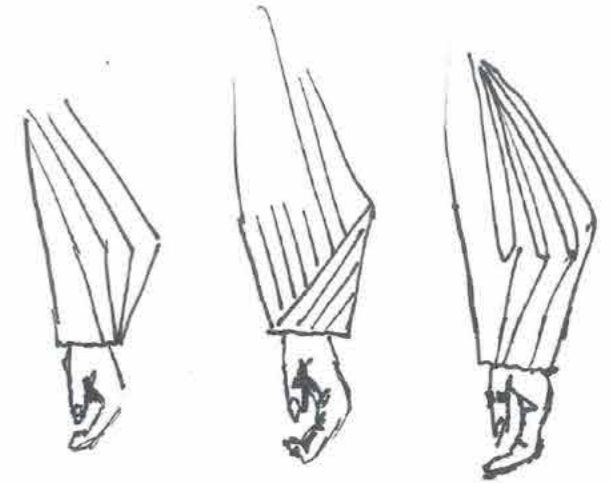
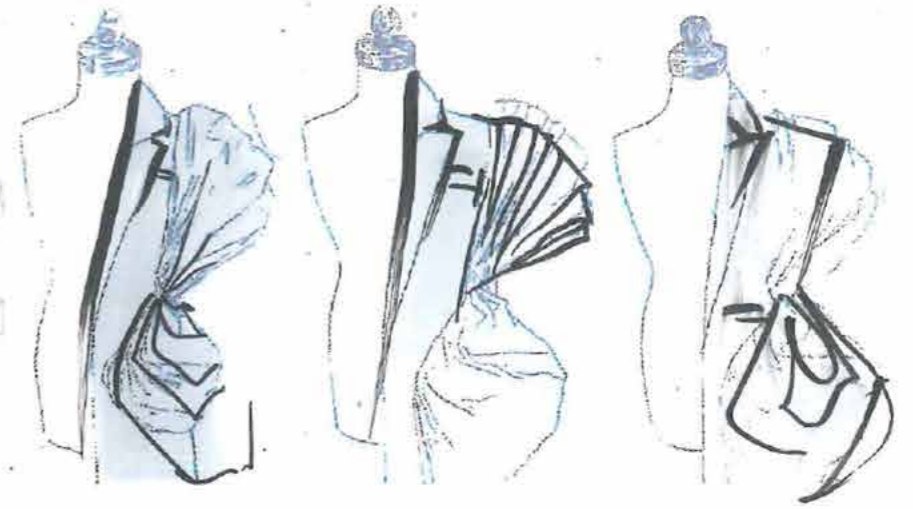




With this design I began looking into the idea of removable elements. This means that your outfit is adjustable with your daily feelings.



pleats on shoulder / on wrist



**FLUIDITY**  
EMMA MONEY

