



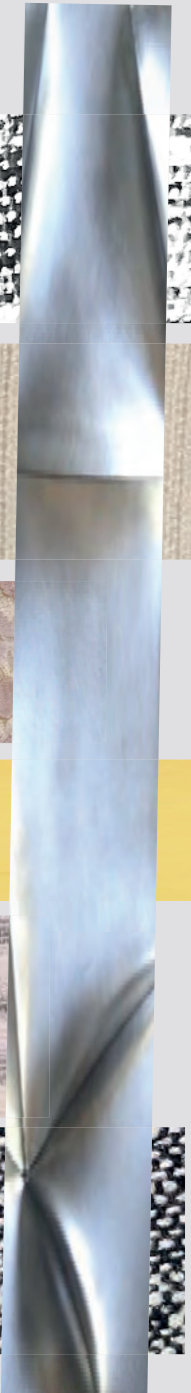
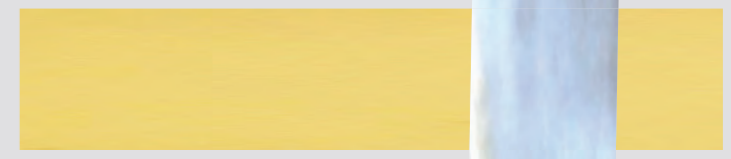
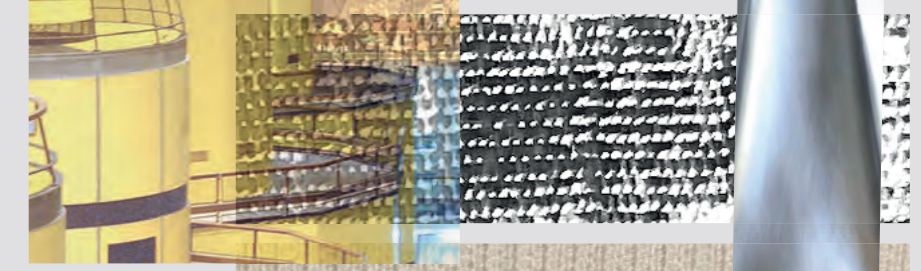
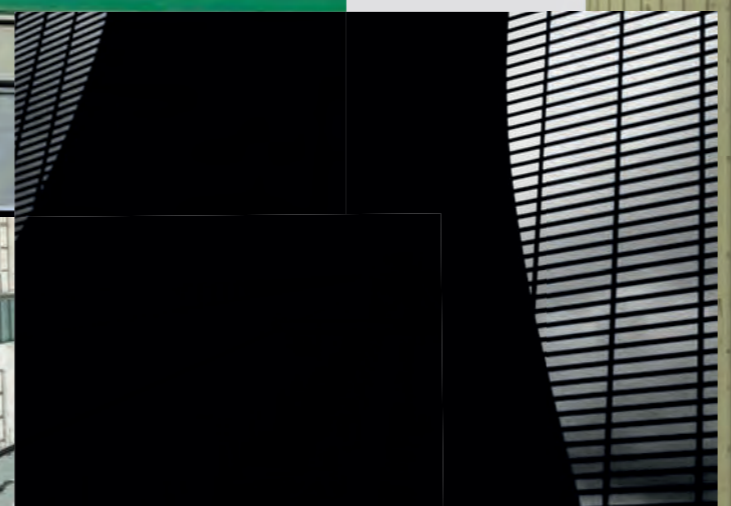
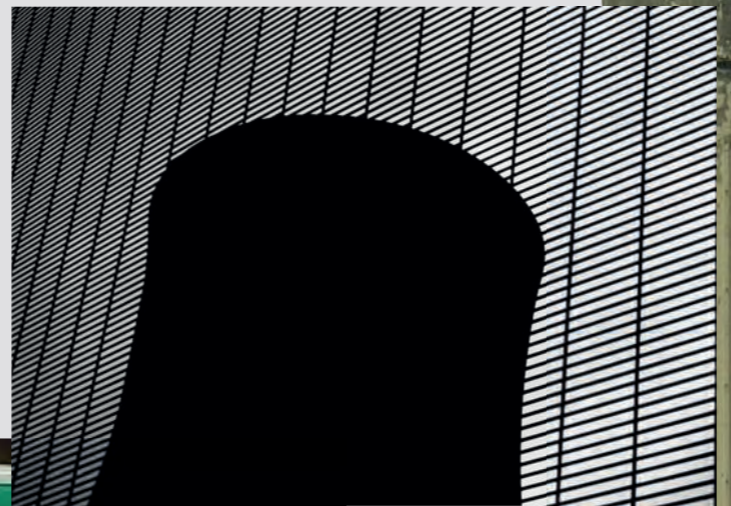
LORNA GIBSON

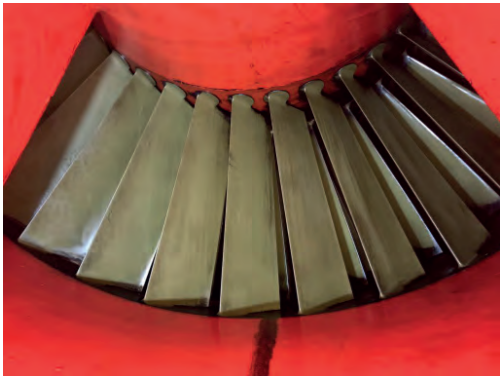
EMAIL ADDRESS: LCG1357@LIVE.CO.UK
PHONE NUMBER: 07884 589525

POWERHOUSE

POWERHOUSE

MOTIVATED TO ADDRESS FACTORS THAT RESULT IN FEWER WOMEN WORKING IN 'TRADITIONAL MALE ROLES. EXPLORING DESIGN FEATURES OF POWER STATIONS, INVESTIGATING BOTH THE BUILDINGS THEMSELVES, AND THE TECHNOLOGY WITHIN THEM. DEMONSTRATE THAT ANY INDUSTRY IS ABLE TO BE INCLUSIVE REGARDLESS OF THE PERCEIVED GENDER BIAS.

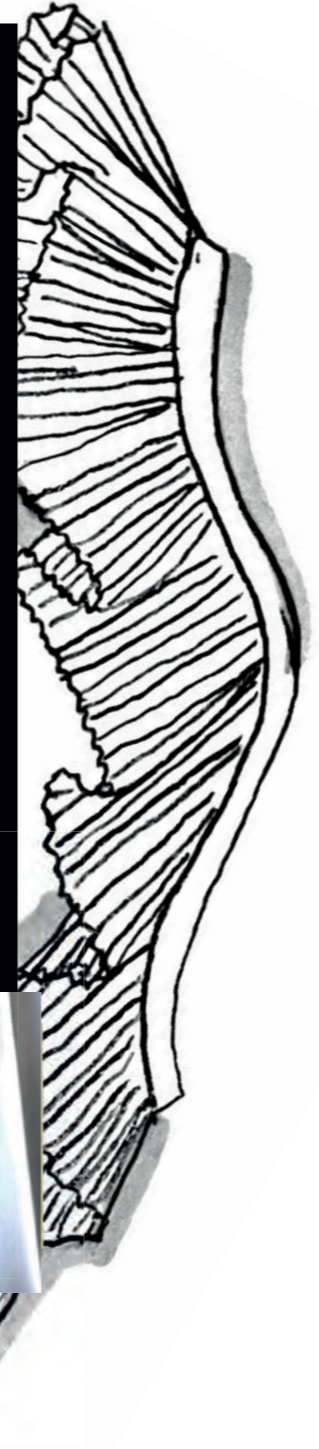
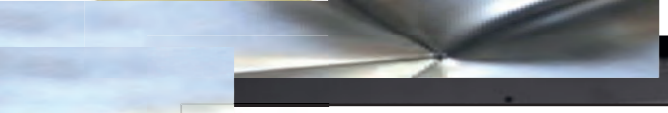




COLLAGING TURBINES TOGETHER WITH WORKWEAR TO EXPLORE SHILLOUETTES



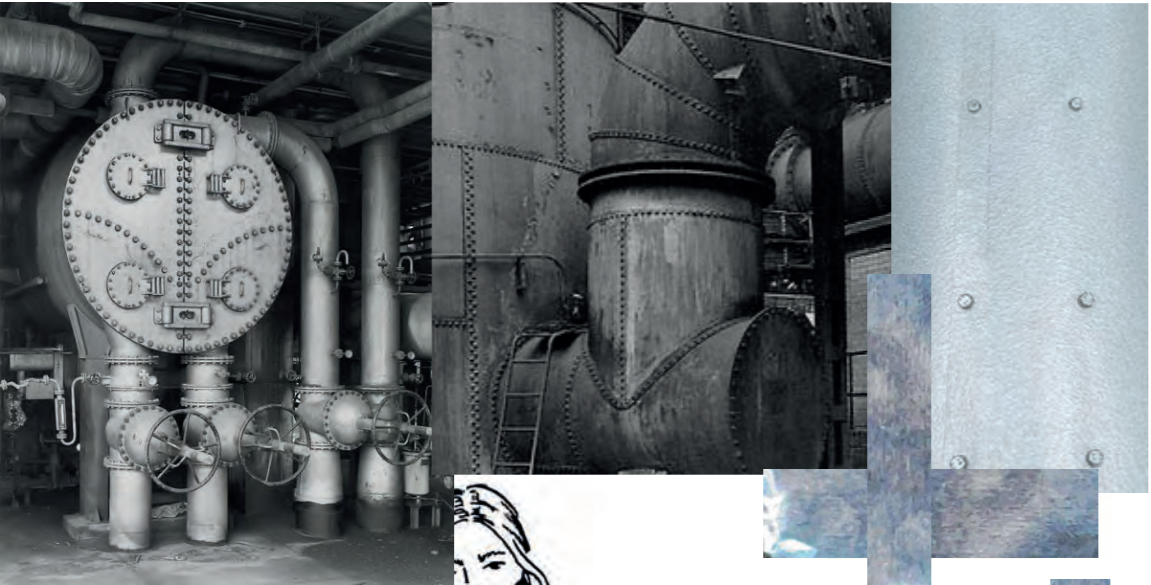
COMBINATION OF SUNRAY PLEATS, BOX PLEATS AND KNIFE PLEATS WITH DIFFERENT HEM LENGTHS



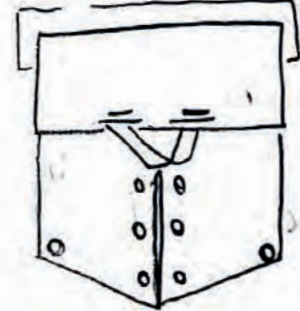
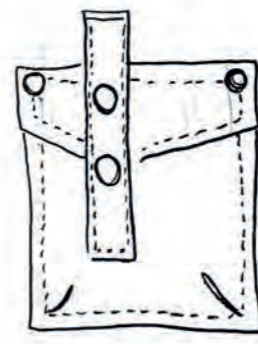
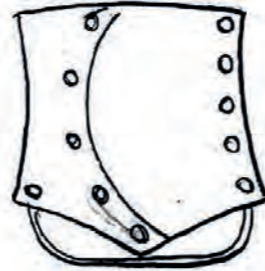
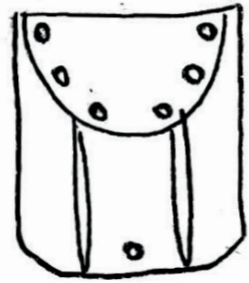
ASYMETRIC SHAPES



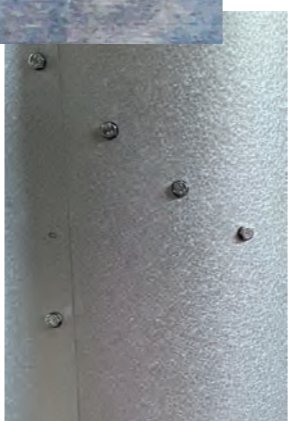
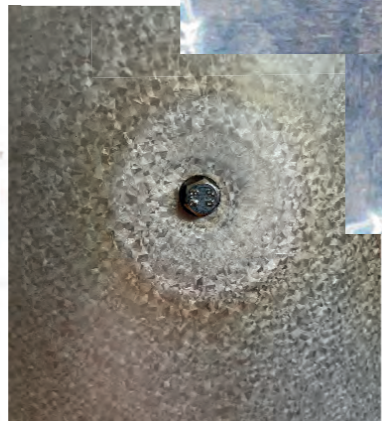
OPEN ENDED METAL ZIP DOWN CENTER FRONT



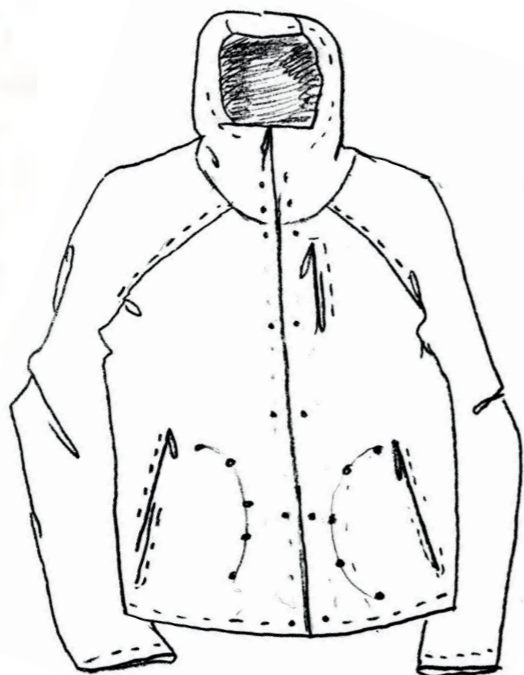
USING RIVETS AND BOLTS TO REINFORCE POCKETS AND BECOME A DECORATIVE FEATURE.



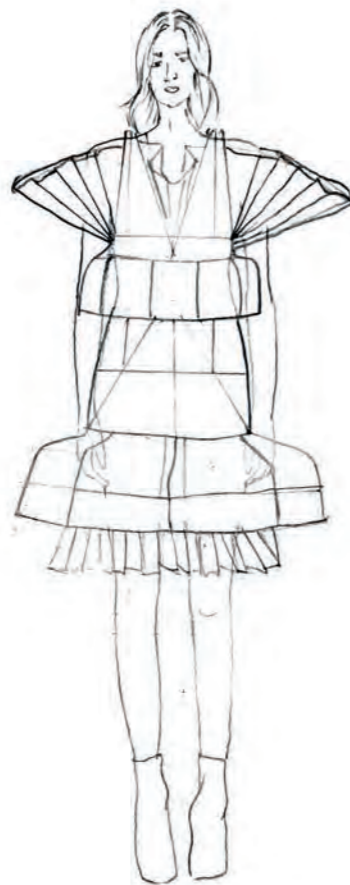
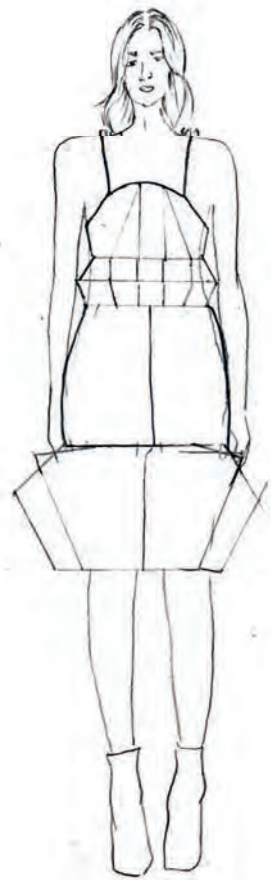
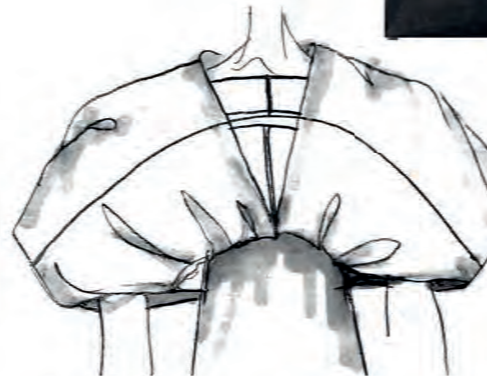
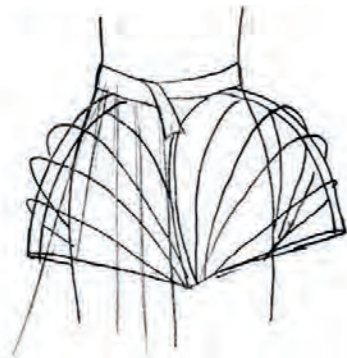
LOOKING INTO THE POSSIBILITY OF USING METAL AS A MATERIAL IN MY FINAL COLLECTION.



RECTREATING PATTERNS AND TEXTURES BY HEATING METALS

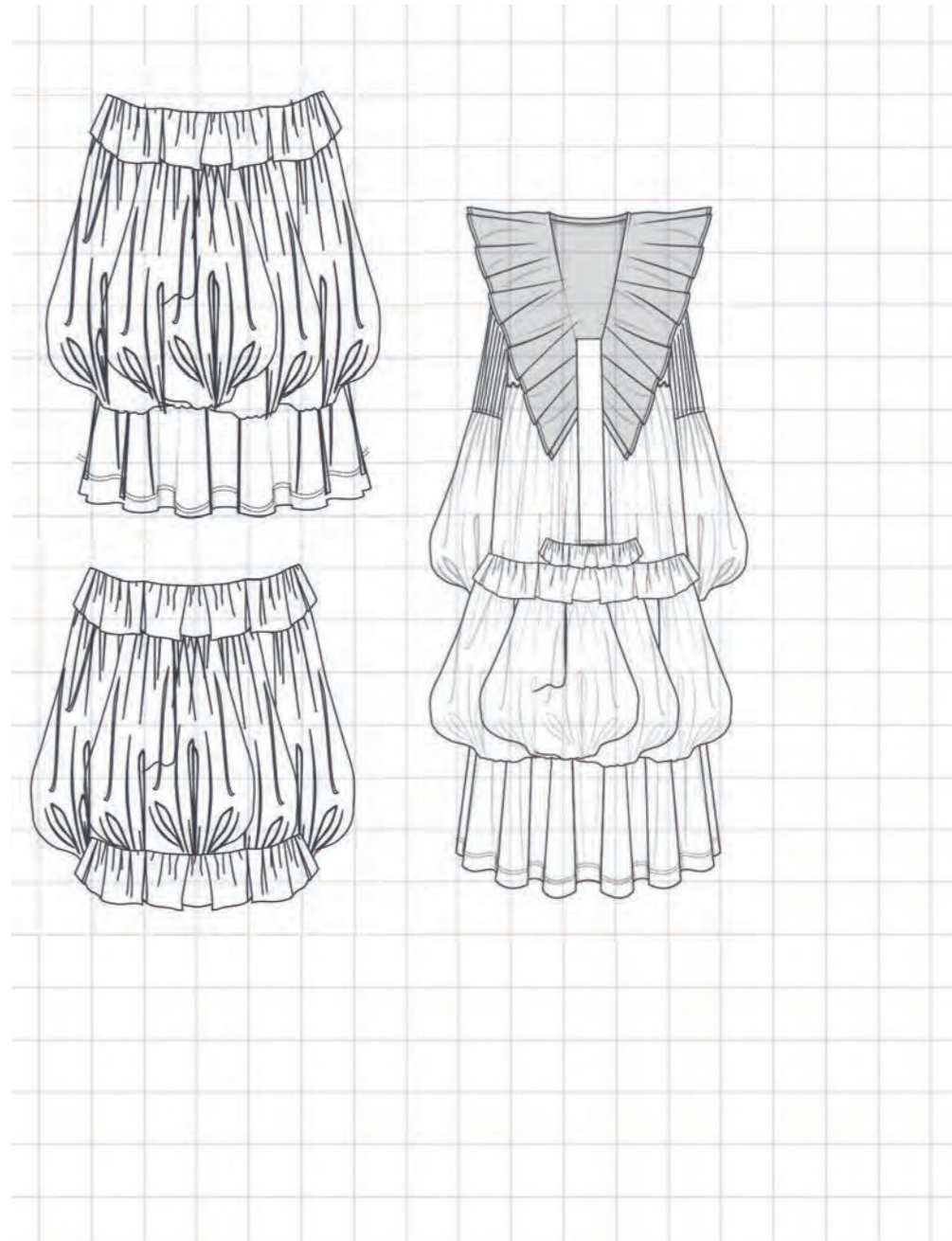


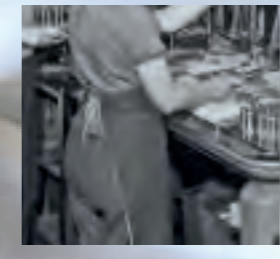
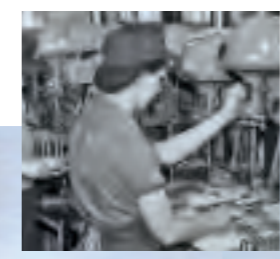
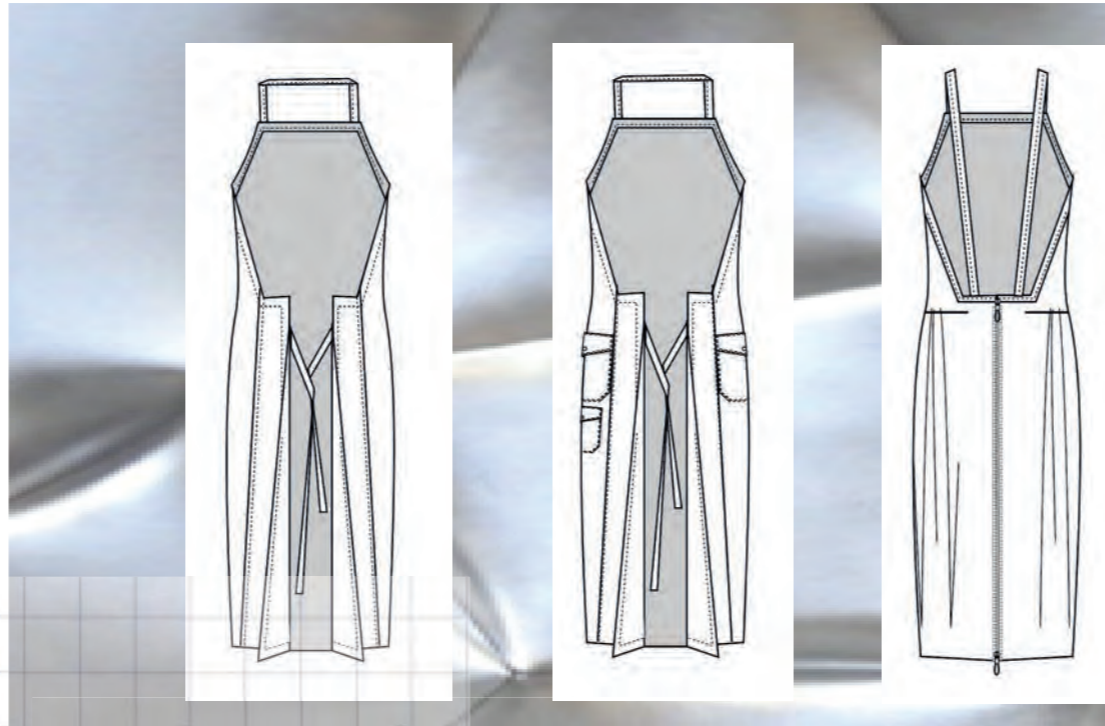
METAL WIRE AND DARTS, IN A SLEEVE HEAD SHAPPED PATTERN, TO INVESTIGATE THE RECREATION AND EXPLORATION OF A CIRCULAR HOOP SHAPE IN A GARNMENT.





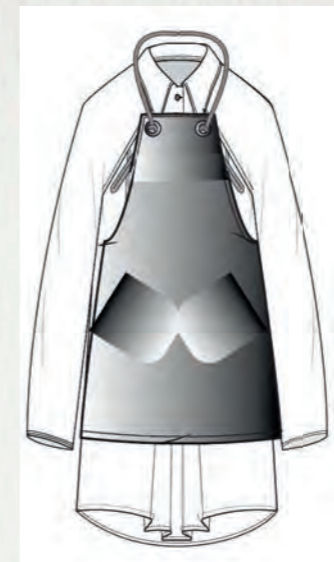
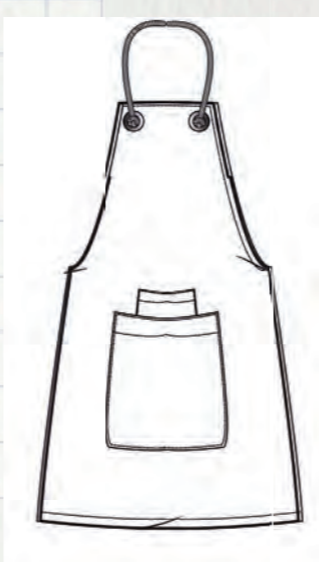
TAKING THE IMAGERY OF SMOKE AND STEAM AND EXPLORING THIS WITH FABRIC. RECREATING THE LIGHT WEIGHT APPEARANCE THROUGH GATHERS AND DARTS.

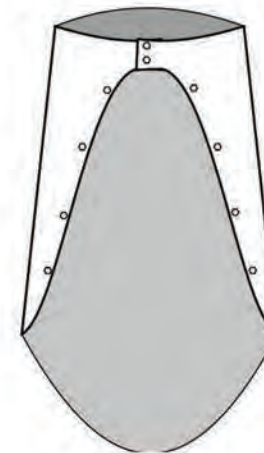
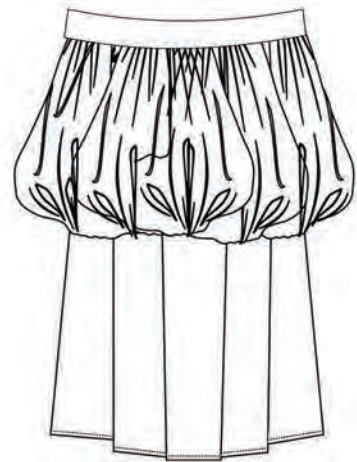
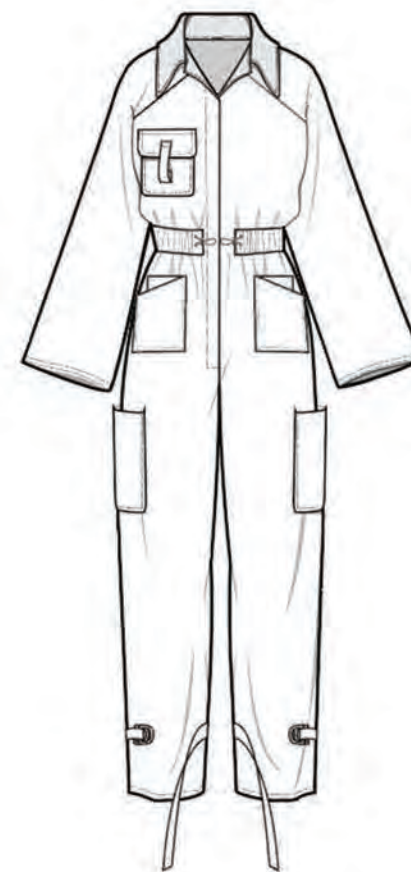
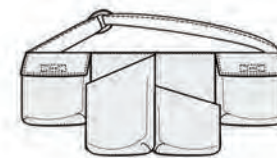
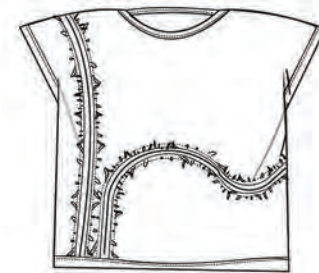
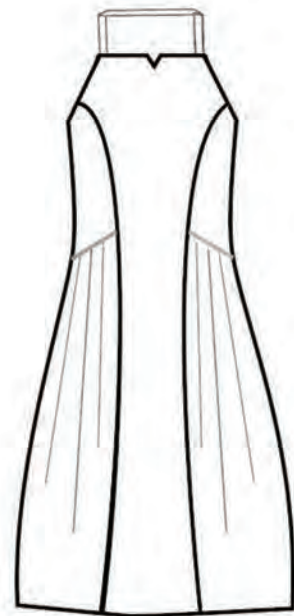
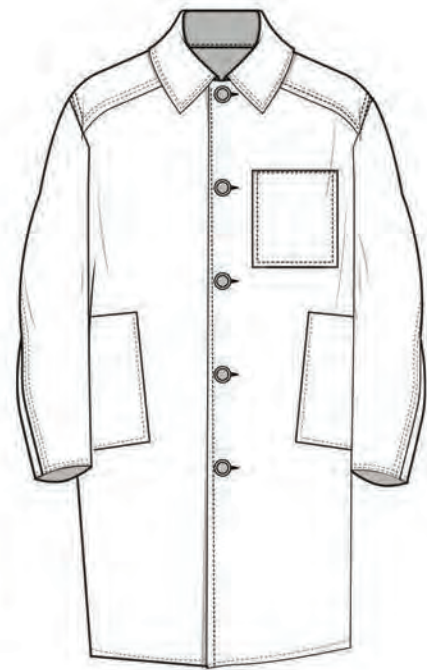
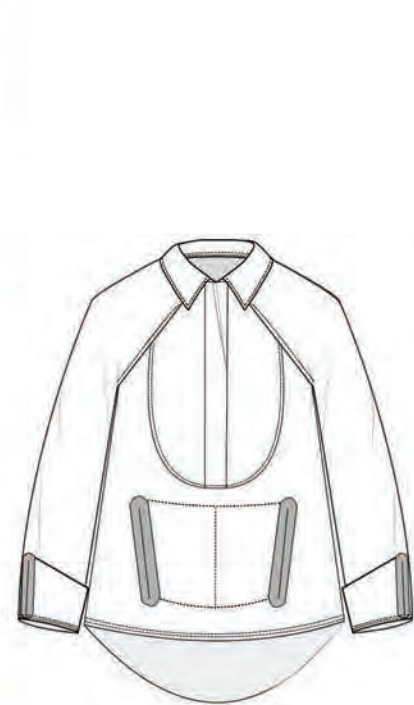




APRON - A PRACTICAL GARNMENT OFTEN WITH LITTLE STRUCTURE.

ADDING DARTS AND SHAPPED SEAMS ALONG WITH PLEATS TO CREATE A MORE FLATTERING SHILLOUETTE





Ag 47

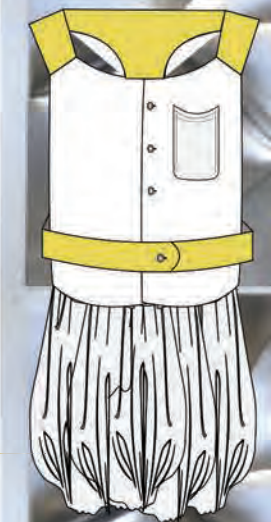
MERCURY

660.3

Fe 26

PLUTONIUM 94

CARBON 6





REVISION 1.04.12

CHASING CLOUDS



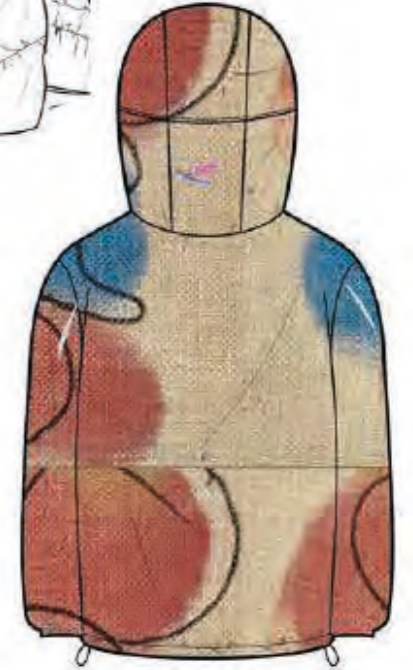
CLOUD CHASING



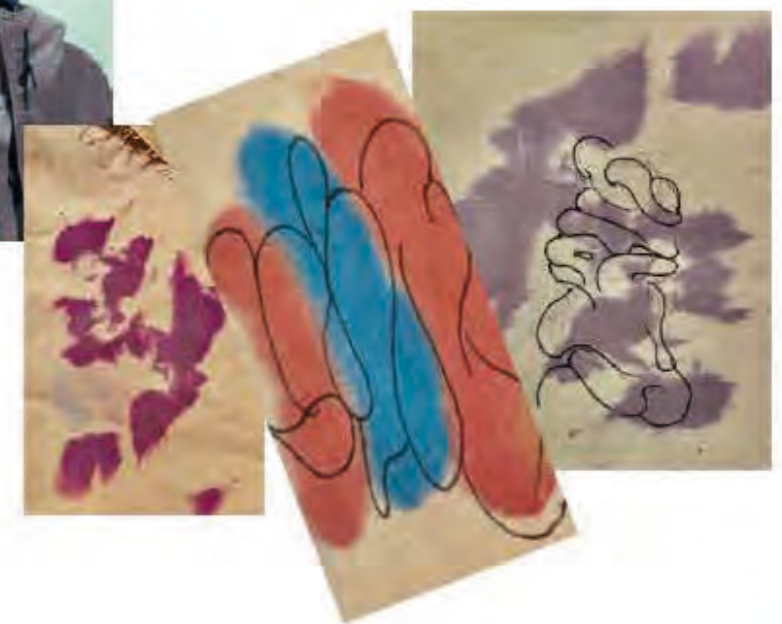
smoking cigars
Vaping culture
streets of Cuba



Lorna Gibson



Developing print inspired by the clouds of smoke and marks on the photograph of Churchill



Quilted top layer, separate to the bottom top, allowing the target audience to be able to layer their clothes.



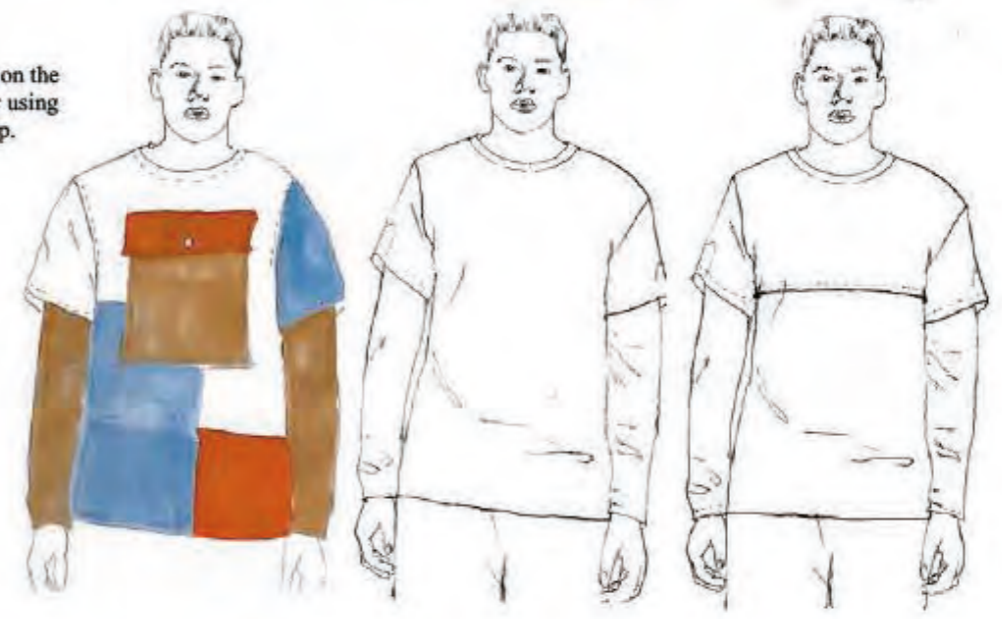
Pockets placed within the colour blocking.



Block colours influenced by Cuba and the buildings.



Asymmetric hem on the jacket fastened by using a metal chunky zip.



Colour blocking in different areas of the coat.



Metal zip fastening down center front



Patch pockets stitched onto the coat

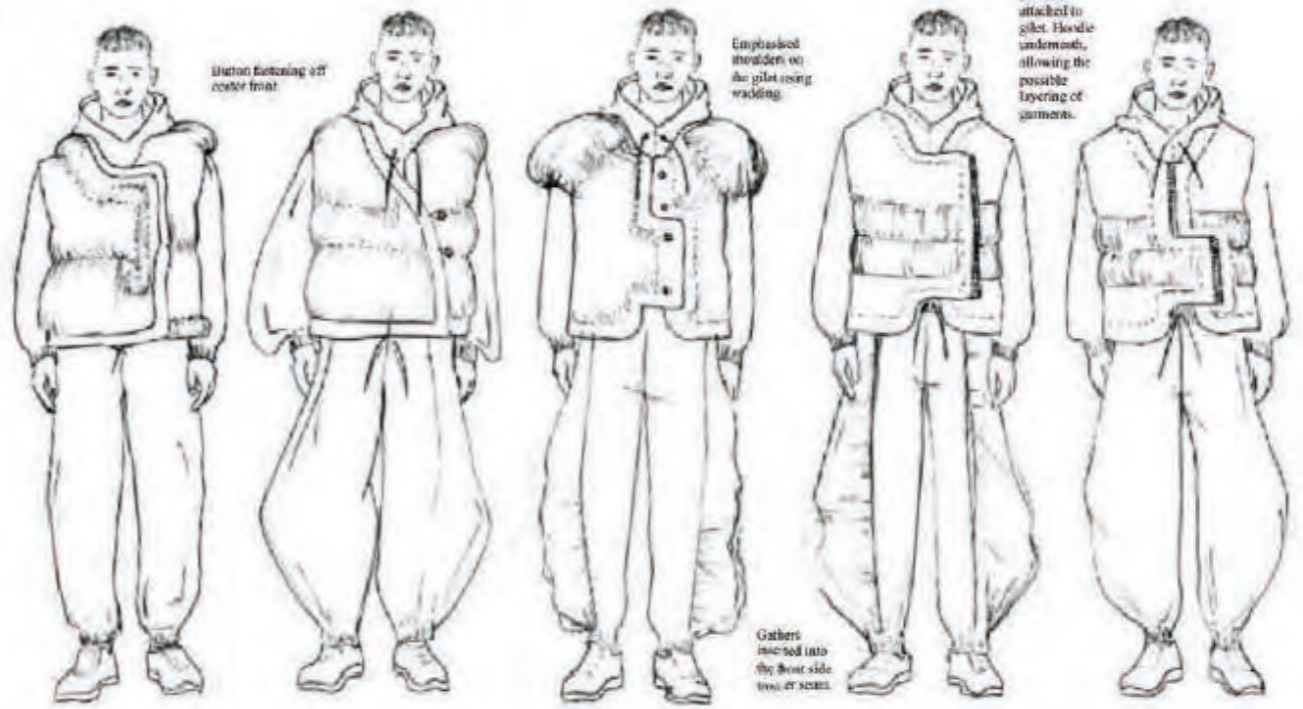




Taking the print of smoke and collaging it on the stand to create a silhouette



Stitch lines on top of the wadding



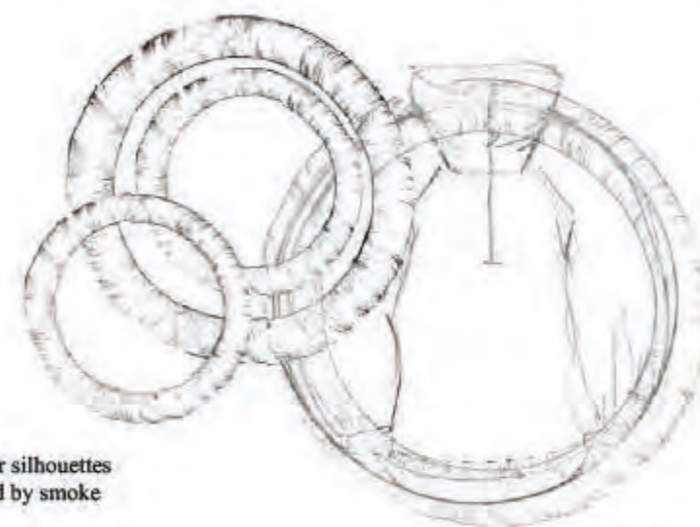
Wider fastening off center front

Emphasised shoulder on the quilt using wadding

No hood attached to quilt. Hoodie underneath, allowing the possible layering of garments.

Gathers inserted into the front side seam at waist.

Elaborated cuffs to control shape and length of trousers.



Circular silhouettes inspired by smoke rings.

Uneven sized wadding channels stacked on top of each other creating a ringed affect.



3D tubed bag strap, exploring these straps as decorative features on tops.



Wadded placket covering the fastening.







Fabrics:
Light weight
cotton polyester
flour weight
polyester



Open ended metal zip
fastening



Shorew collar and lapel

Small patch pocket

Dropped shoulder seams
for an oversized and
casual feel



Cloudy wind
zip opening
on pocket

Fly zip with buckle for
strong fastening

Coin Pockets
and/or trouser
pockets, given for
strength and
decorative with
double top
stitching

Roll up hem on the
trouser



Apply patch on the
lower and
around the top
of the trouser
pockets

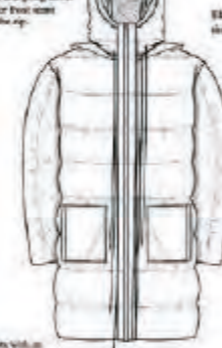
Hem loops on waist and
around trouser
waistband



Fabrics:
Water resistant
polyester
Stretch resistant
cotton



Fabric wrap across the
backline and going down
the center front seam
around the zip



Elasticated edge around
the hem

Quilted fabric for
warmth and decorative

Facing attached to a
long leather-like texture

Pouch pockets with an
open side seam



Stand up with top
applied for a clean
look

Adjustable waistband
and hem for comfort



Fabrics:
Brushed rammerkin
fabric - Polyester
and cotton
Brushed cotton



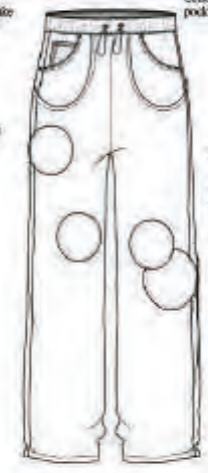
Dressing hood



Decorative top
stitching along
seams

Toggle to make
the waistband
adjustable

Apply patch on the
waistband
fabric



Center front kangaroo
pockets

Double pockets with
decorative top stitching

Coin pocket left for
double pocket



Fabric trapped within the
seam going across the
body

Elasticated cuffs creating
a false sleeve



Elasticated drawstring
waistband



Fabrics:
Polyester Jersey
Stretch Polyester
Stretch knit



Top layer of
fabric trapped
into the neckline
and side seam

Ribbed neckline

Double stitching
back on sleeve

Decorative fly
stitching



Double stitching
around hem



Elasticated
drawstring
waistband on
shorts



Decorative
elastic and toggle



Fabrics:
Water resistant
polyester
Jersey
Brushed rammerkin
fabric



Two metal chunky open-
ended zip



Lateral darts

Top layer quilted

Diagonal asymmetric
seam on the quilted layer

Stretch around edge
plot

Waist or waistband

Fly fastening with zip

Top stitching
on pockets

Contrasting
binding along
pocket edges
for a clean
decorative
look

Hem loops around
waistband



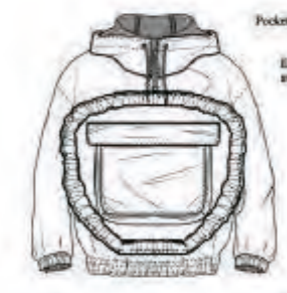
Two layered trousers,
top layer sewn into side
seam

Coin Pockets under
trouser pockets, given for
strength and decorative

Fabric trapped into the
center front seam of
trousers



Fabrics:
Brush of overshot knit
fabric - Polyester
and cotton
Water resistant
polyester



Pocket Centre front

Elasticated top panel cut
away in a circle

Eyeslets for
drawstring



Nylon Zip with a
tape finishing
around side
pocket fastening

Decorative zip
with rope rigging



Dressing hood

Top stitching along
shoulder seams

Elasticated cuffs and
waistbands or cuffs



Diagonal
seams at the
knee

Fabric gathered into hem
for volume

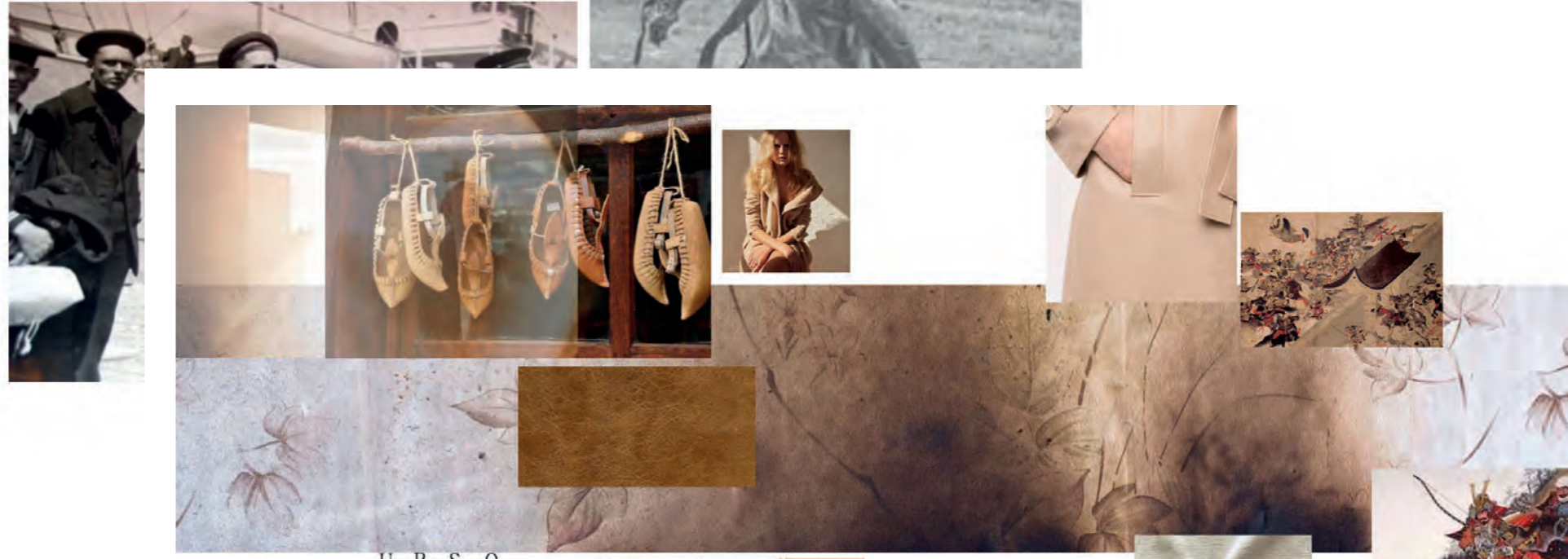
The permanent connection formed to others with a common interest, tradition or value.



Inspiration sources and exploration of connections.



Community
Chains
Traditions
Links
Honour
Status



U
N
B
L
E
A
C
H
E
D

P
E
C
K
A
N

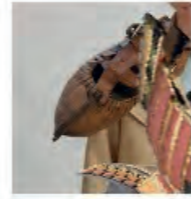
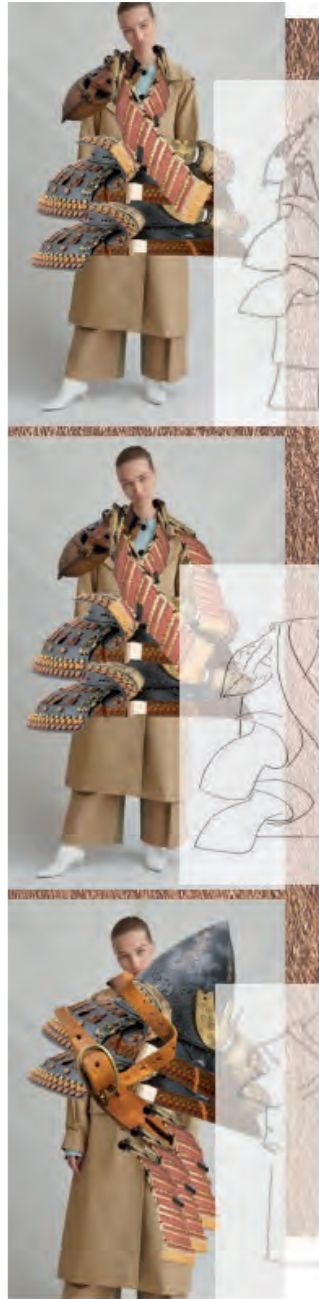
S
I
L
V
E
R

O
P
T
I
C

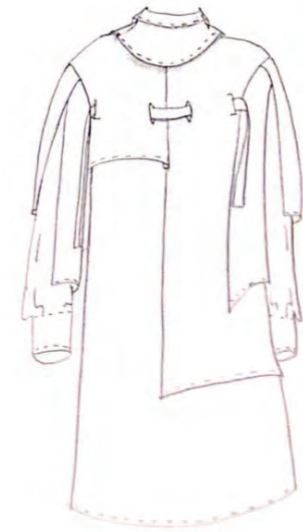
W
H
I
T
E

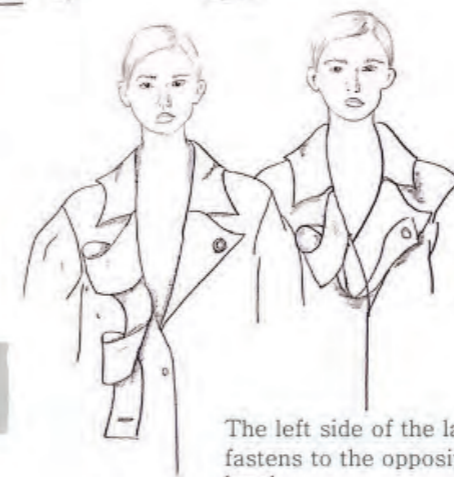
G
R
E
Y



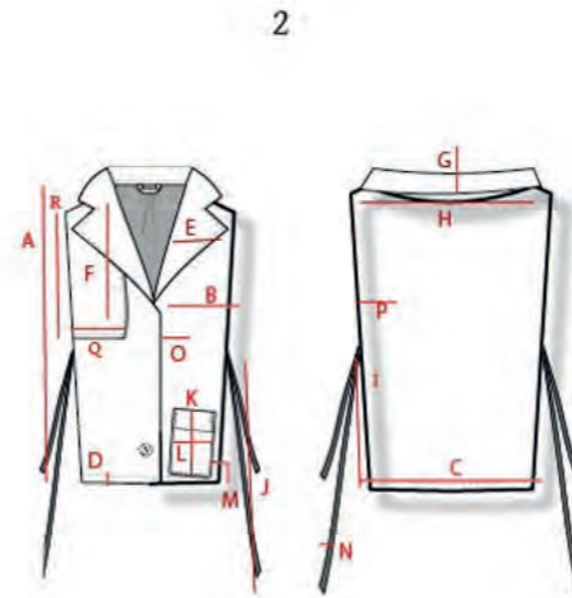
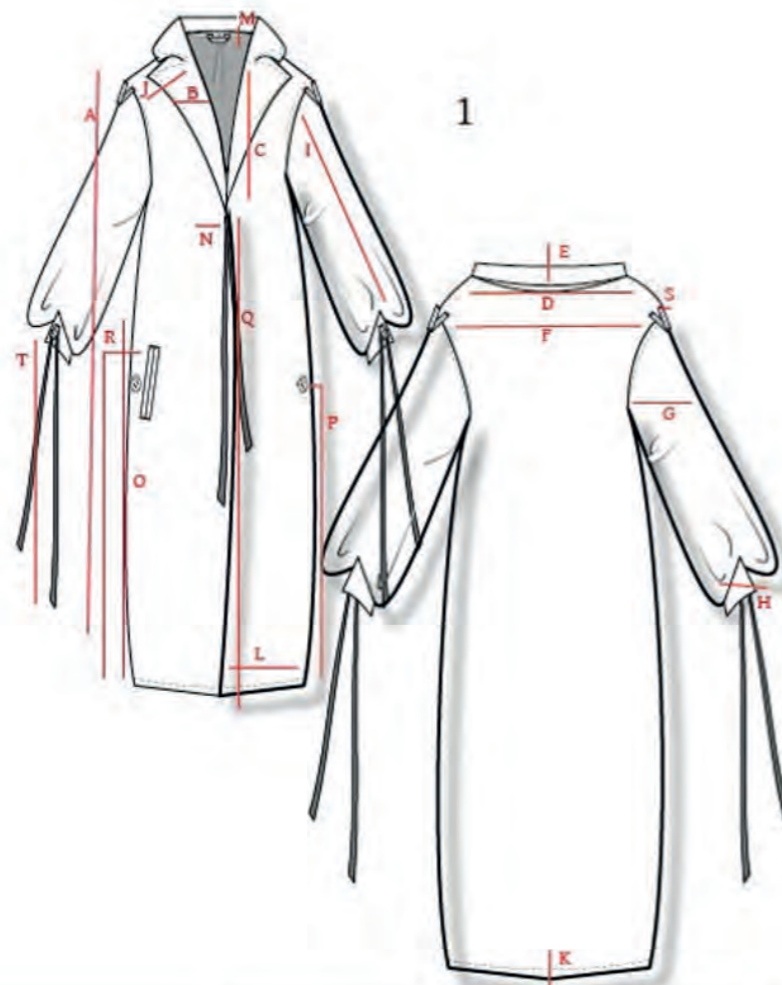


Pocket on the arm is inspired by the Bulgarian national shoe, on the collage.





The left side of the lapel fastens to the opposite lapel.



Measurement Point - 1		Measurement Point - 2	
A- Center front - 42 inches	K- Width of Hem - 2 inches	A- Center front - 17 inches	K- Pocket depth - 6 inches
B- Width of lapel - 4 inches	L- Length of Hem 1/4 - 13 inches	B- Bust Width 1/2 - 10 inches	L- Pocket width - 5 inches
C- Length of lapel - 10 inches	M - Width of collar stand - 1.5 inches	C- Length of hem 1/2 - 12 inches	M- Pocket placement - 1 inch up 4 inches across
D- Width of neck - 14 inches	N- Front Facing width - 3 inches	D- Width of hem - 0.5 inches	N- Width of fastening - 0.7 inches
E- Height of collar - 3 inches	O- Button hole (up) - 28 inches	E- Width of Lapel - 4 inches	O- Front facing - 5 inches
F- Width of shoulder - 37 inches	P- Button placement- up 20 inches across 2.5 inches	F- Length of Lapel - 14 inches	P- Back facing - 2.5 inches
G- Width of sleeve 1/2 - 10 inches	Q- Fastening (up) - 30 inches	G- Width of collar - 4 inches	Q- Width of panel - 5 inches
H- Width of Cuff 1/2 - 5 inches	R- Pocket - in 4 inches up 20 inches	H- Length of neck back - 13 inches	R- Length of panel - 7 inches
I- Sleeve length - 14.5 inches	S- Belt loop width - 0.5 inches	I- Fastening (up) - 4 inches	
J- Drop shoulder length - 9 inches	T- Length of tie - 64 inches	J - Fastening length - 64 inches	

