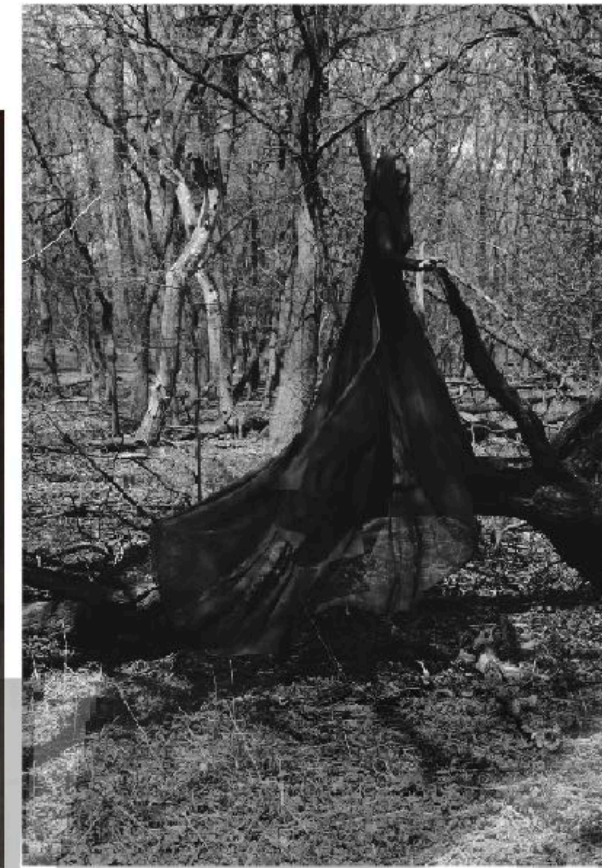

LIGHTS OUT

A/W 2022

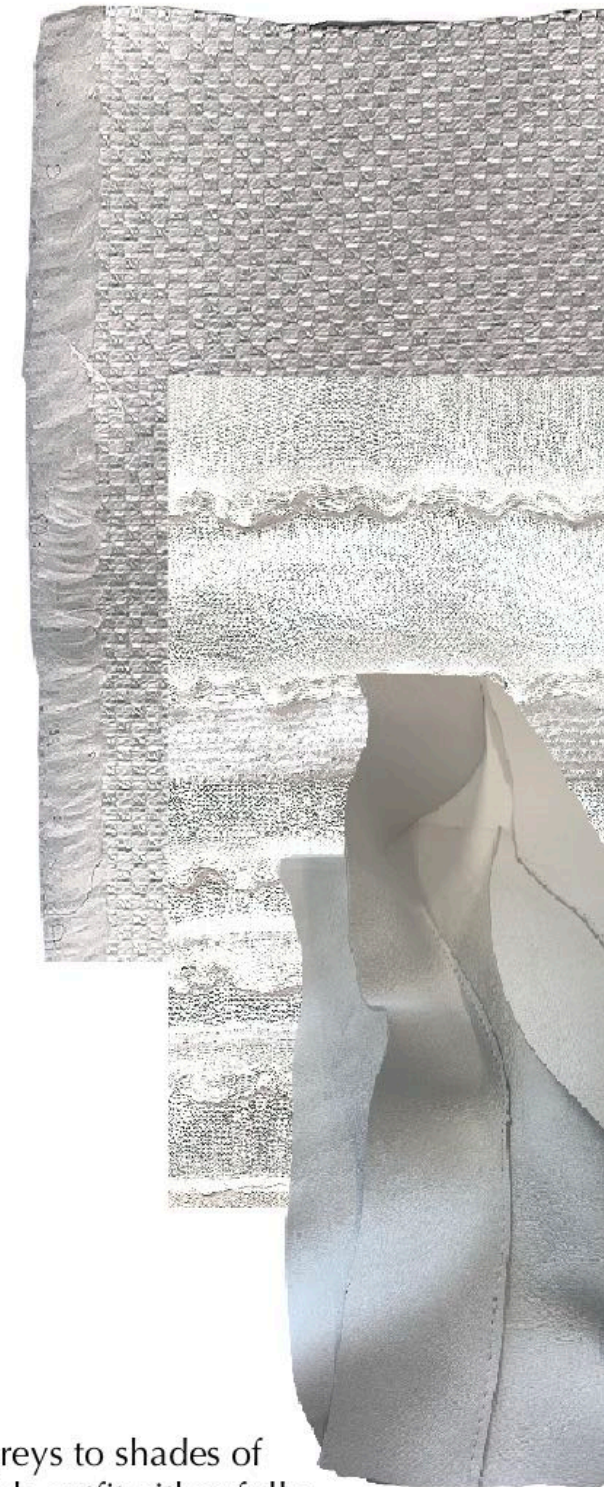


As the sun sets and the darkness consumes the once bright, safe sky, another night greets me with a tainted grip. It is not a welcome. It is kidnap, stealing from me any feelings of peace and safety. I fight to stay awake, to reject the black abyss that is waiting to engulf me. My fight angers them. And all too soon, I retreat to my unconscious and let them in.

I am awake. I am aware. But cannot move. I am paralyzed. There is a presence in my bedroom. Dark, sinewy limbs creep closer, mocking me with its freedom. My heart is racing as hollow white eyes stare at me, holding my gaze in a chilling game of who blinks first. Nobody will win tonight.

NATALIA HIGHAM

LIGHTS OUT
A/W 2022



	PANTONE 19-4301 TSX Blackout
	PANTONE 19-3911 TCX Black Beauty
	PANTONE 19-0303 TCX Jet Black
	PANTONE 11-0700 TPG Lucent White
	PANTONE 11-0601 TPG Bright White



Initially, I wanted this collection to be a range of tones of black, through greys to shades of white in each outfit but after looking at fabrics, I realized that I wanted each outfit either fully black or white. I decided to still use slightly different shades of black and white however each outfit will either be in black or white in similar tones. The simple colour scheme has given me chance to have fun with the texture and textile of the garment rather than the main focus being colour.

LIGHTS OUT

A/W 2022



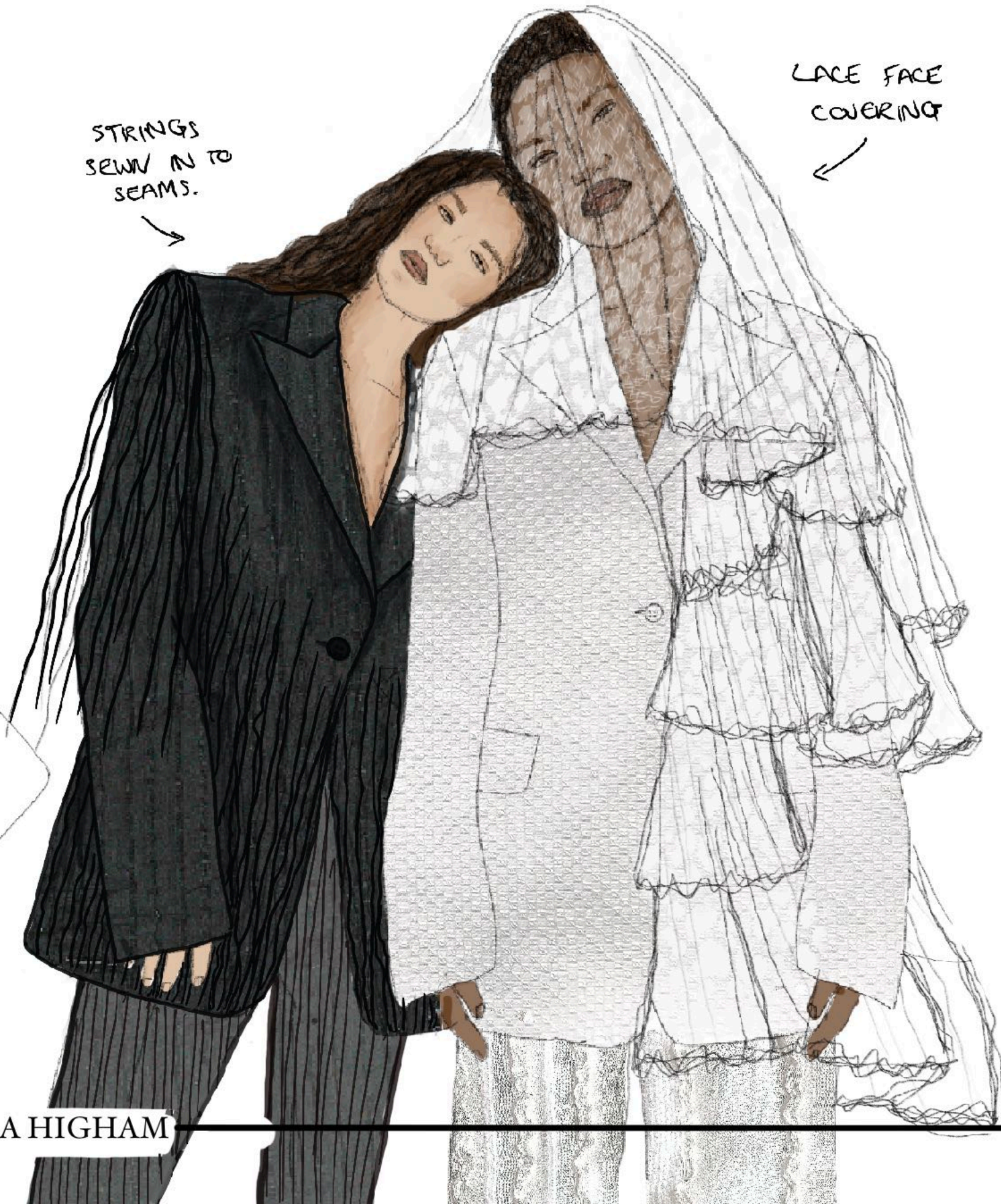
STRINGS
SEW IN TO
SEAMS.

LACE FACE
COVERING



SIMPLE DESIGNS
WITH MACRAME
OVER THE TOP

TAILORING
+
TEXTILES.



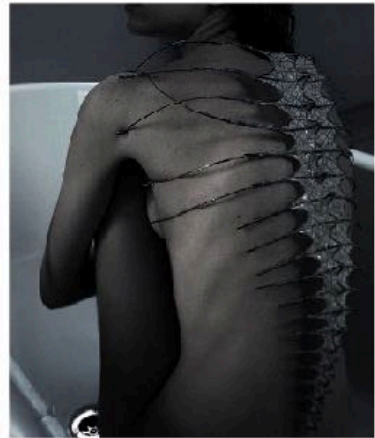
NATALIA HIGHAM

LIGHTS OUT

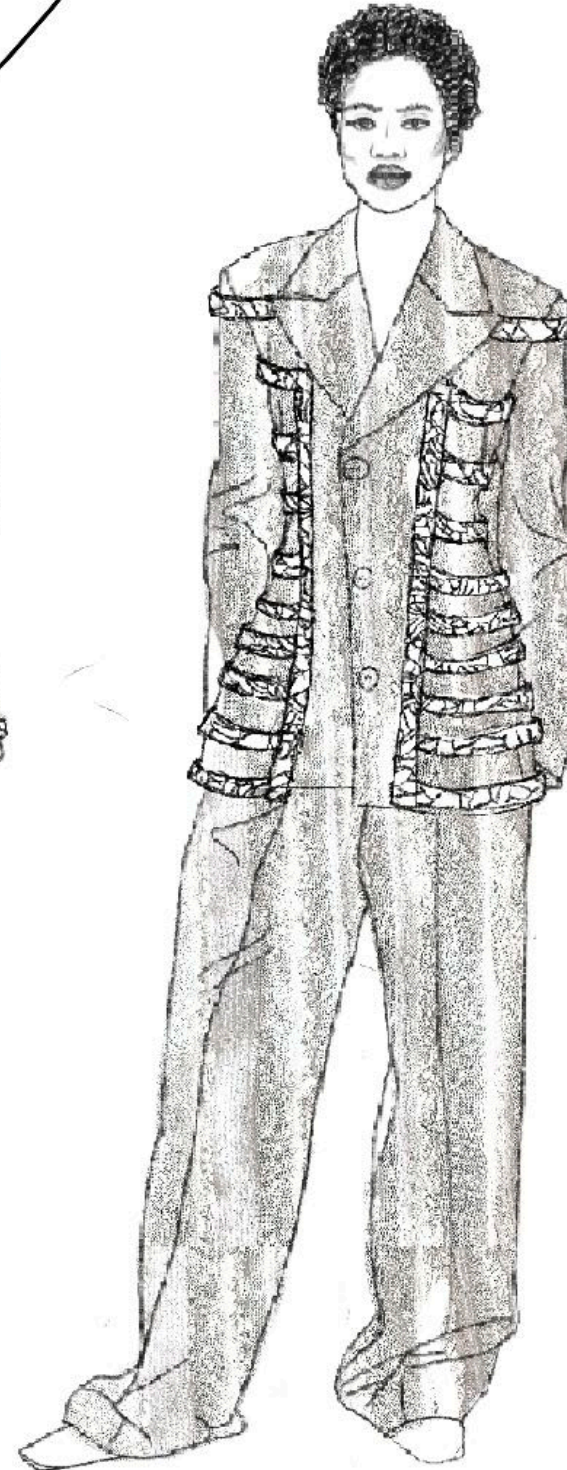
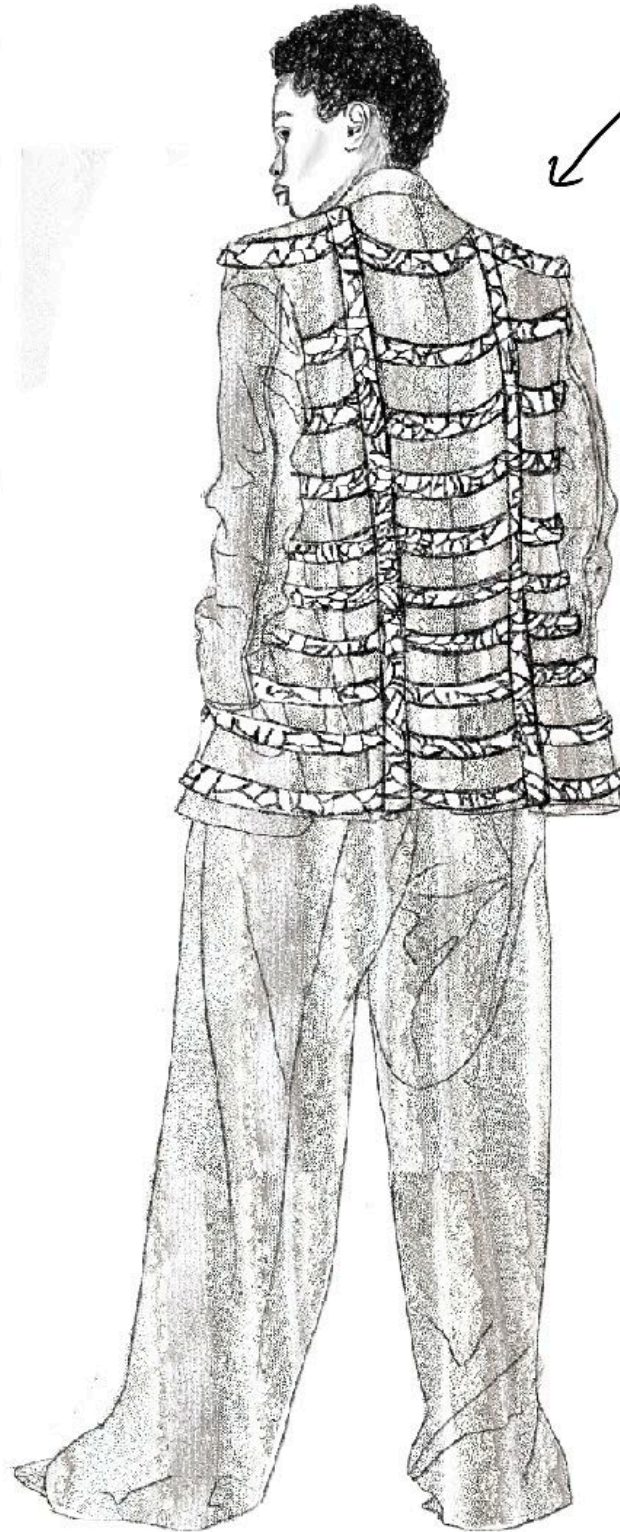
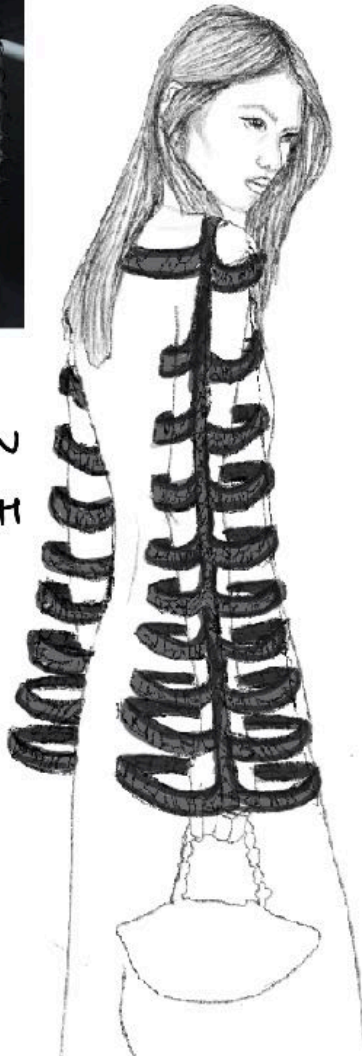
A/W 2022

HOLES IN MACRAME
MAKE THE PIECES MORE
VALUABLE

STRIPS OF MACRAME
↳ GAGED EFFECT



SHADE TAKEN
FROM RESEARCH
OF BEING
GRABBED +
TAKEN IN
DREAMS



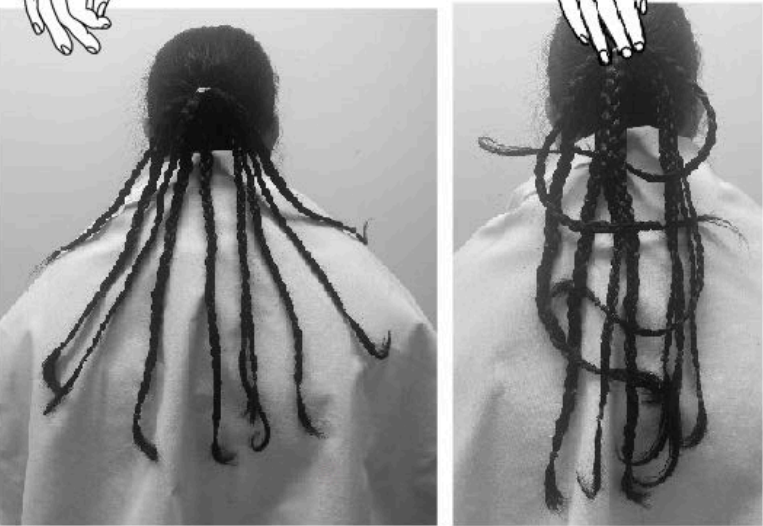
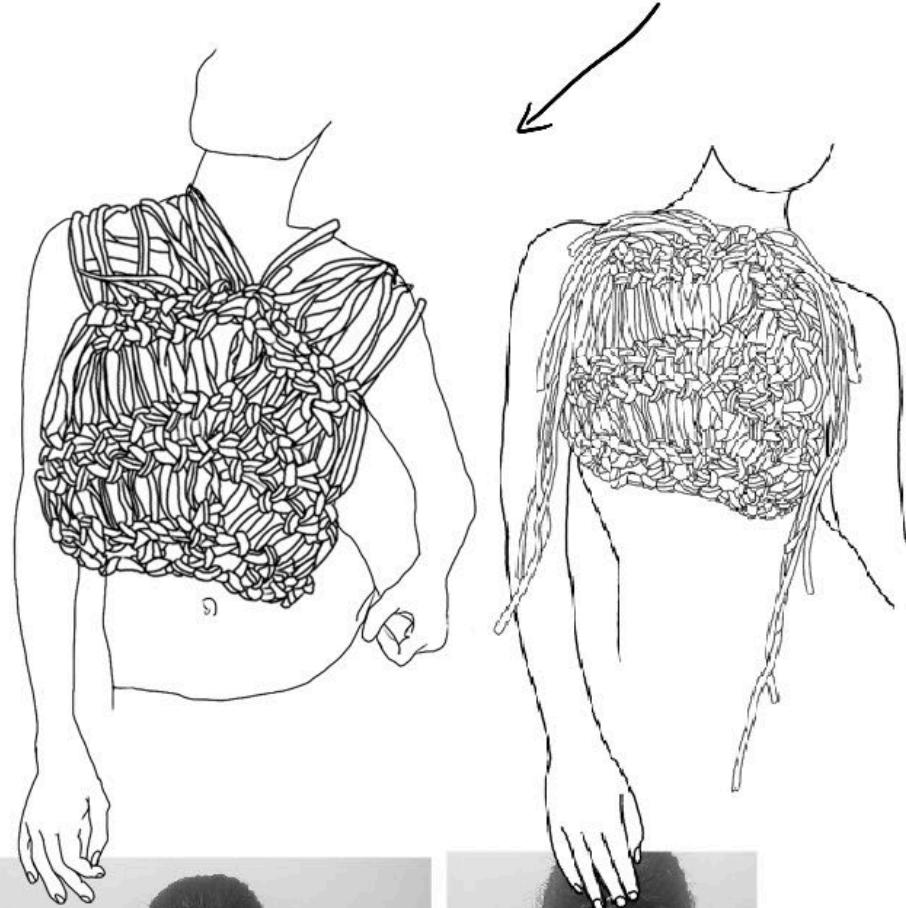
MACRAME
PLACED OVER
OTHER
GARMENTS



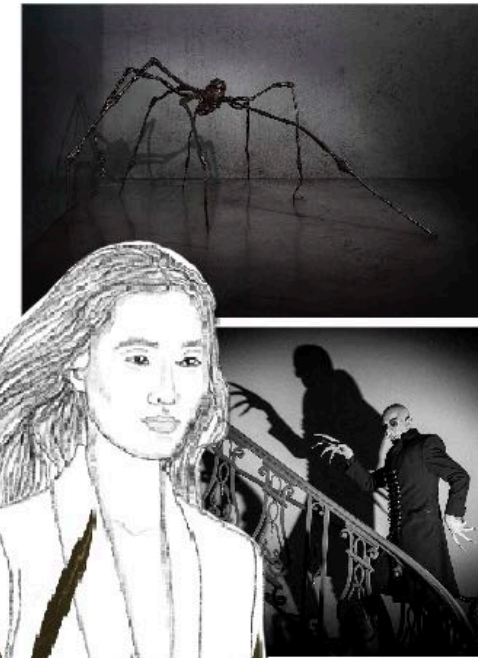
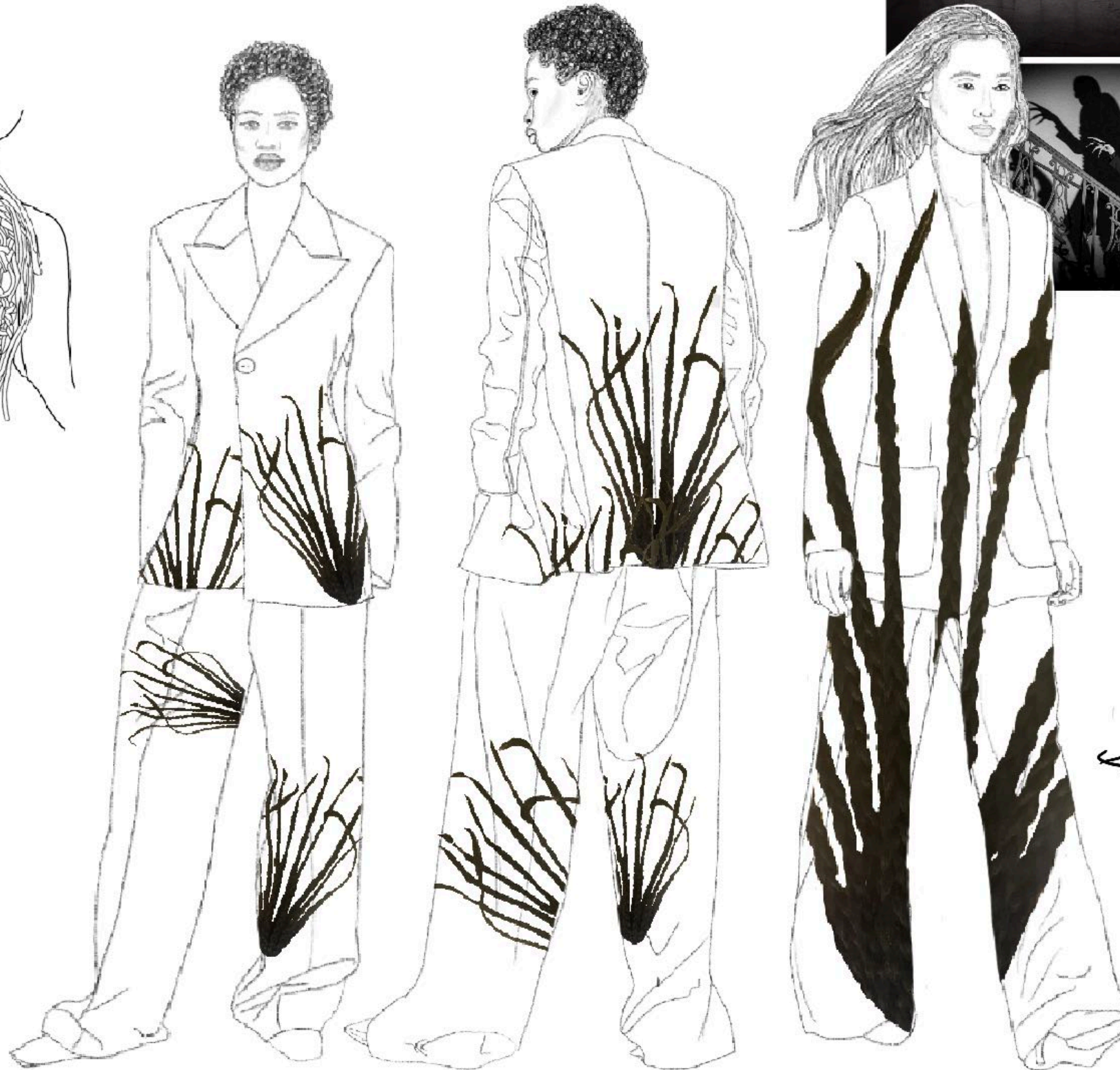
LIGHTS OUT

A/W 2022

MACRAME KNOTTED TO GIVE
HAIR-LIKE STRUCTURE.



PLAITING + STYLING HUMAN
HAIR FOR SAMPLES.



SPIDERS, HANDS,
GROWING TREES.

IMAGE OF HAIR
USED AS PRINT.

- ON TOP OF
TAILORED SUITS
- CONTRASTING EVERYDAY
LIFE + NIGHT TERRORS

LIGHTS OUT

A/W 2022



OVER SIZED
COLLAR,
THROWN ON
CLOTHES IN A
HURRY.
↳ PANIC.

RUCHING
OF DRESS
TAKEN FROM
IMAGERY OF
BEDSHEETS WRAPPED
AROUND BODY.



MIX OF
FABRICS
STIFFER +
SOFTER



CRISP, WHITE
SHIRT



NATALIA HIGHAM

LIGHTS OUT

A/W 2022



NATALIA HIGHAM

HUMAN BETTERMENT 'TOUCH'

ICEBERG A/W 2022



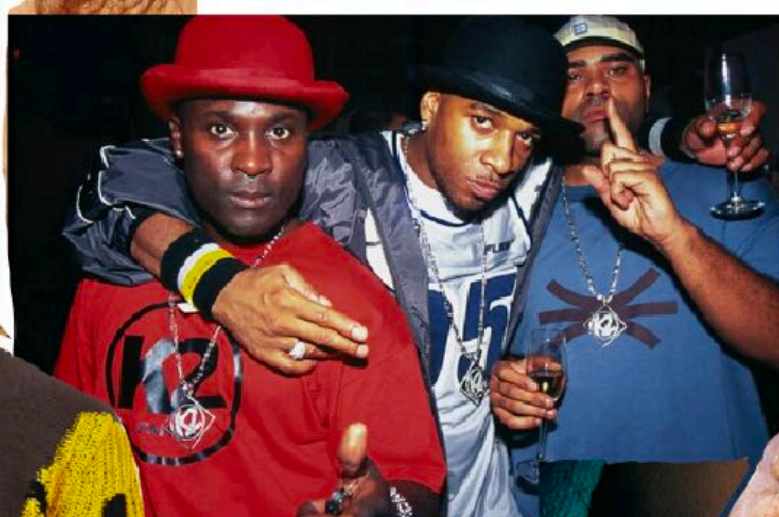
“Tis the human touch
In this world that counts,
The touch of your hand and mine,
Which means far more
To the fainting heart
Than shelter and bread and wine.
For shelter is gone
When the night is o’er,
And bread lasts only a day.
But the touch of the hand
And the sound of the voice
Sing on in the soul always.
- Spencer Michael Free

NATALIA HIGHAM

HUMAN BETTERMENT 'TOUCH'

ICEBERG A/W 2022

PANTONE 18-1553 TCX Adrenaline Rush	
PANTONE 19-3952 TCX Surf The Web	
PANTONE 18-5338 TCX Ultrasatna Green	
PANTONE 12-0643 TCX Blazing Yellow	



PANTONE 13-1024 TCX Buff	PANTONE 18-1155 TCX Sugar Almond	PANTONE 19-4008 TCX Meteorite
--------------------------------	--	-------------------------------------

Neutral colours like beige and brown and natural fabrics such as wool and cotton mirror the feel of my concept 'touch'- the colours represent skin tones and fabrics represent the natural need for human touch. I wanted to add pops of colour to my designs inspired by the 90's garage scene and also to portray the serotonin being released in the body.



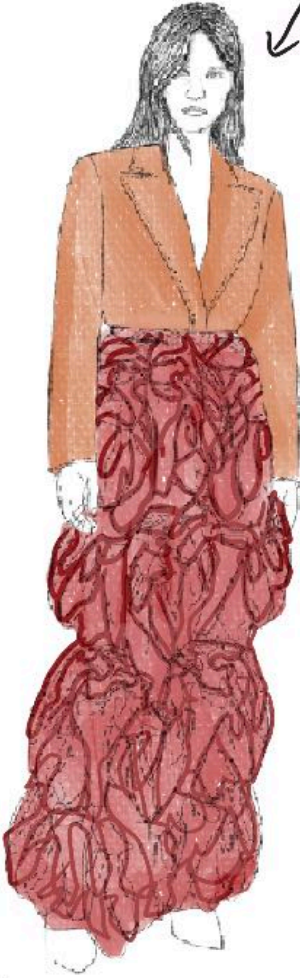
HUMAN BETTERMENT 'TOUCH'

ICEBERG A/W 2022

LONG LABEL
BLAZER,
RUCHED
SLEEVE



RUCHED MIXED-TONE
FABRIC SKIRT



RUCHED
FABRIC
DRAPED OVER
BLAZER



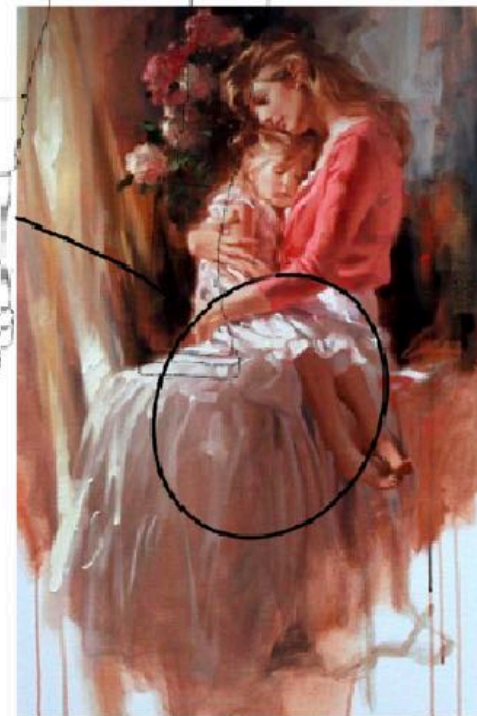
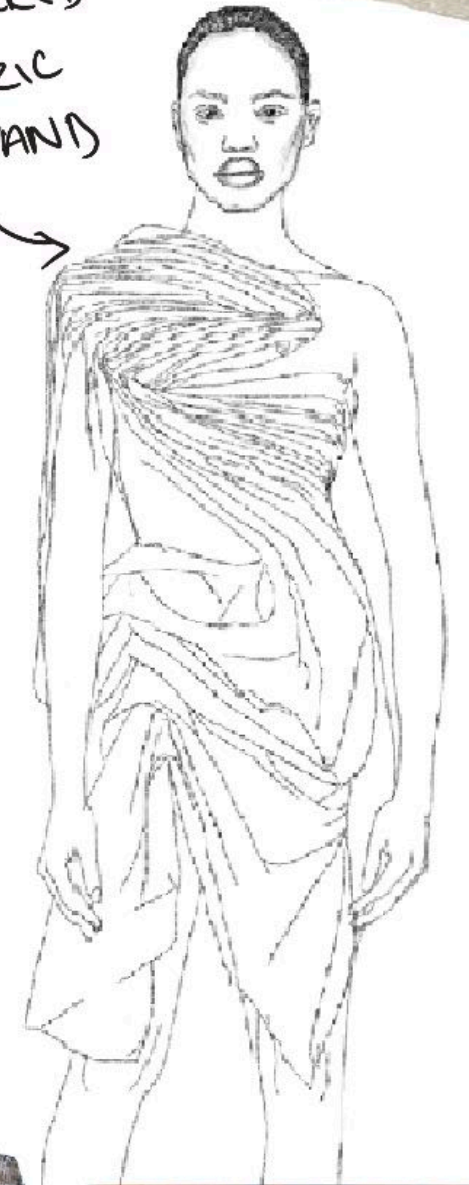
RUCHED FABRIC

MULTIPLES



PLAYING
WITH SCALE

GATHERED
FABRIC
ON STAND



NATALIA HIGHAM

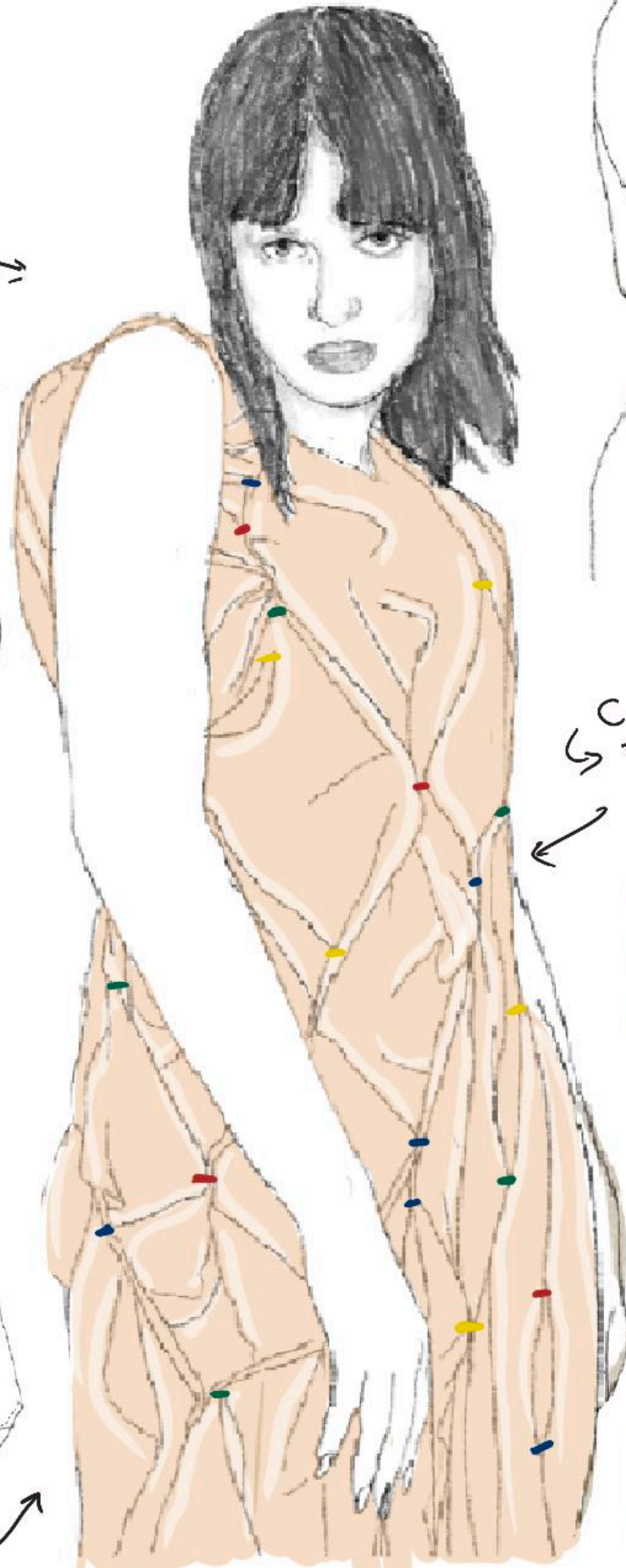
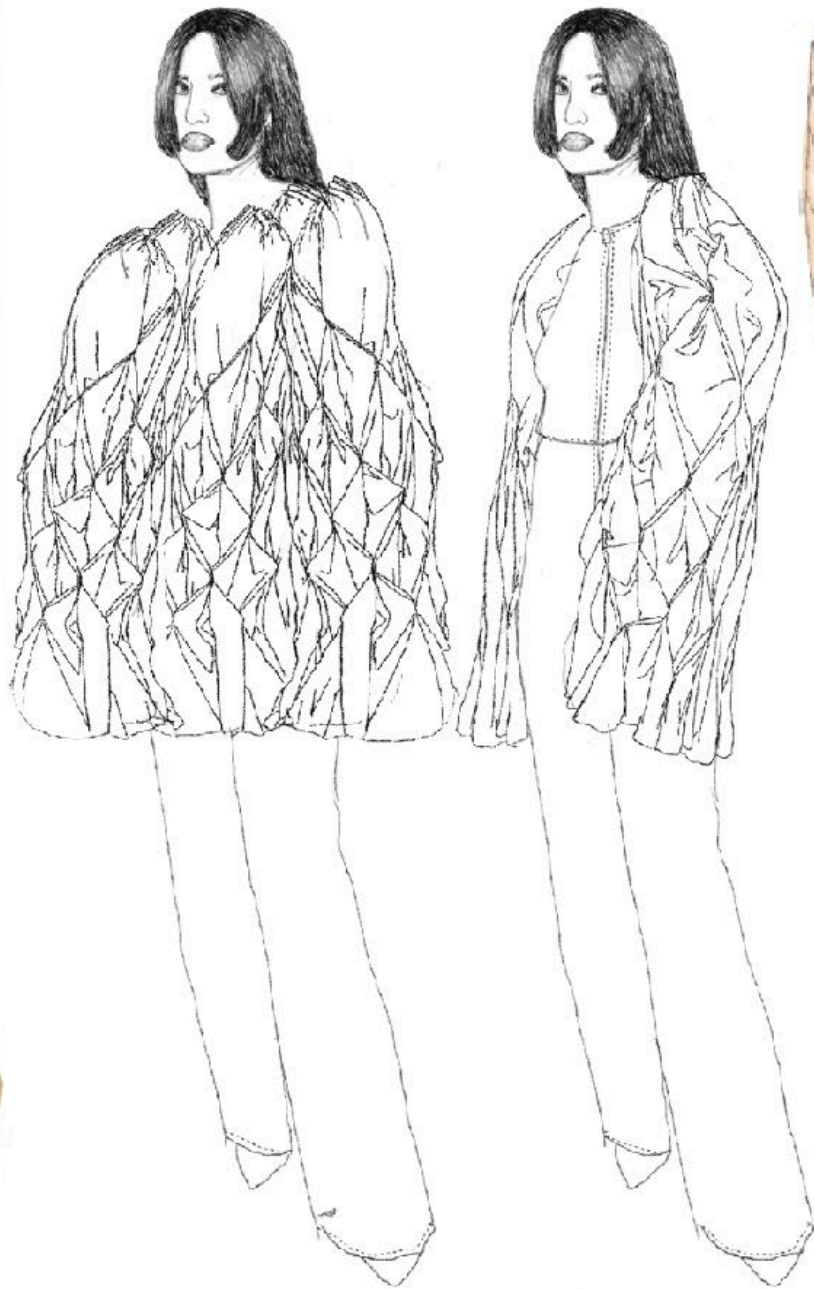
HUMAN BETTERMENT 'TOUCH'

ICEBERG A/W 2022

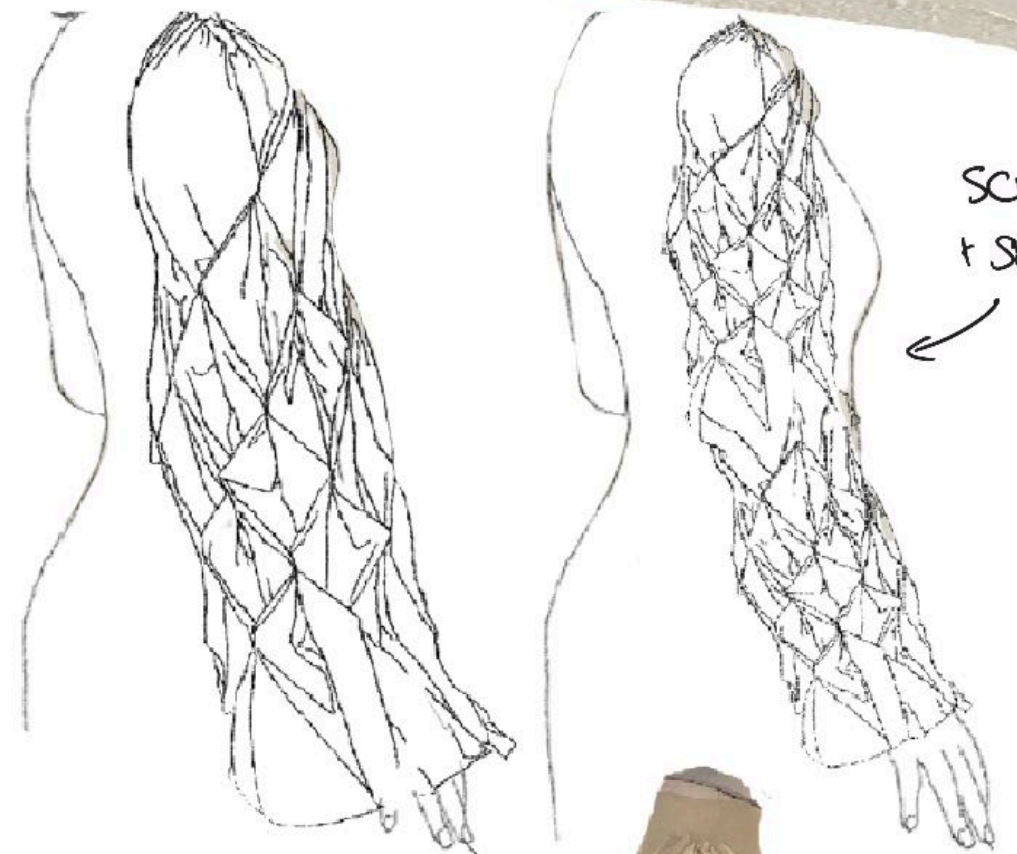
ANGULAR SHAPES

GATHERED + TACKED
FABRIC

SCALE
+ SHAPE



COLOR
THREAD



ANGULAR SHAPES
INSPIRED BY SEROTONIN
CHEMICAL SYMBOL

NATALIA HIGHAM

HUMAN BETTERMENT 'TOUCH'

ICEBERG A/W 2022



WOOL +
KNIT

RUCHED KNOT
WITH THREADS
HANGING DOWN

ICEBERG PRINT
OVER TAILORED
BLAZER + TROUSER

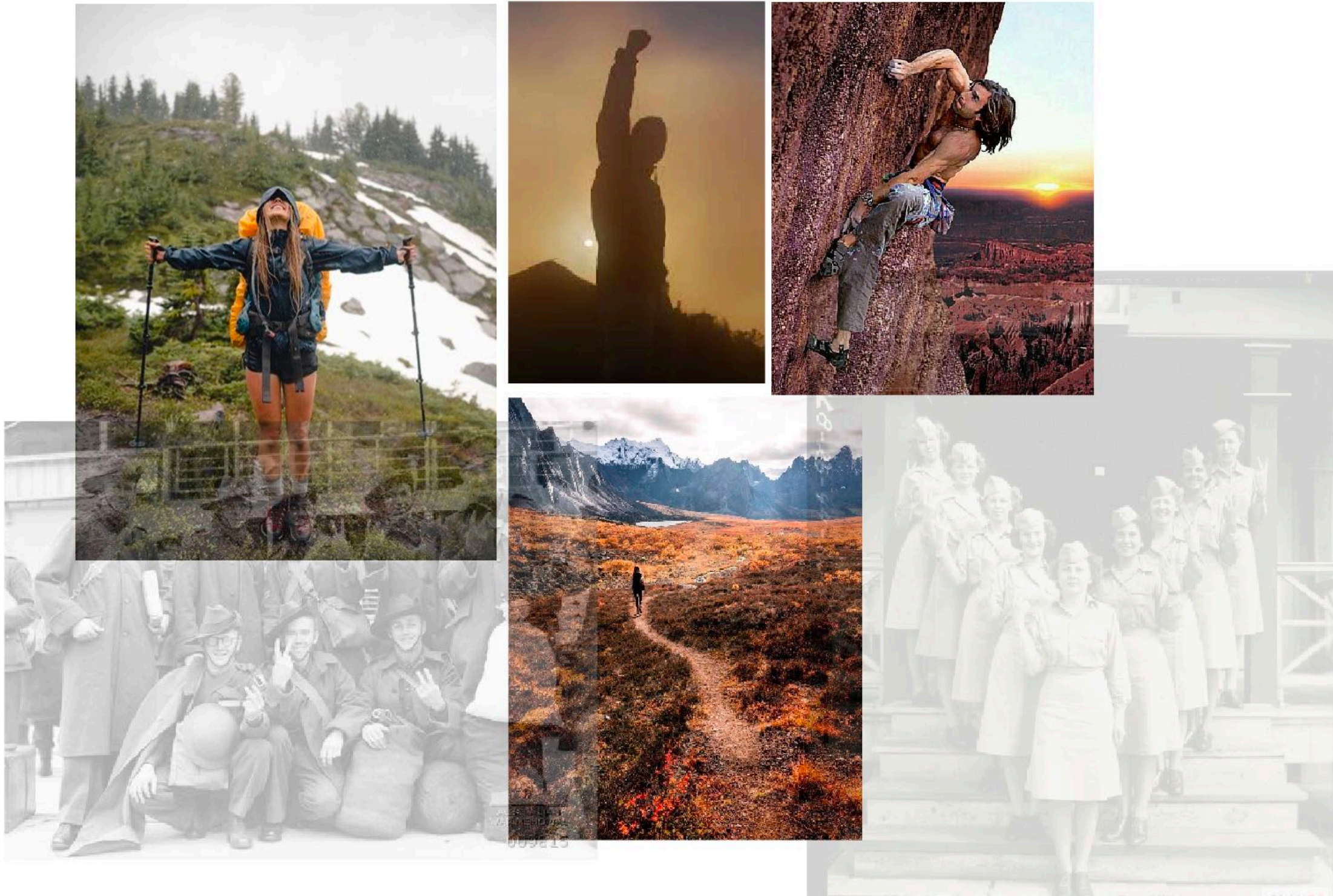
EMBROIDERED
LETTERING



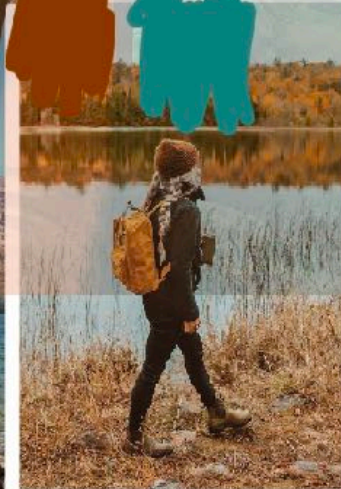
DESIGNS TONED
DOWN TO FIT
ICEBERG AESTHETIC

STITCH AROUND
EDGE OF LETTERS

NATALIA HIGHAM

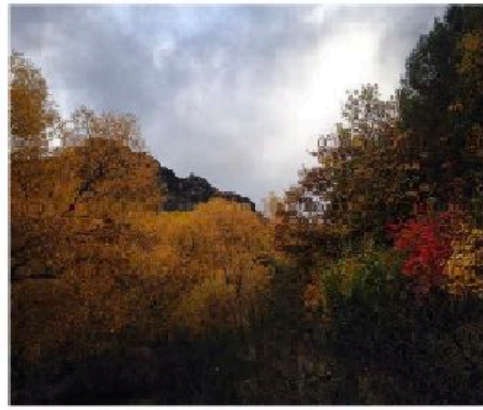


Victory at all costs, victory in spite of all terror, victory however long and hard the road may be; for without victory, there is no survival
- Winston Churchill, 1940

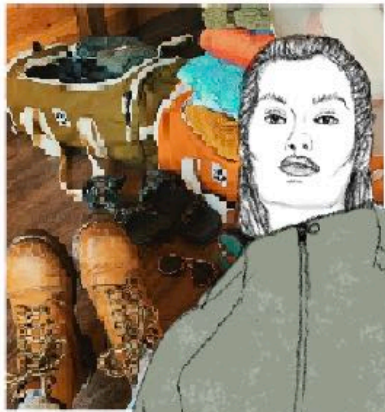


A woman in her mid twenties who has decided to travel the world with her partner, hiking, climbing, snowboarding. Pushing themselves to their limits and beyond. Setting targets and being victorious. She chooses her style based on her surroundings, incorporating the colours and prints of outdoor living into what she chooses to wear,

NATALIA HIGHAM



PRINT



'WATER PROOF MATERIAL

PRINT IDEAS



COLOUR + LANDSCAPE



NATALIA HIGHAM

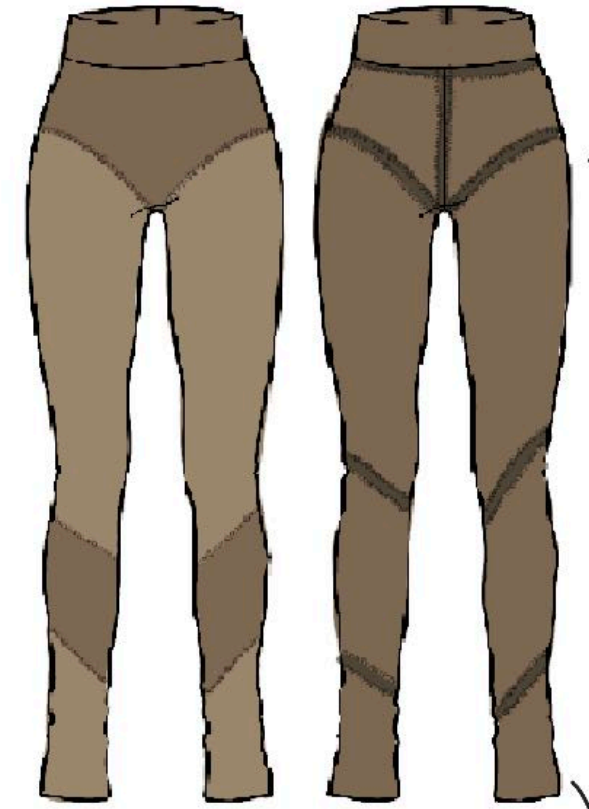
T-SHIRT
PRINT IDEAS



SCALE +
POSITION

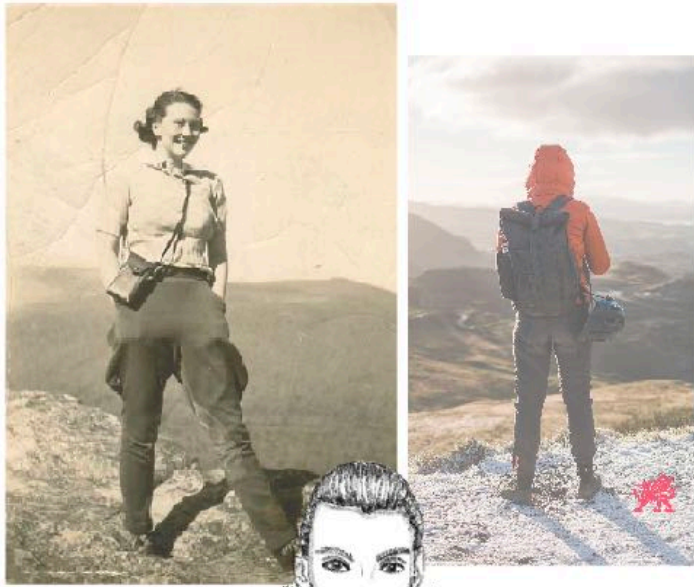


EXPOSED
SEAMS

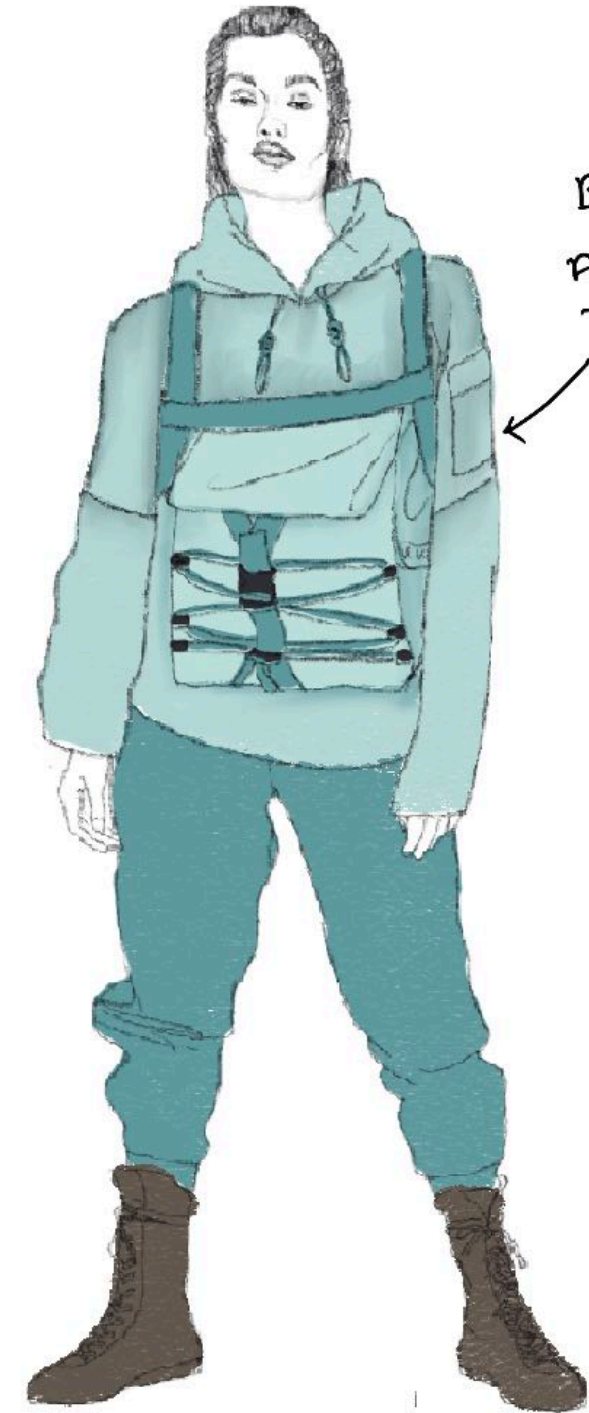


SHAPE

EARTHY
TONES.



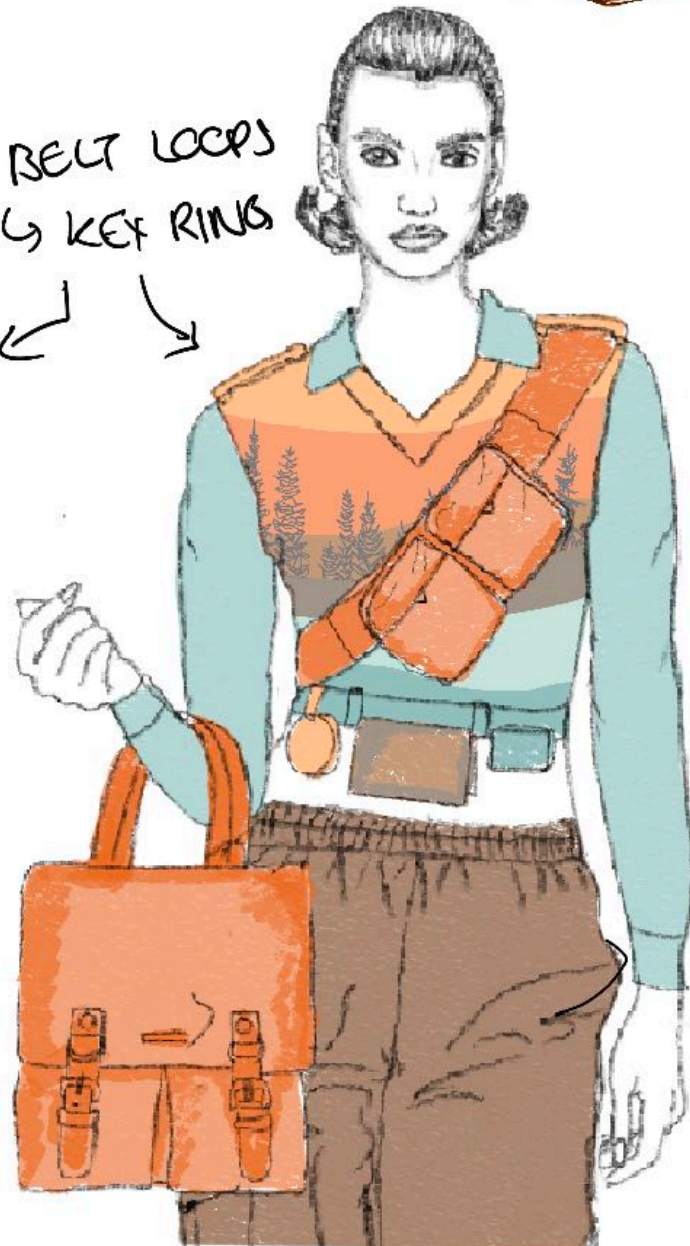
V-NECK
VEST
↳ LAYERING



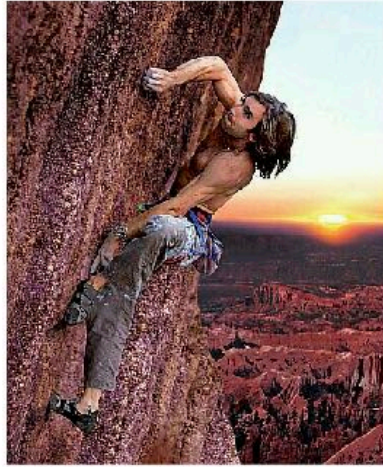
BAG
ATTACHED
TO JUMPER
↳ PRACTICAL



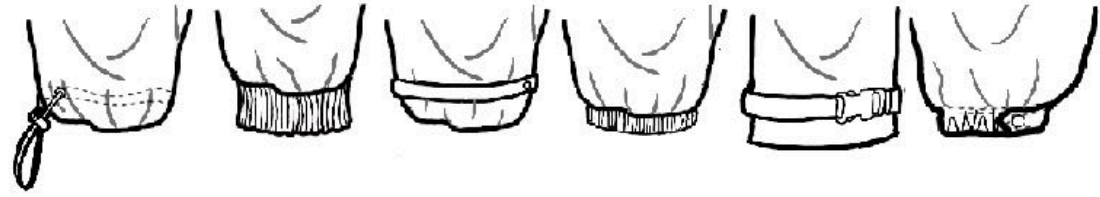
BELT LOOPS
↳ KEY RINGS



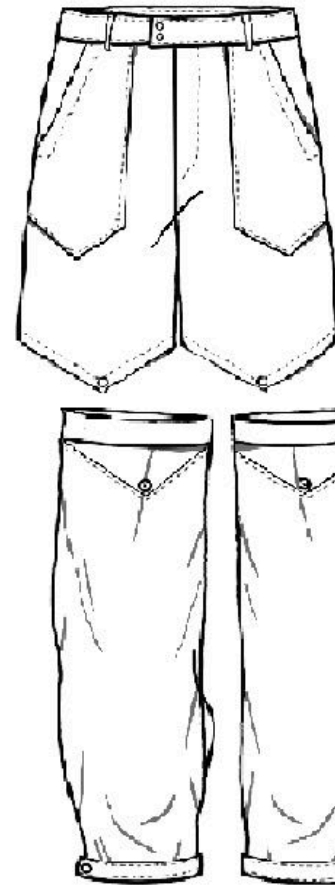
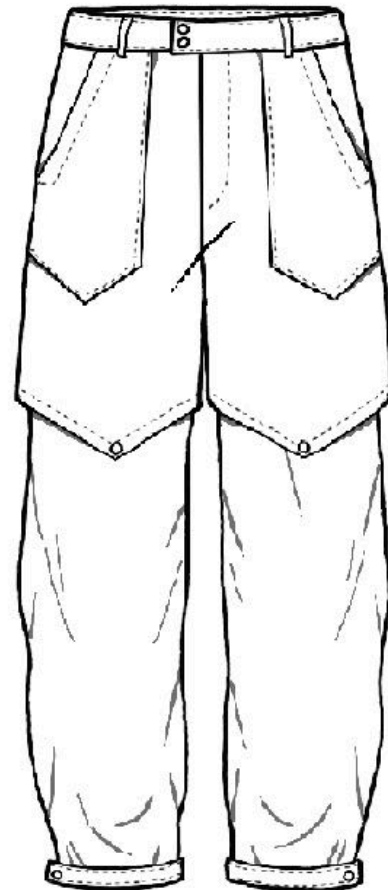
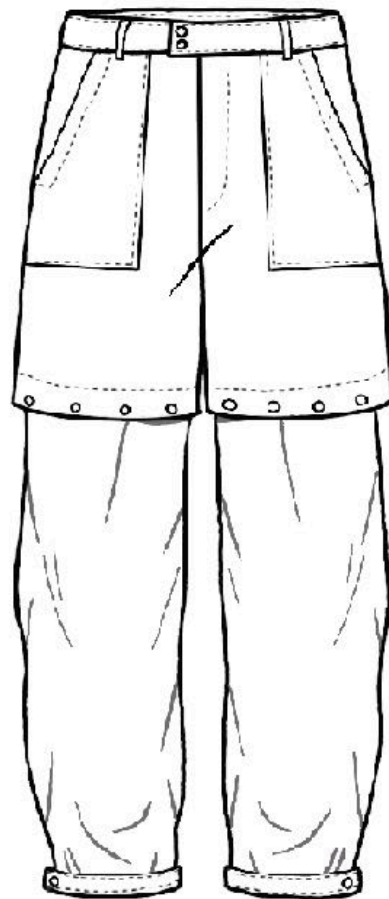
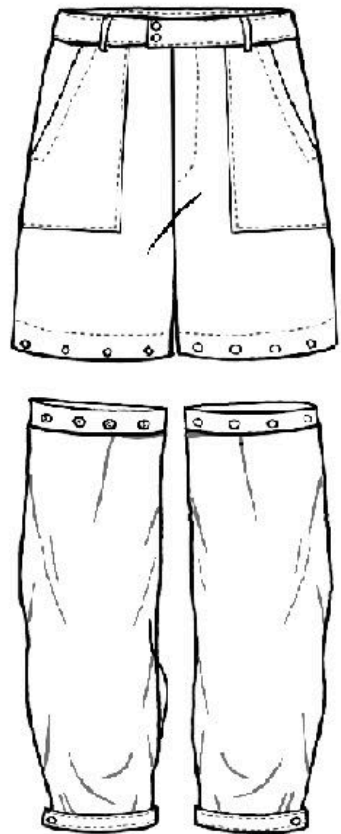
↳ BUNGEE CORD
FOR ESSENTIALS E.G WATER
↳ EASY ACCESS



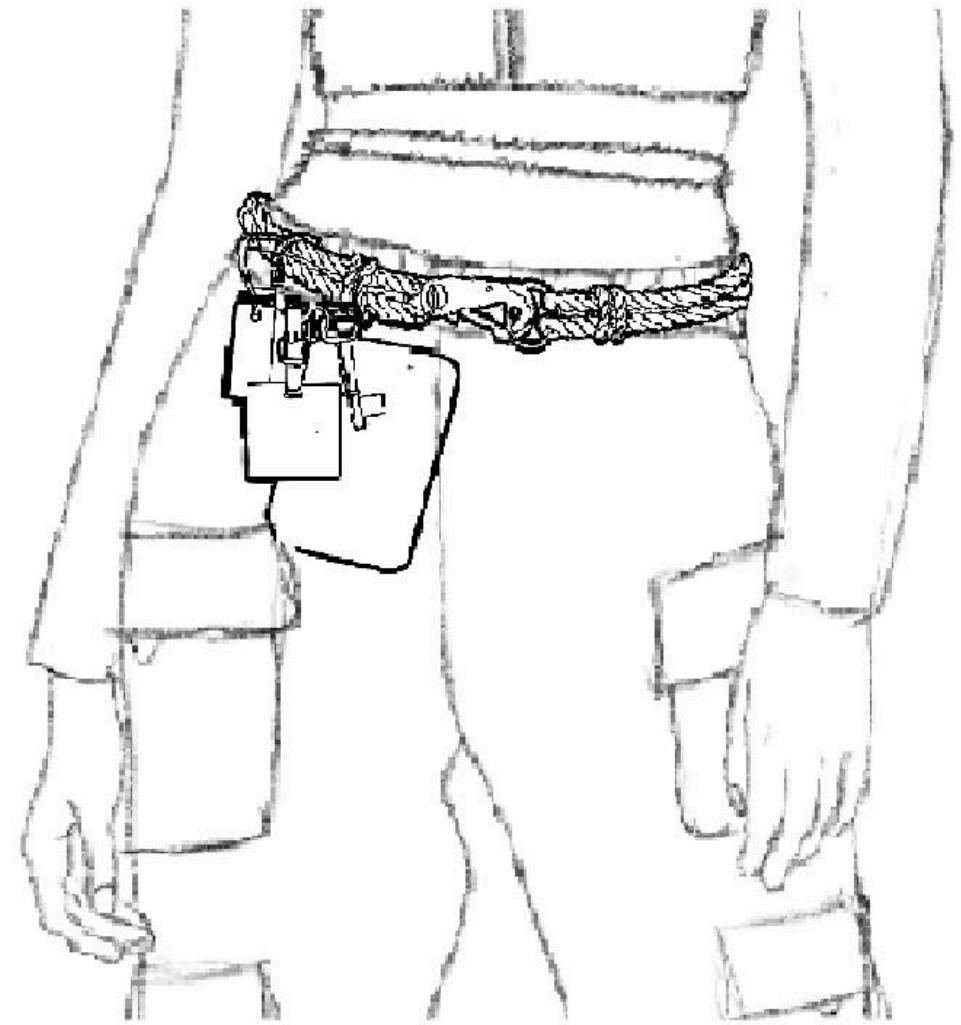
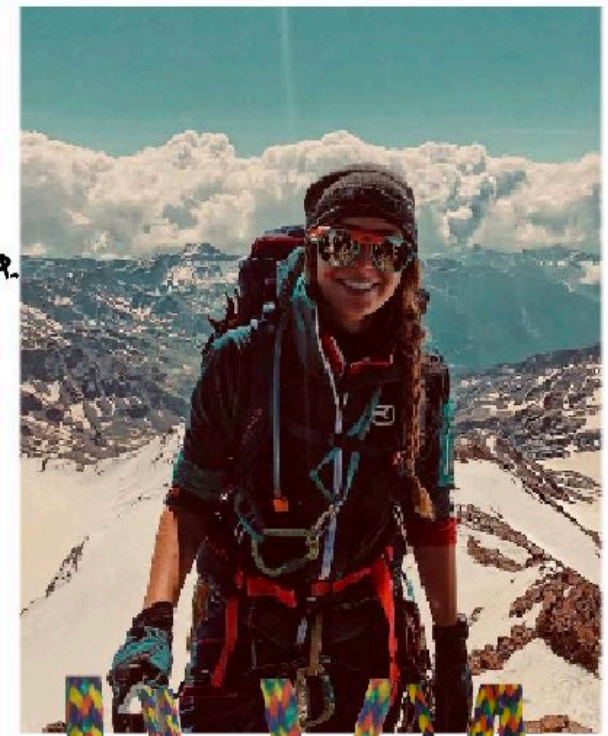
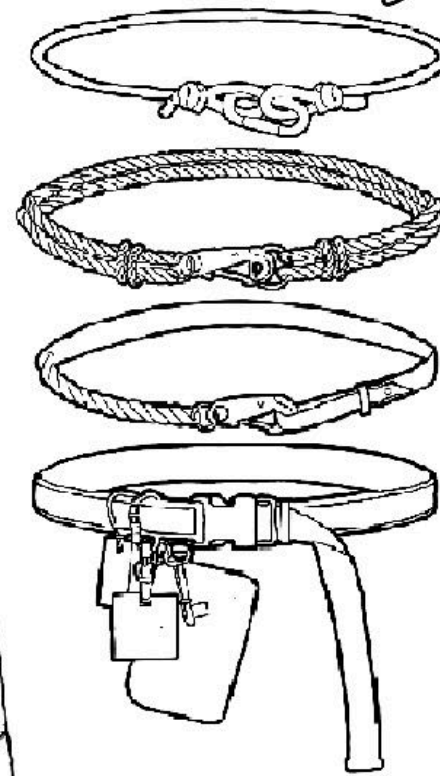
LEG CUFF IDEAS
WEATHER-PROOF.



DETACHABLE SHORTS
↳ TROUSERS

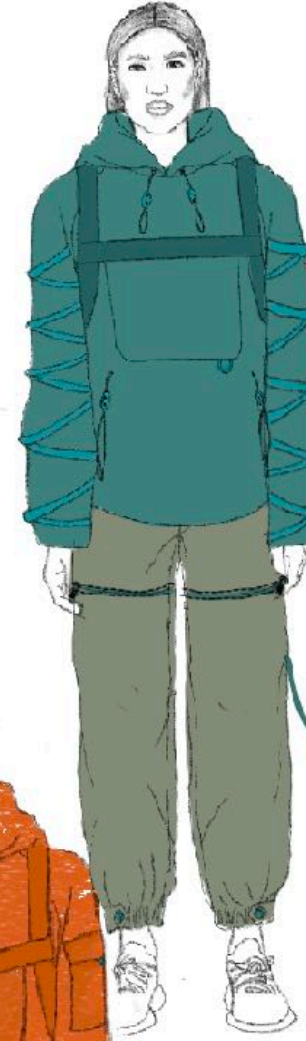


BELT-ROCK CLIMBING



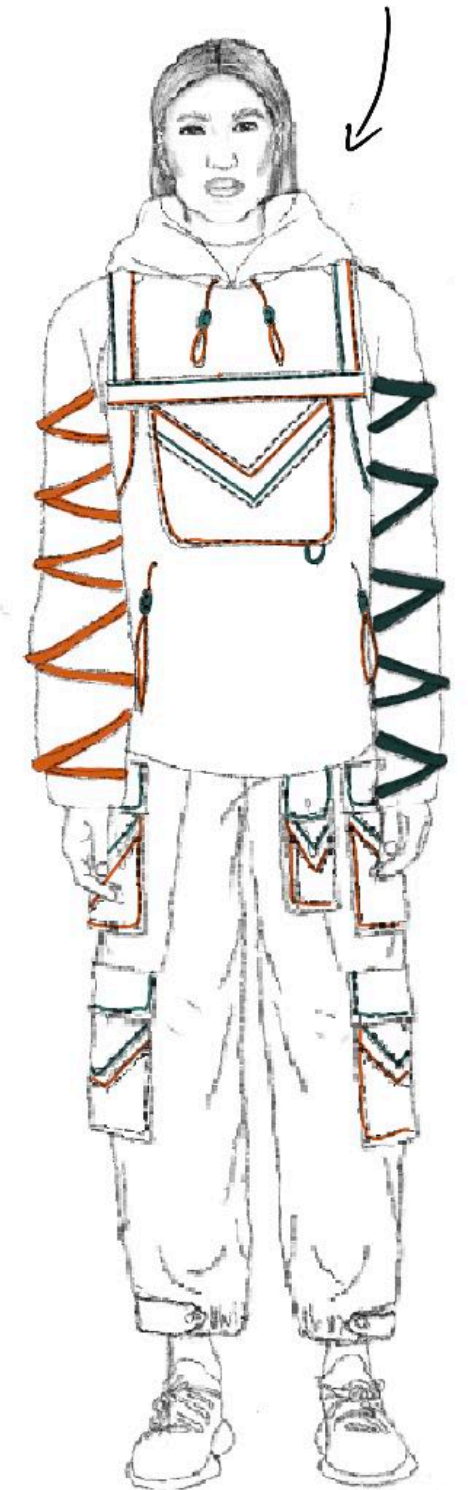
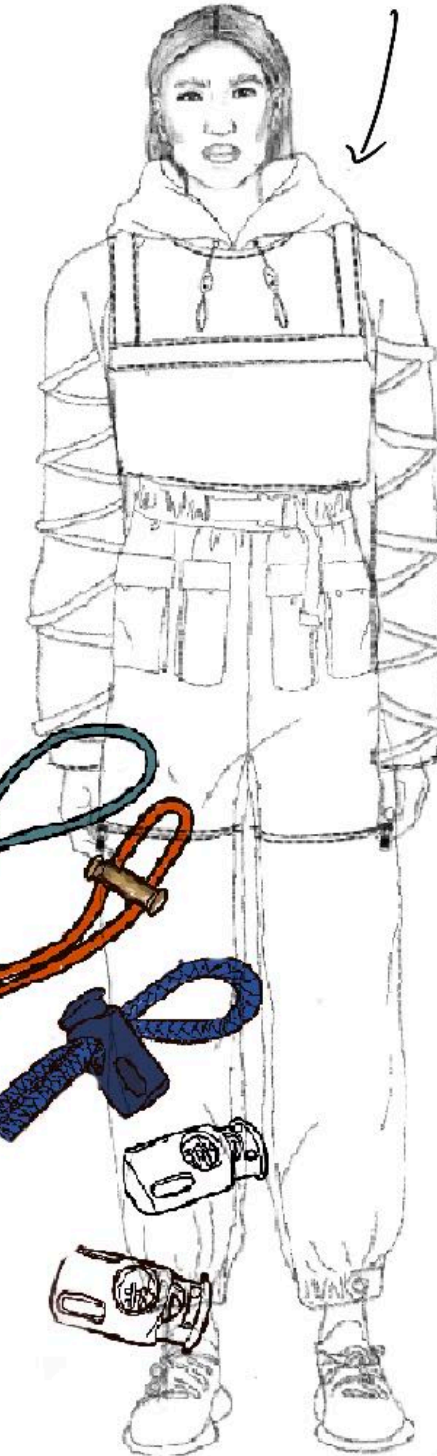


RIBBED
UNDER
GARMENTS
↳ WARMTH

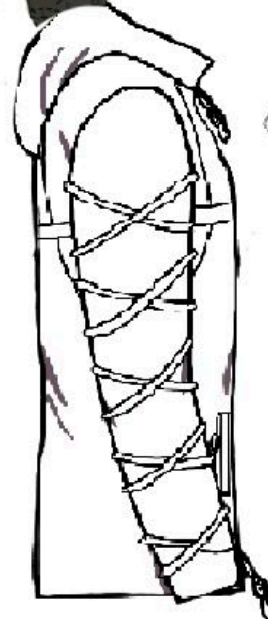


MULTIPLE
POCKETS

V FOR VICTORY



BUNGEE
CORD
↳ EASY
ACCESSIBILITY
TO ESSENTIAL
ITEMS



↳ RING FOR
KEYS



NATALIA HIGHAM



NATALIA HIGHAM