



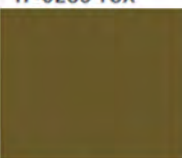
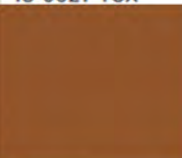
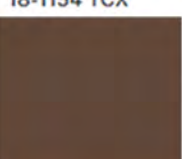
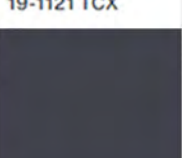


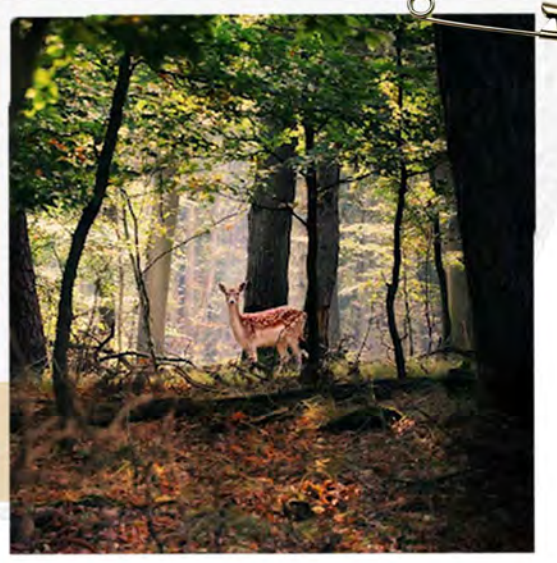
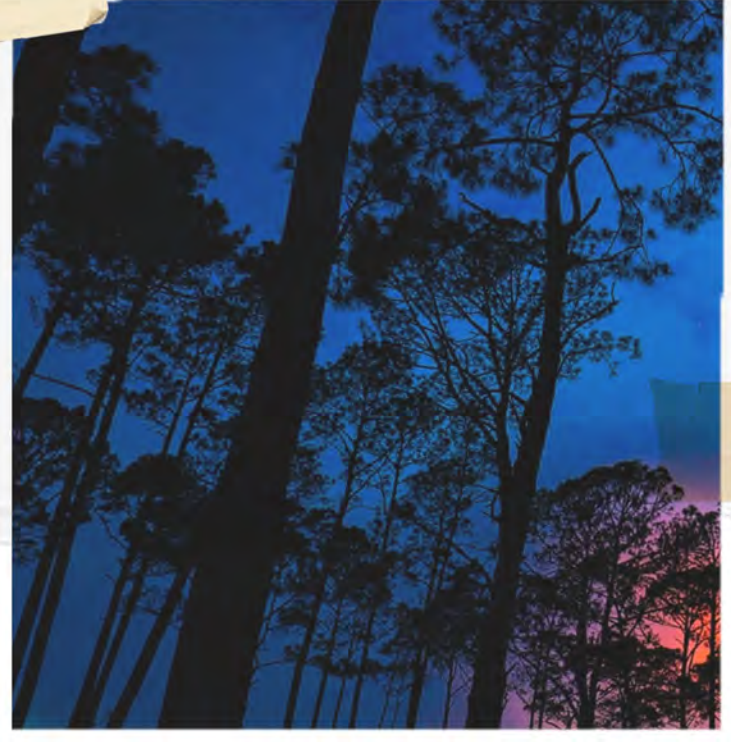
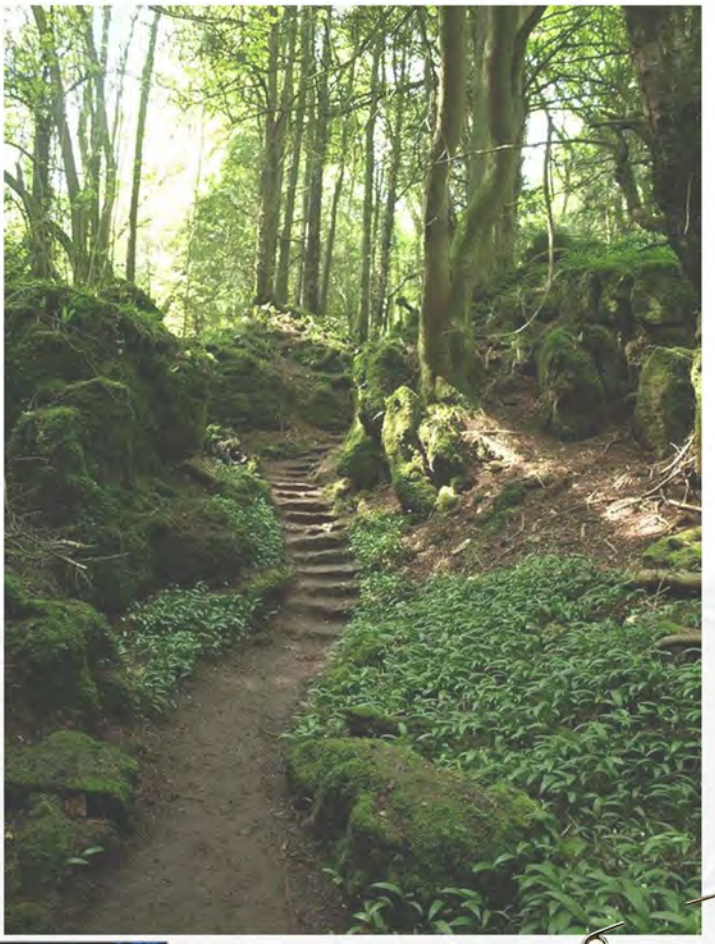
'Faery Witch'



Spirituality and Witchcraft aren't what most people think they are; they aren't scary concepts and are instead, about connecting to the world around you.

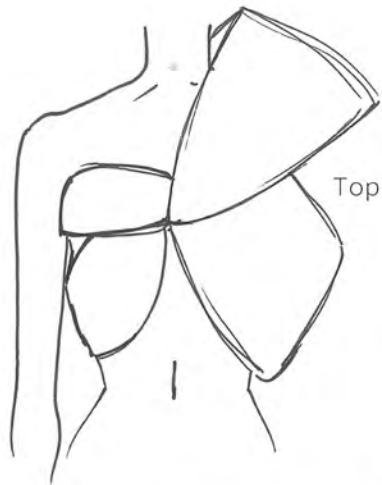


	PANTONE 11-0601 TCX
	PANTONE 11-0110 TCX
	PANTONE 12-0225 TCX
	PANTONE 17-0235 TCX
	PANTONE 18-0627 TCX
	PANTONE 18-1154 TCX
	PANTONE 19-1121 TCX
	PANTONE 19-4104 TCX Ebony

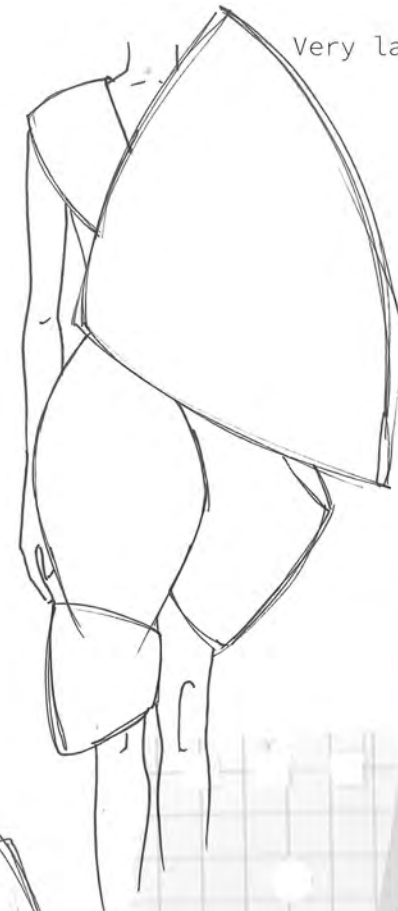


Connecting to the vast and magickal world around them by surrounding themselves with nature and living amongst the trees. Inspired by the mythical creatures they admire, they dress to become one of those mythical creatures.





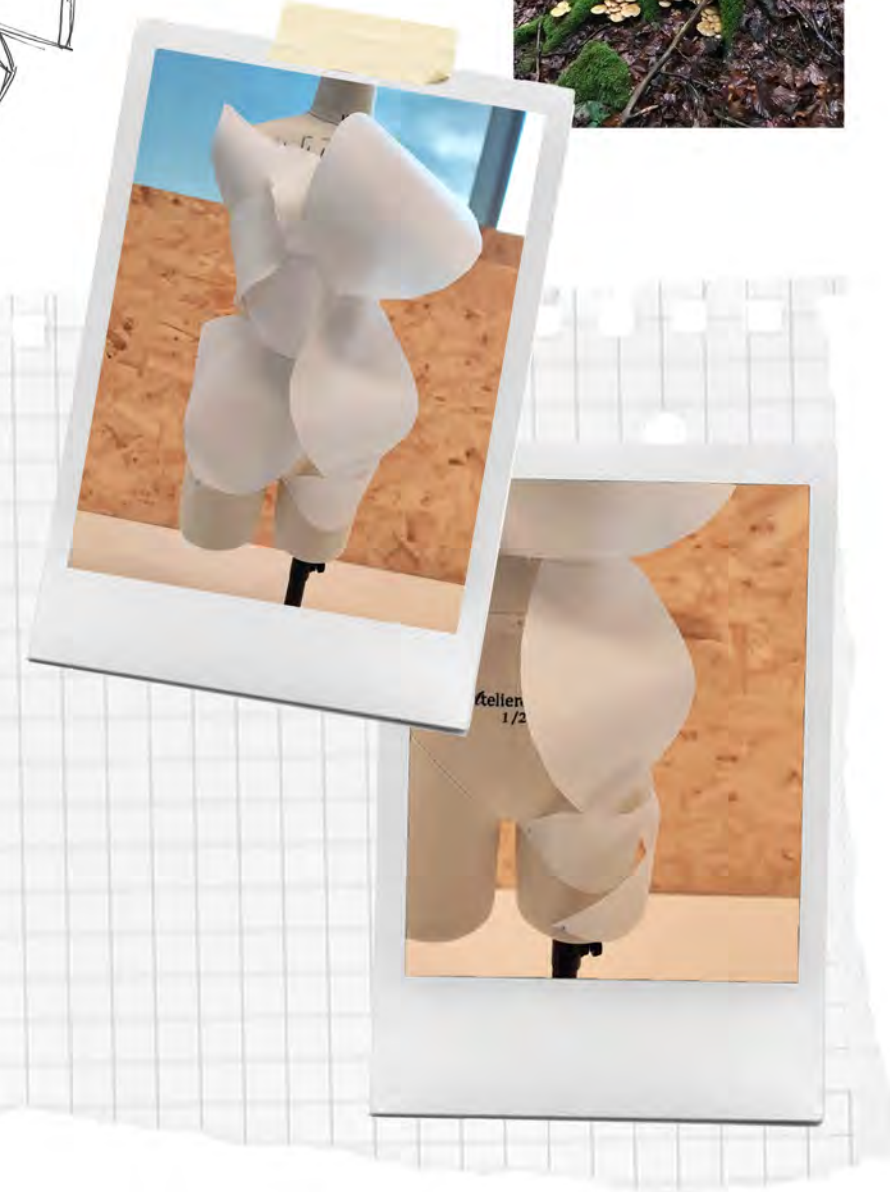
Pleated to give dimension



Multiple different fabrics

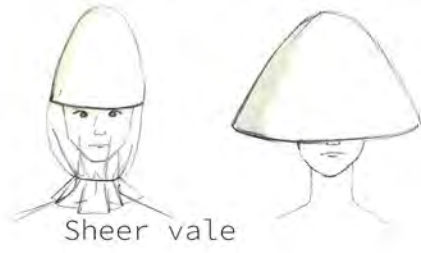


Interfacing and wire used to keep shapes rigid



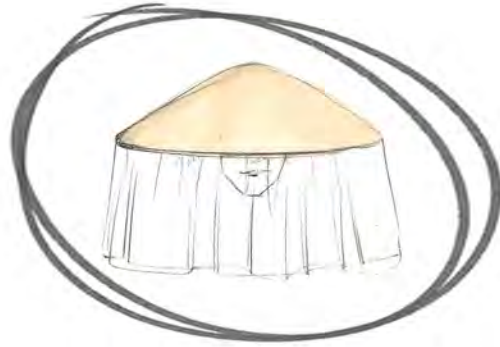
Exhadurated shapes

Different styles



Sheer veil

Inspired by the shapes of mushrooms

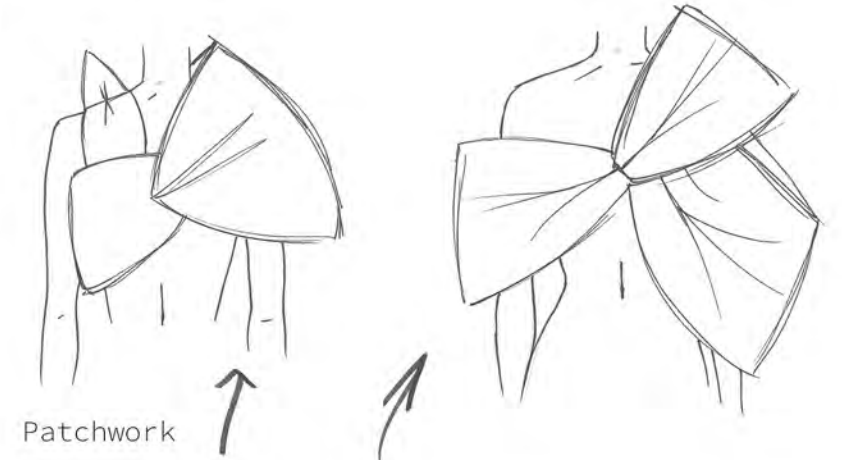


Ruched fabric under brim to look like the underside of a mushroom

Sheer veil to look like rain or mist



Individually draped to make it unique

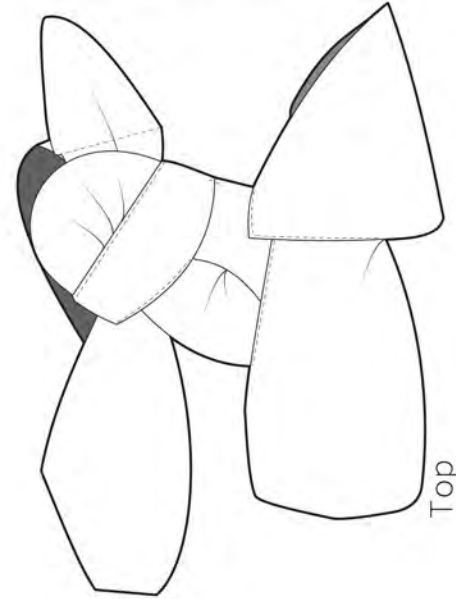


Patchwork

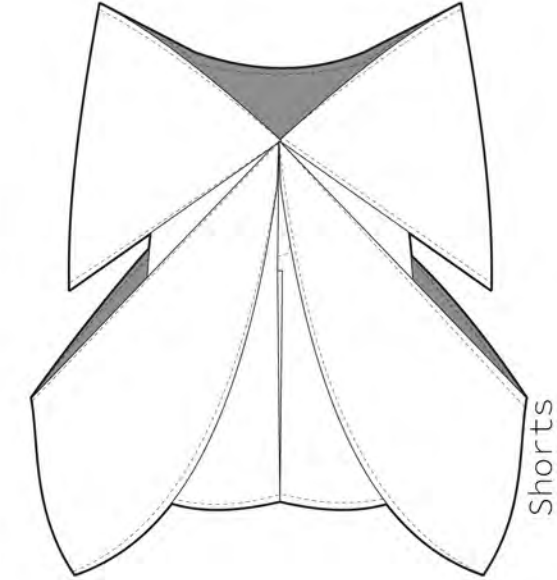
Large shoulder piece

Cape style piece on back for movement

Add interfacing



Top



Shorts

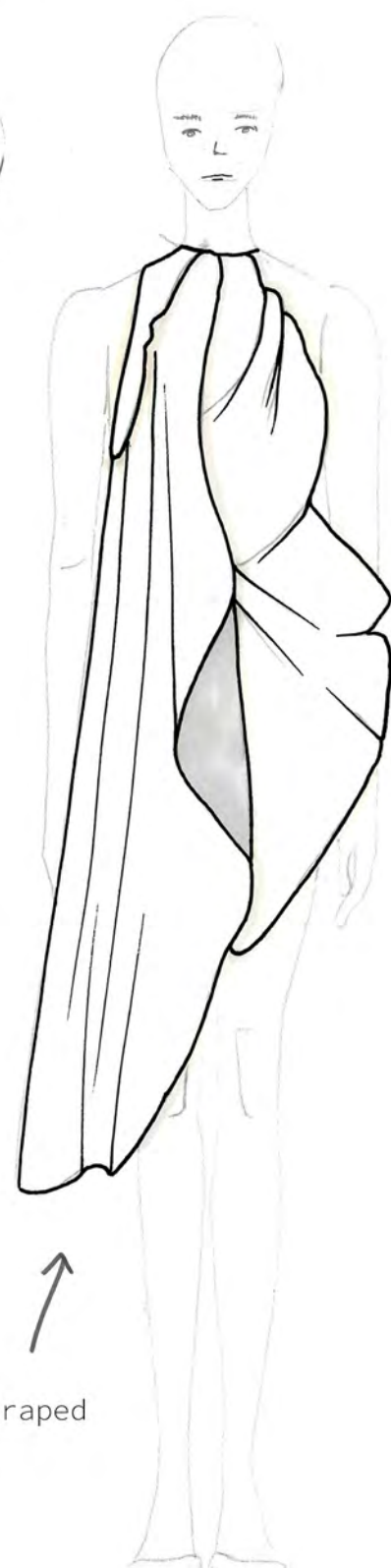


Toile 2

Sheer fabric layers to give dimension

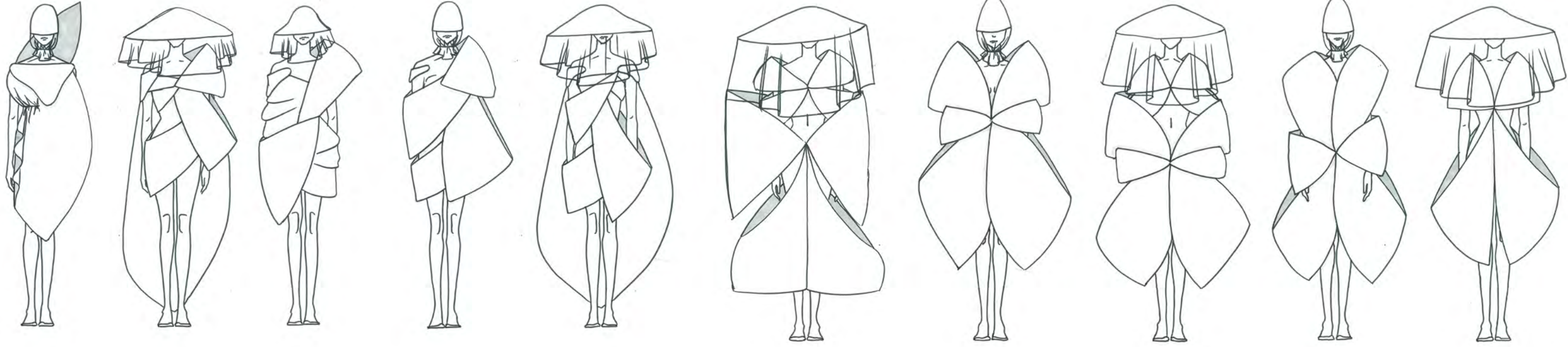


Long cape for movement, made from one large piece



Draped







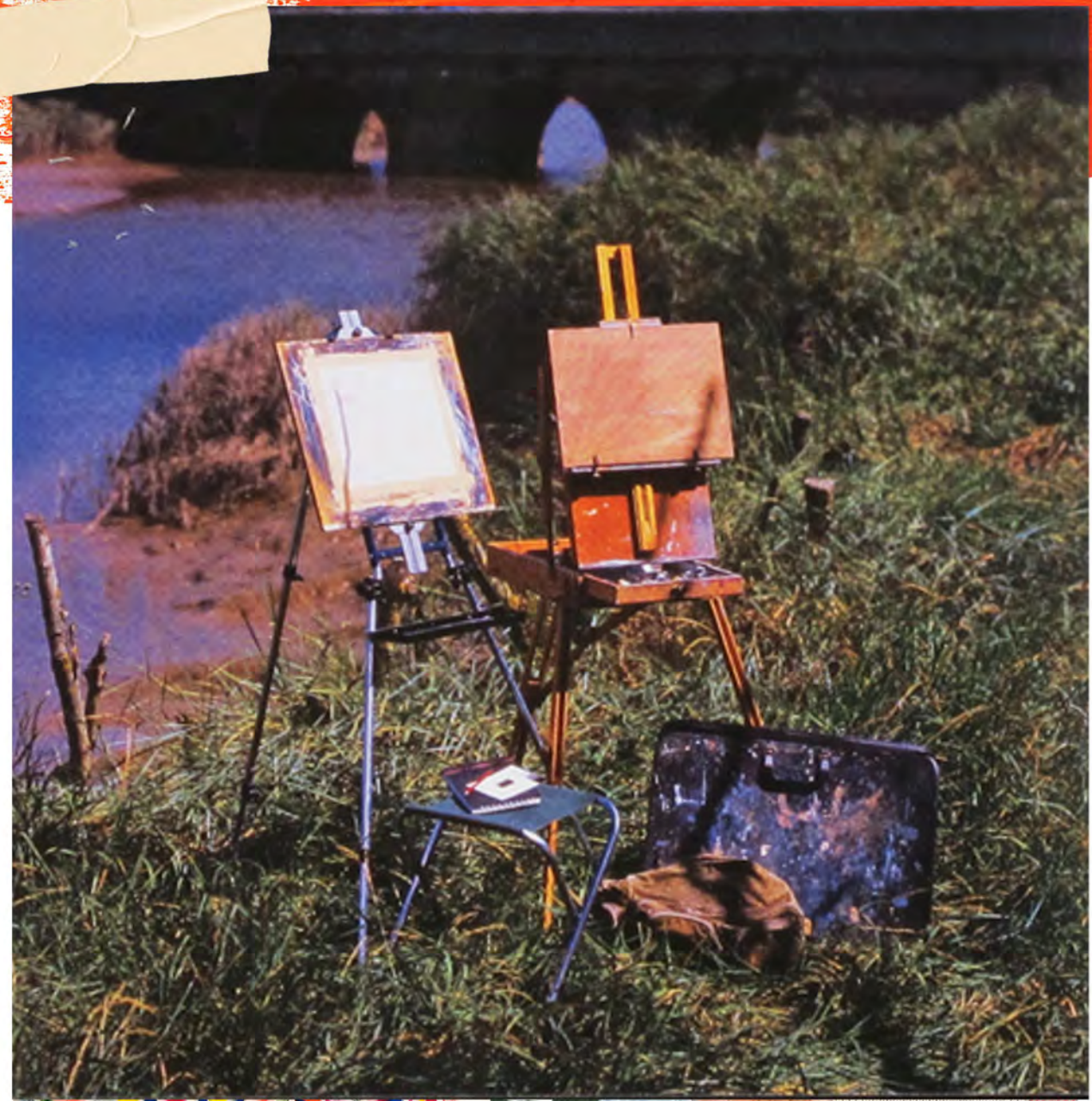
'En Plein Air'



“fiel pero desdichado”

“What is the use of living if it be not to strive for noble causes and to make this muddled world a better place for those who will live in it after we are gone?”

- Winston Churchill



Draping experiments



Favourite draped shapes



Collaging the draped shapes to create colourful outdoor wear







Original draping experiment

Front



Small elastics to help waist sit snugly



Long puffer coat as a base



Back



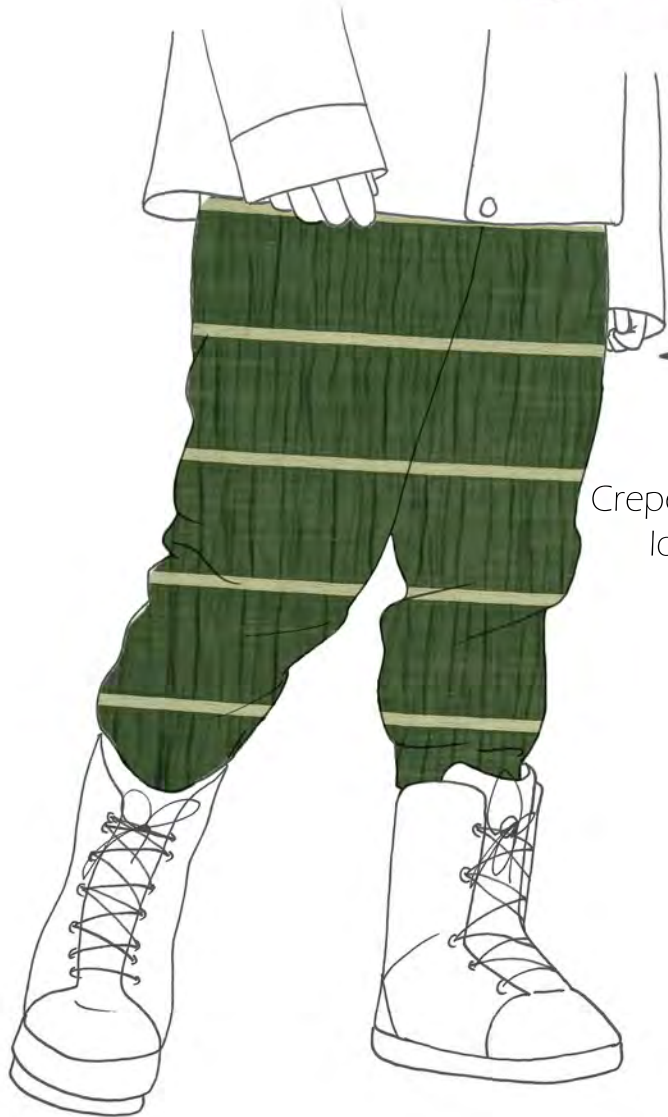
Collaged outfit



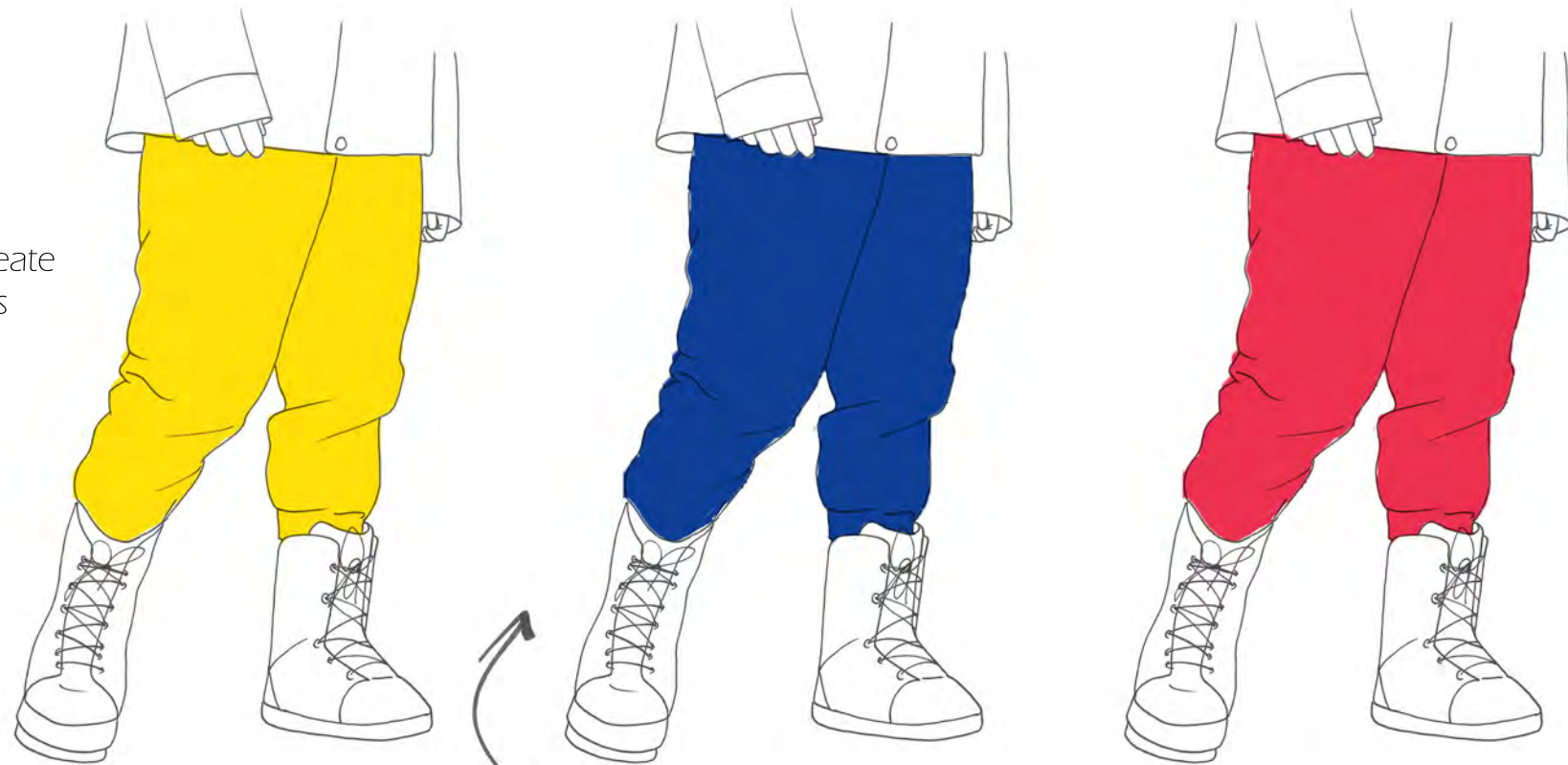


Matching trousers and coats

Berghaus print trousers



Crepe fabric used to create loose fitting trousers



Colour blocked trousers broken up by patterned coats







'Walking the Hedge'







Dress



Back closing

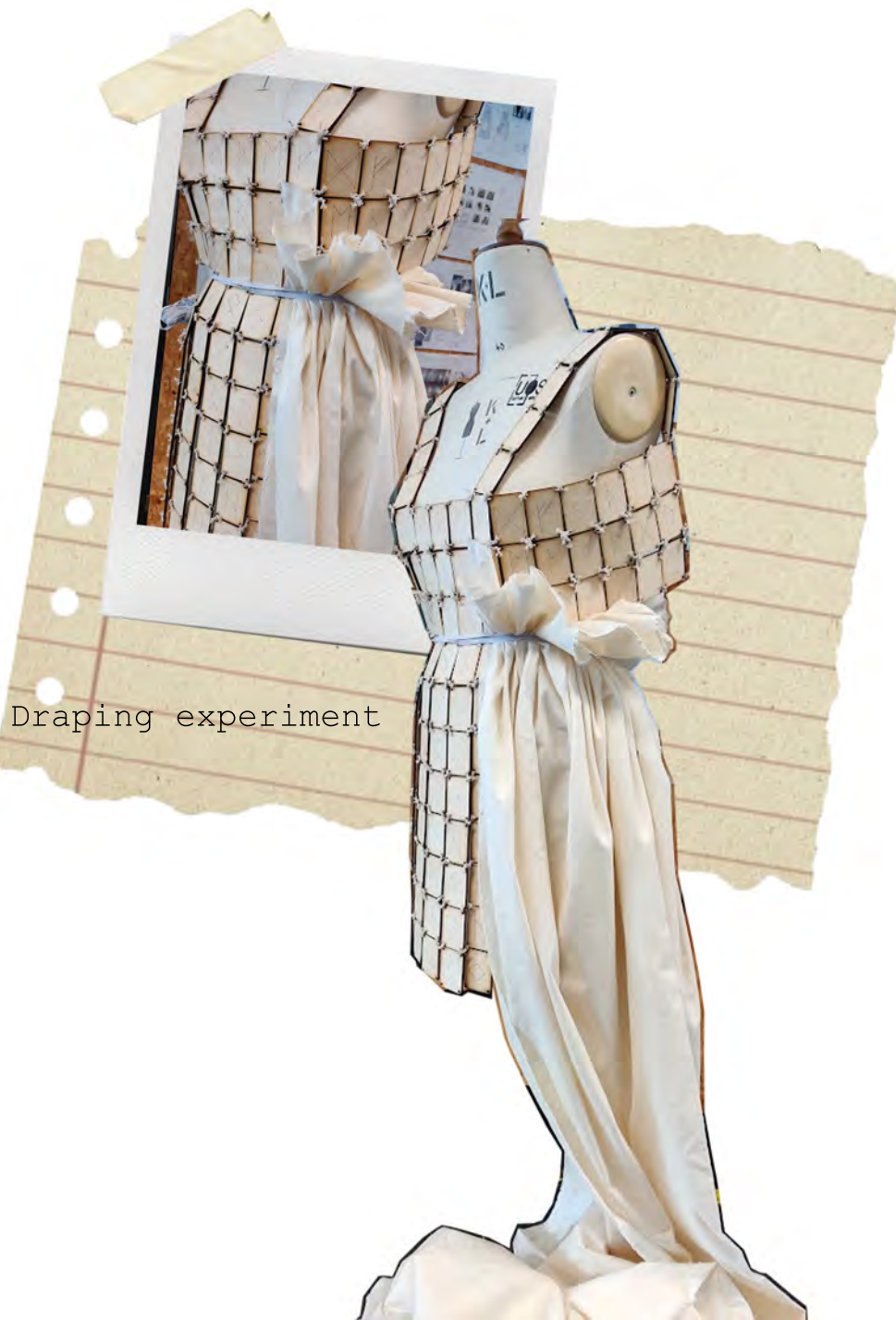
Front closing

Softening the harsh edges of the wood

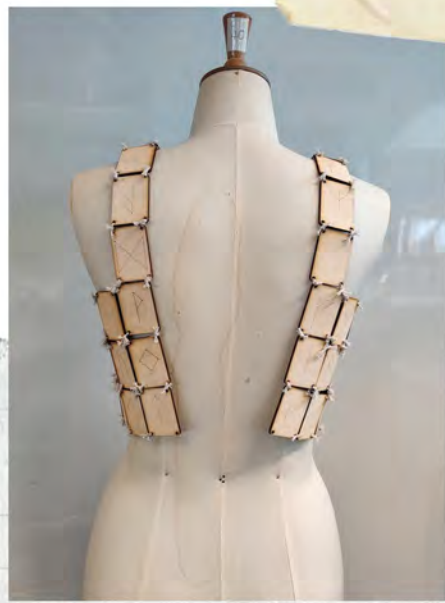


Trousers

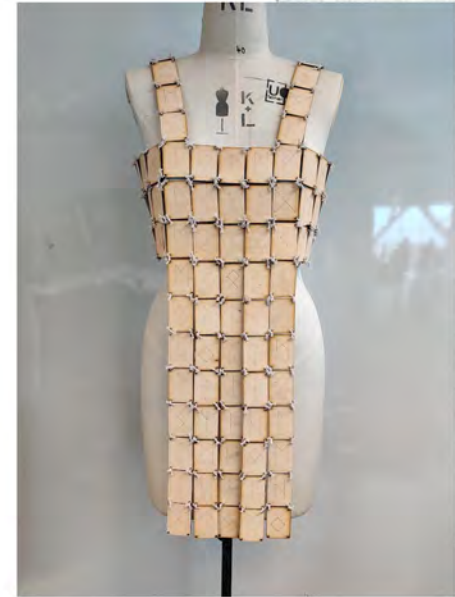
Utilitarian trousers with a clear 'protective' skirt on top



Draping experiment



Toile 2



Sketchbook

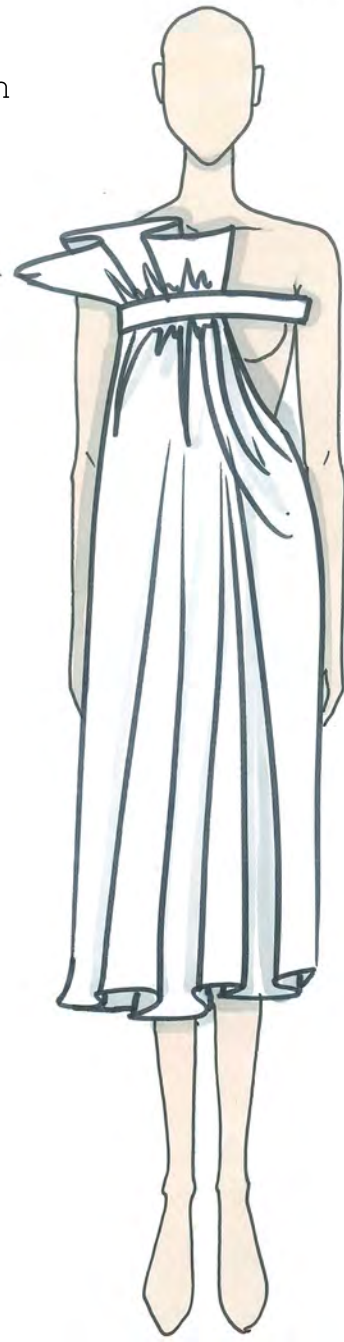




Toile 4

Apron style dress

Closure in the back



Dress with large collar



1 leg so it can be worn on top of something else



Utilitarian trousers



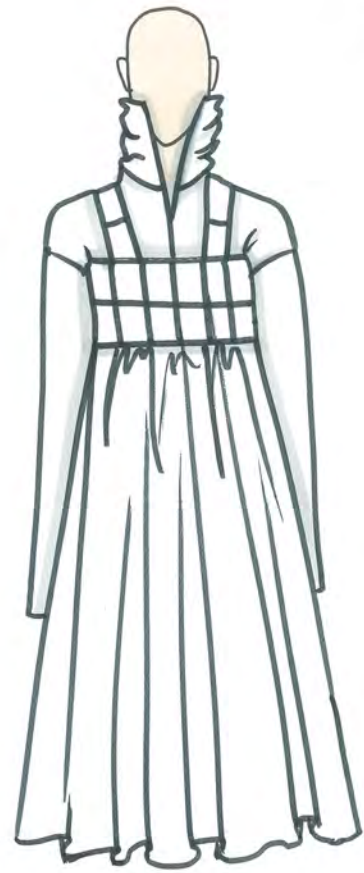
Pvc coat



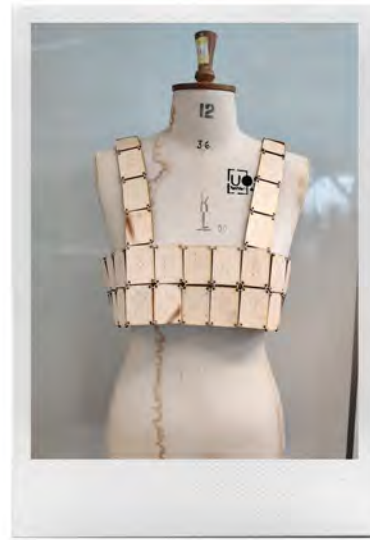
Toile 5



Tight around the wrists
for ease of movement



Thick knit



Utilitarian detail

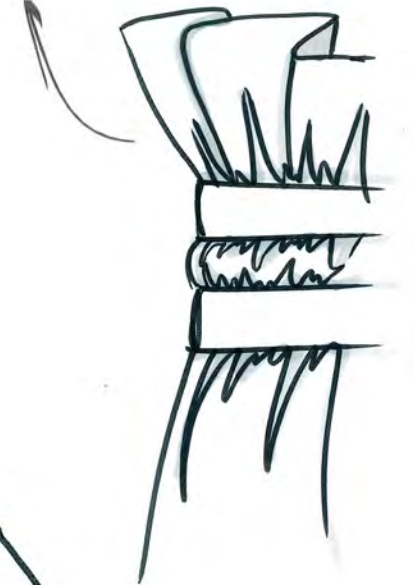


Waist bands

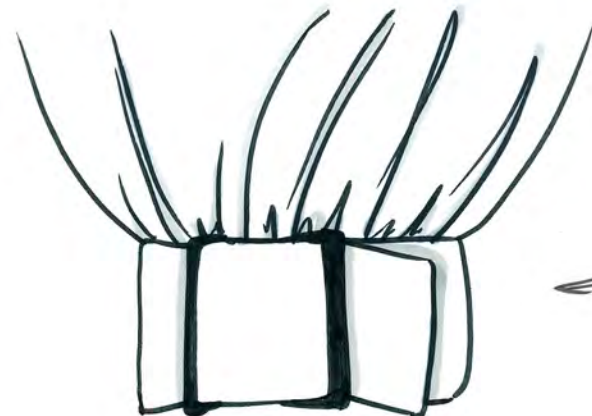
Toile 1



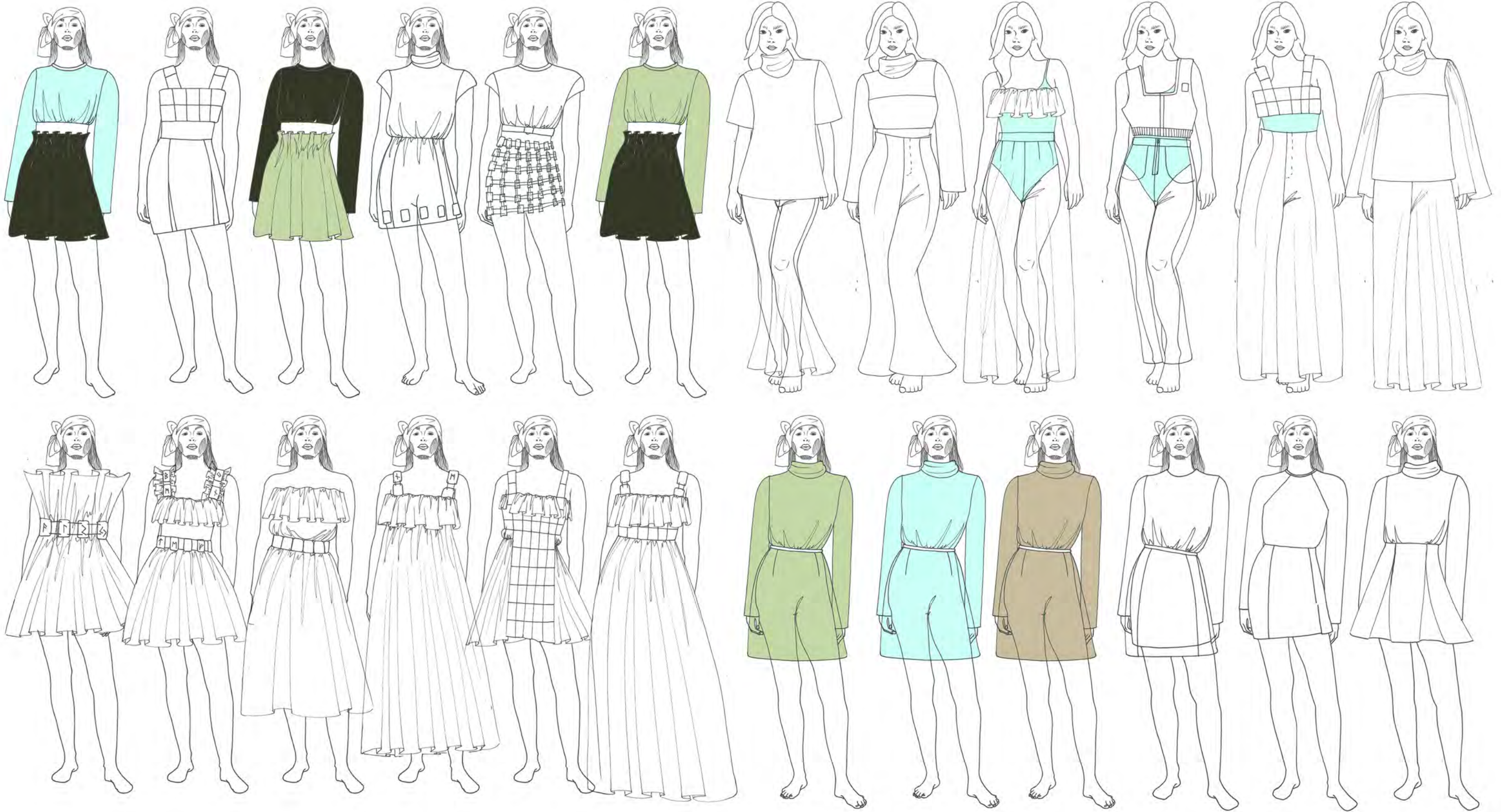
Oversized turtle
neck for warmth
and protection

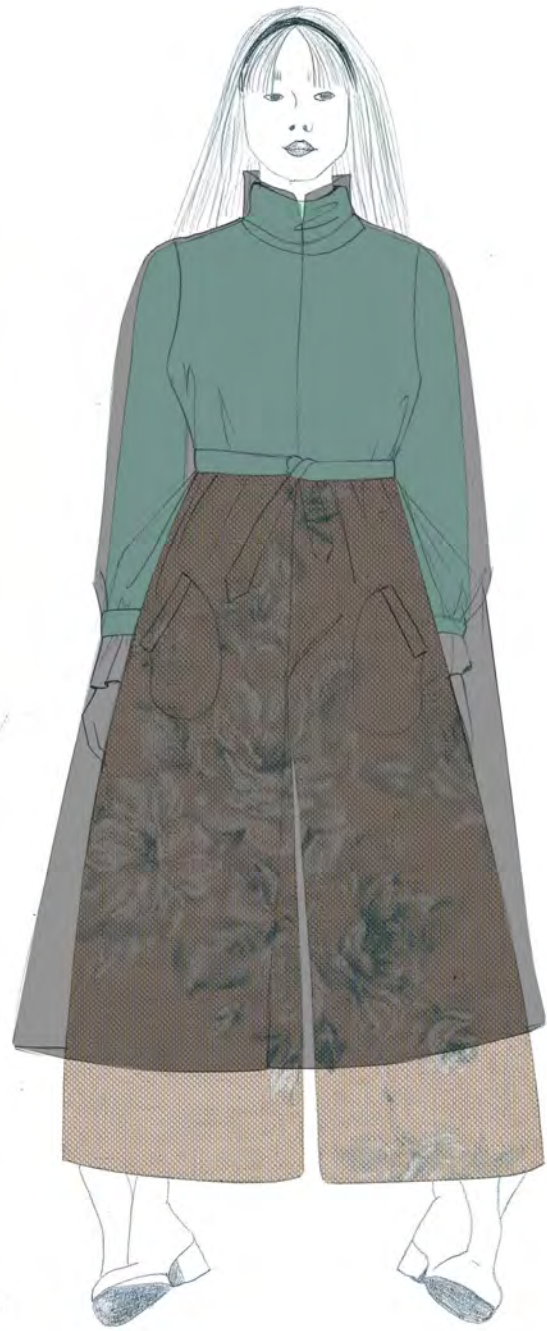


Large knit contrasts
the tight corset style top



Sleeve cuff





Final Lineup