



*Samantha Jane Chapman.  
The University of Salford, BA(hons) Fashion Design 2022.  
Manchester.*

## *Euphoric Shrapnel S/J Chapman S/S 2023*

*Imagining distorted, screen generated silhouettes and textures to inform a contemporary, non binary direction. Sammy enjoys the exploration of how garments are able to inflict happiness onto not only the wearer but also the surrounding world. Curated via draping, sculpral profiles and fluid pattern cutting. Creating shapes and exploring fabric manipulation are particular focus'. Pushing designs further with bigger shapes and intricate textiles.*

*With a non binary direction, anyone can transform into their true self one step at a time on their paths to being their most confident selves. A particular love for accessories, most prominently head and footwear.  
<https://www.linkedin.com/in/sammy-chapman-b5a9191a9/>*

100% silk soire

wax cotton

100% cotton

polyester fur

100% cotton

polyester fur

wax cotton

100% silk soire

Colour proportions

core colour

major colours

5%

Revisiting the ecentric and flamboyant era of New Romantics within the current century through the embodiment of kitch. Furs, lace and soft fabrics and well as pinks and other warm colours contrast the hard rock symbolism previously seen. Outfits which assimilate confidance and love for ones self and the way they portray themselves to the world.

Taking away the relavance in being percieved as a gender by replacing it simply with the conceptual implications of objects aka "stuff" in our daily lives, making us who we are and effecting everything we do. The truest reflection of our own identity. The things we surround ourselves with have a lot of significance within our lives not only helping us with actions but also to express ourselves.

This collection is designed by deleveloping the objects that make genderless people happiest into garments.





editorial inspiration



initial collages to spark ideas inspired by new romantic fabric types



asymmetric raised neckline  
pointed shoulder



draped uptip sleeve with no seam



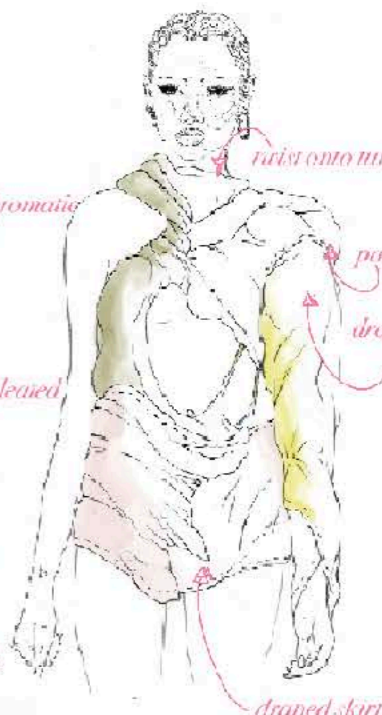
monochromatic look



rais onto neckline

padding

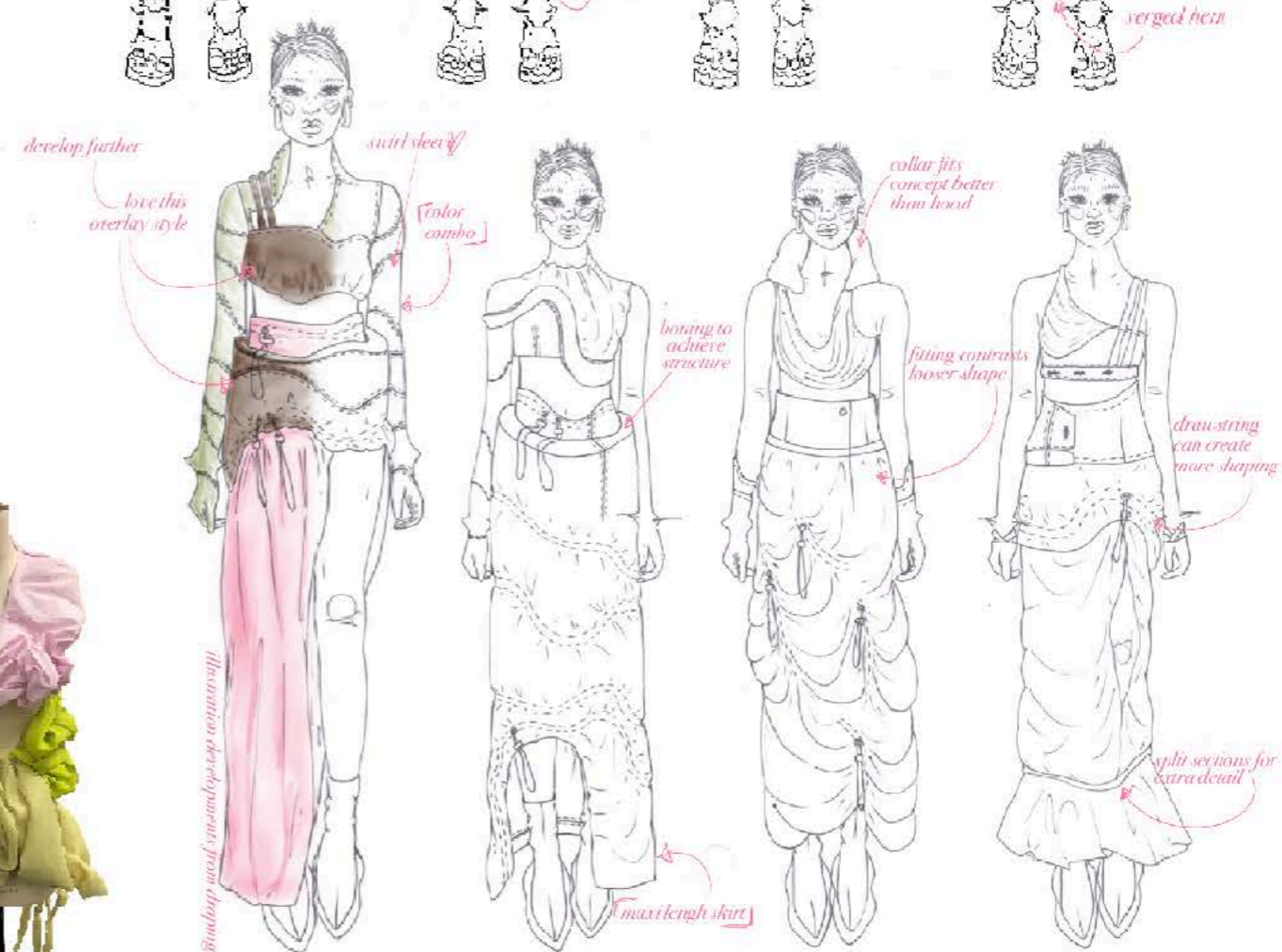
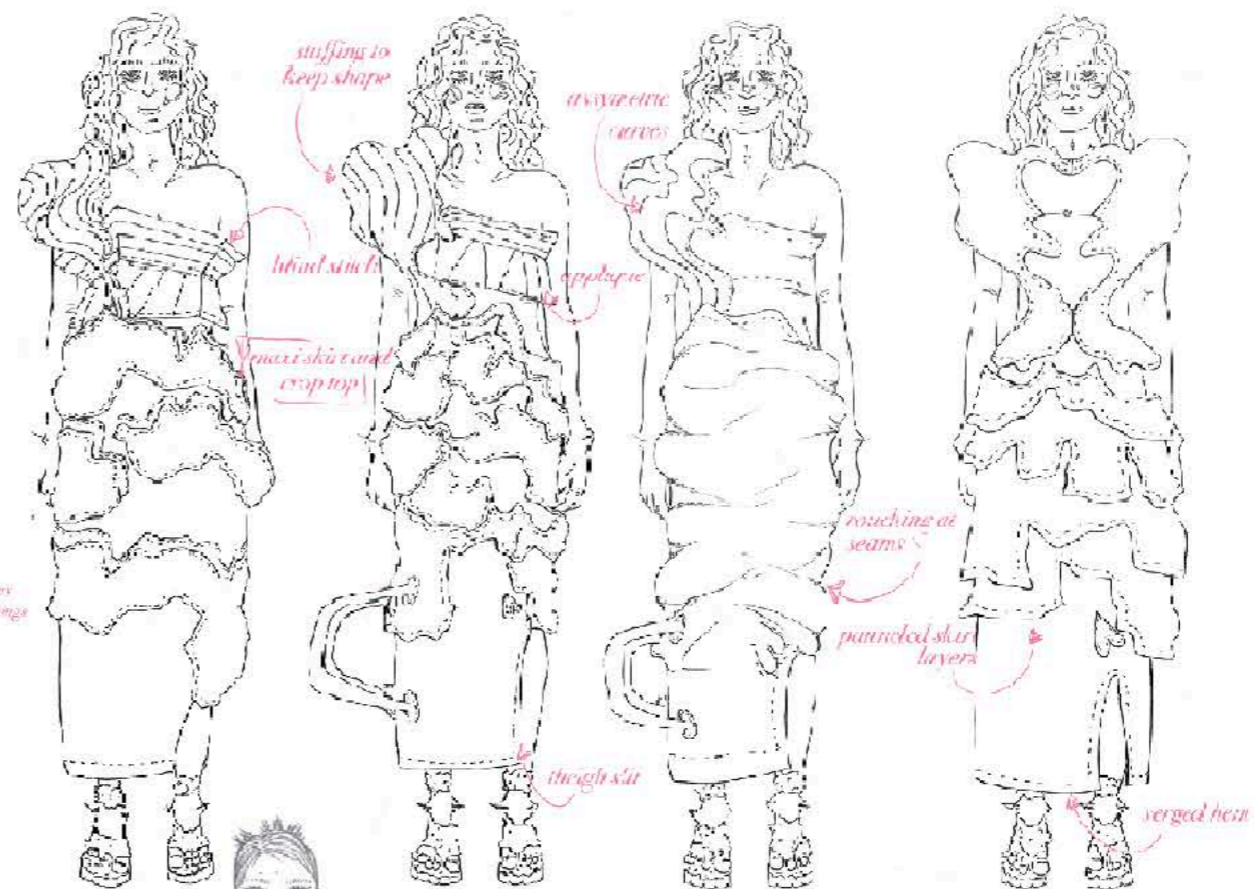
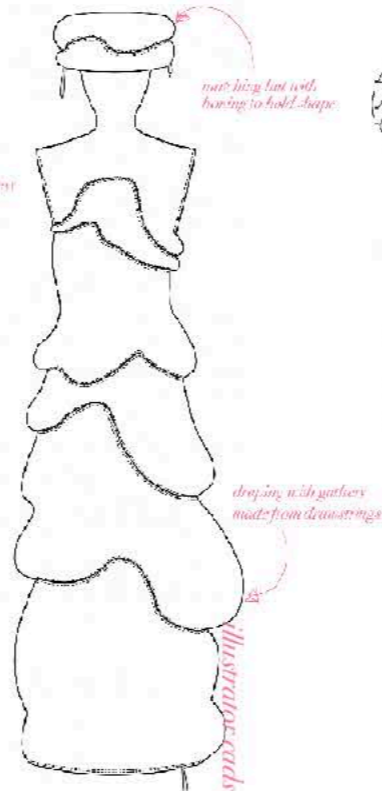
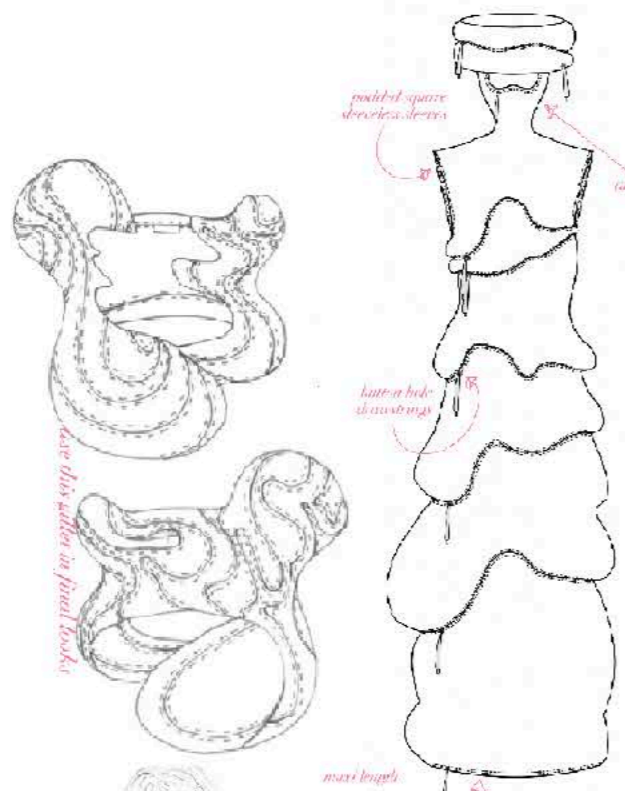
drop skirt



draped skirt



draping inspired by





*monochrome look*

*experimenting with fabric matching*



*gathering at seam sample with chosen fabrics*



*waistband toile to drape skirt onto*



*digital scan over drawing to imagine final look*



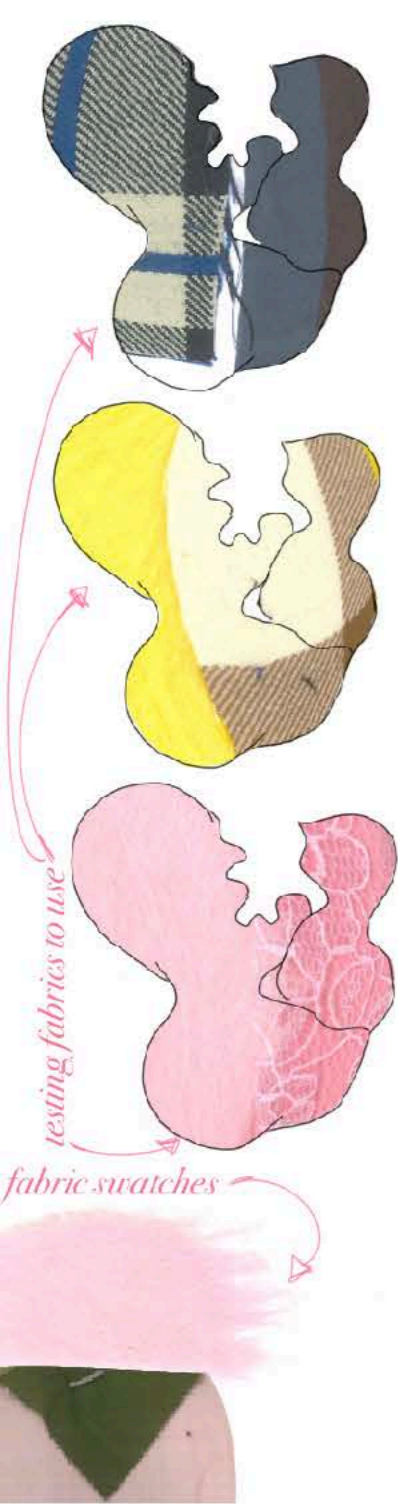
*this hat*

*as wide as shoulders*

*curved waistband*

*rounded shape*

*collaging over digital drawing*



testing fabrics to use

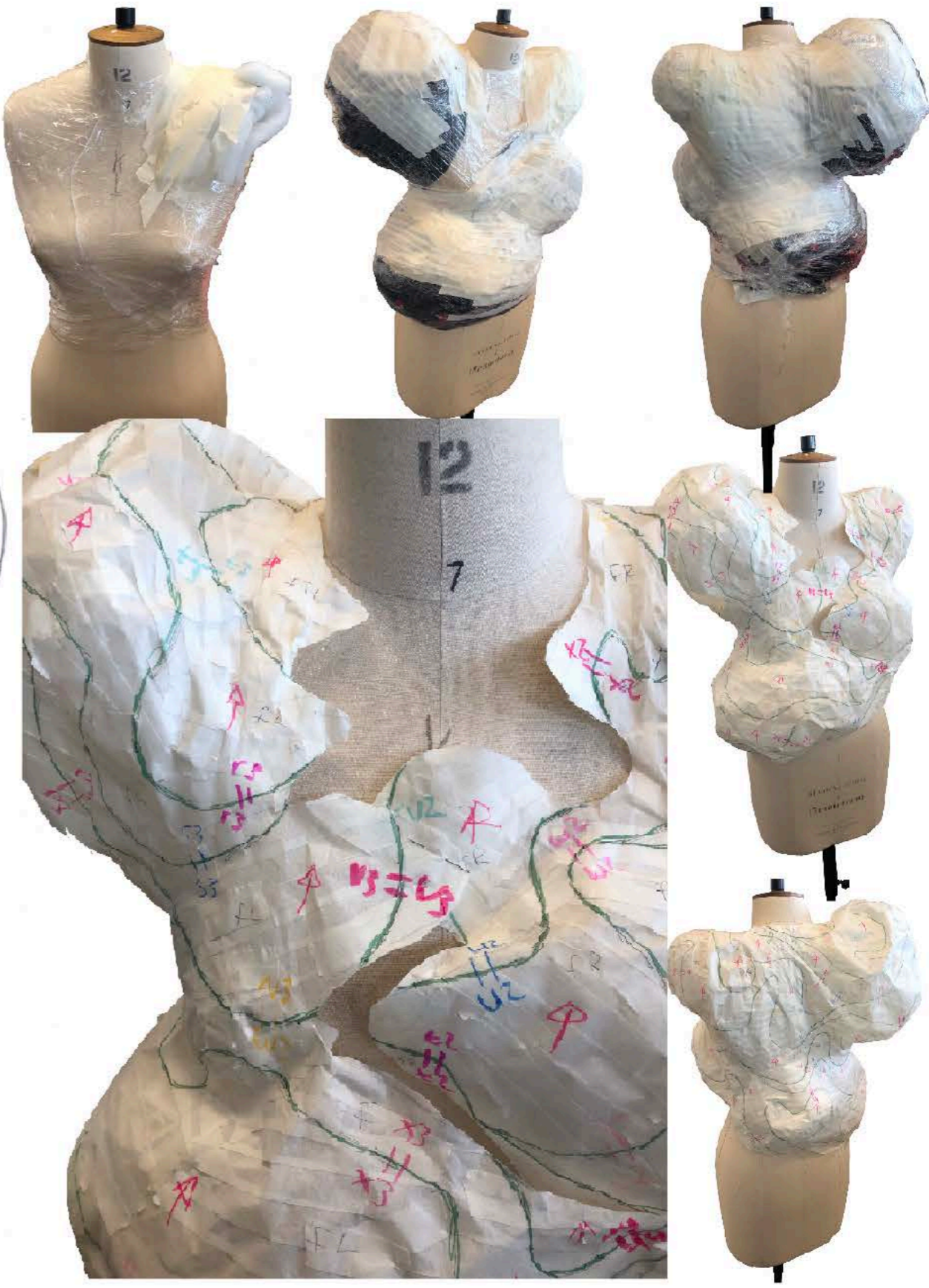
fabric swatches

sample

visualisation of gilet



process of pattern making using cling film and masking tape filled with stuffing to create shape marking pieces and notches



placement and texture  
experimentations



initial idea  
generating collages



droopy layers

love the big  
fullnes of this

digitally ~~drawn~~ search of elements



samples inspired by  
collages



layer inspiration



texture inspiration



swirl inspiration

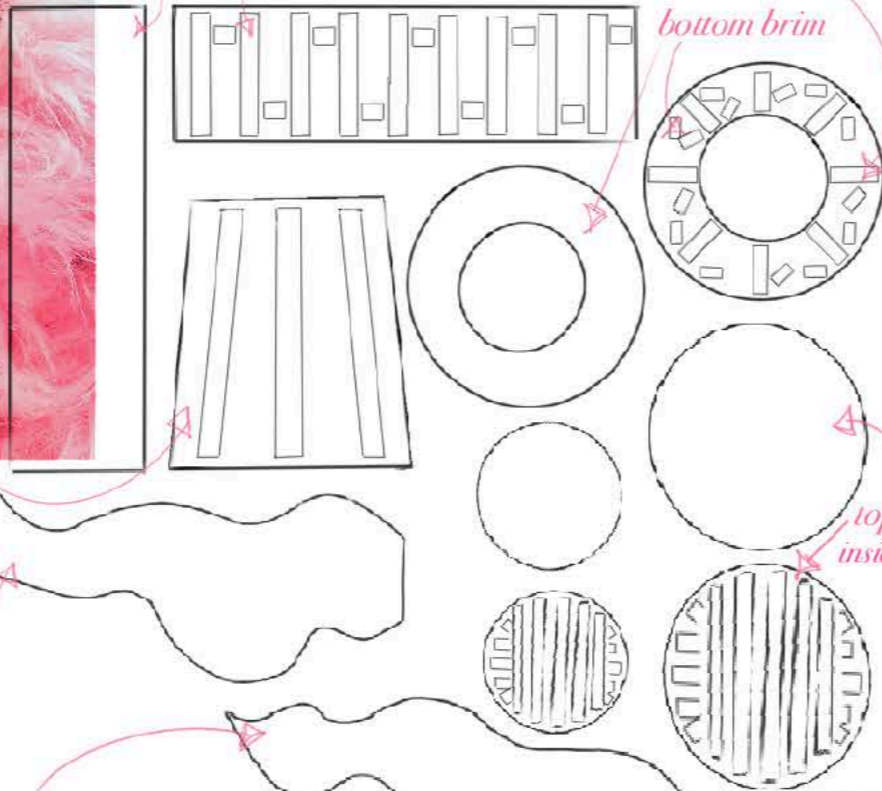
inside boning reference



inside cap

inside sections with boning sewn in

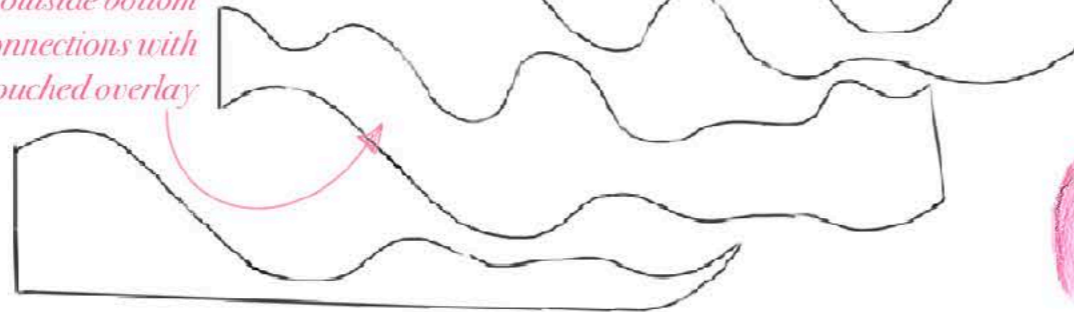
bottom brim



top outside fur

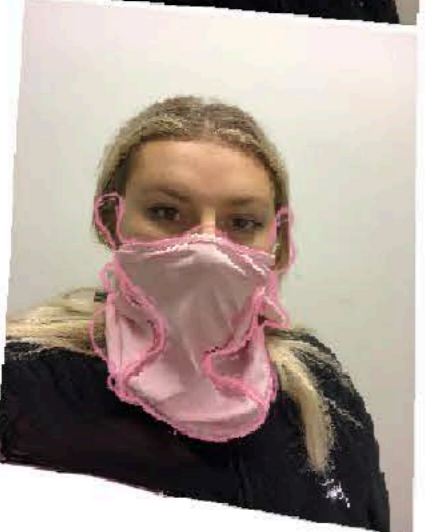
top cross inside cap

outside bottom connections with roused overlay



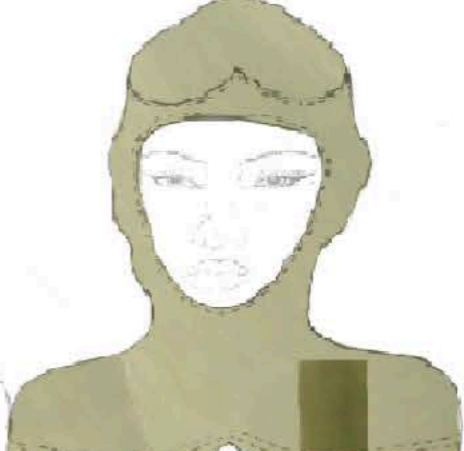


*initial simplistic balaclava mock-up to determine block pattern to develop further*

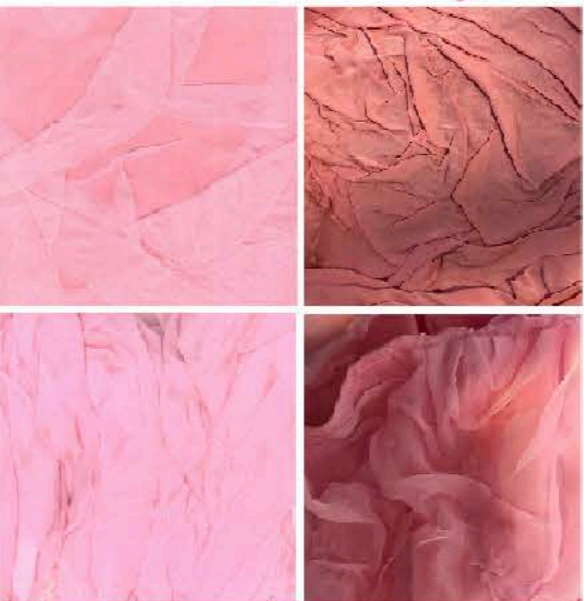


*shape and cut out inspirations*

*experimenting with various balaclava styles and fabrics*

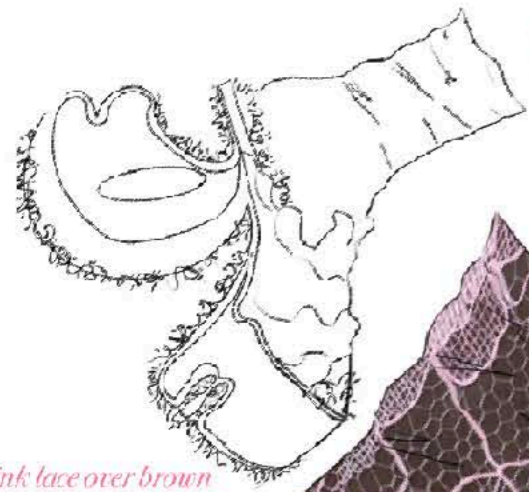


*balaclava attached to top with experimental textures*



*exploring potential textures through generating, bonding, ebbing and digital scan warping*

*asymmetrical pointed  
and square toes*



*fabric collaging over shoes*



*pink lace over brown  
nylon*

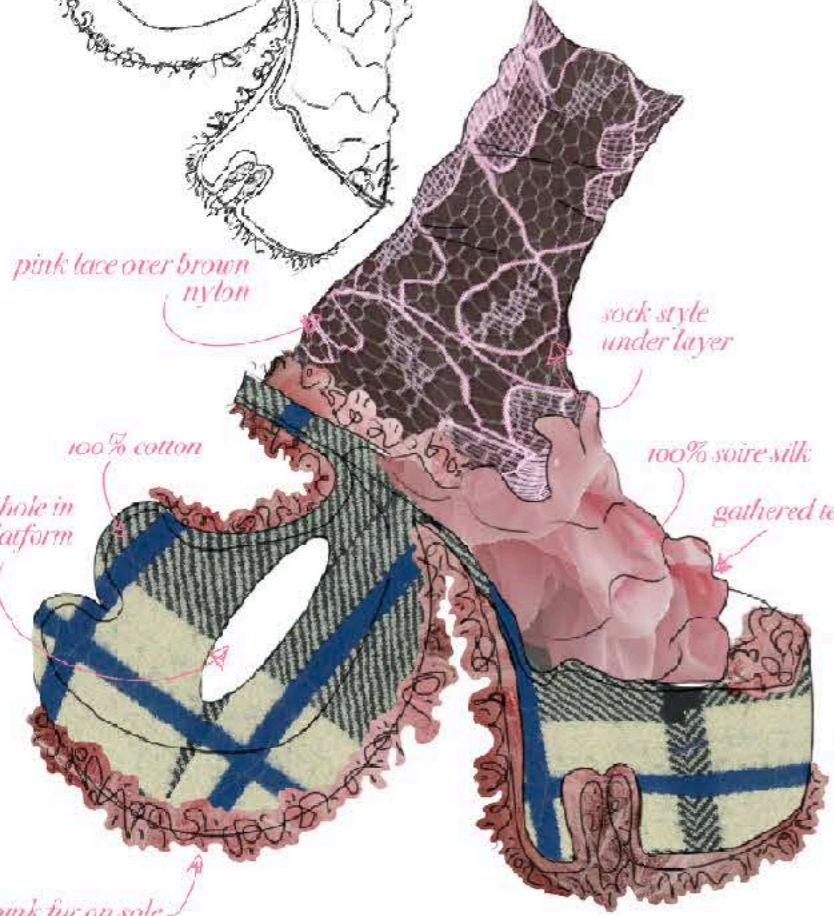
*sock style  
under layer*

*100% cotton*

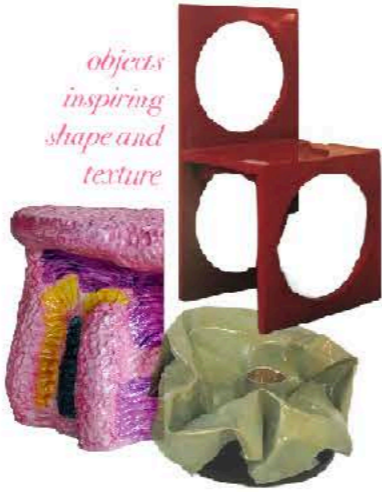
*100% soire silk*

*gathered texture*

*hole in  
platform*



*objects  
inspiring  
shape and  
texture*



*initial designs*



*Euphoric Straps  
S.J. Chapman S/S 2023*



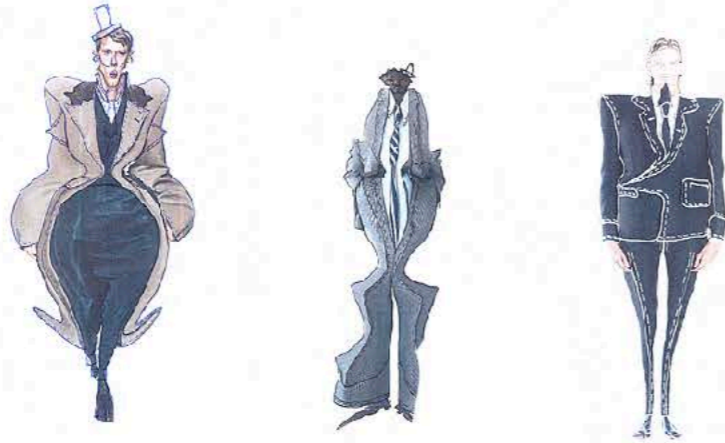
Oversized tailoring  
For the individual

A/W 20/2021 -Wide shoulders  
-Monochrome  
-Focus on details

Housewives  
of wall street

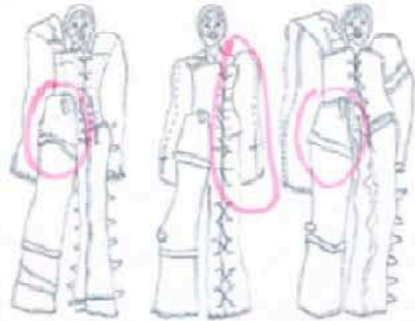
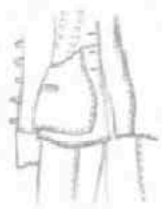
Loverz of  
wall streets  
richest

S.J. CHAPMAN  
DENIM PROJECT  
A/W 2021/2022



Wide shoulders  
power

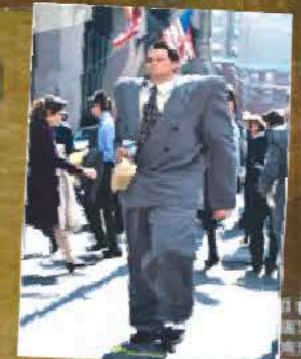
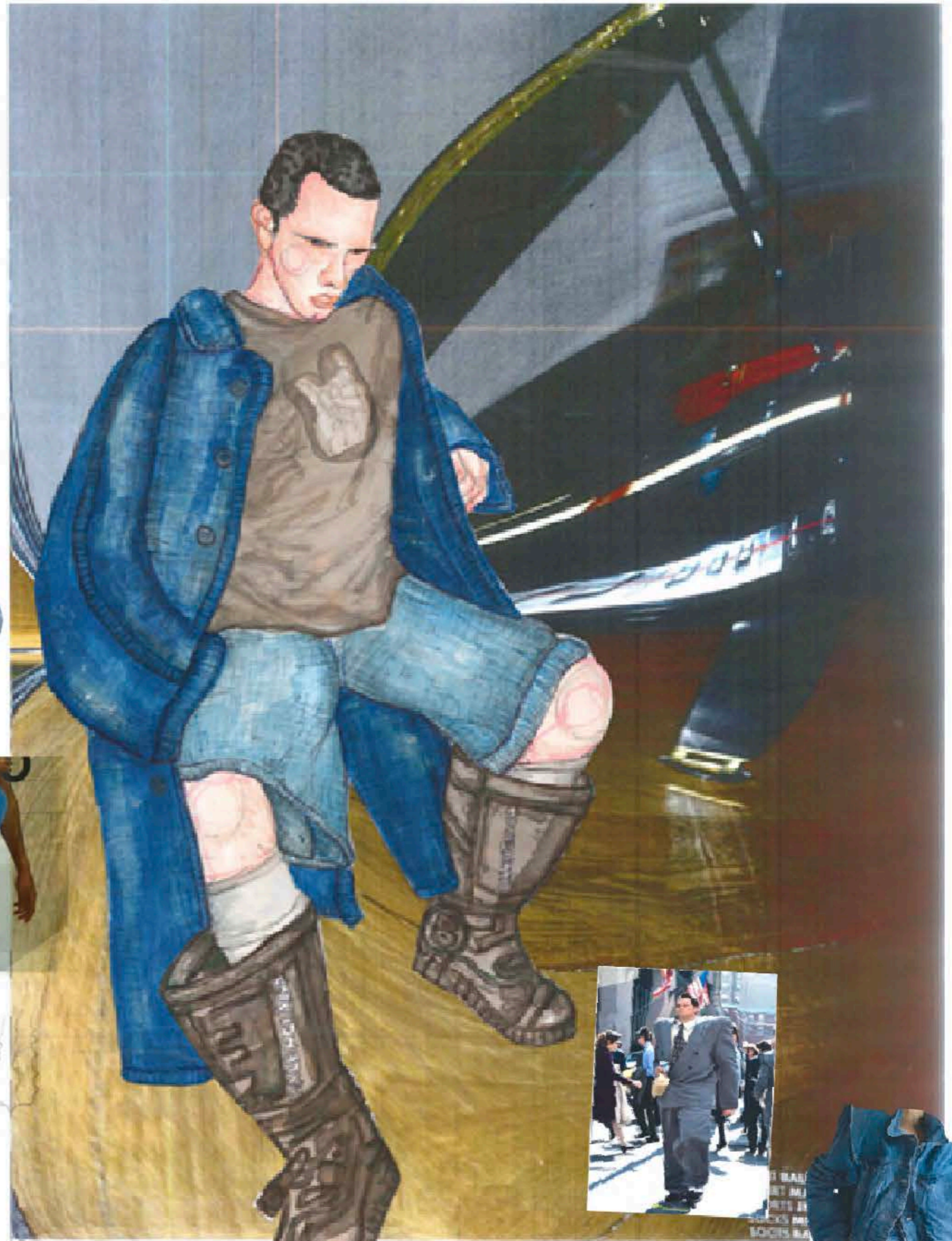
Asymmetrical  
lines



Everdone

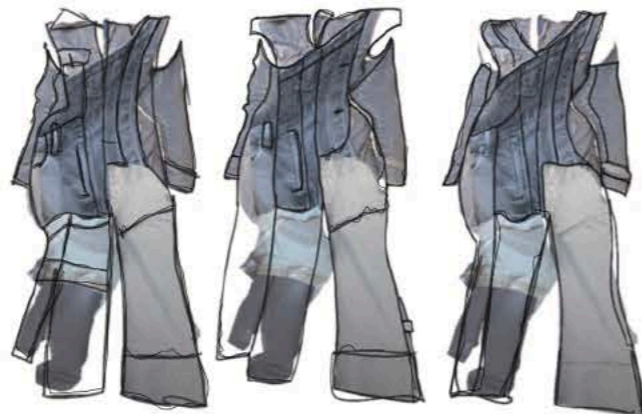
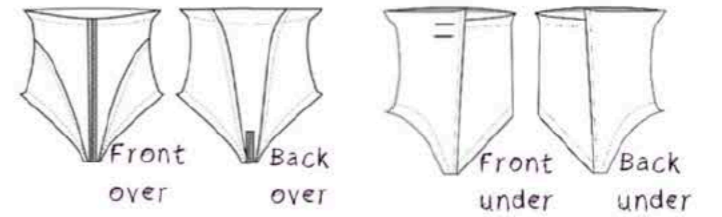
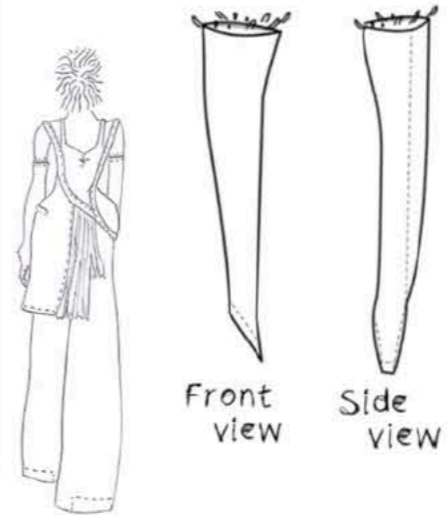


Clean elongated  
seam lines

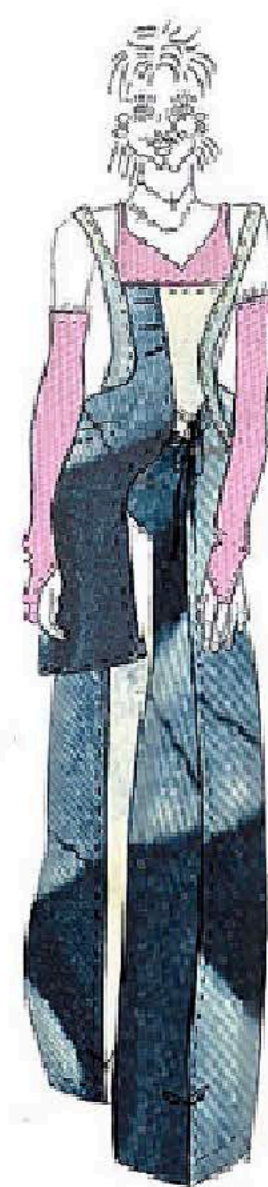
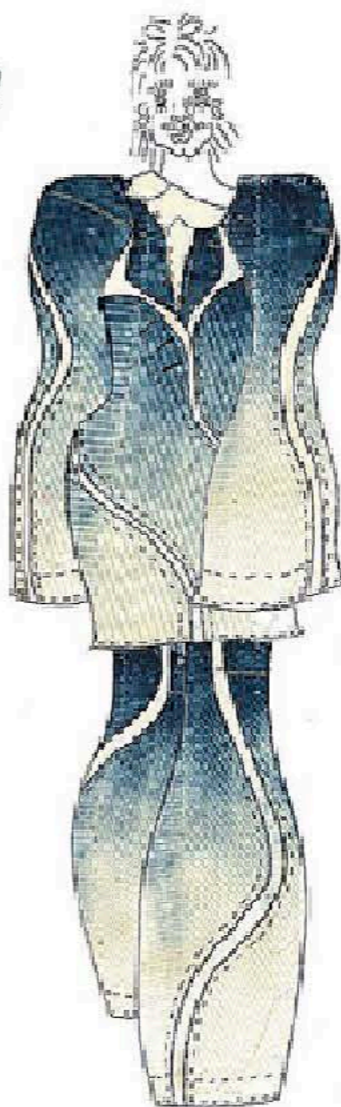


S.J. CHAPMAN  
DENIM PROJECT  
A/W 2021/2022





S.J. CHAPMAN  
DENIM PROJECT  
A/W 2021/2022



S.J. CHAPMAN  
DENIM PROJECT  
A/W 2021/2022



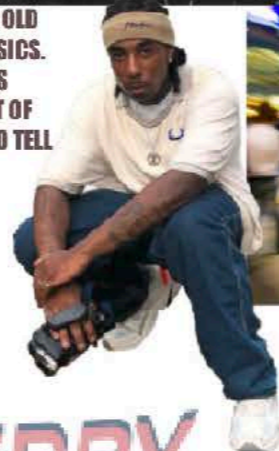
**OUR YOUTH  
OUR CULTURE**  
REMINISCING THE  
BRITISH SUMMERTIME  
OF OUR CHILDHOOD

LET'S  
DON  
BRITISH  
SUMMER  
TODAY



LOVES TO WEAR OLD  
TIMELESS CLASSICS.  
ENJOYS CLOTHES  
THAT HAVE A BIT OF  
CHARACTER AND TELL  
A STORY

CLASSIC  
SILHOUETTES  
TAKE THEM  
FROM WORK  
TO PLAY  
ALWAYS OUT ON THE SCENE SO  
GARMENTS HAVE TO BE VERSITILE  
PREPARED FOR ENGLANDS ERATIC  
WEATHER



PART OF THE ART  
COMMUNITY. WORK HARD  
PLAY HARD. 21 AT HEART.  
20-35

LIVES THEIR LIFE TO  
FULLEST MAKING  
MERORIES IS WHAT  
LIFES ABOUT

**FRED PERRY**  
**S.J. CHAPMAN**



Photo of  
1952 bag  
Builds  
from  
100



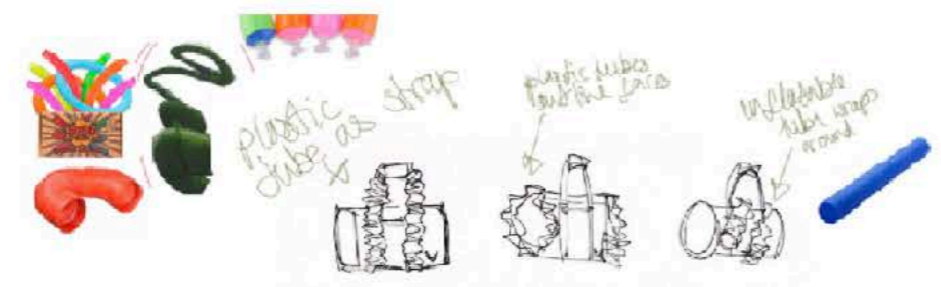
Light orange



1952  
attached by a zip  
vinyl  
Embroidery vinyl



can be worn on or off



plastic tube as strap

plastic tubes for the face

inflatable tube wraps around

blow up pieces  
inflatable  
around a  
control

inflatable straps blow up

inflatable  
castle shape  
pieces  
charging tea  
chuck

hair  
hanging round  
bottom  
use any  
extensions



embroidery removable  
clasp fastened  
padding  
padding on  
hot fix  
glow in  
hot fix  
pearls

embroidery

vinyl  
embroidery  
hot fix  
pearls



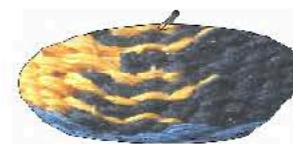


too dull

too tacky

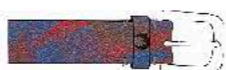


Love colour  
Combo &  
matches  
socks



Print  
looks creepy  
as it is

Love  
the  
colour



too childish

Love the  
simplicity

stitch  
embellish-  
ment

Love these  
colours

ribbed  
felpull  
knitted

embellishment  
would not be  
comfy here

short print?  
- vinyl?  
- in the knit?



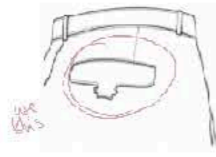
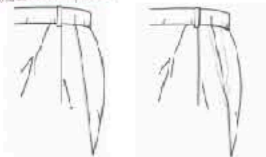
FRED PERRY  
FRED PERRY  
FRED PERRY  
FRED PERRY  
FRED PERRY  
FRED PERRY  
FRED PERRY  
FRED PERRY



↑  
inspo  
↓



✗ waist pockets



welt w/ zipper



fabric samples

Make shoe more wearable  
elastic straps

Change shape of sole

color stripes

new sole structure

new sole structure

new sole structure



deeper around foot for longer wear

bigger toe shoe

deep or 1/2" with 1/2" heel

enlarge back & front diagonally

new sole structure

change pattern of sole



too childish

Love the simplicity &

sketch embellishment

Love these colors

ribbed feltput

knitted

embellishment would not be comfy here

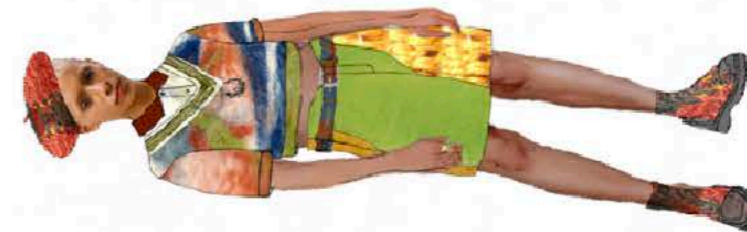
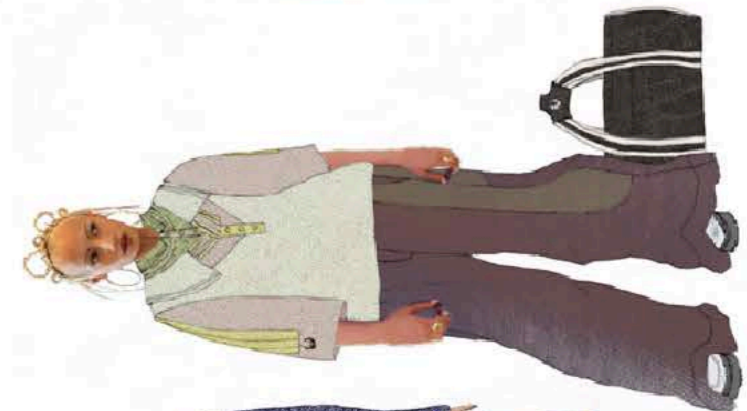
knit print?

vinyl?

in the knit?

FRED PERRY  
FRED PERRY  
FRED PERRY  
FRED PERRY  
FRED PERRY  
FRED PERRY  
FRED PERRY

FRED PERRY  
S.J. CHAPMAN



FRED PERRY  
S.J. CHAPMAN