

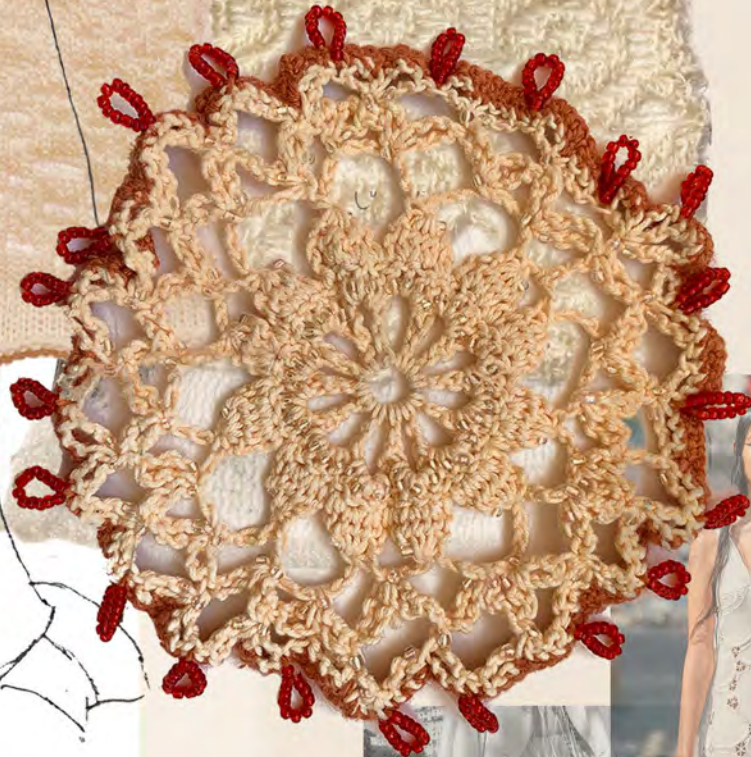


Inis Meain, 1942



Daisy Gray
Daisygray19@gmail.com
07450842177

knitted
overlay
with
beads
in it



Chloe SS22
crochet detailing
combined with
woolens



Tassel
&
fringing - movement &
traditional
elements of
clothing



Holding check on dubbed Fz
and machine.

Hand knit knit
 Aran cable
 sample.

lamb's wool
 Shetland
 and felted in
 2 different
 ways.

mohair
 rib →
 alternating
 colours to
 create
 checker.

mohair +
 acrylic
 brushed out
 to create a
 softer look.



Cashmere yarn
 combined with
 beaded crochet
 technique.

Beading
 with
 crochet →
 lamb's wool &
 glass
 beads.

Eyelets combined with
 crochet → interesting
 way of linking
 seams.

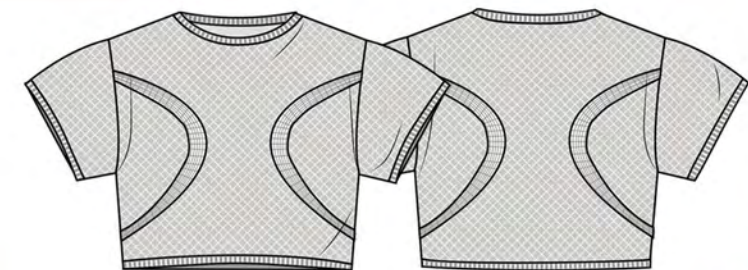




Traditional Dorset buttons - handmade with embroidery thread



Textured knit top - fully fashioned & lined with crochet



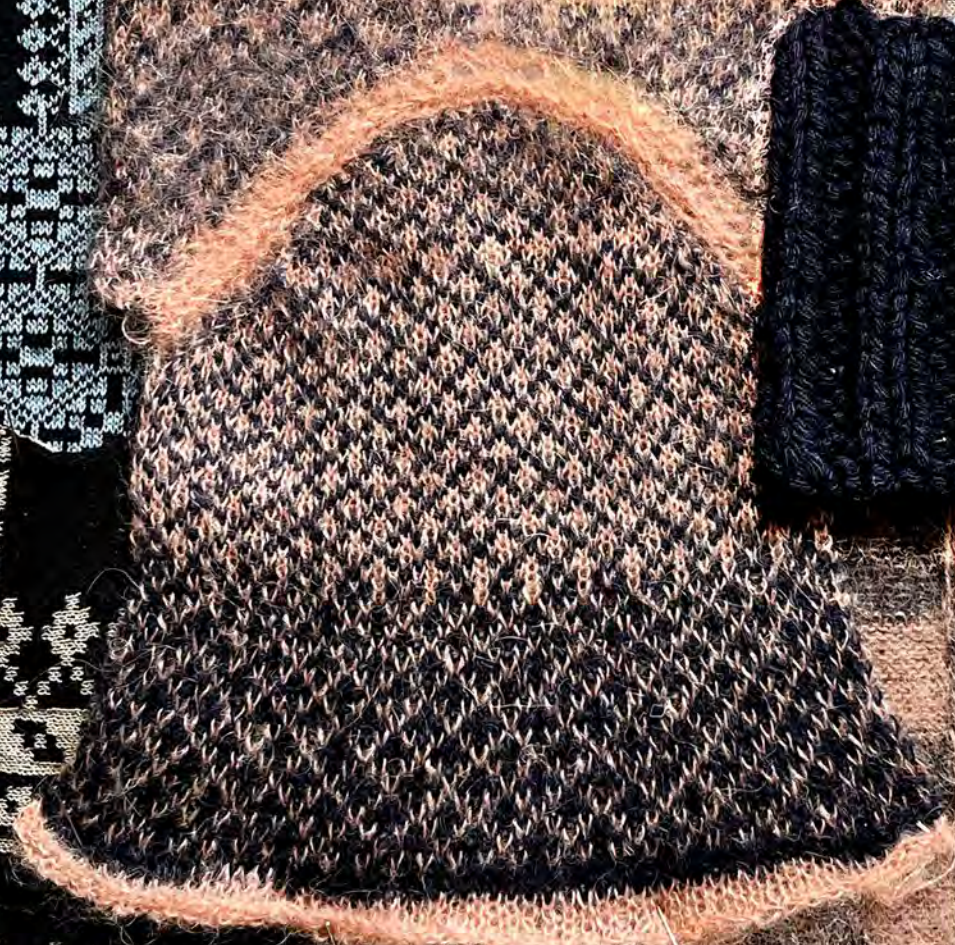
Combining crochet & J knit



float Jacquard → 5.6gg
domestic machine brushed
mohair fully finished +
crochet linked

Cotton and merino blend,
strings of beads woven as
knitted tension 10 on domestic
machine.

10gg Shima knit - Cotton and viscose
yarn - In punchcard
pattern



Tubular jacquard,
reversible → pattern
also on up - Shima knit

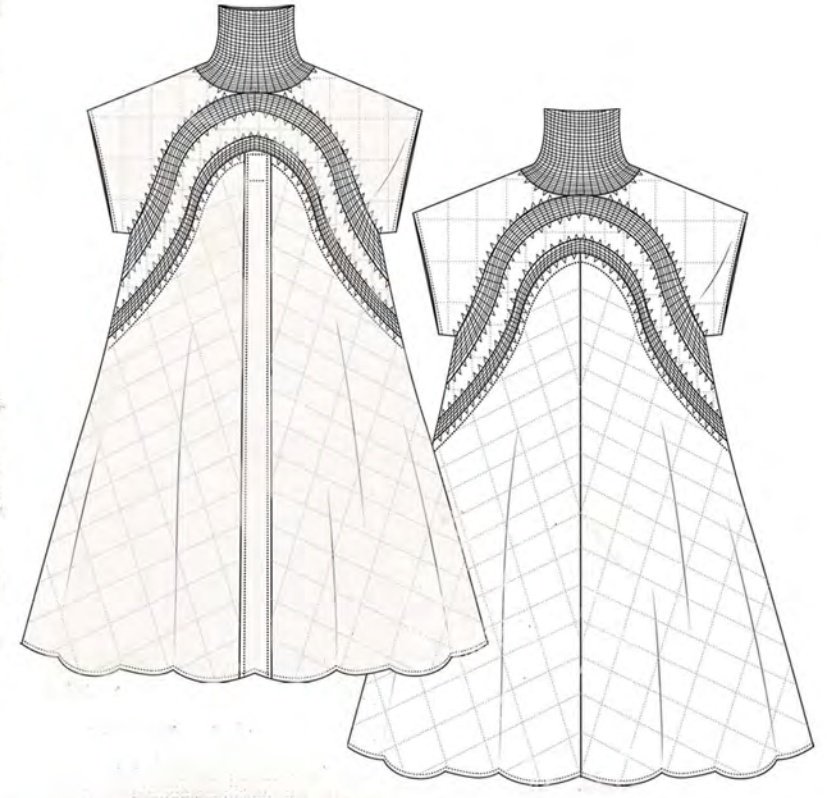
7gg-moh
rib on dubbed - brushed
Alpaca and mohair
alternating checks

knit with crochet - 2.5mm
needles Horn Cable
on domestic 5.6gg created by
transferring stitches of 2

mock
rib
asymmetric
J chey
created by
transferring
stitches
in
different
sequences &
alternating
color

acrylic with
mohair alpaca
blend





Crochet combined with beading -
Cotton & silk yarn.

knit fair isle
created using traditional
Irish folk patterns.

Combining beading
with traditional
crochet.



traditional Aran
Cables

Brushed
out
lamb's
wool ->
shrunken
& felted.

mixing wools and mohair
to create a lacy
texture



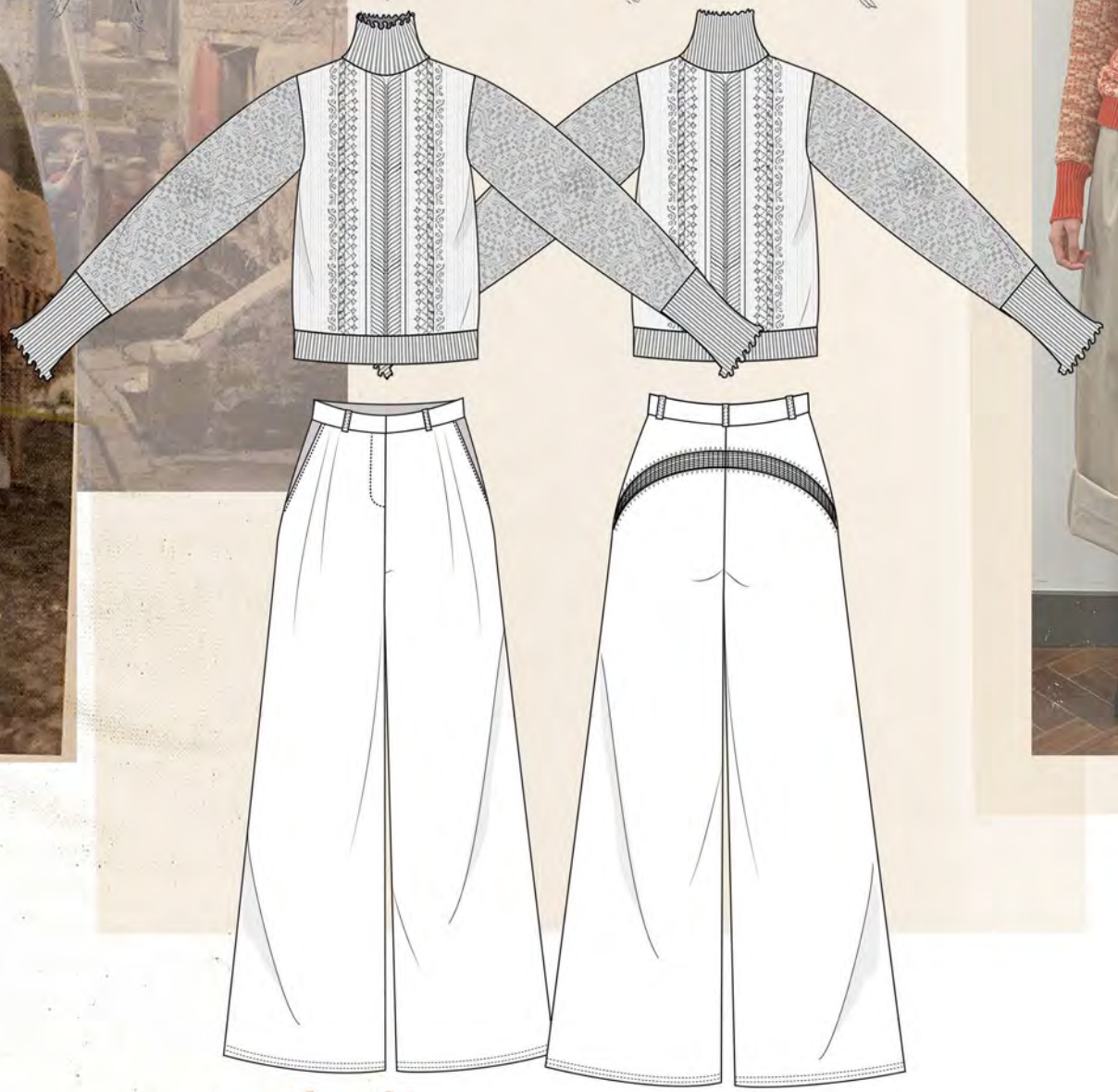


*pocket
bags
shown
under*





- 100% ALPACA
 - 100% LAMBSWOOL
 - 100% ALPACA
 - 100% LAMBSWOOL
 - 50% BABY ALPACA, 25% SILK, 25% CASHMERE



Aran cable on domestic machine -
Mohair Alpaca →
loosest tension.

Crochet
unit →
Celtic symbolism
influence.

monofilament
&
Jambswool →
replicating
lace
structures
in
knitwear.



traditional pattern from an Irish folk
dress and translated into knit.

knitted panels linked
to make a
cable feature.

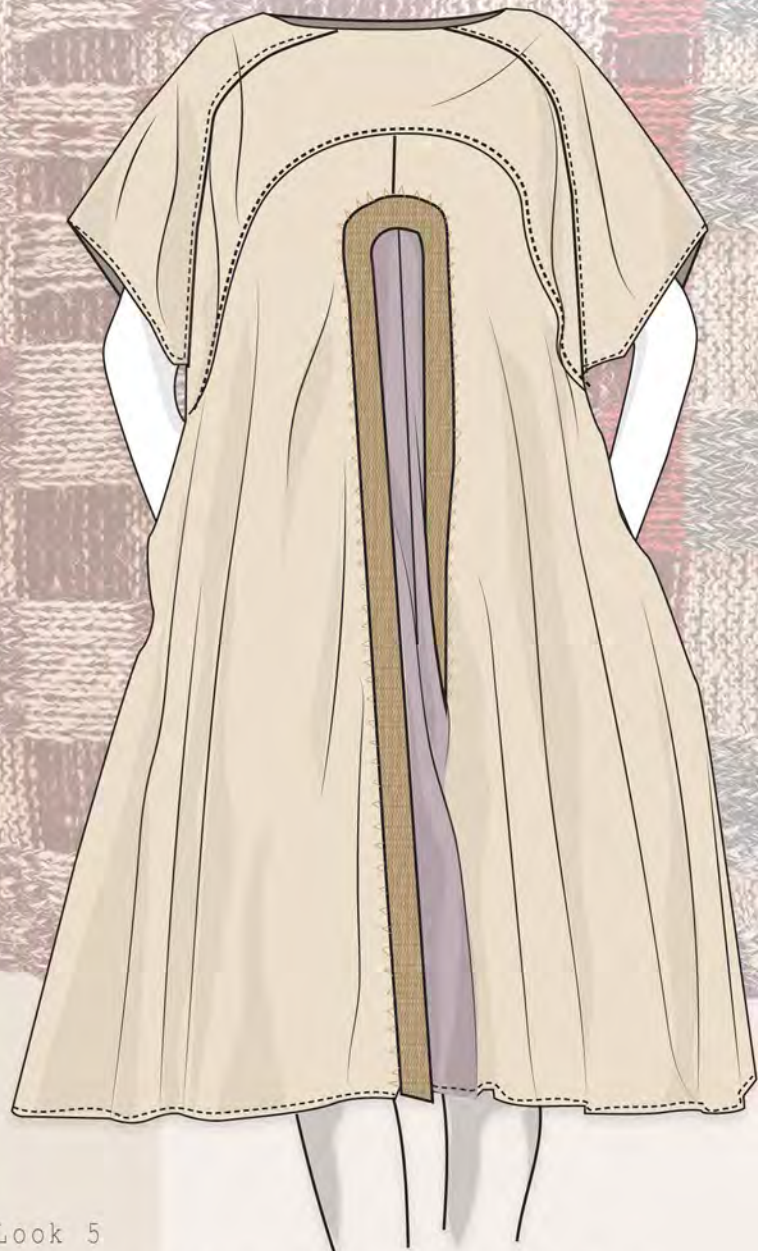
Cotton crochet
Combined with
beading → 5mm
Crochet hook.

Daisy Gray
Daisygray19@gmail.com
07450842177





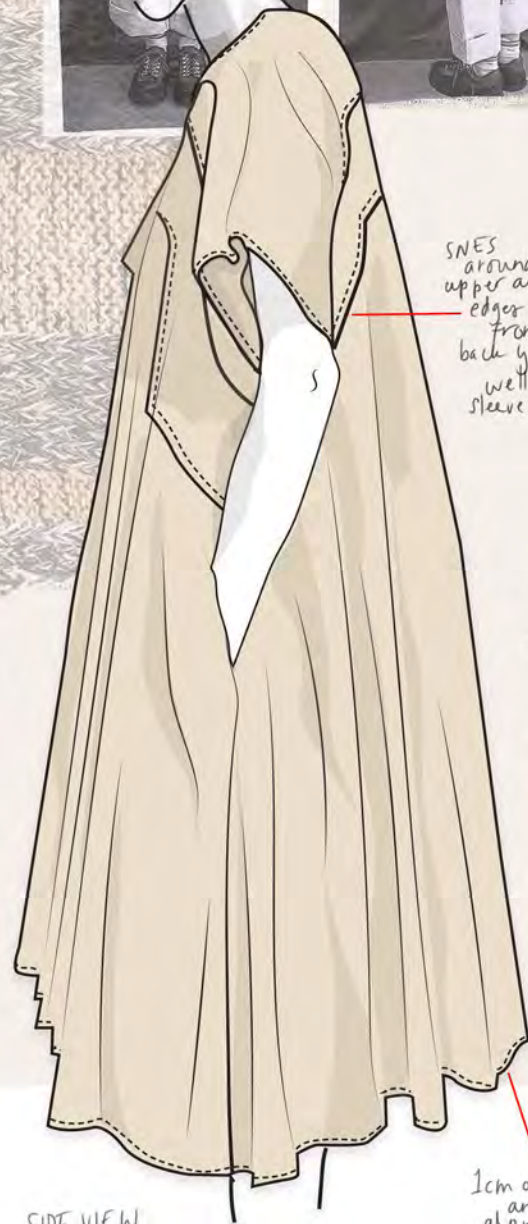
Two layer dress look with
Crochet cut-out top layer



Look 5
Brushed silk mohair knitted cardigan
Wide silk-touch crochet overdress
Wide linen underdress



Dusky pink linen
Silk effect beige cross-grain fabric
pink overlocking thread
beige overlocking thread
100% lambswool
Medium weight light fusing



SIDE VIEW
OVERLAYER

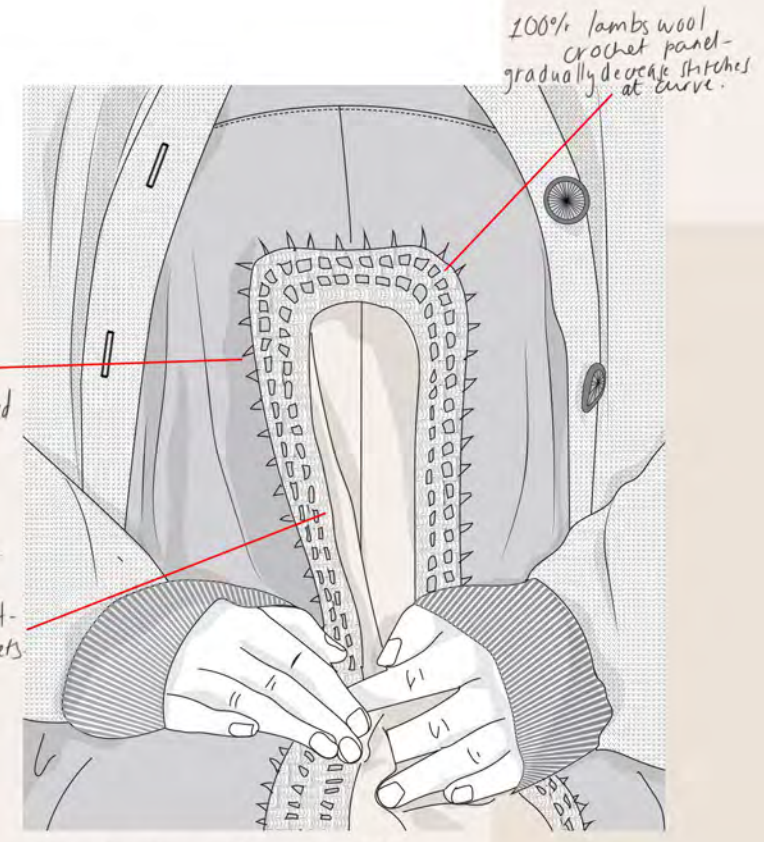
SWS
around
upper and lower
edges of
front and
back yoke as
well as around
sleeve hem.

Inseam
pockets →
4cm down
from
front yoke
panel.

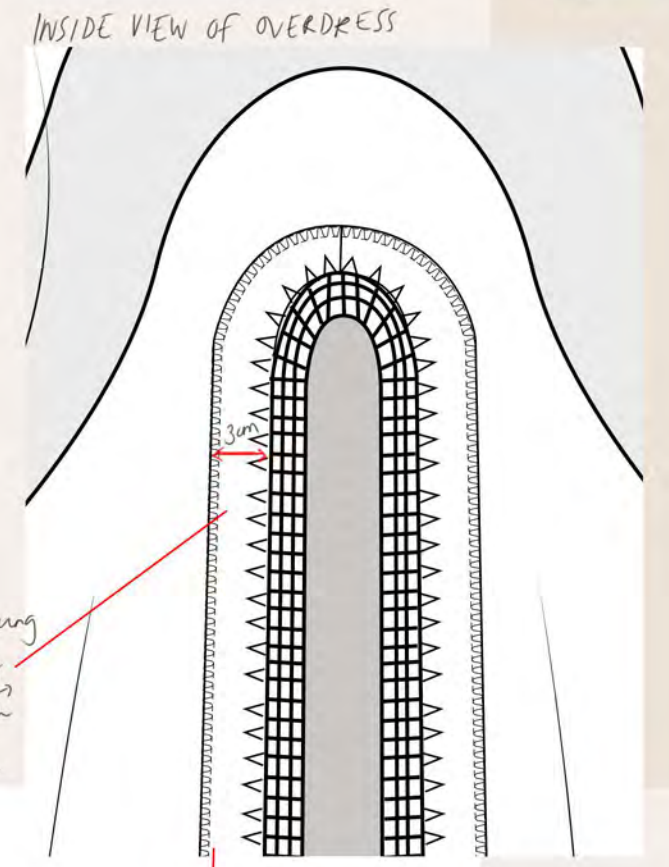
1cm overlapped
and folded up
along hem SWS
in thread DTM.



Holes created
using sewing
awl and then crocheted
into with
4mm crochet hook
Holes measure
1.5cm a part.
A pattern of alternating
double & single crochets



100% lambs wool
crochet panel -
gradually decrease stitches
at curve.



INSIDE VIEW OF OVERDRESS

3cm
facing
on the
inside of
overdress →
Add strength
to hold the
crochet

Facing overlapped
around outer
edge (3 needle),
thread DTM.



100% Deep Blue Mohair
 Silk mohair - Rose
 Silk mohair - Rust
 100% Acrylic in Wine
 Dorset Buttons
 Grosgrain ribbon.
 Deep blue thread.
 Silk effect beige grained fabric

Mock rib mohair blend cardigan with gathered sleeves and detachable collar

knitted sleeve gathered into linker at sleeve head to create volume.

4mm single croch of trim with acrylic yarn - 2 rows

Placket knitted into the panel as the double-bed mock rib - 12 needles wide
 Sew grosgrain ribbon to inside
 40L straight buttonholes sewn in after.

40L Dorset buttons - handmade with embroidery thread

large checked collar → needle bed set up → 8x8 mock rib in acrylic + mohair silk overlaid into shape.

- 8x8 Plated Rose
- 8x8 Plated Rust
- 4x4 Plated Wine
- 4x4 Plated Rose
- 4x4 Plated Blue
- 8x8 Plated Rose
- 4x4 Plated Rust
- 4x4 Plated Wine
- 8x8 main colour change + plated Rose
- 8x8 Plated Blue
- 4x4 Plated Rust
- 4x4 Plated Wine
- 4x4 Plated Rust

Alternating mock rib

CUFF DETAILS

Alternate colours and needle formation to create pattern

4x4 mock rib in the same yarns

2x2 plated rib - silk mohair and acrylic

2 ply plain knit acrylic

Sleeve linked together at cuff due to change in yarn.

Full needle → 8 rows crocheted on beads in between colour change.

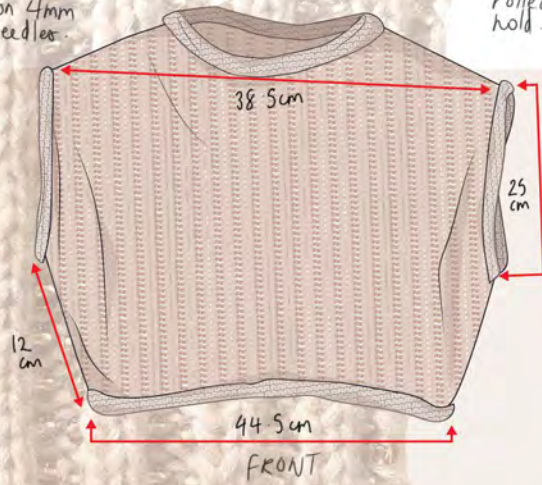
2x2 plated rib - acrylic + blue mohair.



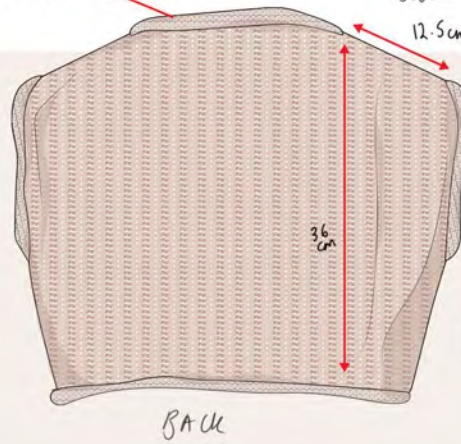
Wide flowing linen shirt with beaded sweater vest and wide pleated washed linen skirt.



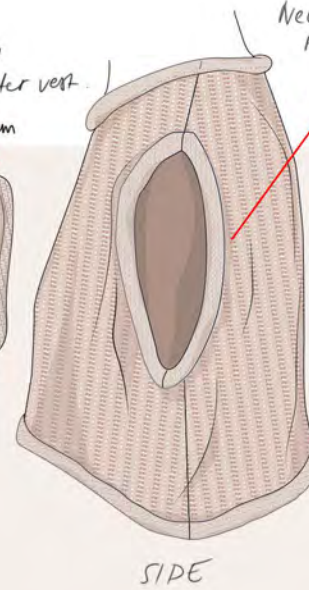
Sweater vest hand knitted in 30% Cotton, 70% Merino on 4mm needles.



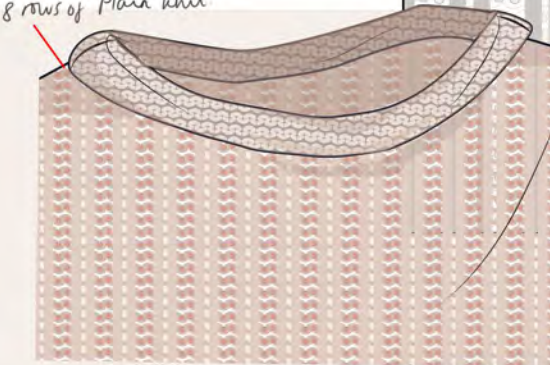
Rolled neckline Plain knit lined + stitched rolled over to hold.



Relaxed & loose fit, boxy shape, cropped sweater vest.



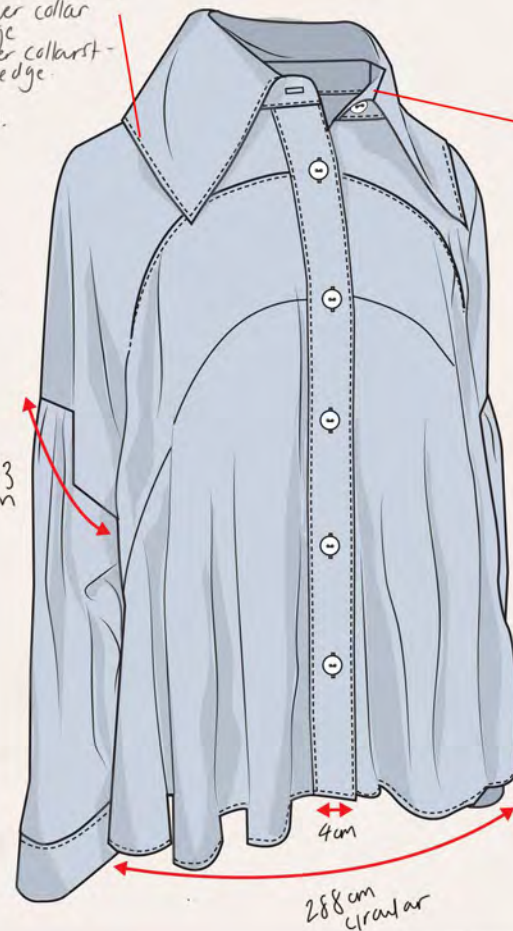
Neckline, Armholes and hem also with rolled edge → 8 rows of Plain knit.



Sweater vest knitted in 2x2 rib. Beads knitted in on every other row on the purl stitches.

Neck edge rolled to show purl side

Collar topstitched along lower collar edge and lower collar stand and edge. Thread DTM.



High neck-wide collar secured on collar stand with 22L button.

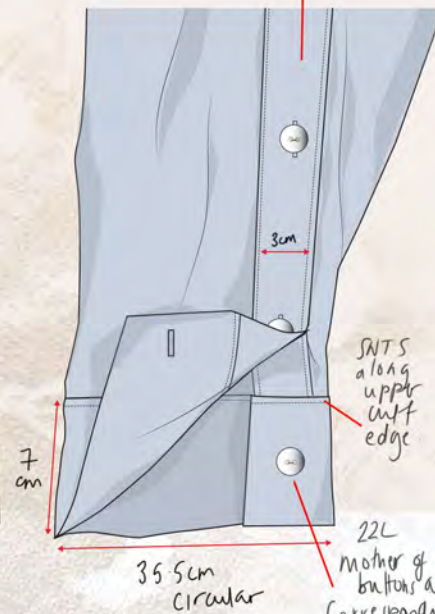
Blue herringbone washed linen fabric

SNES along upper yoke edge



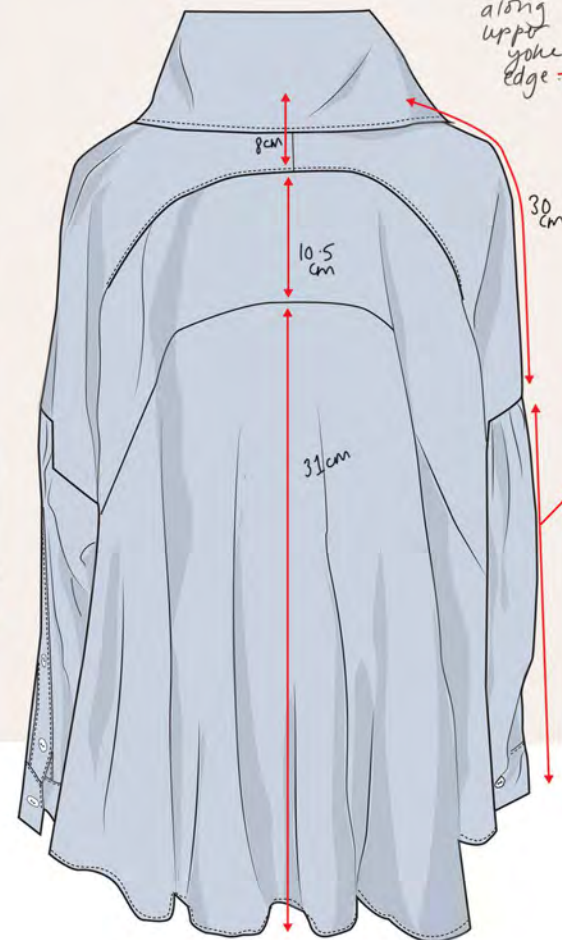
26L Mother of pearl buttons centre of the shirt placket

3cm sleeve plaquets down entirety of the sleeve at centre of sleevehead. SNES along both plaquet edges.



SNES along upper cuff edge

22L Mother of pearl buttons and corresponding straight buttonholes → thread DTM.



Two-panel gathered sleeve to create voluminous silhouette



FULL COLLAR VIEW

Look 6
Beaded Merino and cotton sweater vest
Blue herringbone linen shirt
Wide washed linen pleated skirt



Long draped pleated skirt
with side plackets
and slits on the SS.

Blue/grey washed linen cross
grain fabric
Deep blue topstitching thread
Deep blue over locking thread
Deep blue cotton thread
Dorset buttons
medium weight fusing

Back + front
panels are
the same
+/- 4cm
for side
plackets

BACK VIEW

skirt
fastened on both
sides with
Dorset buttons
The whole
way up SS

straight opening
pockets hidden
in seam along
placket edge
16cm deep

pocket
bags
enclosed in
plackets and
waistband.
overloading of inside
of waistband
and understitching down

panel hidden behind plackets & pocket
bags to accommodate for max
fabric width

Understitching on
skirt waistband.

10cm, 10.5cm
and 20cm
deep pleats
to create
fullness

side plackets open
completely to allow
more fullness and
movement

SNTS Along
both sides of placket
Thread DTM.

11.5cm

87
cm

40L Dorset
button hand made
with embroidery thread
with corresponding
straight buttonhole

50
cm

3cm double folded hem-
SNTS in thread DTM
main fabric.

4cm

3cm

