

KIERAN RODERICK AW23

- KRAW23 EXPLORES THE PHYSICAL RESPONSE TO THE ANXIETY OF THE UNCERTAINTY IN THE 2020S, WITH A SYSTEM ERUPTING BEFORE US, POSITIONING A FUTURE IN A SYSTEM FALLING APART SEEMS TO BE THE MOST DAUNTING TASK OF GEN Z AND YOUNG PEOPLE TO DATE. IN 2022 WE SAW HOW FRAGILE AND MOULDED THE SYSTEM OF SOCIETY IS AROUND US AND OVERNIGHT OUR LIVES CAN CHANGE, AND AS 2023 BEGINS, DISRUPTION AND RESISTANCE BY THE PEOPLE CONTINUES AGAINST POLITICAL AND CORPORATE CORRUPTION. IN AW23 ANXIETY AND UNCERTAINTY IS CONFRONTED, THROUGH STRUCTURE. SILHOUETTES ARE SCULPTED, THEY'RE STRONG, WITH REMINANTS OF FRAGILITY IN THEIR DRAPE, SURREALISM IS CREATED IN CLOTHING; EVERYTHING IS DISRUPTED, NOTHING CAN BE LEFT IN ITS ORIGINAL FORM.



No. 2 — Height 21

ANTONIO
KLEFF

KIERAN RODERICK
AW 23
SCULPTED FRAGILITY

minimalist compositionally interesting as the body is
 simplified shapes created by the Canadian-born
 sculptor Ronald Bladen, for example, clearly show
 his connection with the art of Tony Smith, but
 essentially his pieces such as *Eniko I* and *Soma
 Sutra* are sculptural statements of a more tradi-
 tional type.



KICKAW ZODERICK
 AN 23
 SCULPTED FRAGILITY

LOOK 2, 2ND DRAFT TOP, LYCRA DRAFT TOP.



Seams controlling drape.

7 1/2" GGGED out.

invisible zip in shoulder seam.



TOP INITIAL DRAFT EXPERIMENT



sketch with out of back! Sun

LOOK 2, DRAFT TOP, DRAFTING PATTERN FROM DRAPE

Drape 7 1/2" GGGED out.



KICKAW ZODERICK
Am 23
SCULPTED FRAGILITY



look 2 - TOILE OUVRE

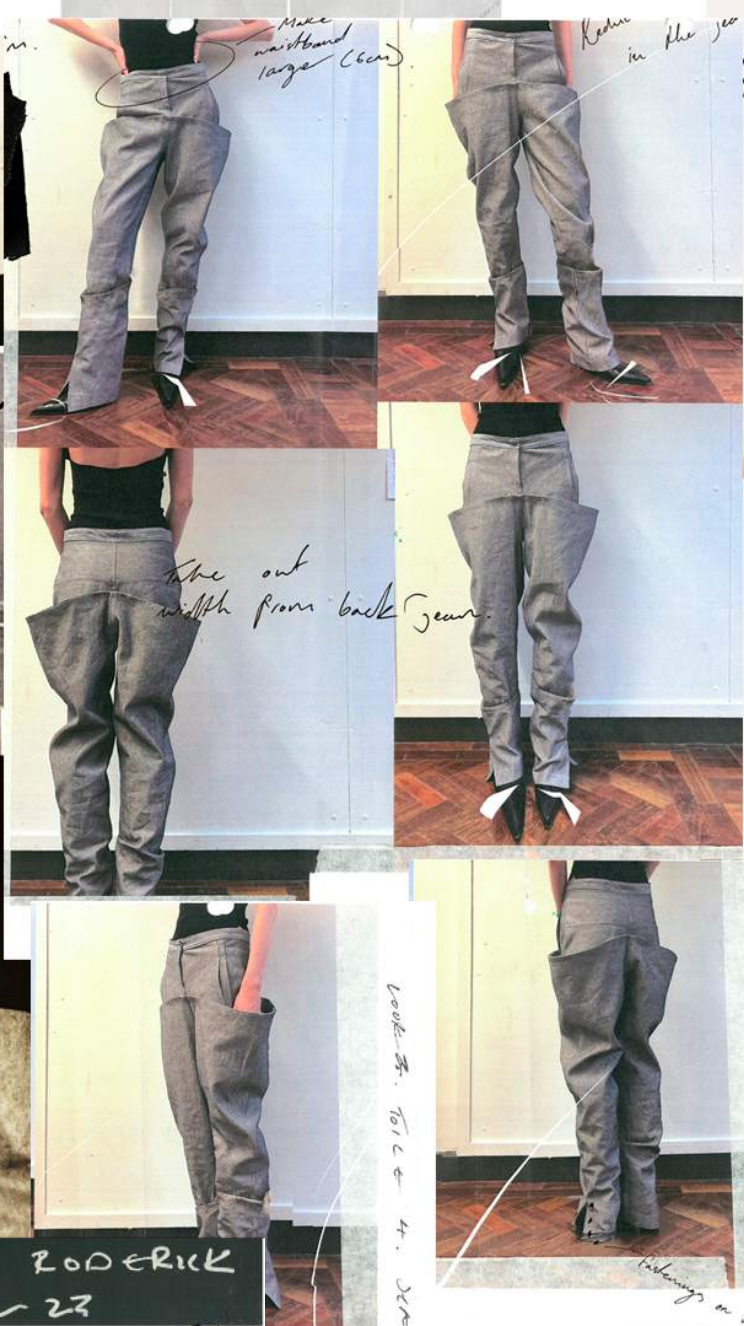
Top & Chaps. Tailor

raise vent height by 2cm.

Create more shaping in trouser leg

add vent in side of pant.

FABRIC OPTIONS: BRN, BLACK, SILVER DENIM



Make waistband large (6cm)

Reduce in the seat

take out width from back seam.

look 2. TOILE OUVRE

SELECTED COLOUR WAY:



add vents

Redesign in seat opening

KIERAN RODRICK AN 23

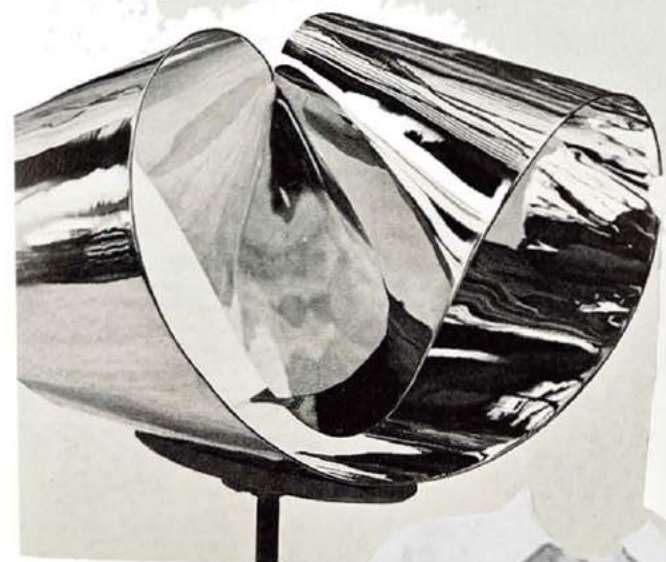
SCULPTED FRAGILITY



LOOK 3.
SHIRT
+ SK



Handwritten notes: "Draped point by Zara", "Draped by Zara", "Clongate shirt".

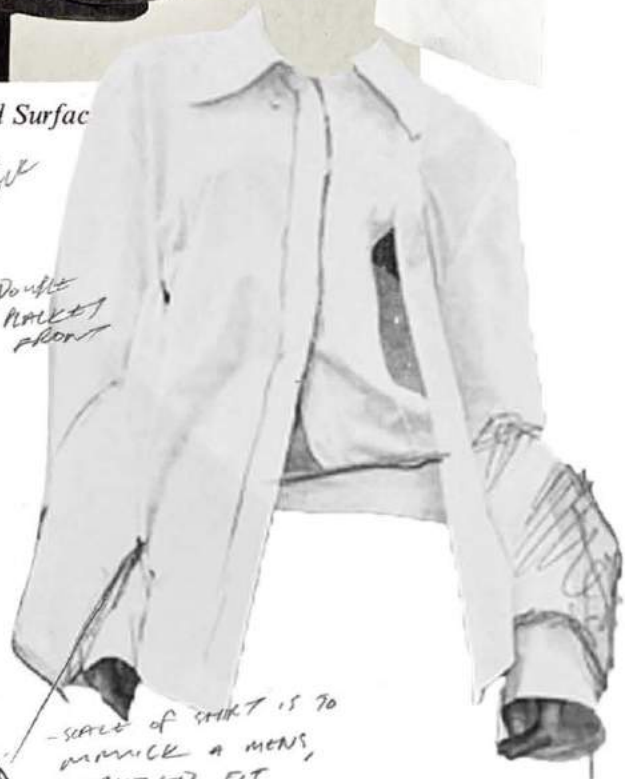


Handwritten note: "COTTON WHITE cotton - SHIRTING (ITALY)"

x Bill, Monoangulated Surface



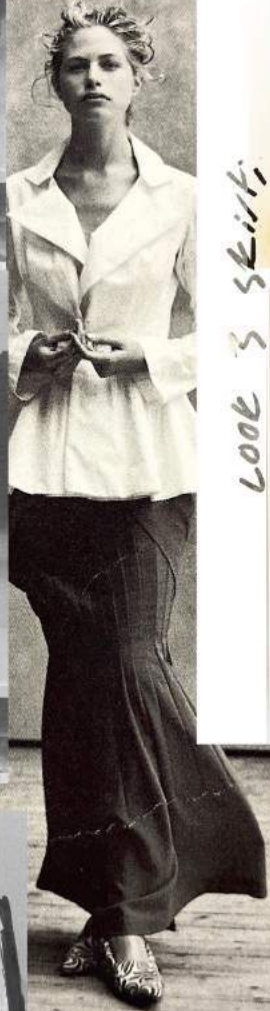
Handwritten notes: "Double pocket front", "UNDER NOSE".



Handwritten notes: "SCALE OF SHIRT IS TO MIMICK A MENS, OVERSIZED FIT", "DOUBLE LARGE WAFFS MIMICK A THIS LARGE SCARF".

KICKAW RODERICK
AW 23

SCULPTED



look 3 skirt



front

Reduced frontal drape to reveal pleats more clearly

back



sides

Look 3. Front & Back



Black/dark underlay instead?

Drape piece below lower waist

Keep heavy

Grey CASHMERE IN SKIRT



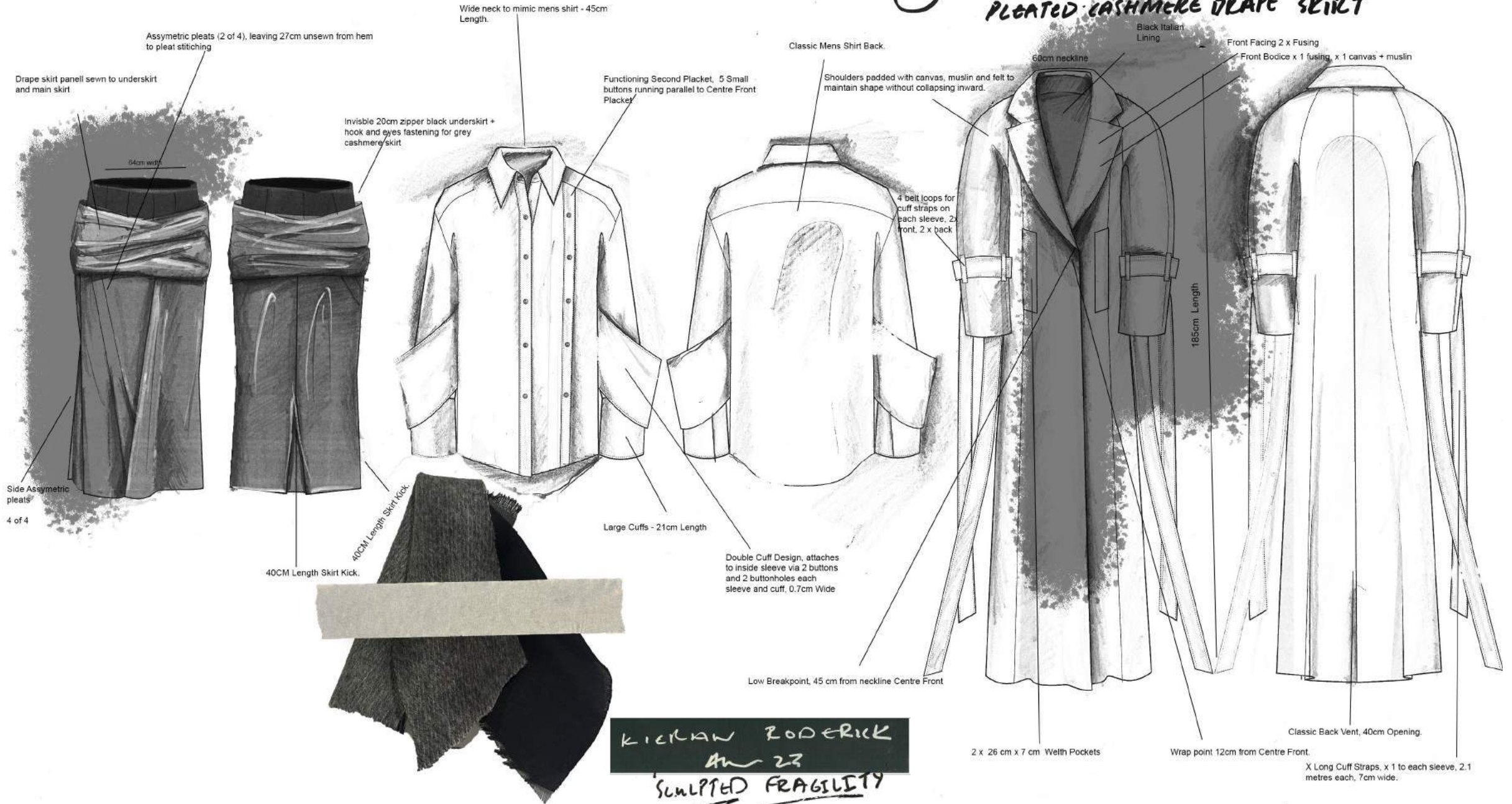
Remove side seam.

Make more space between pleats 15cm

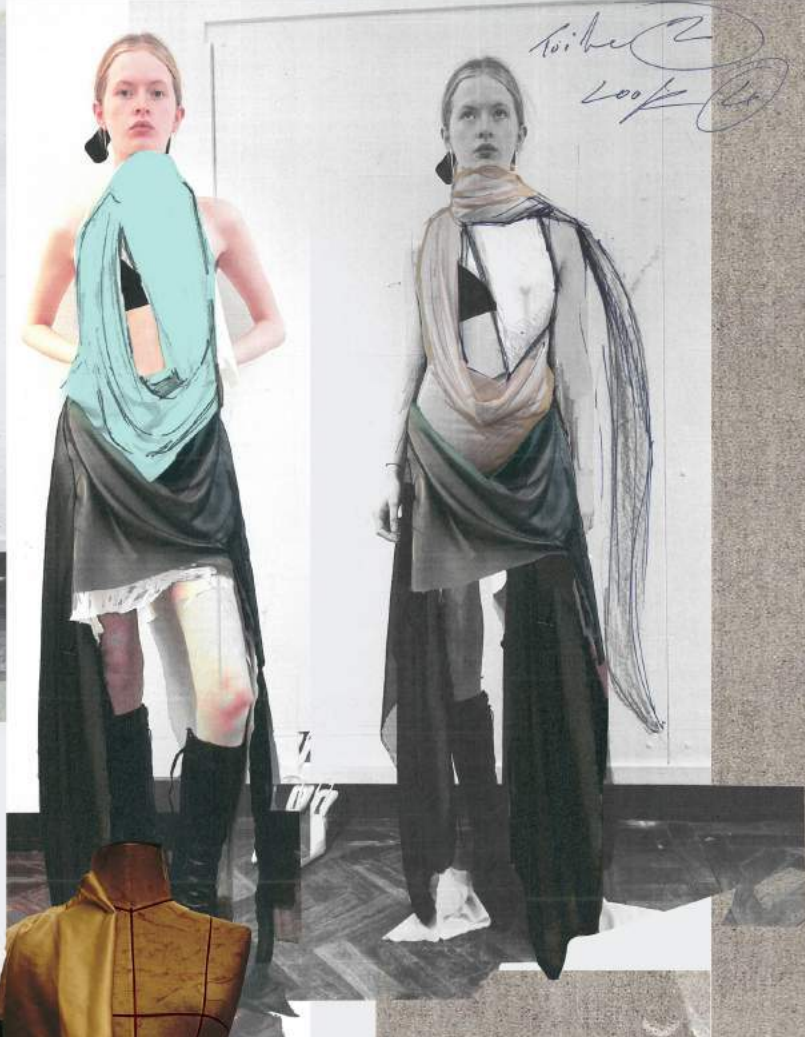


KICKAW ZODERICK
AW 23
WIPED FRAGILITY

LOOK 3. CASHMERE WOOL TRENCH WHITE SHIRT PLEATED CASHMERE DRAPE SKIRT



KICKAW ZODERICK
AW 23
SCULPTED FRAGILITY

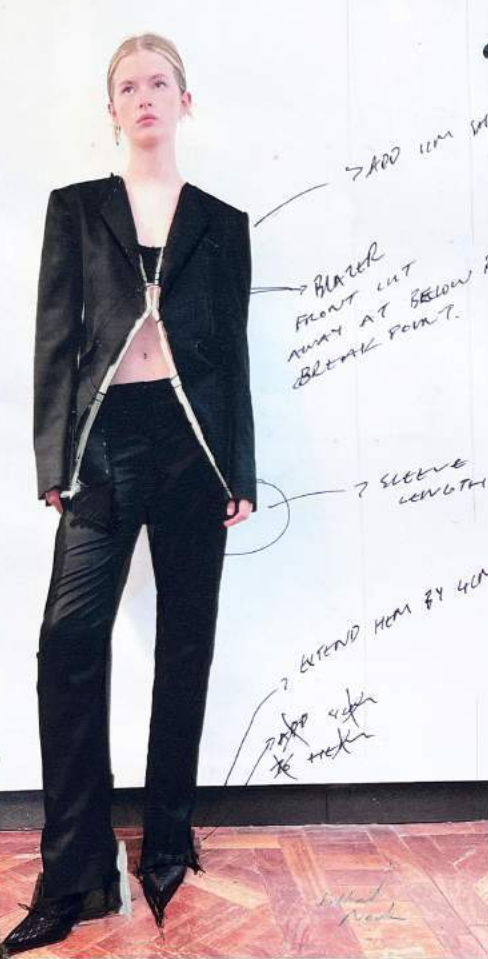


Kieran
Look 4



KIERAN RODRICK
AW 23
SCULPTED FRAGILITY





LOOK 6

ADD 100mm shoulder roll
BLAZER FRONT CUT AWAY AT BELOW BUST BLEND POINT.
SLEEVE LENGTH
EXTEND HEM BY 40M.
ADD WITH THE TUCK



TAKE UP B+6M

JACKET DEVELOPMENT



TAKE UP B+6M



GOOD SHOULDER LINE BUT NEEDS MORE STRUCTURE IN FRONT.

ITALIAN WOOL SUITING
MOLISE-WINE CROQUIS



ALIGHT FROM CENTRE WING POINT.
LOOK 6 PUA



KICKAW ZODERICK
AN 23
SCULPTED FRAGILITY



KICKAW RODERICK
Am 23
SCULPTED FRAGILITY



KIERAN RODERICK AW 23

KIERAN RODERICK
AW 23
SCULPTED FRAGILITY