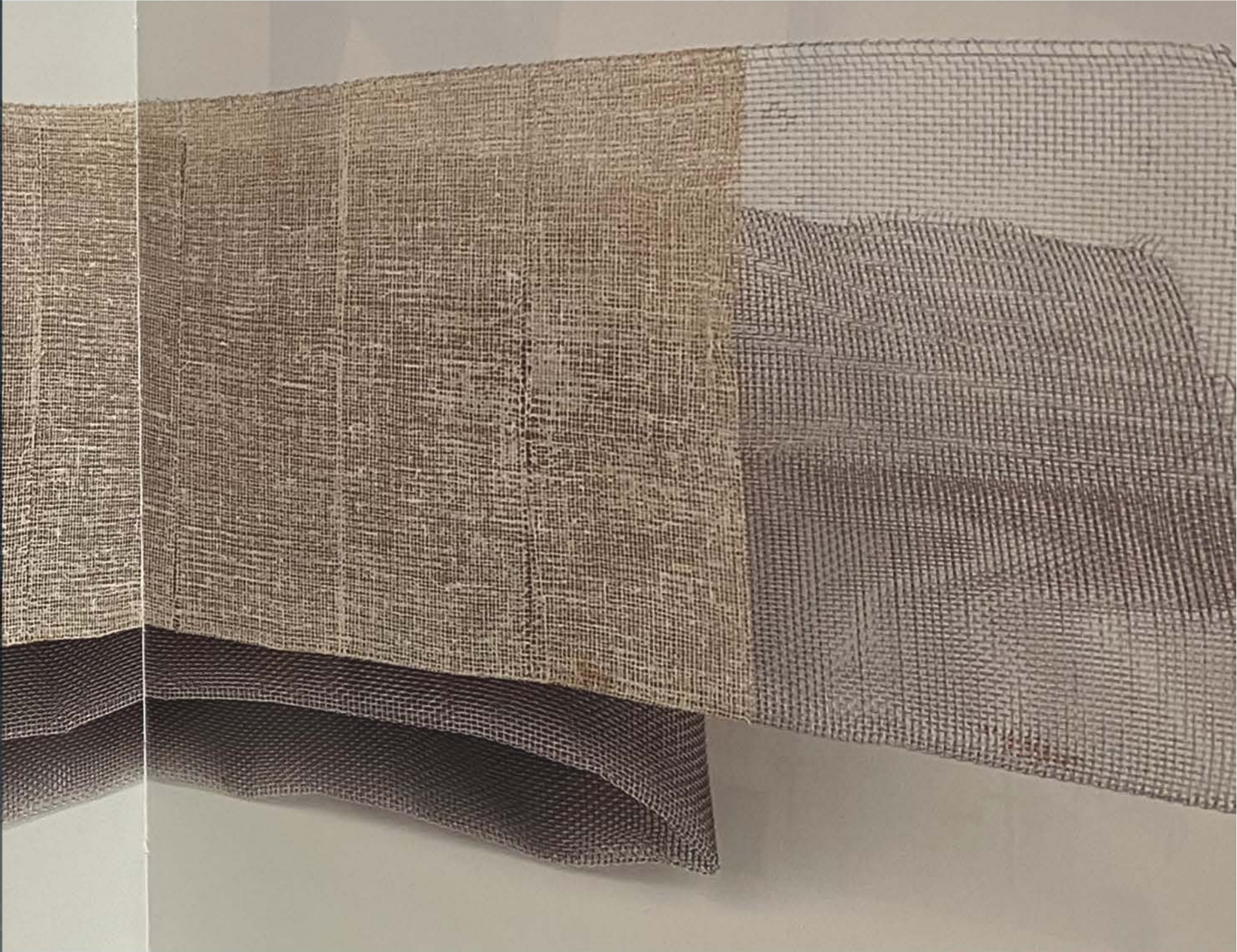


WARPED

CONTROL

BY PHOEBE WHITE

SS23



PHOEBEWHITE@OUTLOOK.COM

07973311071

@PHOEBEWHITE



WARPED
CONTROL



WARPED
CONTROL



WARPED
CONTROL

LOOK 1 DISHEVELLED

EXCESS
AT SS
EXTENDED
AND
PLACED
AROUND
HIPS

FLY FRONT
DOUBLE TOP
STITCH

4cm

1CM
DOUBLE
WELT
POCKET

DOUBLE WELT
POCKET EXTENDED
TO FRONT

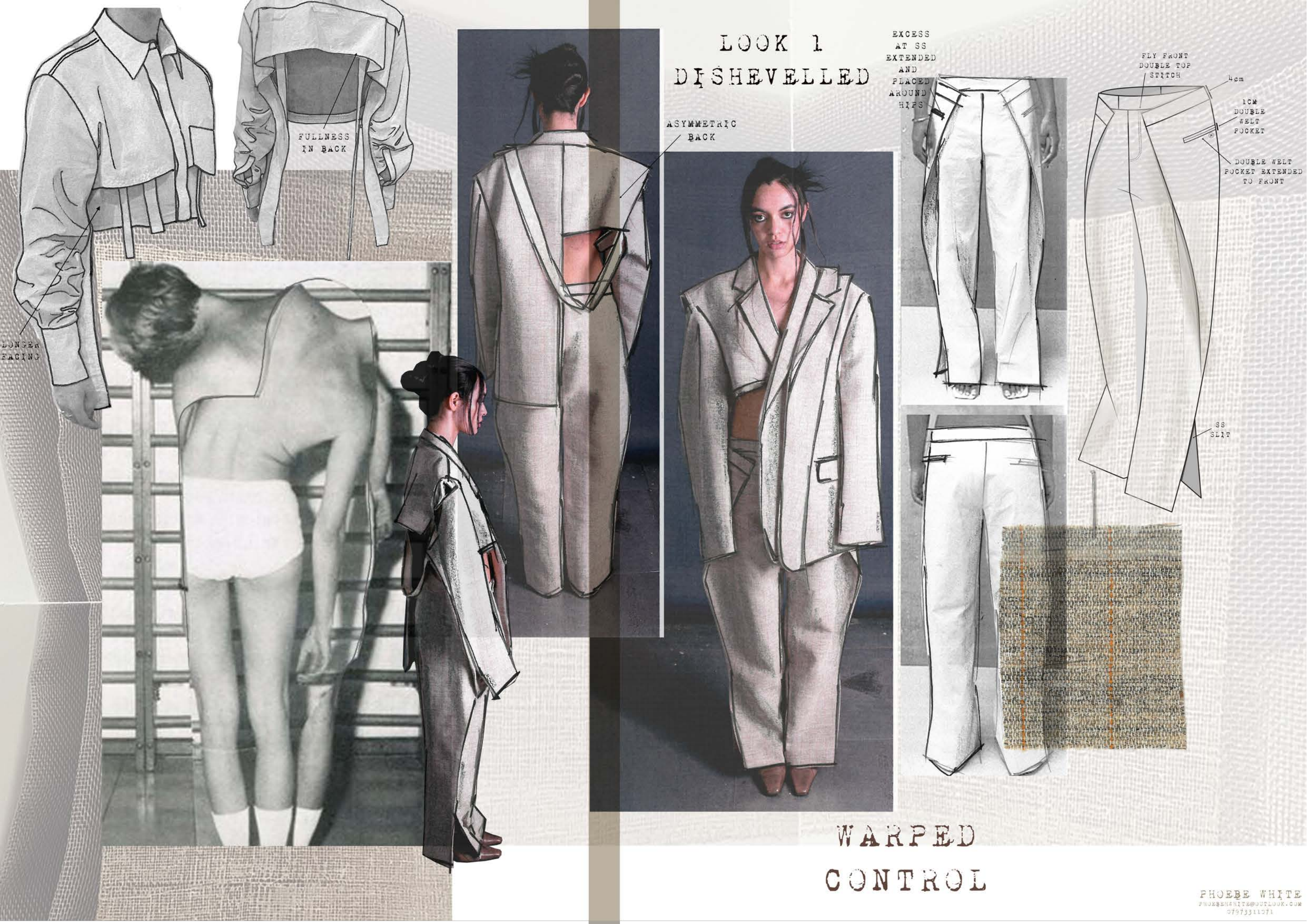
SS
SLIT

ASYMMETRIC
BACK

FULLNESS
IN BACK

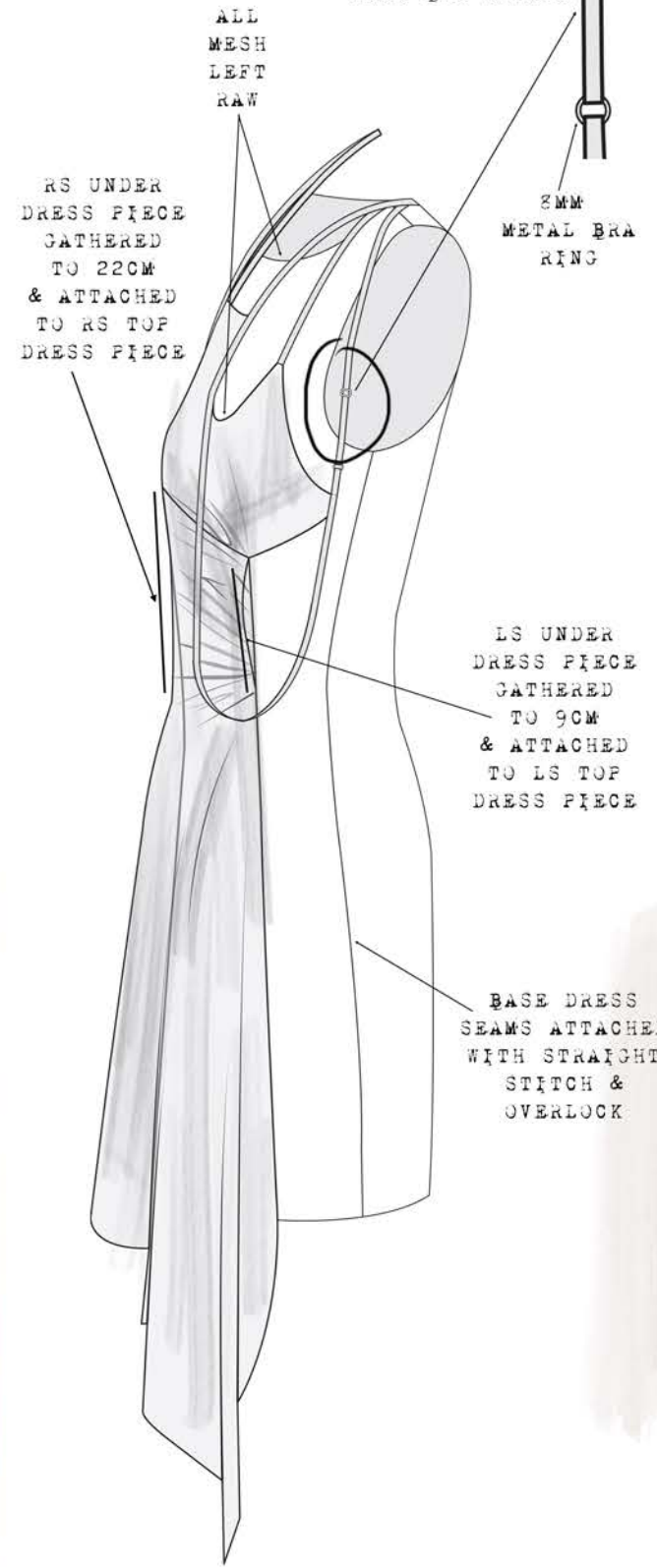
LONGER
FACING

WARPED CONTROL



LOOK 2
CONSTRICTED

SHADING
REPRESENTS
EXCESS FABRIC
TO REMOVE



FRONT
DRESS
PATTERN

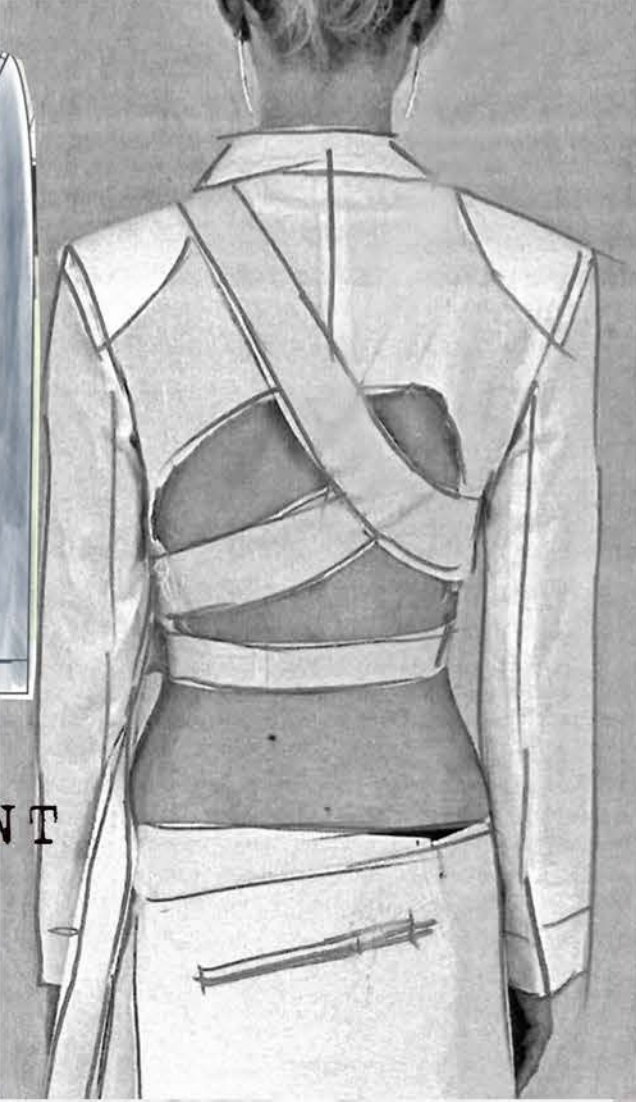
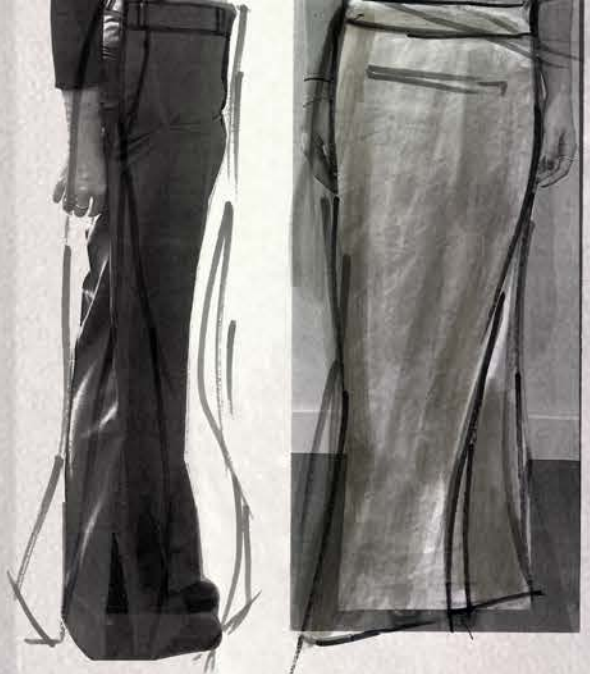
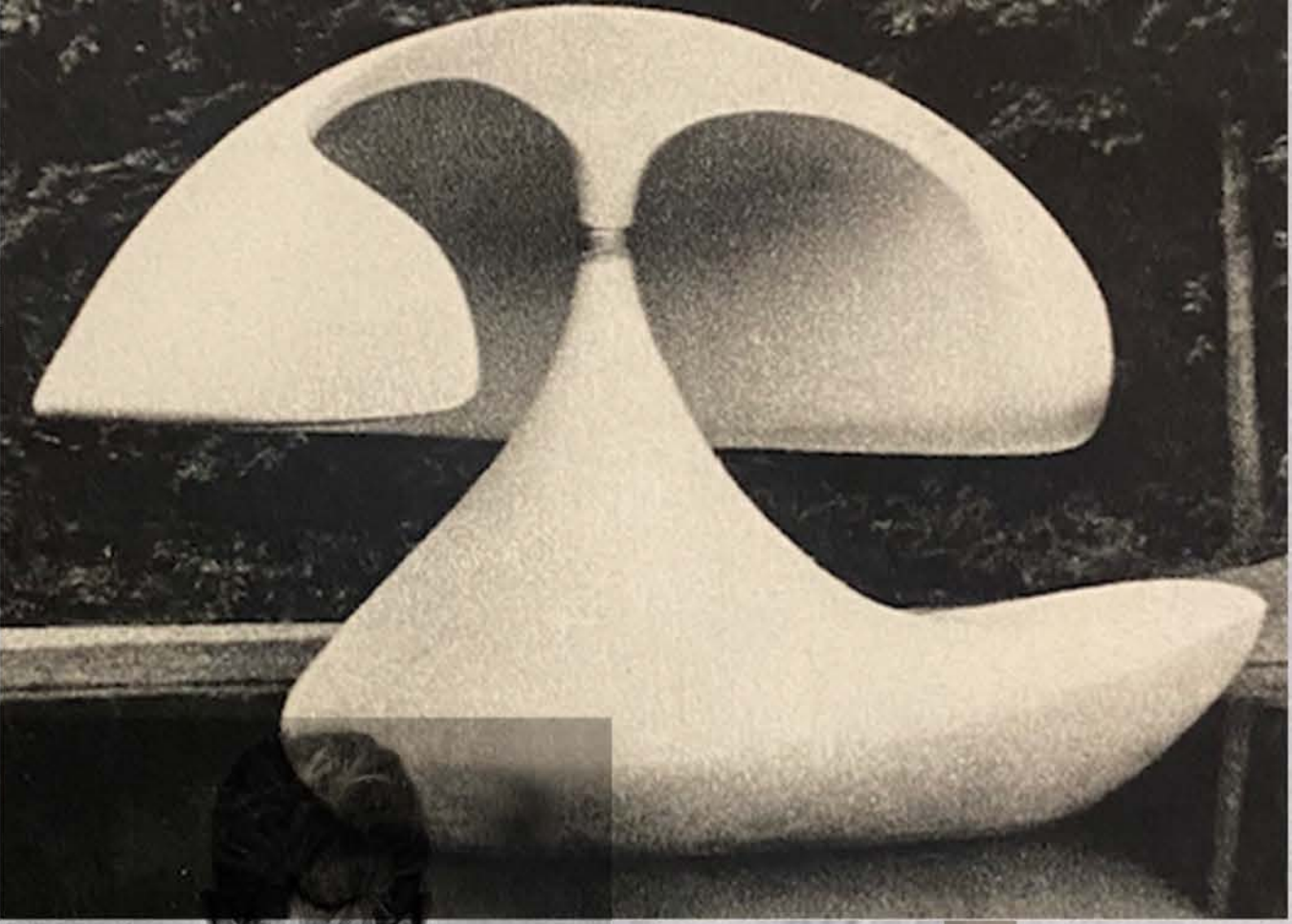
BACK
DRESS
PATTERN

CUT ON FOLD

CUT ON FOLD

PATTERN TAKEN FROM
SOURCE PIECE AND
DRAPED ON STAND

WARPED
CONTROL



LOOK 3
TRANSPARENT

WARPED
CONTROL



ADJUSTABLE CROSS OVER BACK
BRA STRAPS WON'T BE SEEN
UNDER COAT



SINGLE
WELT POCKET



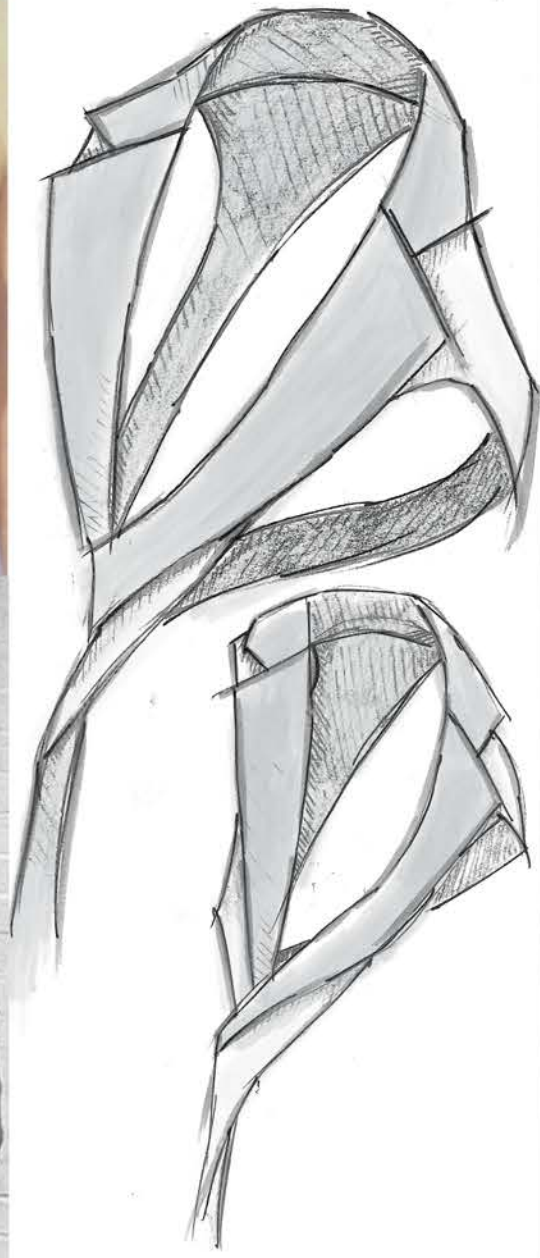
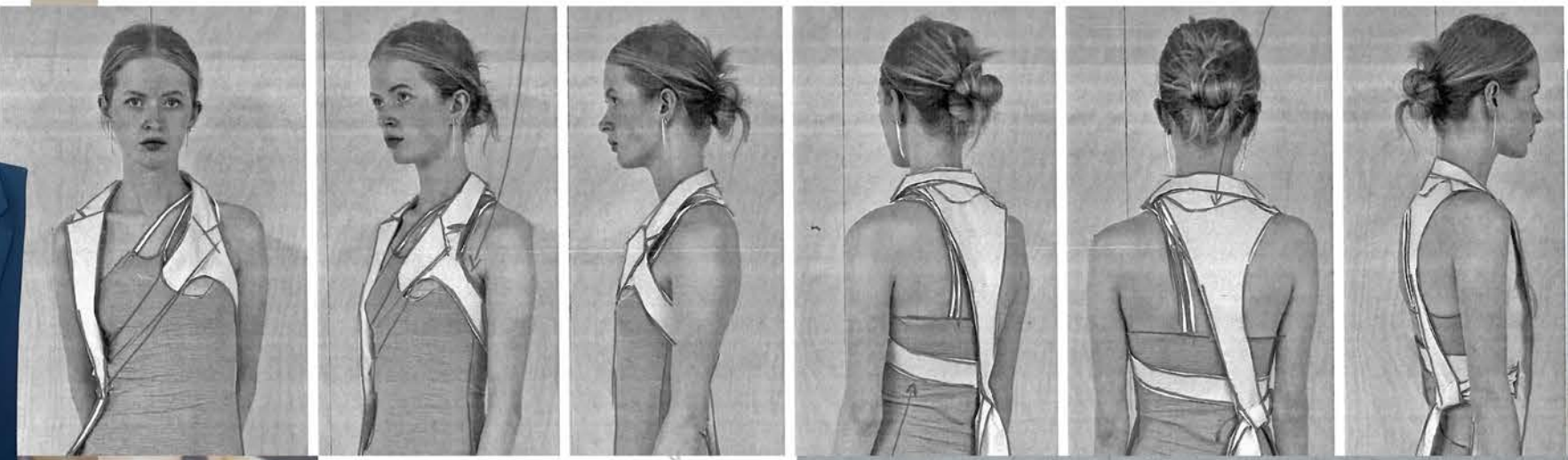
WARPED
CONTROL

LOOK 4
DISCONNECTED

LOOK 5
TRAPPED



TRANSLATE
DRAPED
NECKLINE



ADD
STRAFS

STEAM
KNIT TO
SHRINK
BACK

EXPOSED
LEG
FRAMED WITH
OVERLAPPING
DRAPE



WARPED
CONTROL

LOOK 6
RELEASED

TRANSLATE DOUBLE
WELT POCKET
ONTO SKIRT OVERLAY
TO REFLECT LOOK 1
TROUSERS

HALF SKIRT
FOLD OVER
CROWN ONTO
LEFT BACK
LEG

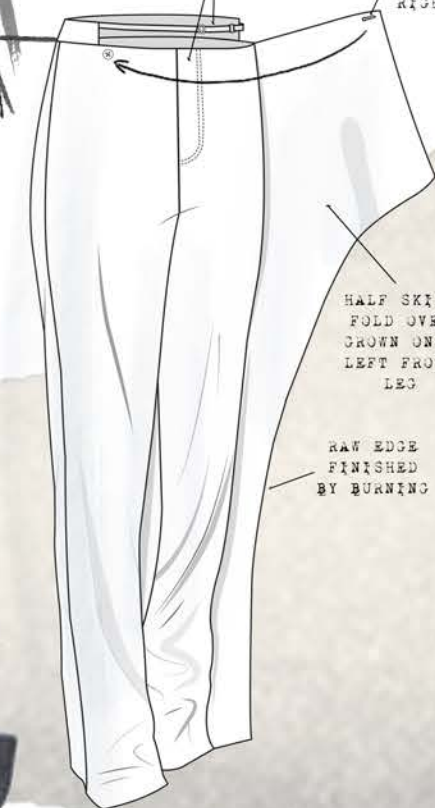
FUNCTIONING
DOUBLE WELT
POCKET



HALF SKIRT
FOLD OVER
CROWN ONTO
LEFT FRONT
LEG.
LONGER
THAN CROWN
ON BACK

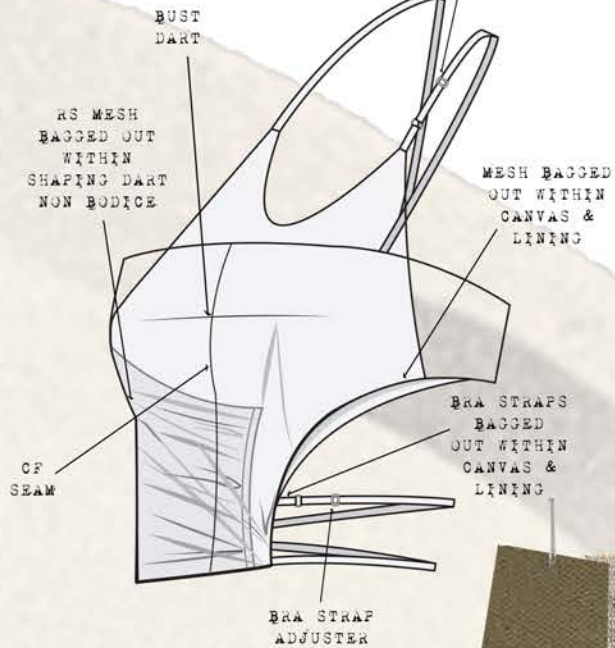
FRONT FLY ZIP
TO FASTEN MAIN
TROUSERS.
ADJUSTABLE BRA
STRAPS TO SECURE
CUT OFF
WAISTBAND

BUTTON HOLE
ON INNER
PIECE OF
HALF SKIRT
FOLD OVER
JOINS TO
BUTTON ON
RIGHT LEG



HALF SKIRT
FOLD OVER
CROWN ONTO
LEFT FRONT
LEG

RAW EDGE
FINISHED
BY BURNING



BUST
DART

RS MESH
BAGGED OUT
WITHIN
SHAPING DART
NON BODICE

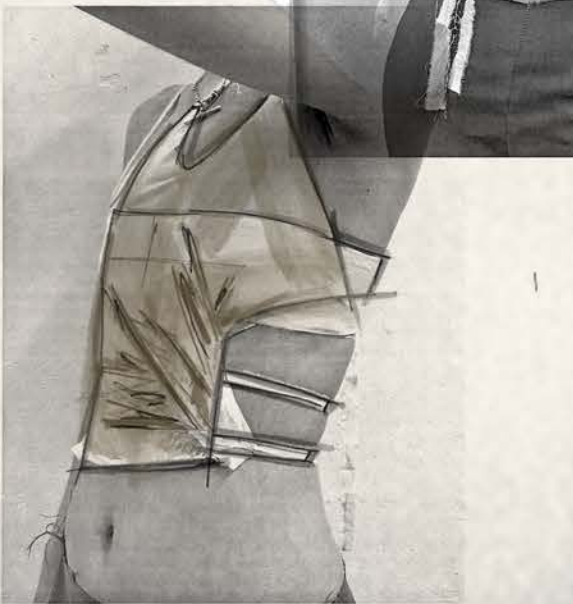
CF
SEAM

BRA STRAP
ADJUSTER

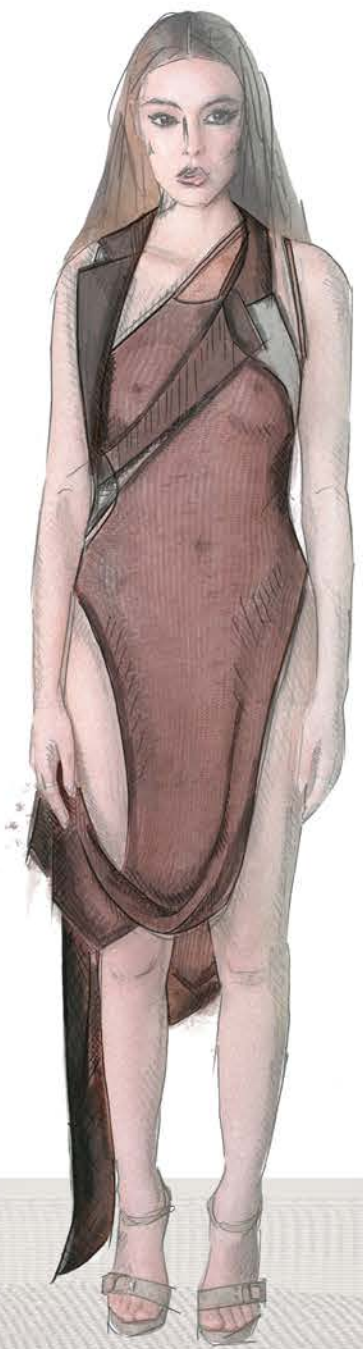
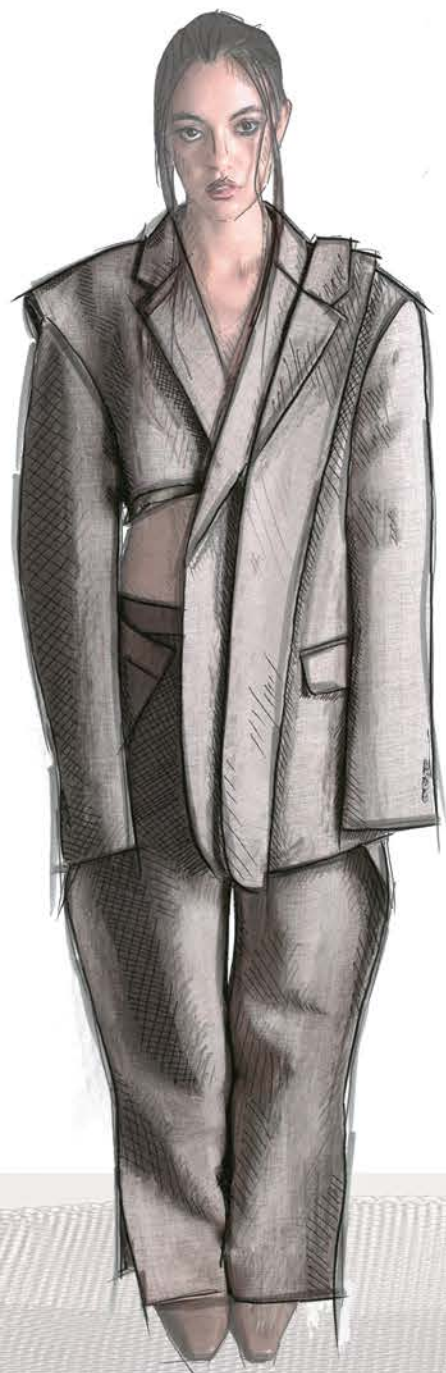
BRA STRAP
ADJUSTER

MESH BAGGED
OUT WITHIN
CANVAS &
LINING

BRA STRAPS
BAGGED
OUT WITHIN
CANVAS &
LINING



WARPED
CONTROL



WARPED
CONTROL