

# AMELIA BROWN

Ameliaebrown2@gmail.com

07985431573

## University of the West of England BA Fashion Textiles

Within my work, I use a contemplative approach which marries design with human experiences, ancient practice, and anthropology. My sustainable ethos and passion for learning new sustainable practices drive my design and knitted texture outcomes so they are innovative and relevant. This submission contains three projects: Rite, VIRGIN GALACTIC X AMELIA BROWN and The Tourist/LOEWE X AMELIA BROWN.

Rite is a project exploring how clothing used to define people's characteristics and mannerisms. For example: Fishermen wore Ganseys and smoked tobacco pipes, Komus, Japanese mendicant monks, wore straw baskets on their heads and played a flute. A characteristic they all have is the mind set to maintain and repair their clothing. The project was inspired by Documentary photography by photographers such as Hiroshi Hamaya, have informed silhouettes that engulf and tie to the body. The final collection encapsulates the characteristics and mannerisms of the project's muse by using knitted textures and coated fabrics.

VIRGIN GALACTIC X AMELIA BROWN is a project that explores the exciting new opportunity to design clothing for commercial space travel. The spacesuit is made to cater to all ages and genders while being functional and safe. Inspiration for the spacesuit came from the individuality and technicality of diving gear worn by South Korean diving women, historical diving gear and game concept art. Seamless, highly efficient, and futuristic.

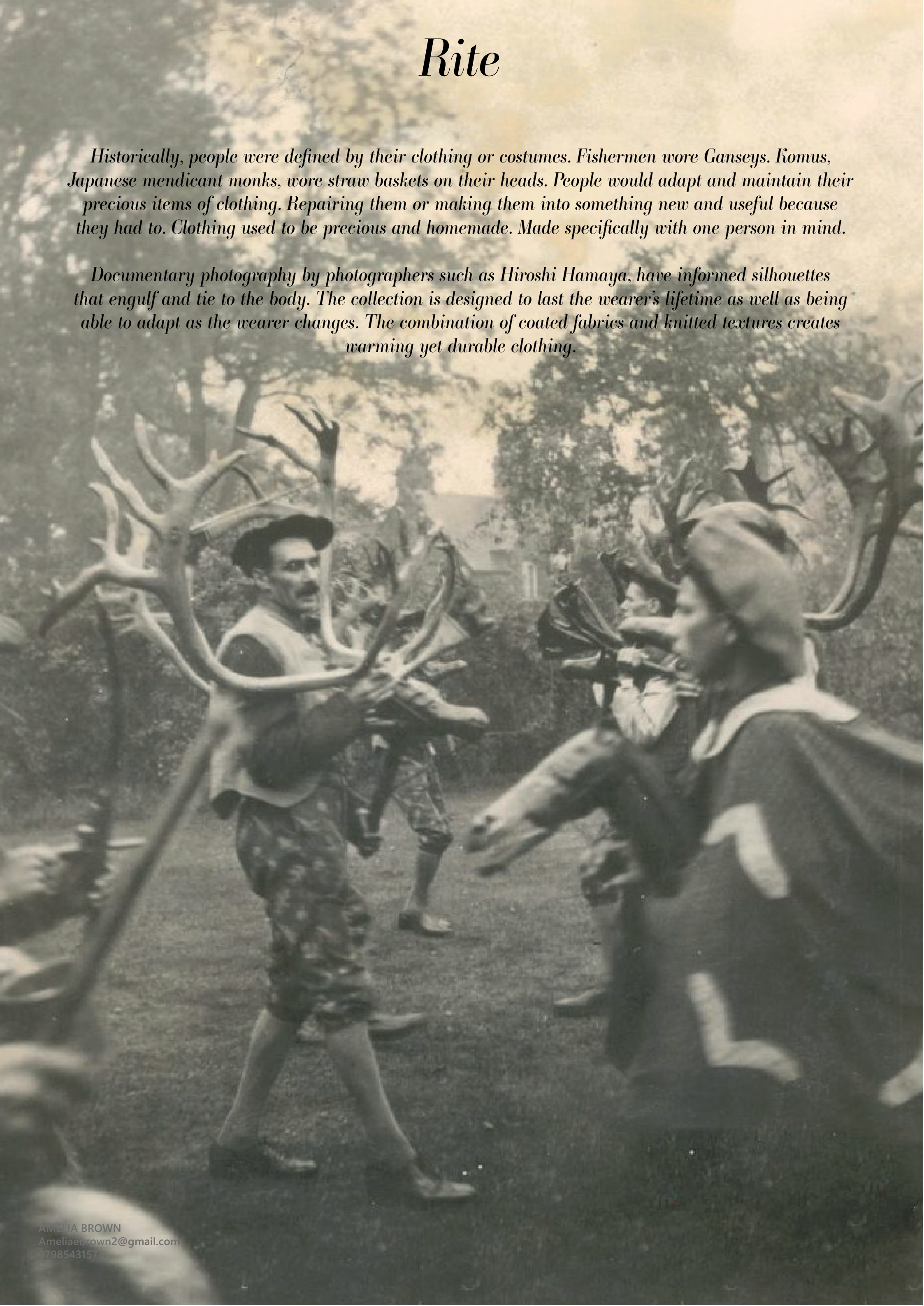
The Tourist/ LOEWE X AMELIA BROWN is a project that explores the ideas around being a tourist and the impacts it has. Being a tourist has two sides: enjoying a beautiful sunny climate and endangering the balance of the local environment. Tourism causes disturbances to wildlife and reduction of wild areas. On holiday disposable plastics are rife so within this collection only recycled plastics have been used. Martin Parr's hyper realistic photography of seaside holidays and David Stewart's photography exploration of the strangeness of everyday life, people, and pop culture have informed the collections colours, patterns, and silhouettes.



# Rite

Historically, people were defined by their clothing or costumes. Fishermen wore Ganseys. Komus, Japanese mendicant monks, wore straw baskets on their heads. People would adapt and maintain their precious items of clothing. Repairing them or making them into something new and useful because they had to. Clothing used to be precious and homemade. Made specifically with one person in mind.

Documentary photography by photographers such as Hiroshi Hamaya, have informed silhouettes that engulf and tie to the body. The collection is designed to last the wearer's lifetime as well as being able to adapt as the wearer changes. The combination of coated fabrics and knitted textures creates warming yet durable clothing.



“Intricate locks and patterns...”

“Intangible Heritage”



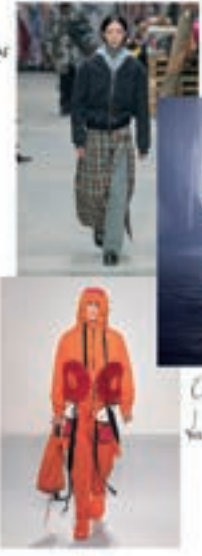
# Muse

Refuses to move about to east of technology to protect the environment



Spends days on the shoulders of forests, talking to animals -> loudness of blows & long centuries are better than 2

Eva  
Fall 2023 Mercedes



Cony Green  
Fall 2024 Mercedes

Dressed for any of every possibility of hunting, kneeling, sitting, reaching



Old coats & old hats, hoods, and jackets made to make work, sitting, kneeling, sitting -> windproof on all and not in particular front, highly practical, sometimes have been built into shoes (small shapes), hoods -> hoods on shoulders -> hoods & hoods on top of each other



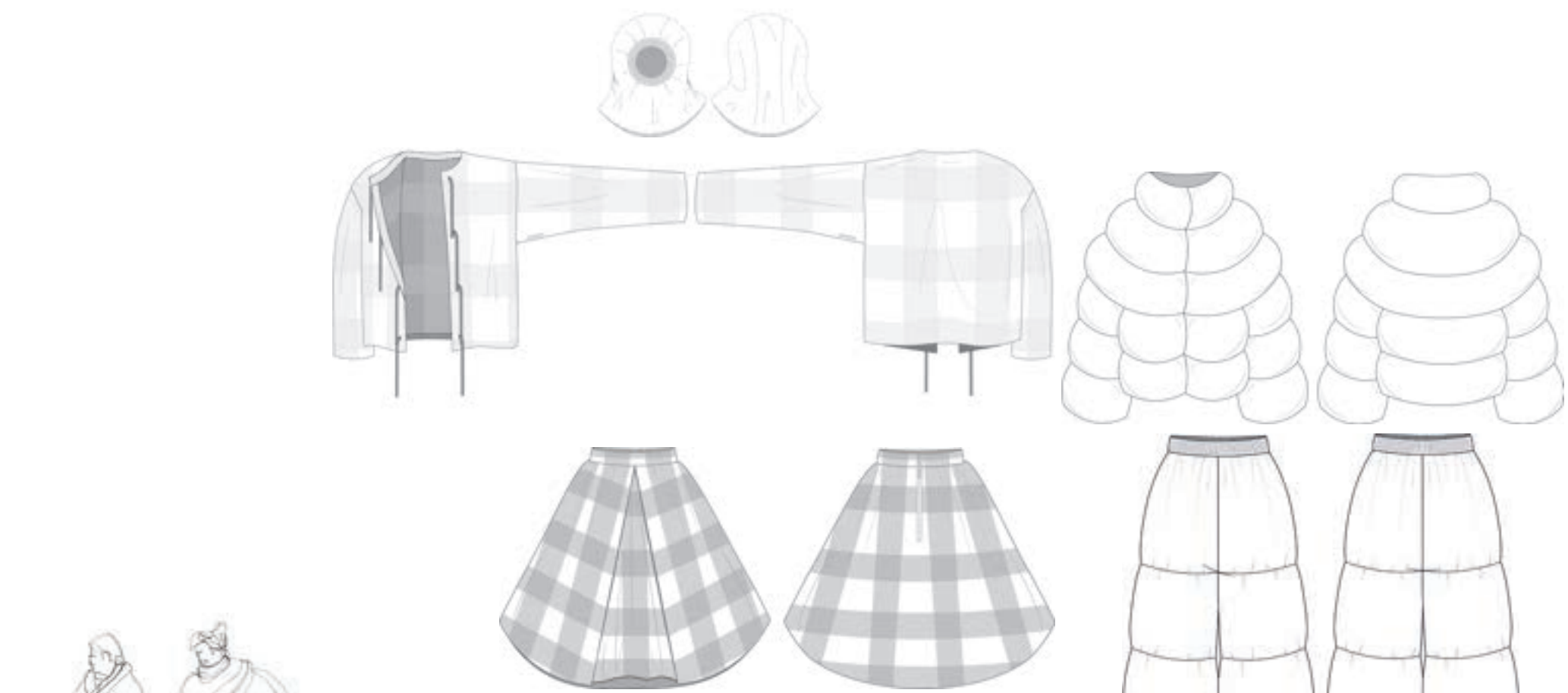
Unknown Photographer



Urban nomad - Winfried Baumann 2010/2012

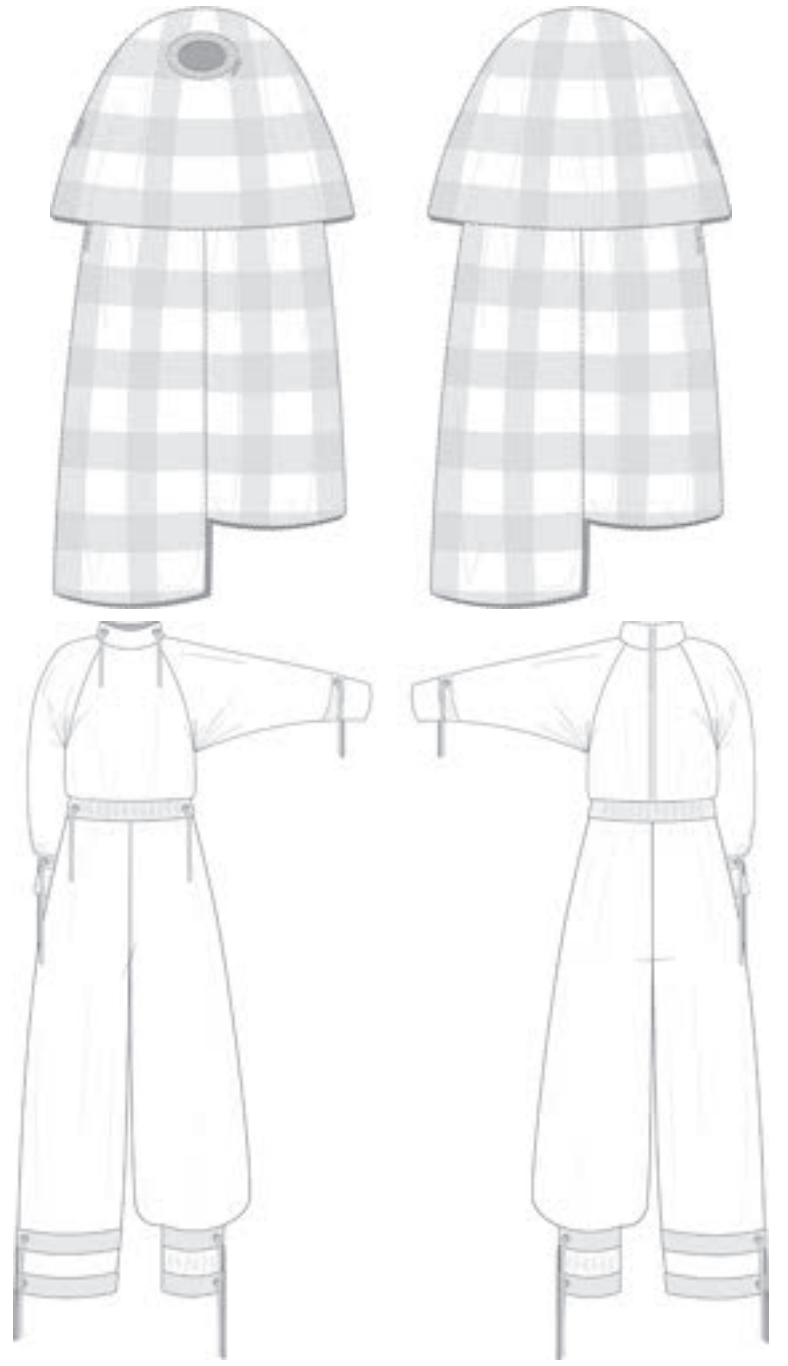






Left to Right: Poly Cotton Burnt Orange, Black Denim, 100% Cotton, Plain Cork Vinyl 14% Cork, 82% PU, Blue Mohair 67% Superfial Mohair, 3% Extra fine Merino Wool, 30% Polyamide, Beige Mohair 30% Mohair, 40% Acrylic, 30% Polyamide, 10 gauge

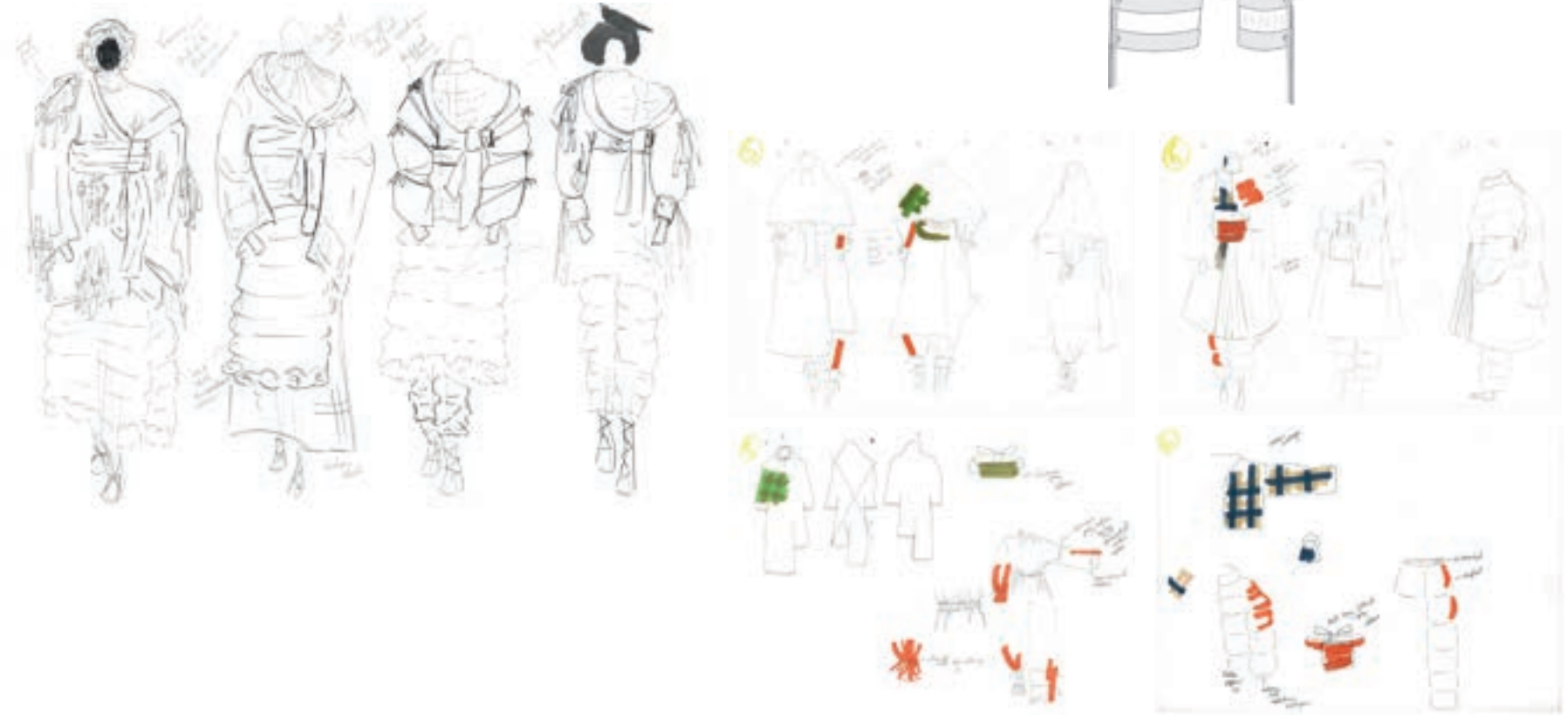
Left to Right: Plain Cork Vinyl 14% Cork, 82% PU, Poly Cotton Burnt Orange, Dark and Light Green Mohair 67% Superfial Mohair, 3% Extra fine Merino Wool, 30% Polyamide, 10 gauge



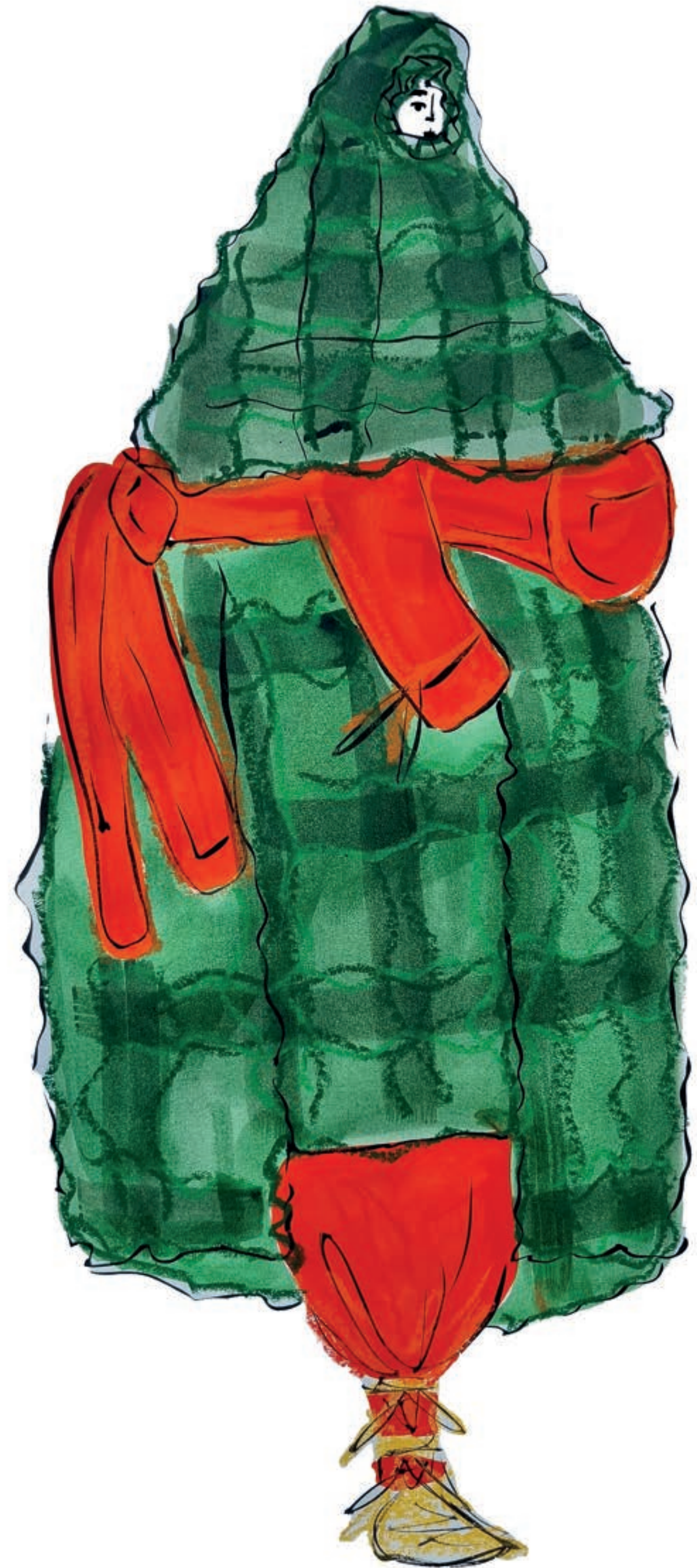
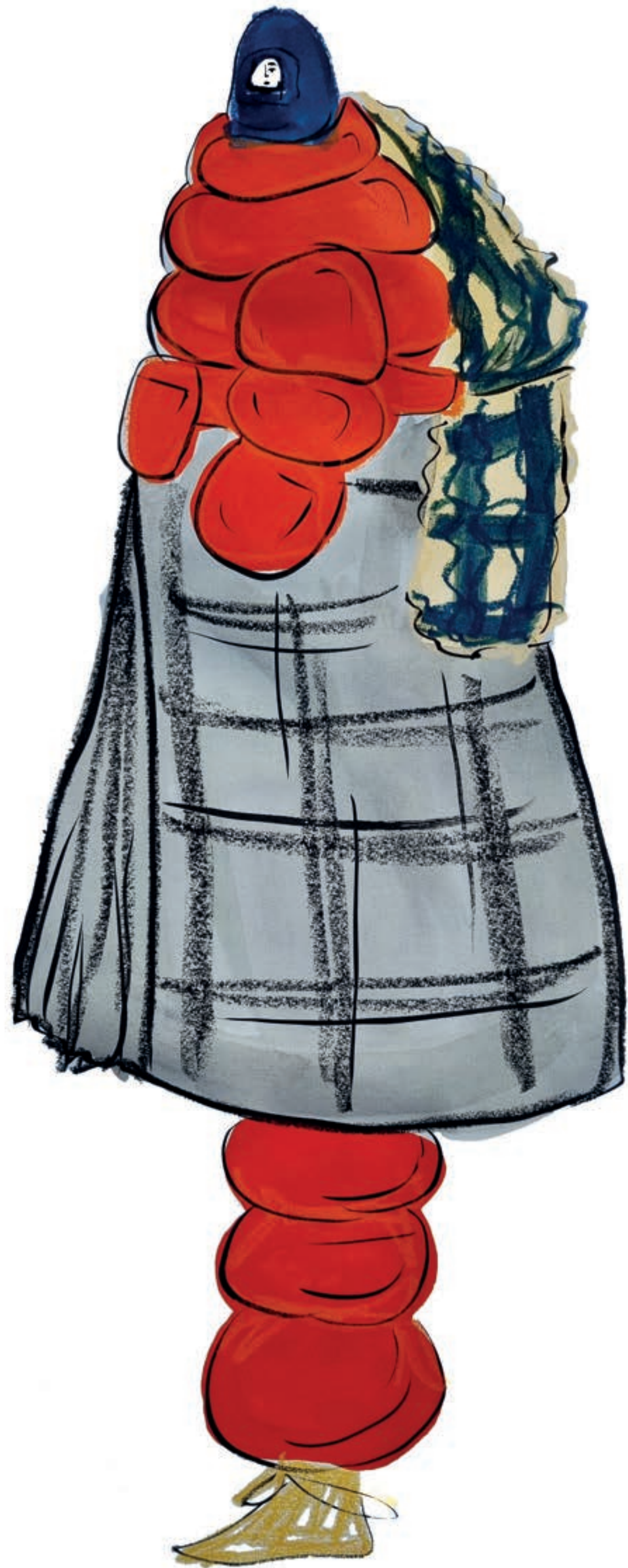
Unknown Photographer



Hiroshi Hamaya, 1956









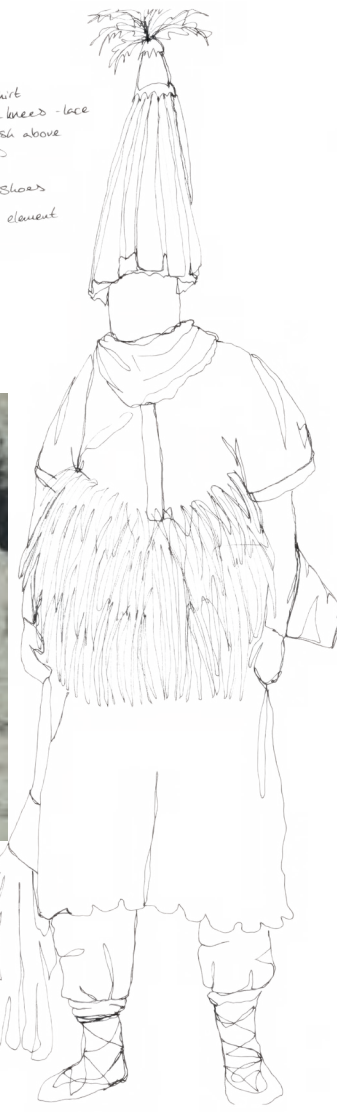
Left to Right: Plain Cork Vinyl 18% Cork, 82% PU,  
 Poly Cotton Burnt Orange, Black Denim 100% Cotton,  
 82% PU, Beige Mohair 30% Mohair, 40% Acrylic, 30%  
 Polyamide, Dark Red Mohair 65% Superfai Mohair,  
 3% Extra fine Merino Wool, 30% Polyamide, Ash Blue  
 Wool, 10 gauge



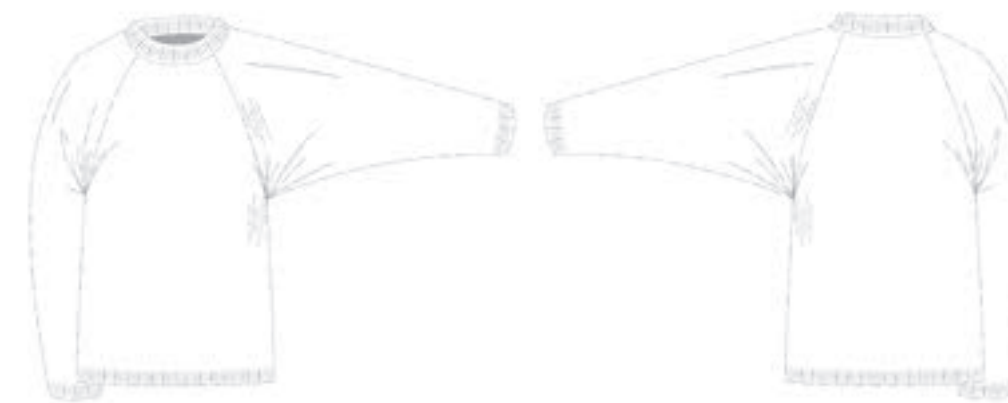
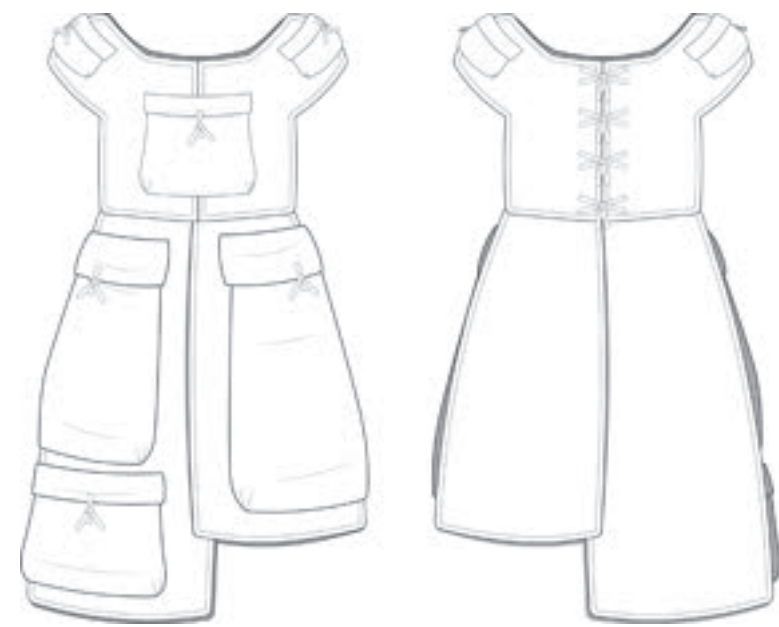
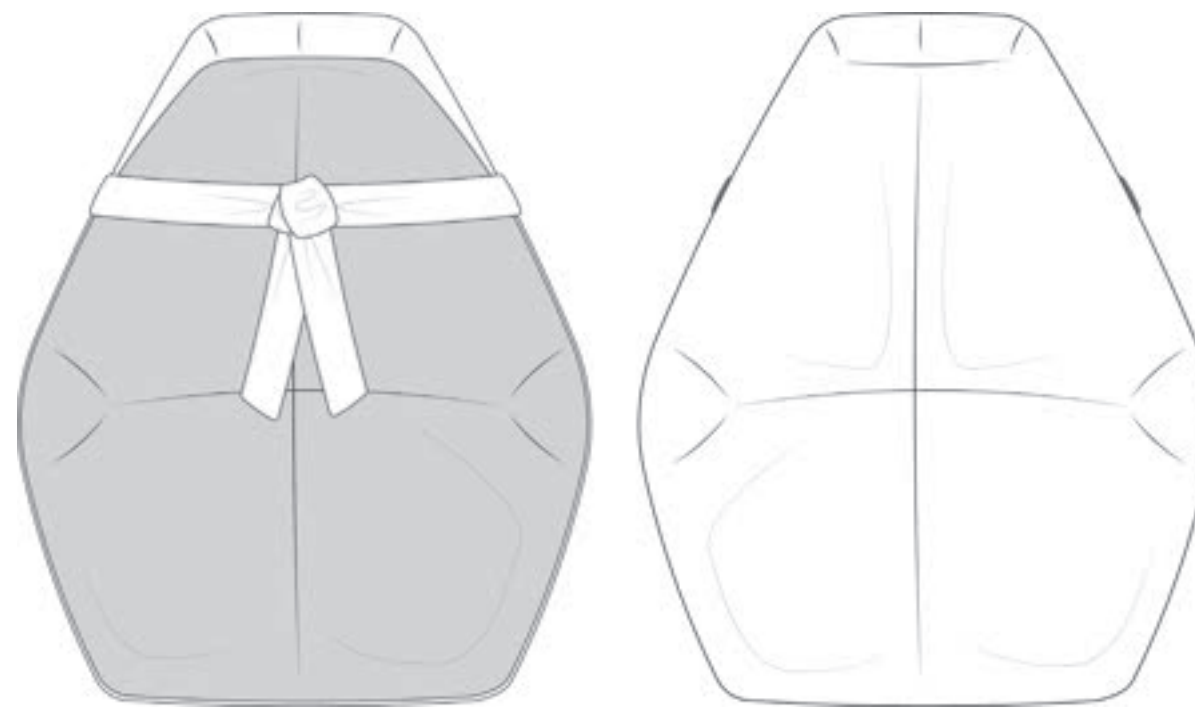
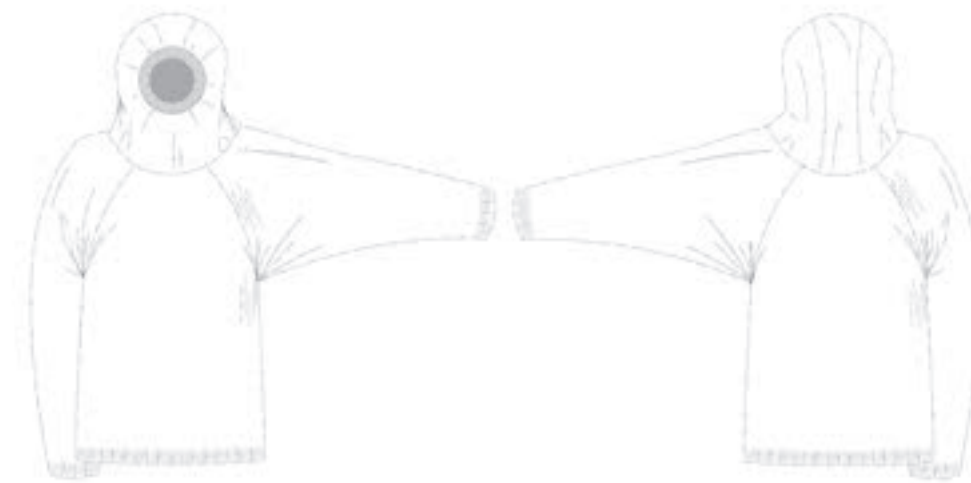
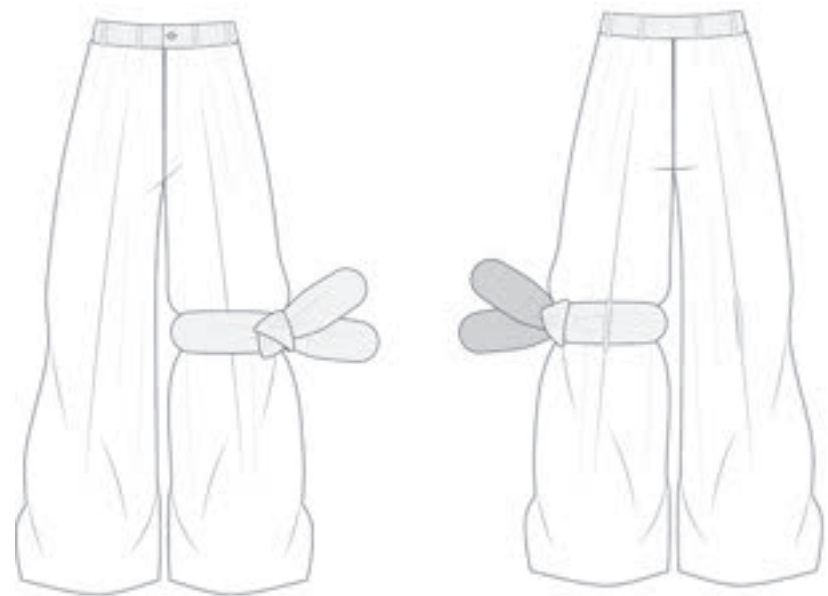
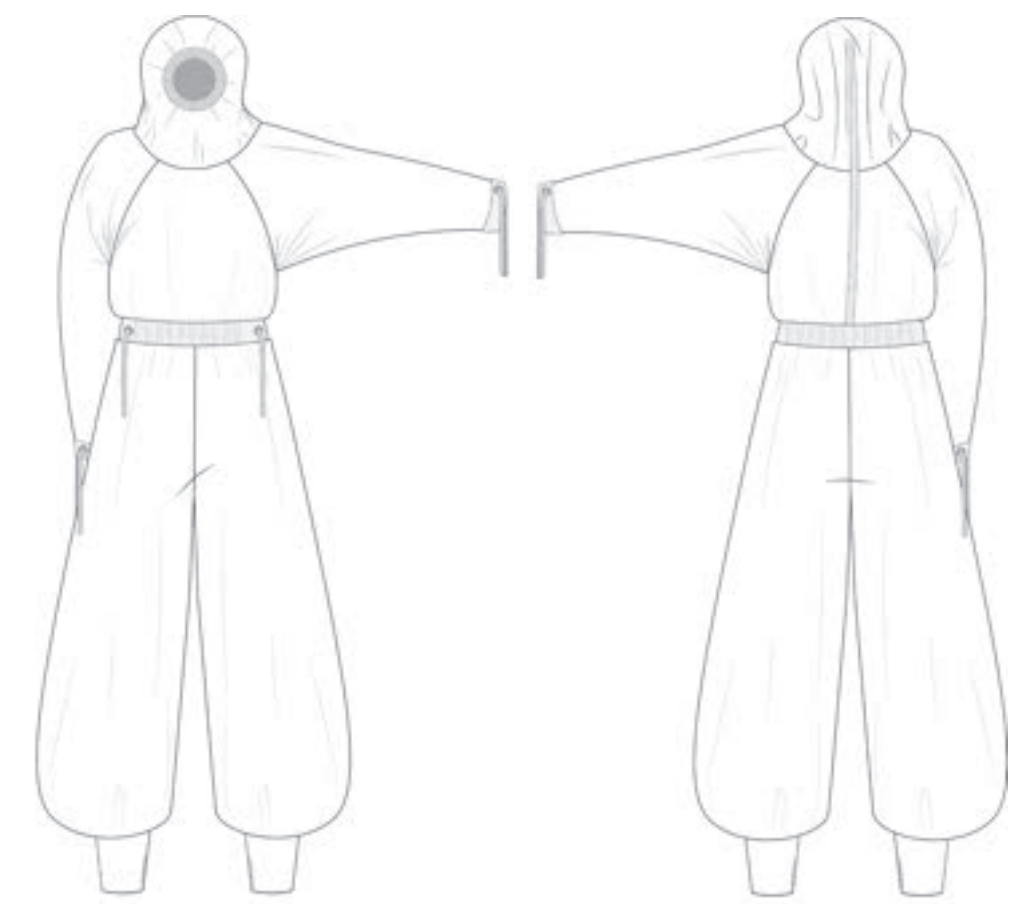
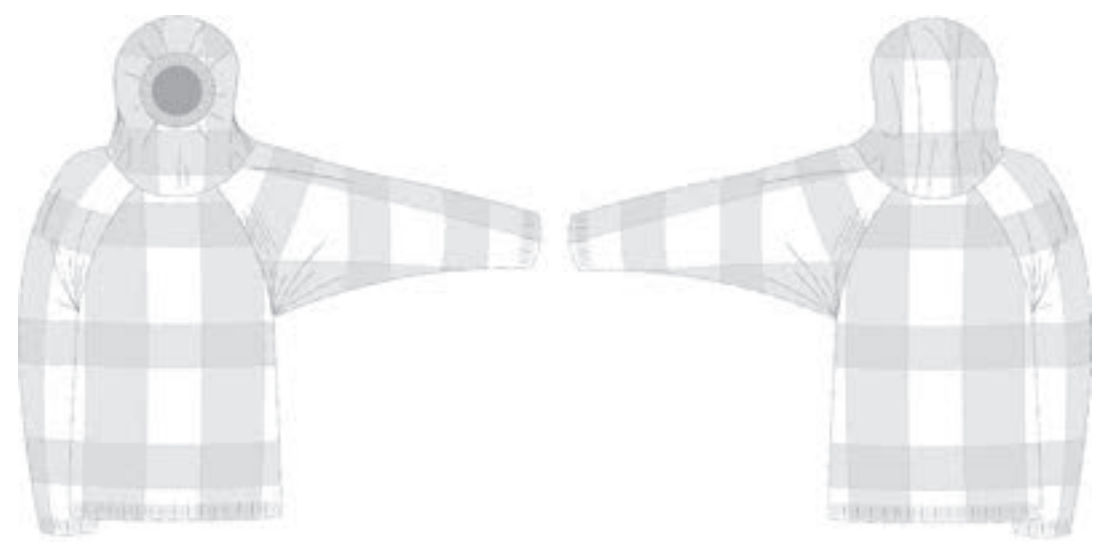
Left to Right: Plain Cork Vinyl 18%  
 Cork, 82% PU, Poly Cotton Olive  
 Green, Beige 100% Felting Wool, Dark  
 Red and Orange 100% Cotton Yarn,  
 Ash Blue Wool, 10 gauge



'The Bell'  
 Customized skirt  
 skirt to the knees - lace  
 trousers (wide above  
 the ankles)  
 high socks  
 full faced slacks  
 1. textured element









Waistband and Mohair Sample  
 1/2 Milano waistband and strap finished on the 12ggg. 4 ends of Ash Blue wool. Linked flush onto plaid mohair. Mohair plaid finished on the 8ggg with 2 ends of mohair.



Face Rib - 8ggg  
 Plaited 2x1 rib. 2 ends Beige Mohair and 4 ends Ash Blue Wool.  
 Linked onto the Silk Dupion to create a flush and professional finish.



Cotton Cord with recycled fabric core.



Tape - 12ggg  
 1/2 Milano Tape in 4 ends of Ash Blue Wool.

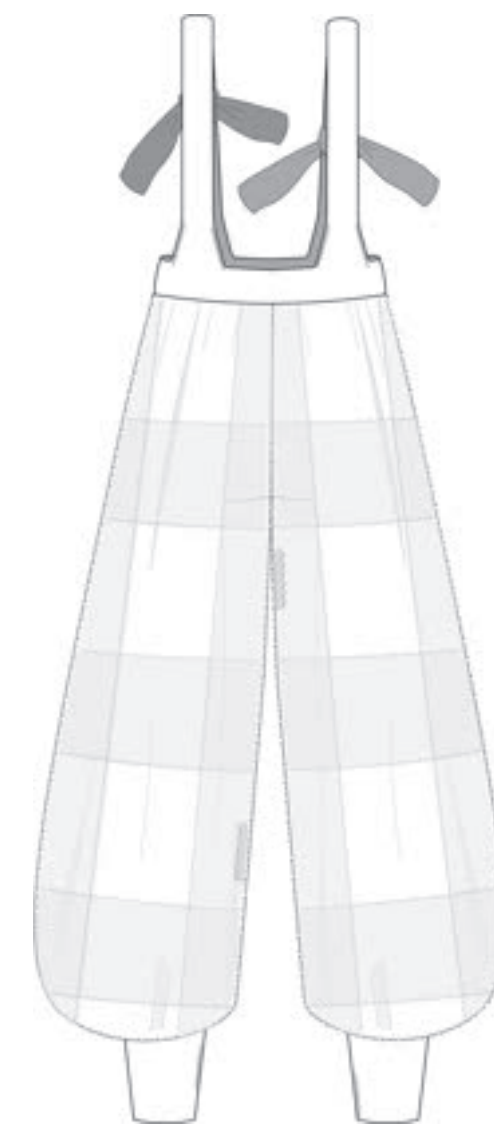
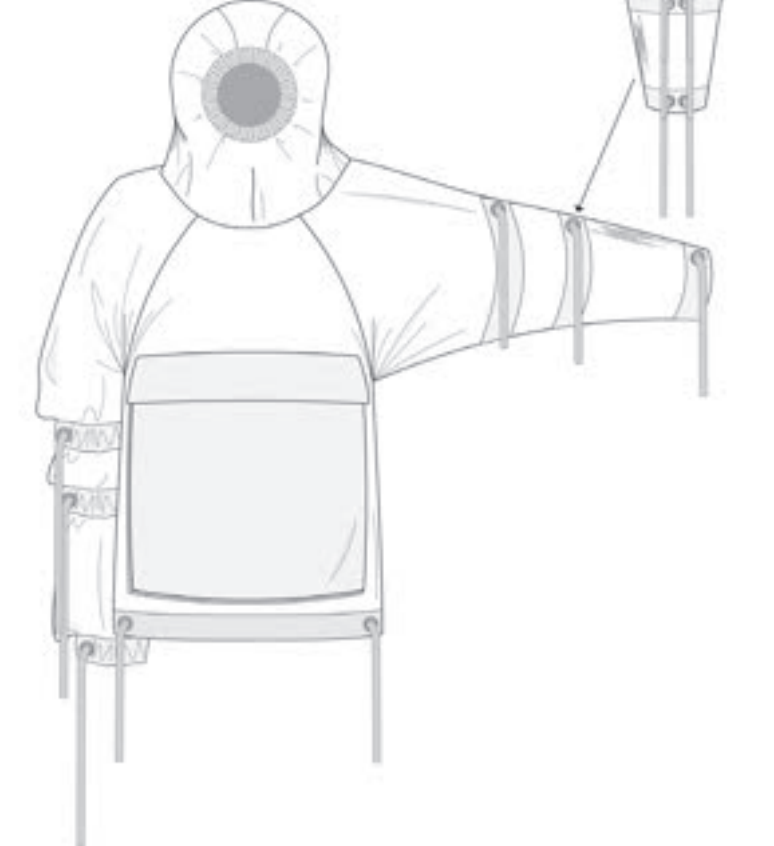
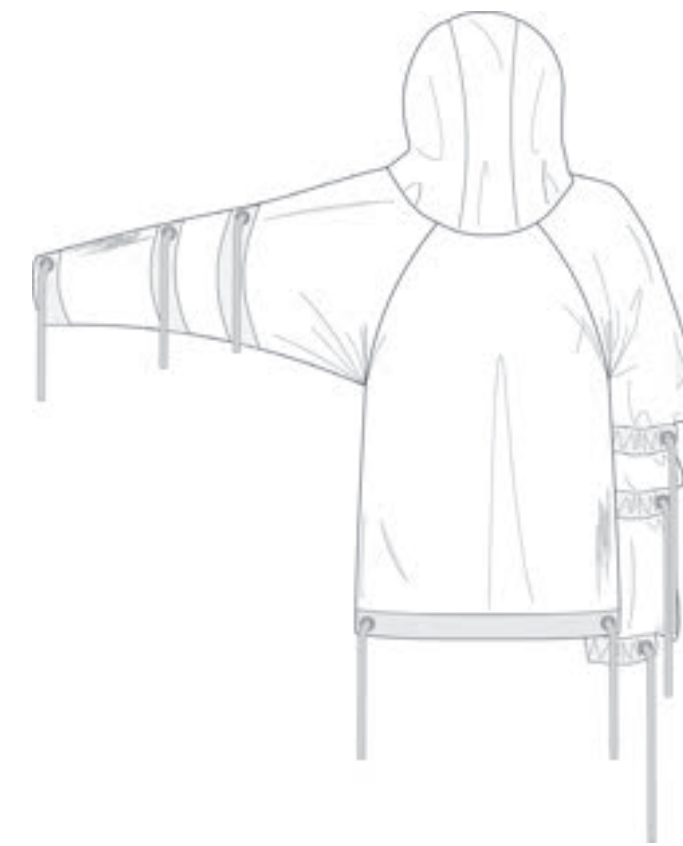
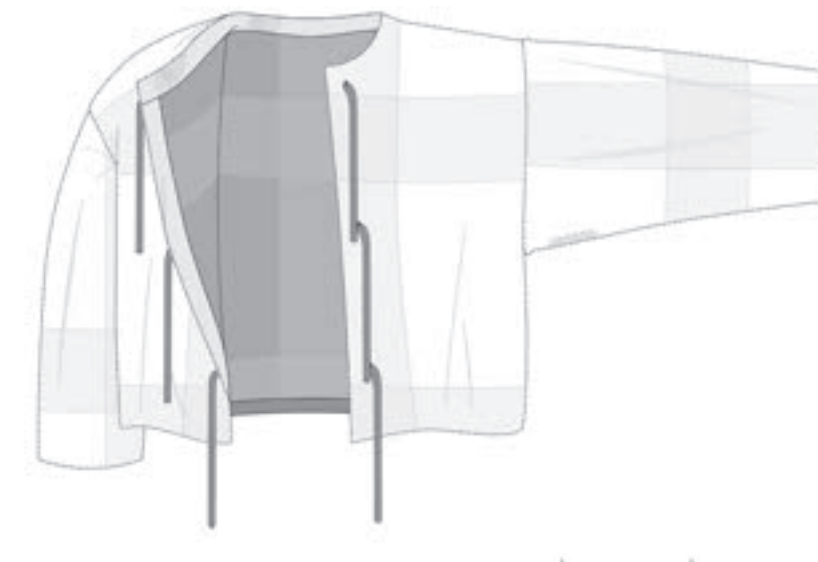
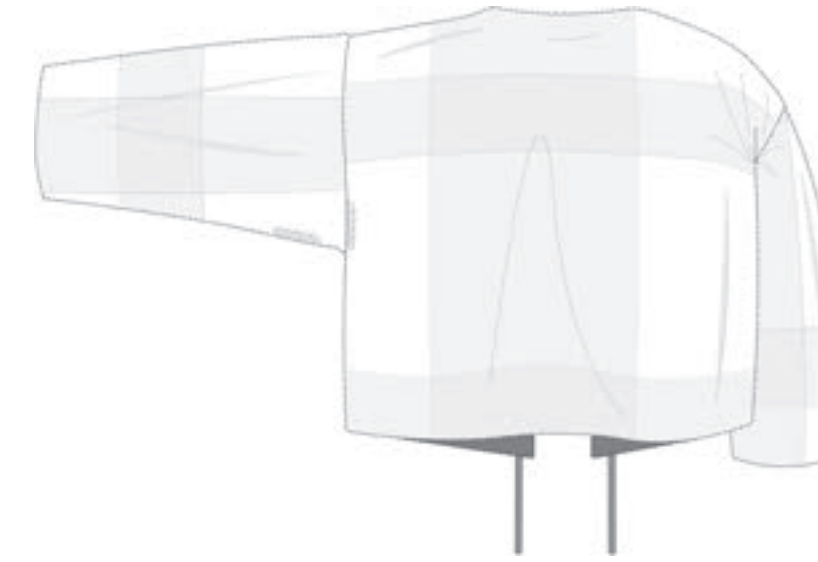


Crochet Ties  
 Crochet chain stitch in 6 ends of mohair; 2 ends of beige and 4 ends of Burnt Orange on a 2.5mm crochet hook.

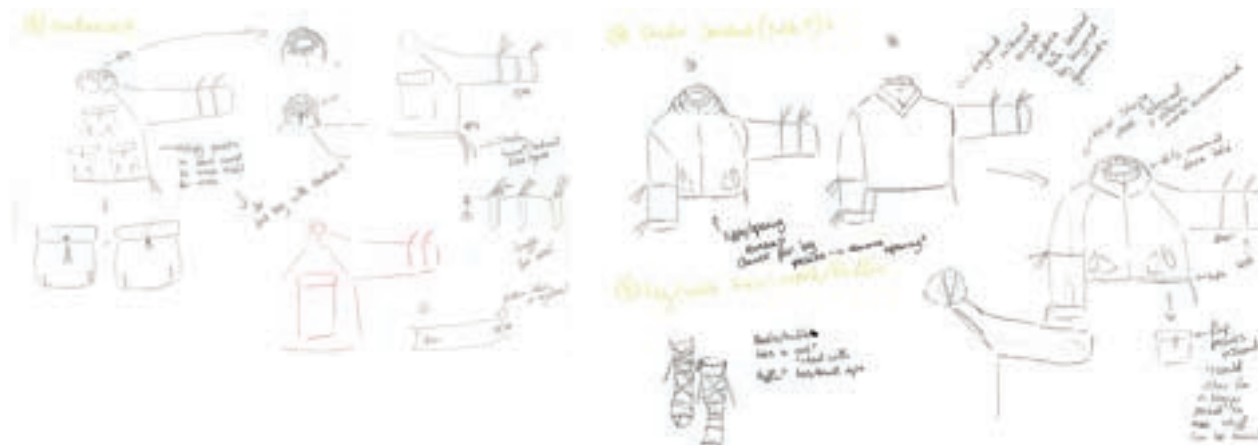
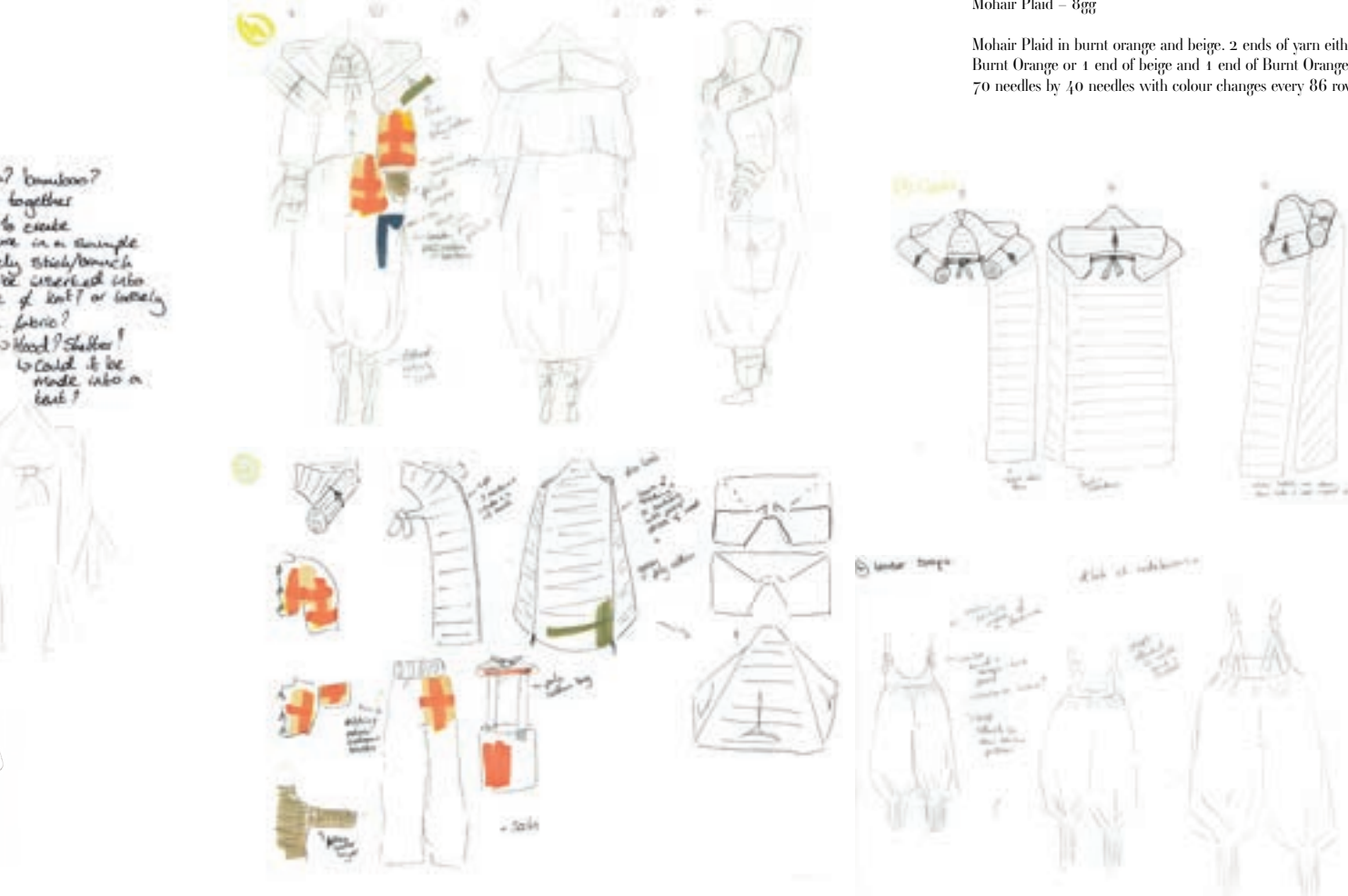


Mohair Plaid - 8ggg

Mohair Plaid in burnt orange and beige; 2 ends of yarn either 2 ends of Burnt Orange or 1 end of beige and 1 end of Burnt Orange. Needle set up 70 needles by 40 needles with colour changes every 86 rows and 48 rows.



-Stima? Bamboo?  
 bed together  
 to create  
 someone in a sample  
 a novel? stick/bunch  
 could be inserted into  
 a piece of knit or woven  
 inner fabric?  
 -hook? Shutter?  
 -could it be  
 made into a  
 bed?



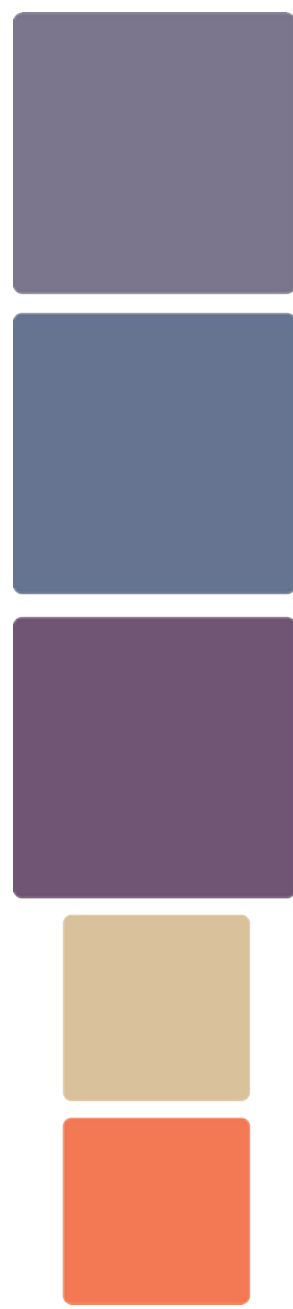
Left to Right: Beige Mohair 30% Mohair, 40% Acrylic, 30% Polyamide, Burnt Orange Mohair 67% Superkid Mohair, 3% Extra fine Merino Wool, 30% Polyamide, Plain Cork Vinyl 18% Cork, 82% PU, Dark Green 100% Silk Dupion, Straw Fabric











Virgin  
**GALACTIC**



**VIRGIN GALACTIC  
X  
AMELIA BROWN**

Virgin Galactic is the world's first commercial spaceline. Their purpose is to connect people across the globe with the awe created by space travel. They offer a short flight into space where you can admire the Earth as well as looking out into infinite space.

The spacesuit is made to cater to all ages and genders while being functional and safe. Inspiration for the spacesuit came from the individuality and technicality of diving gear worn by South Korean diving women, historical diving gear and game concept art. Seamless, highly efficient, and futuristic.

Hyung S. Kim, 2012-2014

**Virgin Galactic**

Futuristic  
Progressive  
**Weightlessness**  
Nostalgic Elements  
Performance Clothing  
Feather technology  
Windows to look down on Earth  
Mothership and Spaceship  
Brand colour - Purple  
**Minimum 90-minute Spaceflight**  
Under Armour collab on original suit

**Requirements:**  
**The Wearer**  
**Masculine or Feminine form**  
**High level of affluence**  
**Age 18 - 100**  
**Good level of fitness**  
**Medium build**

**Fire Retardant/ Meets Heat Standard BS EN 11612**

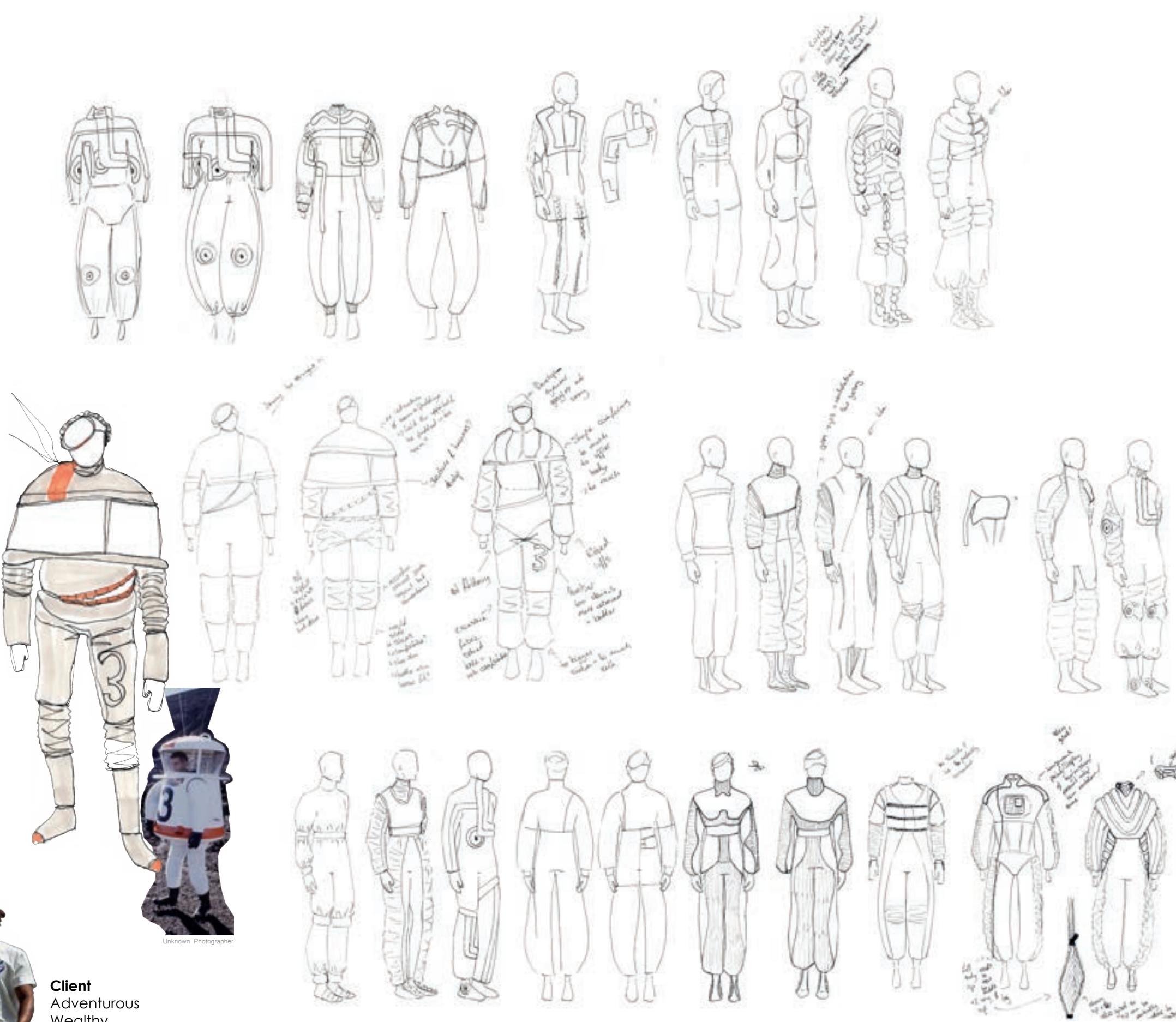
Self-sealing pockets (1cm overlap)  
No exposed metal  
Action Pleats have diagonal stitching at edges  
Thermoregulating fabrics  
Seams and fastenings flat towards the back of the body  
Shoulder padding/protection - high impact zones and support for parachute

**Comfortable**

Cooling  
Fast-Drying  
Moisture managing  
Pressurised cabin - no need for life preserving spacesuits



SPACEPORT AMERICA



**Client**

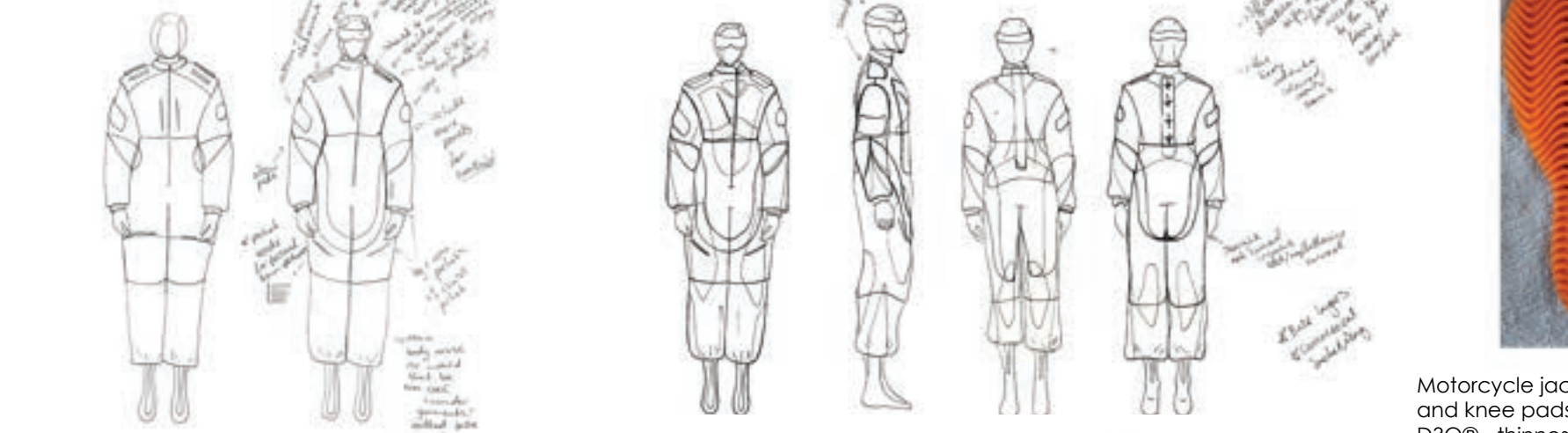
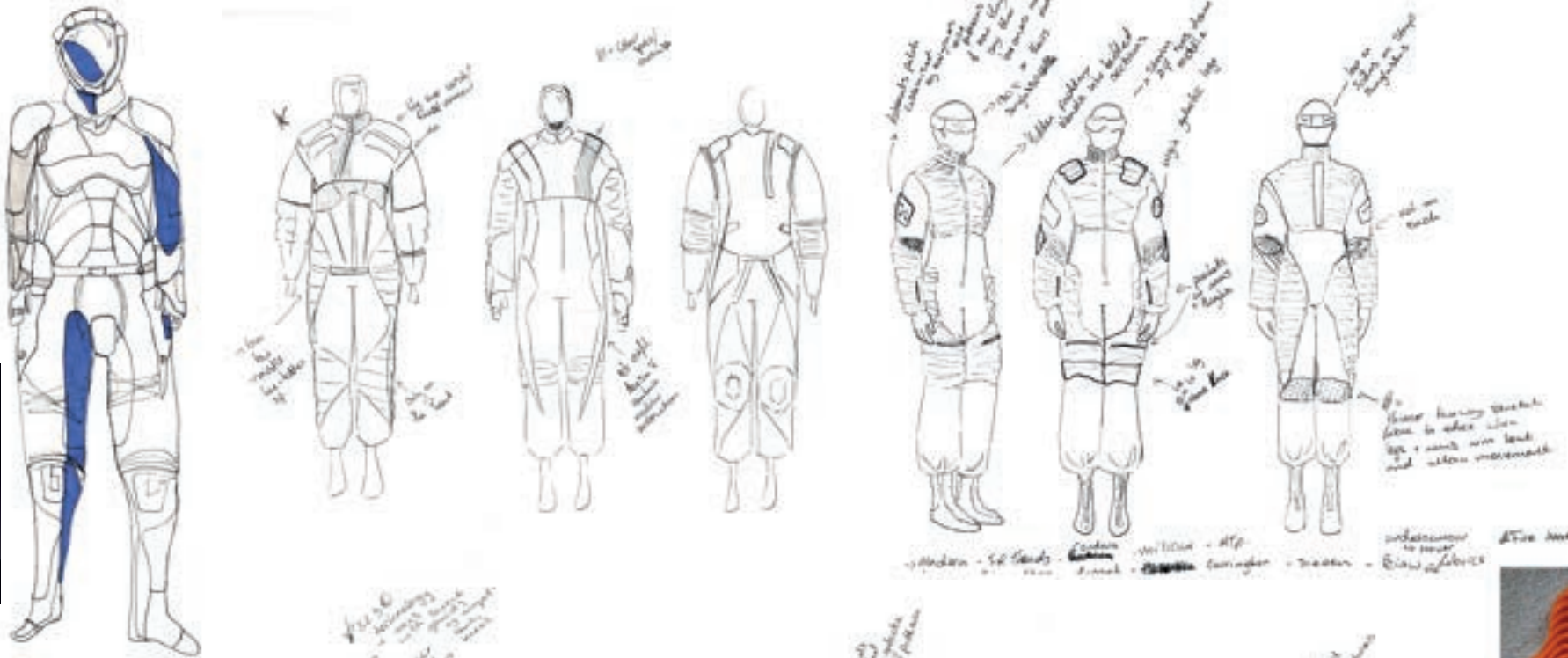
Adventurous  
Wealthy  
Enjoys escapism  
Quirky  
Media Ready

**Sports personality** like: Lewis Hamilton, Anthony Joshua  
Youtubers/ Content Creators: Markiplier (Mark Fischbach), PewDiePie (Felix Kjellberg), Good Mythical Morning (Rhett and Link)  
These people will use flight content and be great at promoting company and space travel





Concept Art - Unknown Artist



Summer Bike Jacket - Revit! - Motorcycle clothing brand  
Polyester 600D (Polyester yarn)



Motorcycle jacket impact protection and knee pads  
D3O® - thinnest and most advanced impact protection for limbs, back and ankles  
Made from advanced polymer chemistry  
Soft and comfortable  
Absorbs and dissipates energy of impact  
Come in different patterns/prints - could be printed in Virgin Galactic Logo



Snap arm adjustments  
Mesh underneath arms to make the jacket breathable

Vents down the back to allow air flow  
Body mapping principle - A principal that allows designers to place the right fabrics in the right place to keep people (athletes) dryer and more comfortable and performing at their peak - Analysis of body temperature regulation and sweat during exercise.  
Adidas Climachill - Woven titanium draws heat away the body, cooling, microclimate and enhanced breathability

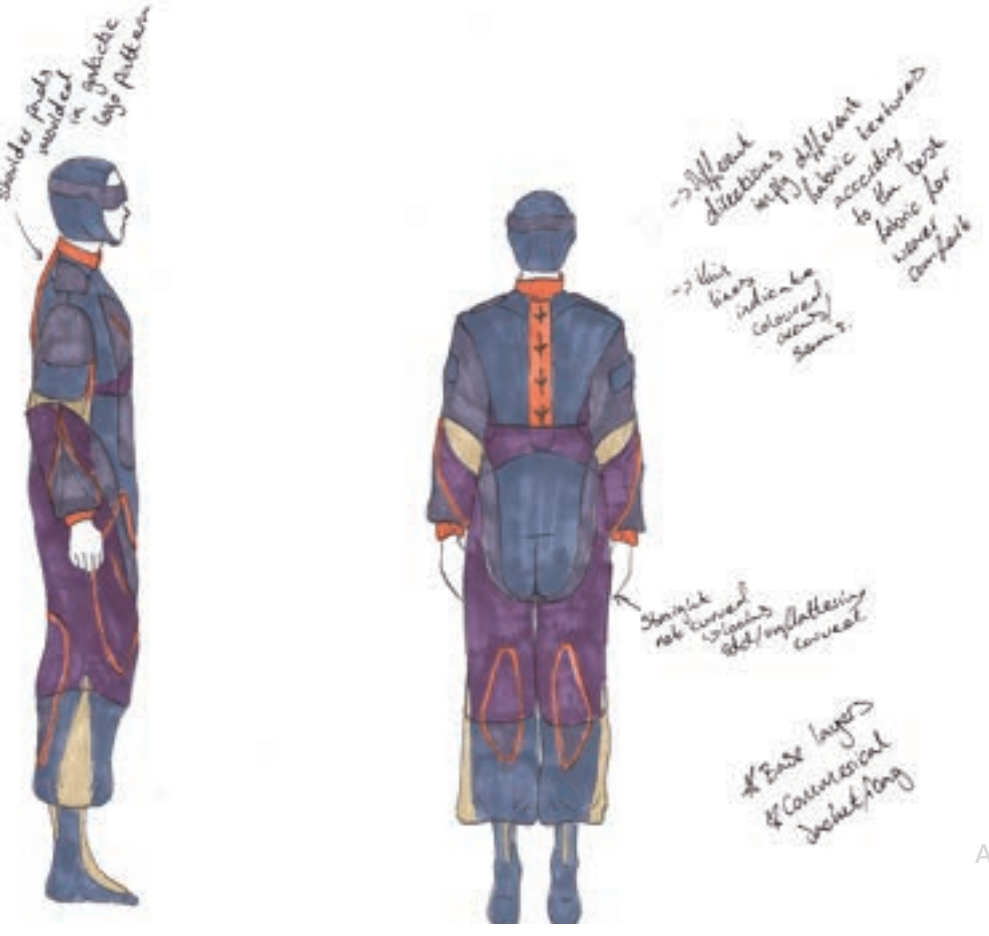
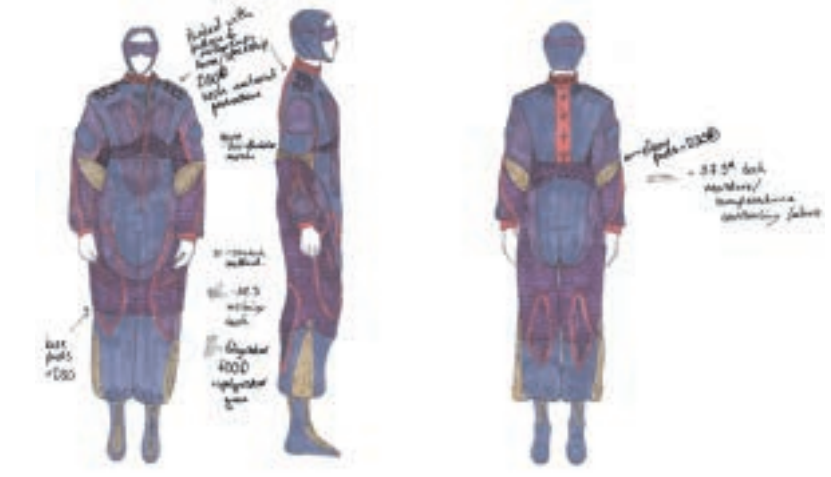
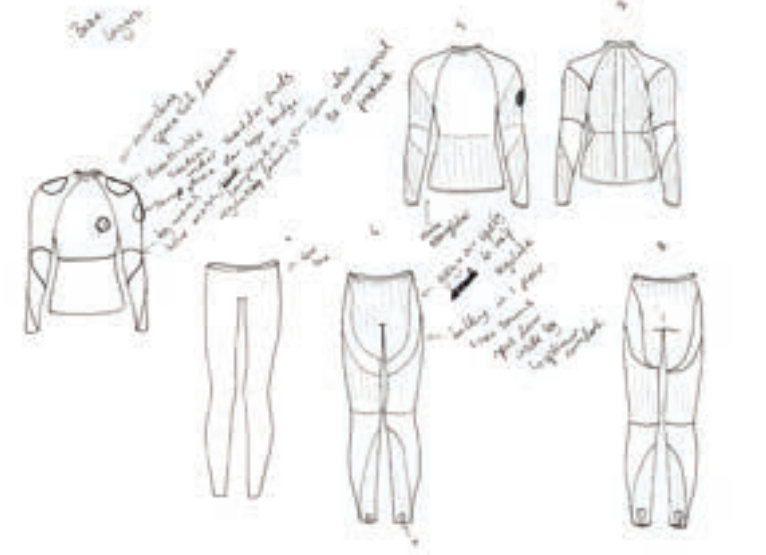
Winter Bike Gloves



Eternal knuckle protection  
Touch screen enabled

Hook and loop and elastic wrist fastening - wouldn't work on spacesuit as it would be a snag hazard

GORE-TEX - not useful in space as it doesn't rain  
Stretch material located on fingers which allows for more freedom of movement  
Richa - Armacor® - Teflon coated material, every 4th thread has Kevlar® woven in with it, highest resistance to abrasion of all textiles, waterproof, stretchy, windproof and breathable







Titan1260 fabric from pbi insures moisture is wicked away from the body keeping the wearer cool.



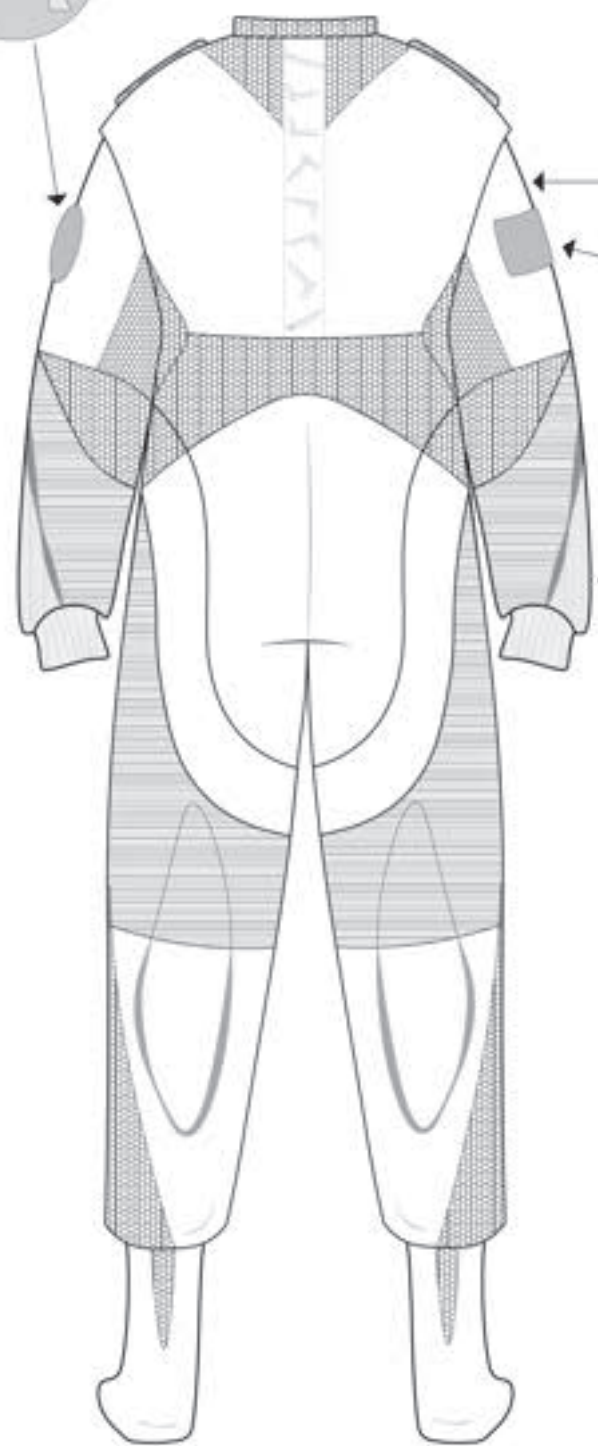
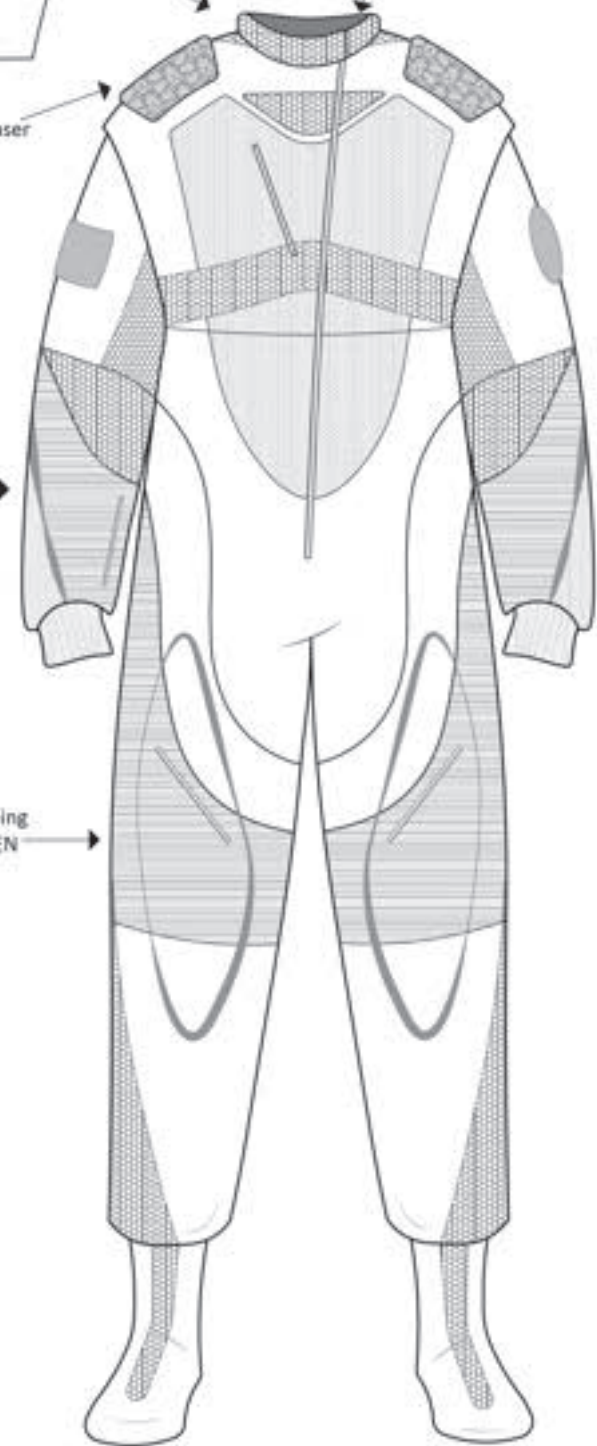
Logo badge - holographic material

LAST-A-FOAM® FR-3700 laser cut into repeat pattern of mothership.



Fire resistant YKK zip and tape covered with a flap.

High Tenacity Polyester yarn for ribbing over arms, wrists and legs from SIOEN SPINNING.



TENCEL™ LUXE makes up the main body of the spacesuit.



Personal mission badge with visual voice note and flight path

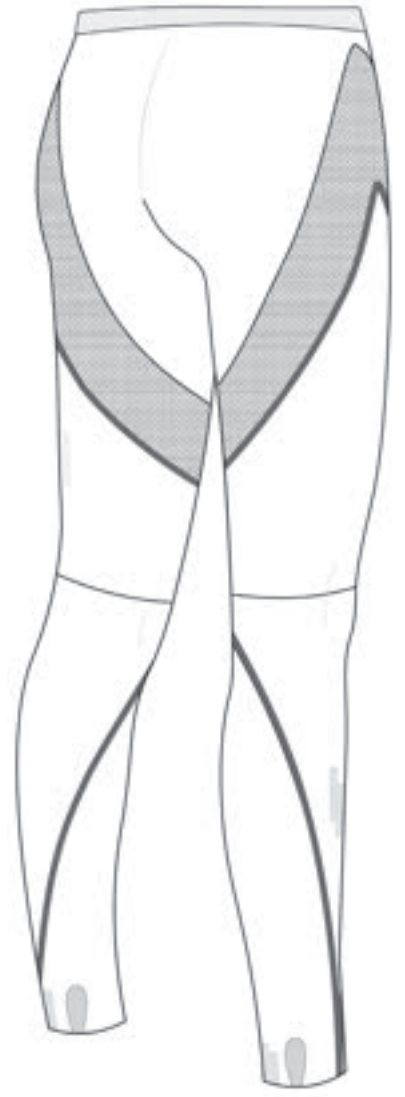
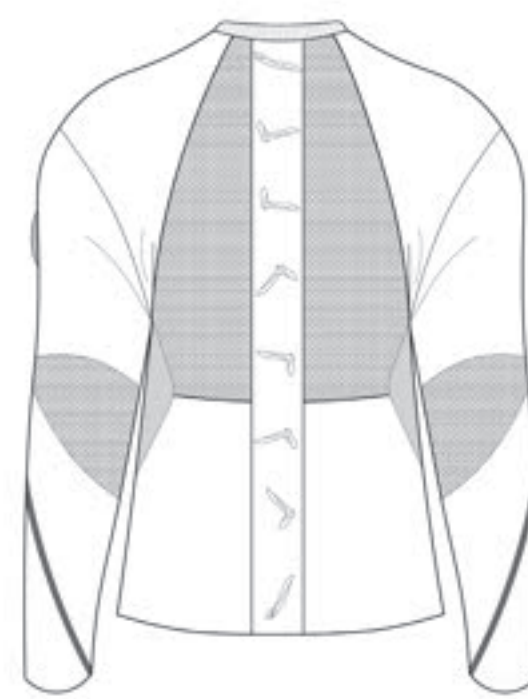
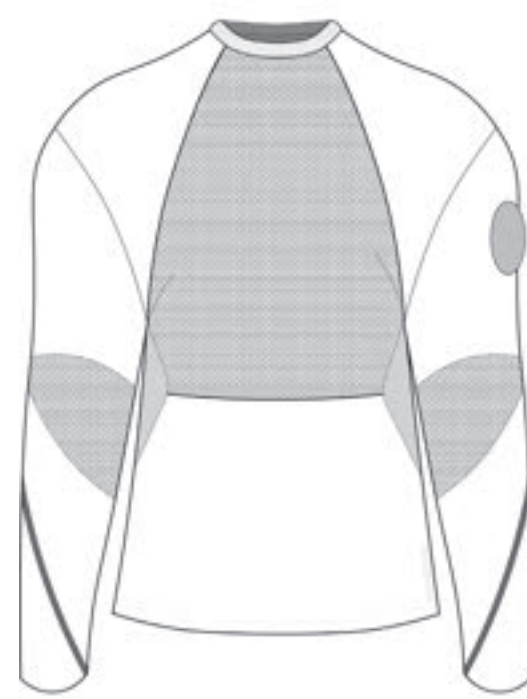
CORDURA® Classic Fabric across body and arms.

Commercial/Momento Bomber Jacket



Spacesuit Base Layer

Knitted in the round using lightweight and highly stretchable yarn - Polyester Yarn from SIOEN Spinning  
Perforated sections allowing the base layer to be extra breathable

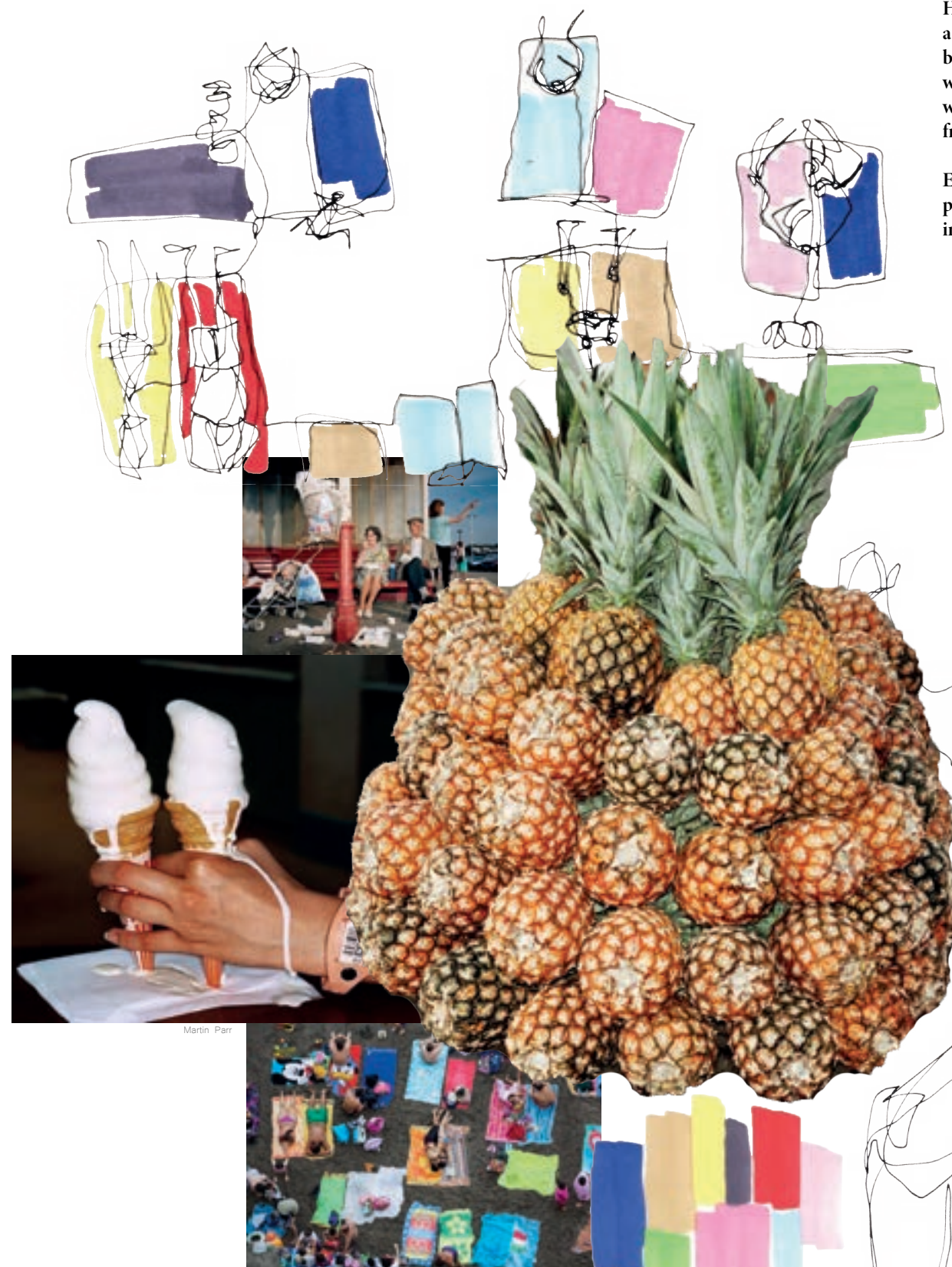




# The Tourist

Holidays. Sun. Heat. Ice Creams. Beach Towels. Sunscreen. Overcrowding. Rubbish. Being a tourist has two sides; enjoying a beautiful sunny climate and relaxing and endangering the balance of the local environment. Tourism causes disturbances to wildlife and reduction of wild areas. People often buy cheap disposal plastics such as sandcastle bucket and spade set while on holiday. To counter the uses of single-use plastics, this project uses acrylic sourced from Green Cast which is produced from recycled acrylics and can be recycled afterwards.

Exploring Martin Parr's hyper realistic photography of seaside holidays and David Stewart's photography exploration of the strangeness of everyday life, people, and pop culture have informed the collections colours, patterns, and silhouettes.



Iconic Puzle bag



Founded in 1846 as a collective of artisans dedicated to leather making and focus on traditional craft

Can be seen in all LOEWE collections

LOEWE x Sustainability  
 ↳ Combining craft with new research & technology to lessen impact.  
 ↳ Use low quality & low impact materials  
 ↳ Source from certified sources & companies  
 ↳ Refold, recycled to re-think and re-use complex material from previous collections.



Clients:

- > 25-34 year olds
- > Predominantly women but also men
- > Youthful, playful, alternative.
- > Madrid, Tokyo, Milan, Hong Kong, Miami, Las Vegas
- > People who like non-main stream hobbies eg Studio Ghibli = Howl's moving castle collection by LOEWE
- > relaxed, everyday with a flare!
- > Quirky details keep clients returning

"Craft is the essence of LOEWE."

- ↳ knit, leather, embroidery would hit her collar
- > Spain, Madrid
- ↳ Artisans + master artisans work to create modern objects of desire

Creative director 2013 to current Jonathan Anderson (2019)

- ↳ sit alongside luxury such as Louis Vuitton
- ↳ Bottega Veneta
- ↳ Prada
- ↳ Hermes

t-shirt looks 20  
 ↳ new version of a t-shirt  
 ↳ messes with depth perception



Molded bodices wider about taking of space?

Fiberglass Antlerium using technical fabrics commonly found in the automotive industry



Blouse trousers rework

Inserted foam/padding distorts the body.

All popular Bag shapes in collection

Paula's Boutique SS21 by LOEWE + Paula's Ibiza 2023 by LOEWE

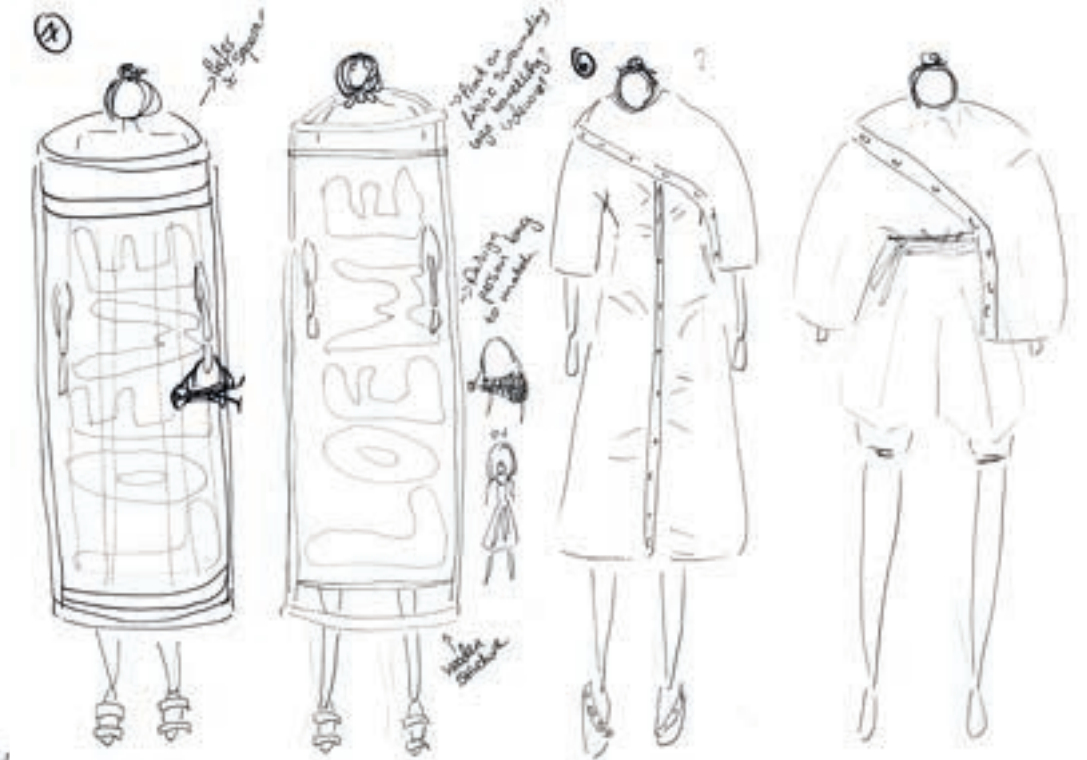
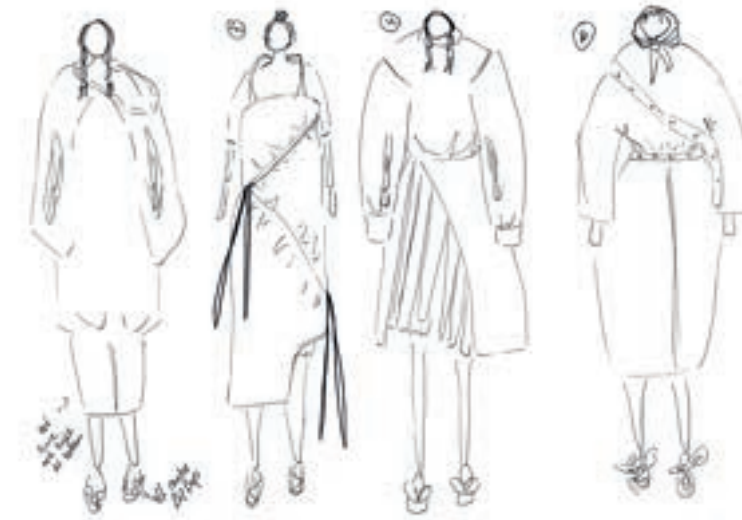
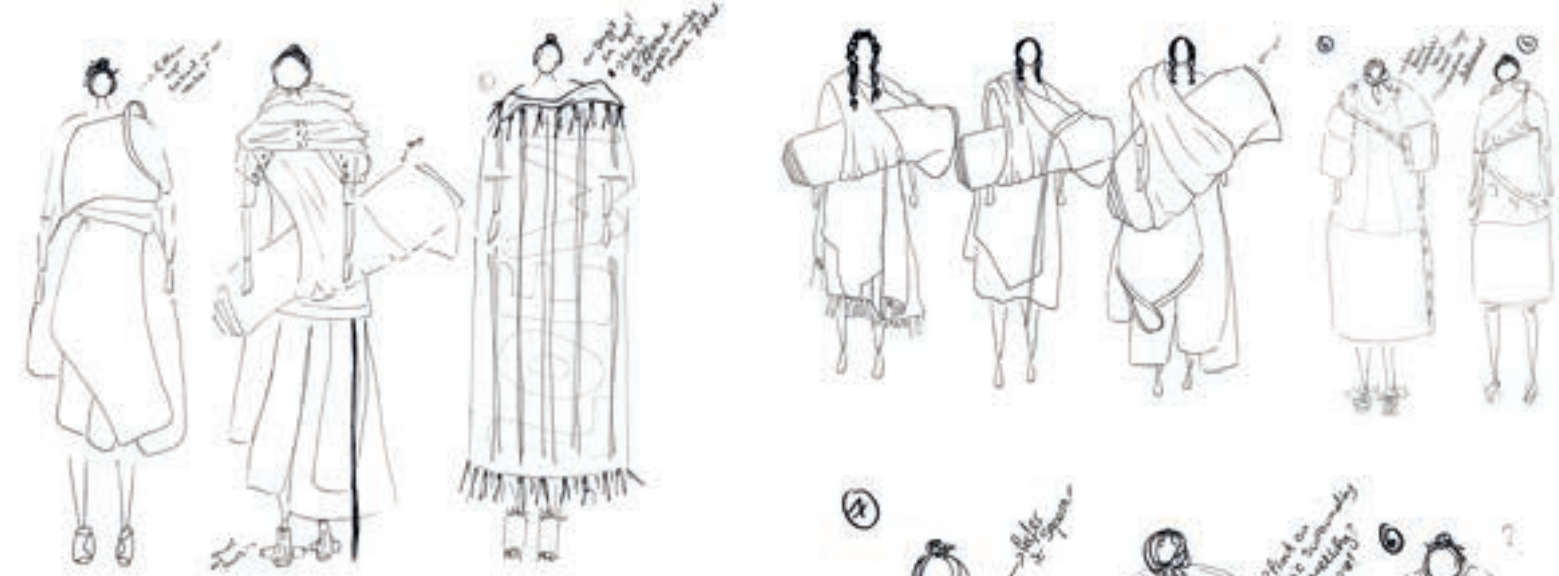
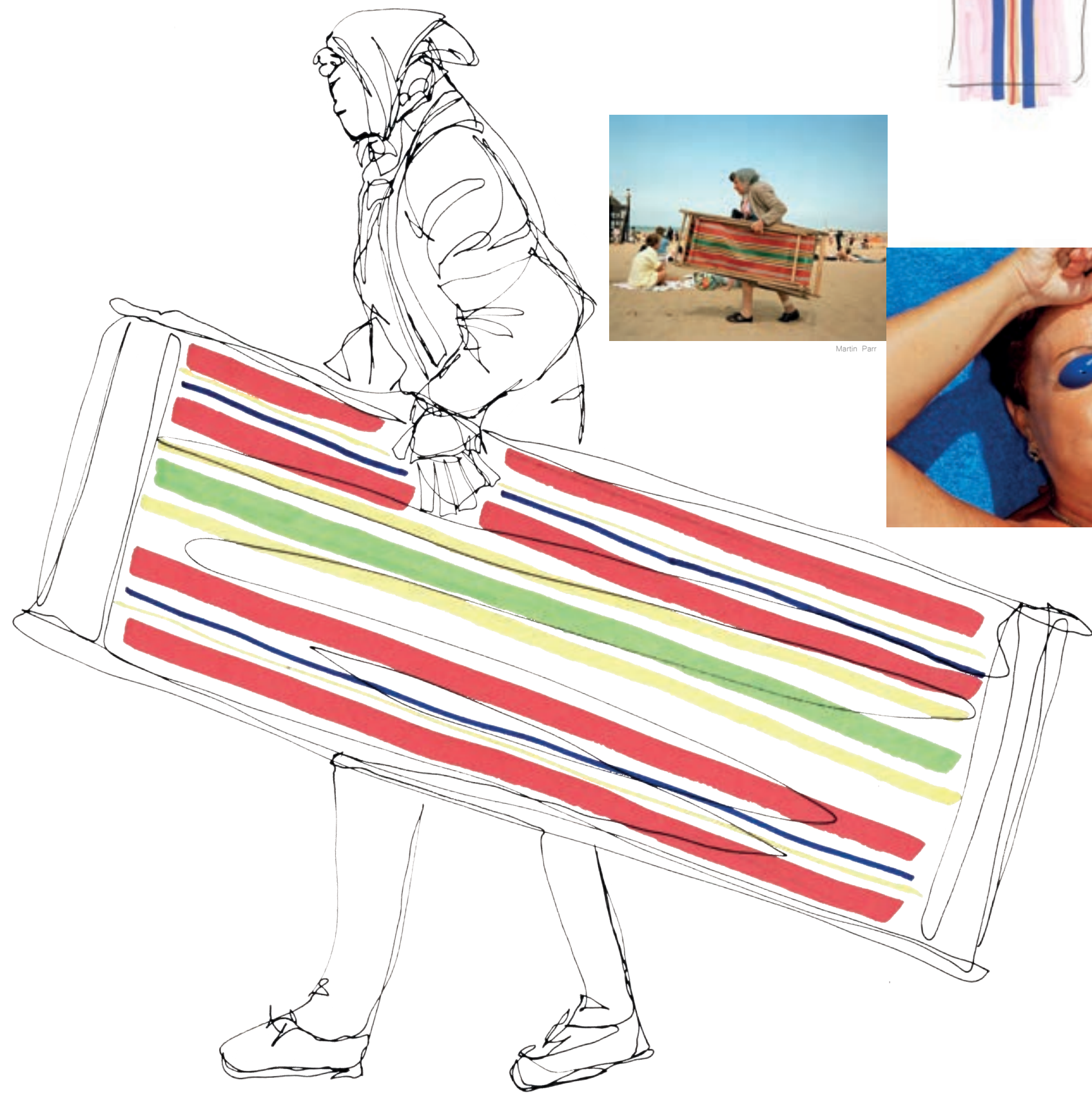


- ↳ Bold prints
- ↳ Dresses + shorts + short sleeve shirts
- ↳ traditional beach-wear
- ↳ Matching items cotton or silk?
- ↳ Jersey
- ↳ inspired beach bags
- ↳ Oversized
- ↳ image prints



# LOEWE X AMELIA BROWN









David Stewart



Green Cast (Trademark)- 100% recycled and recyclable cast acrylic sheets.

75% Cotton 25% Polyamide Boucle Yarn, 10gg.





