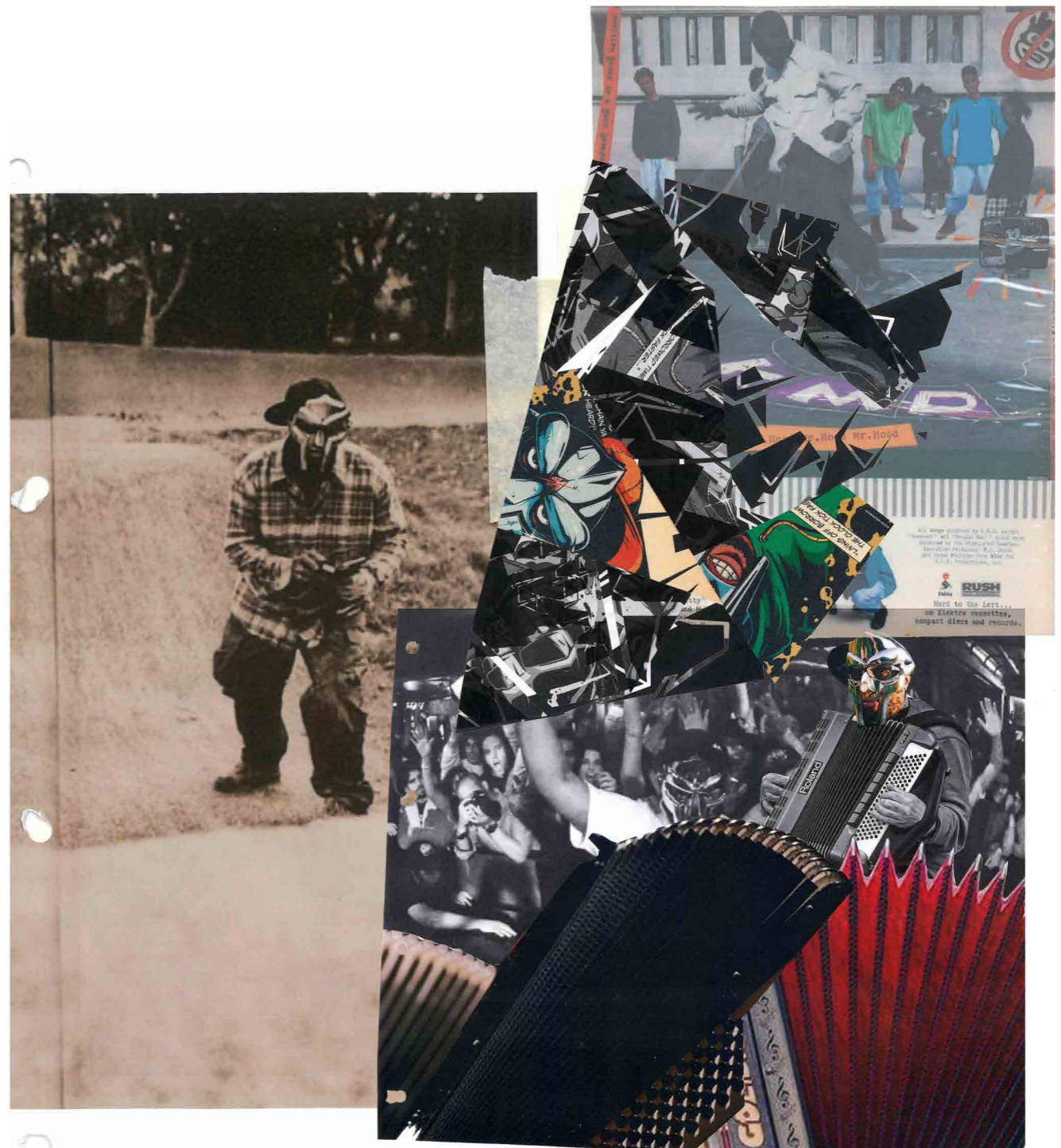


## TAKE ME TO YOUR LEADER

'Take Me To Your Leader' is a sustainable, sportswear collection based on rap legend, MF DOOM. I took inspiration from his witty lyricism, comic book villain persona, and desire for privacy and anonymity. His famous metal mask influenced use of armour and hoods in my collection (protection of the identity), as well as referencing to superheroes and villains. I developed prints using collaging techniques of comic books and pieces I created myself, using mixed media and mark making.



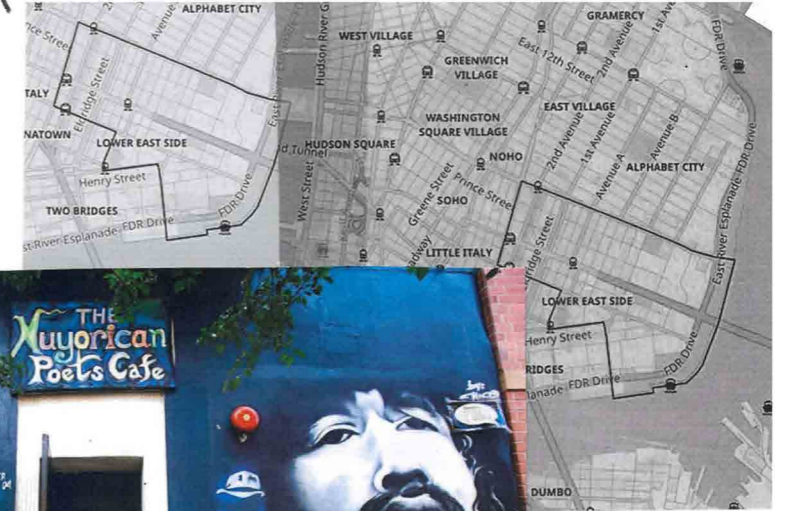
*It's your first and last step to getting played like an accordion.*

First persona  
= Zev Love  
X

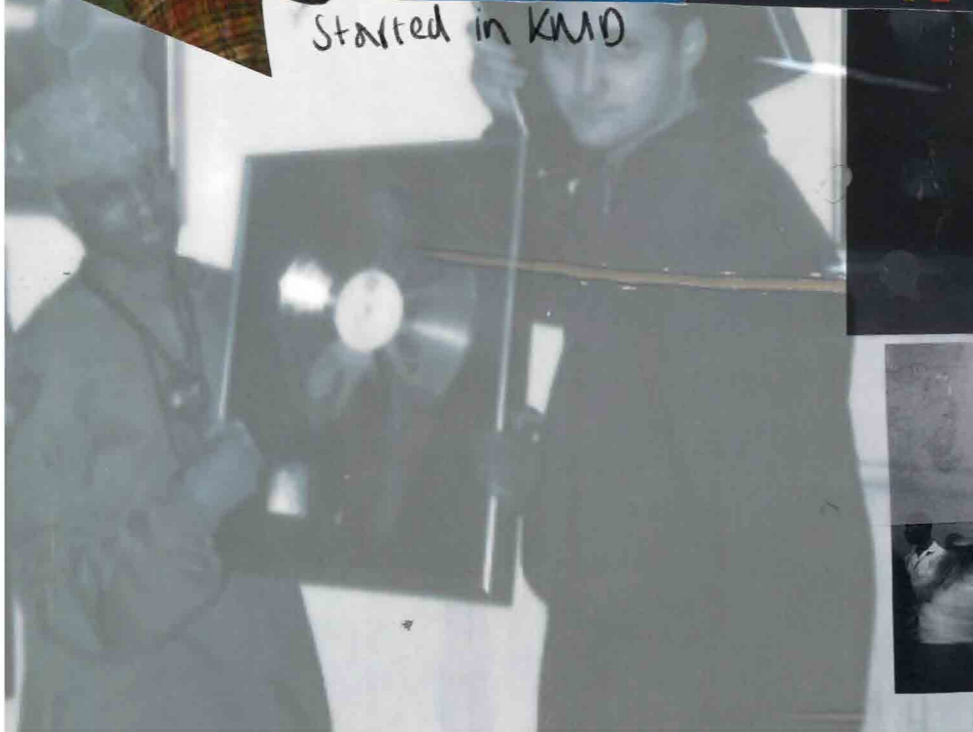


MNSCA/Mask

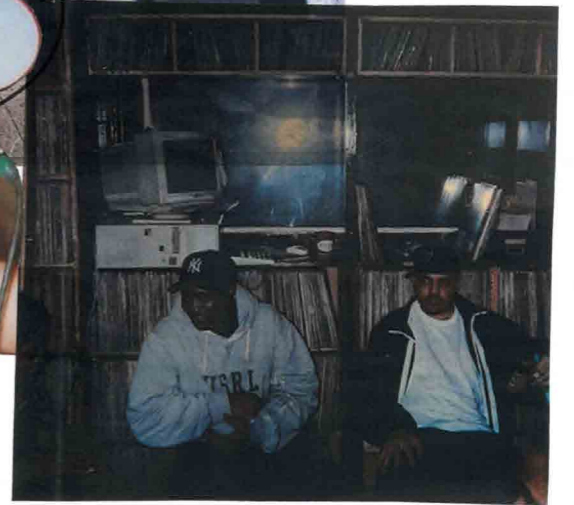
Early career - 1st solo venue



Started in KMO

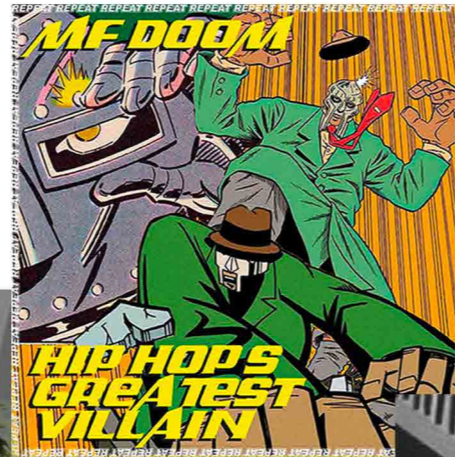


Tights as mask





Imposters used at show to reinforce villain character



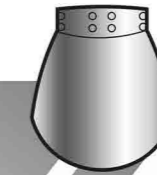
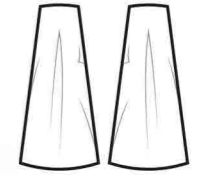
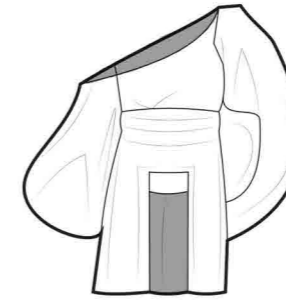
Comic book references in music videos, artwork etc.



There are many reasons behind DOOM's famous mask. Dumile wanted to create anonymity and add to the mystique of his villain character, who didn't care about the fame, but more about the message he conveyed. He wanted to appeal to the hip-hop world, who cared more about the message they sounded like. The original mask was inspired by the film *Gladiator* (2000).



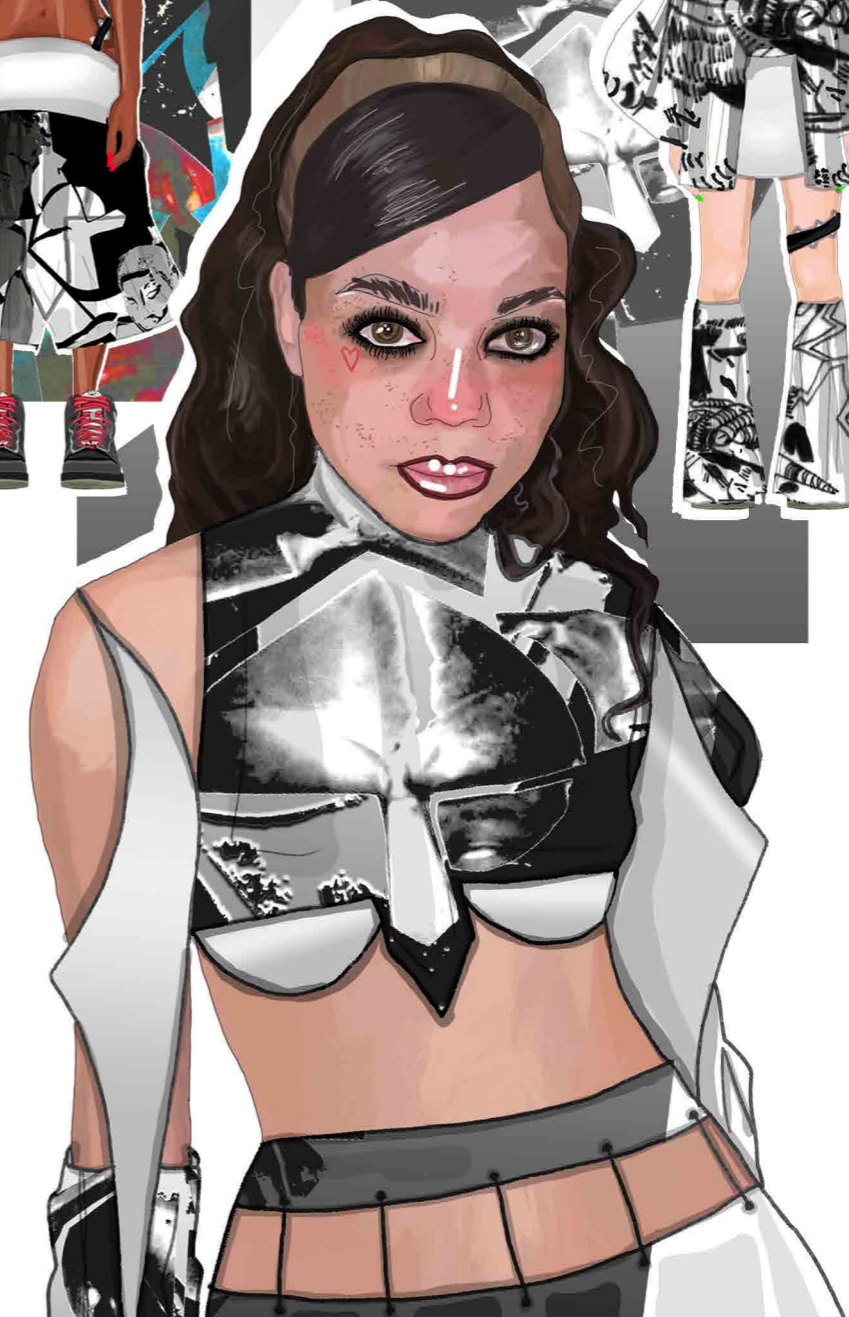
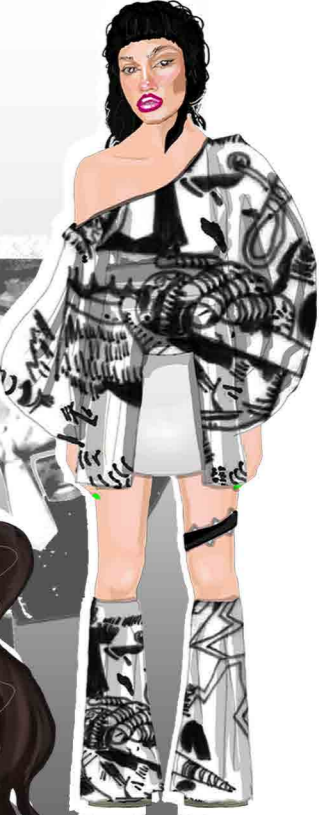
MF DOOM based on Fantastic Four villain 'Doctor Doom'



shape of mask to create offnew

collage

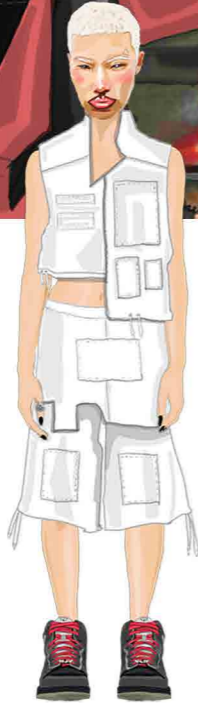
spiked metal belts



Album Artwork = Print & Shape



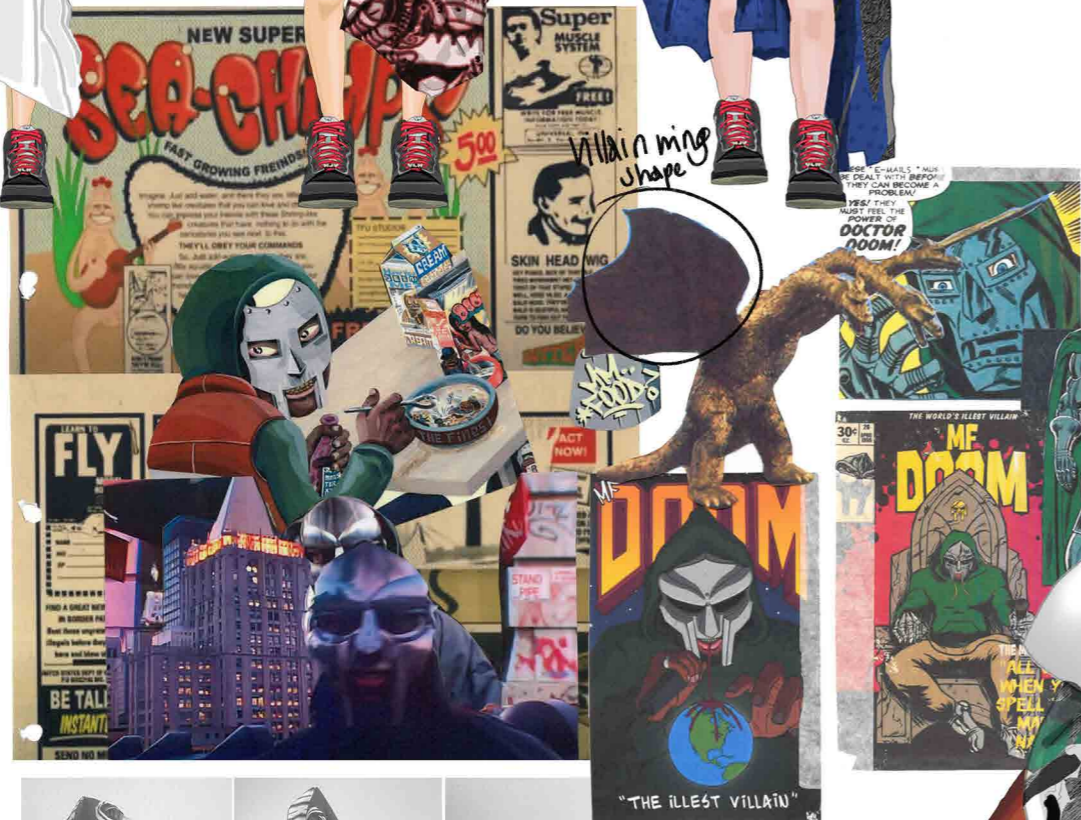
Sketchwork and collage looking at geometric shapes



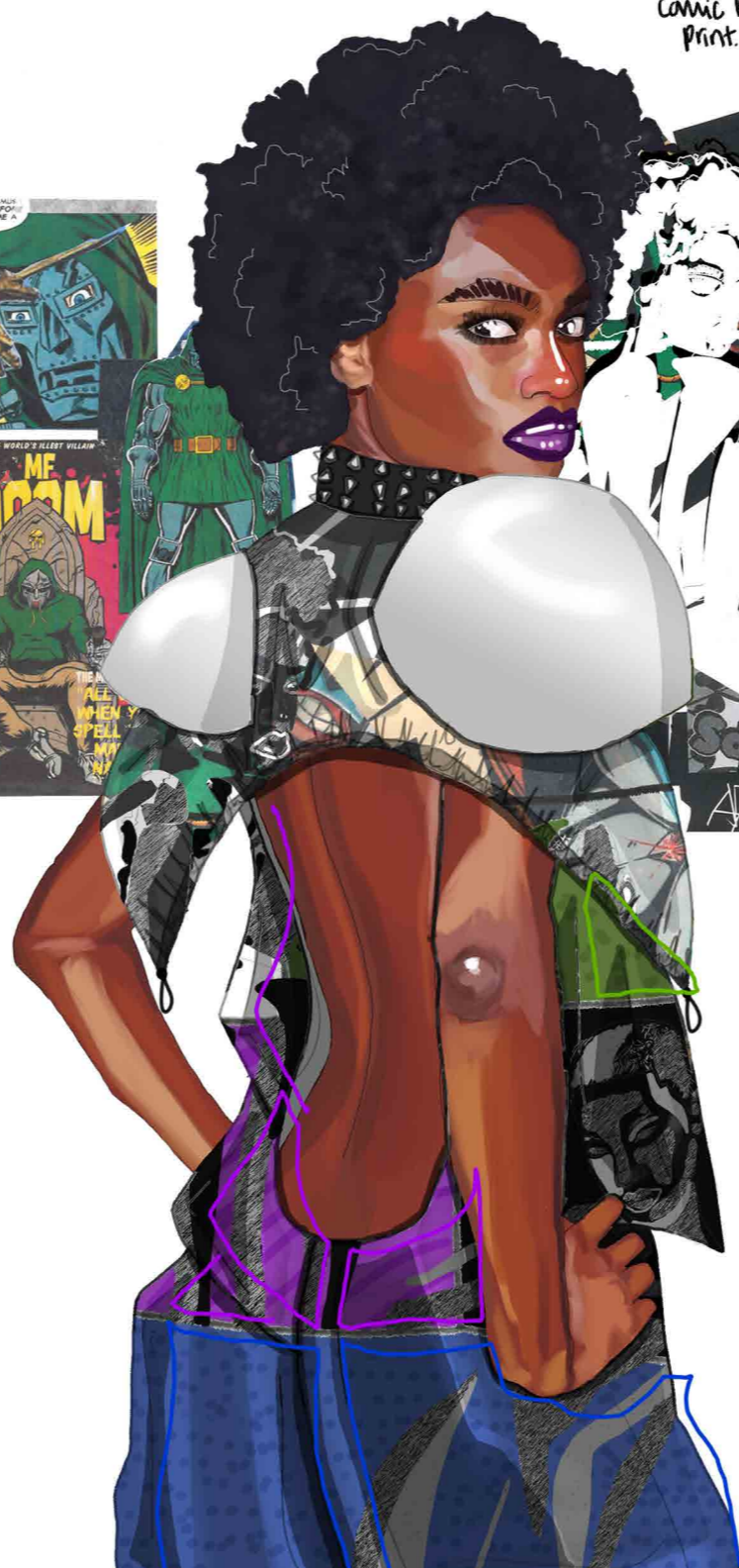


Fabric Samples

Mixed Media  
Comic book  
Print.



Villain mix  
shape



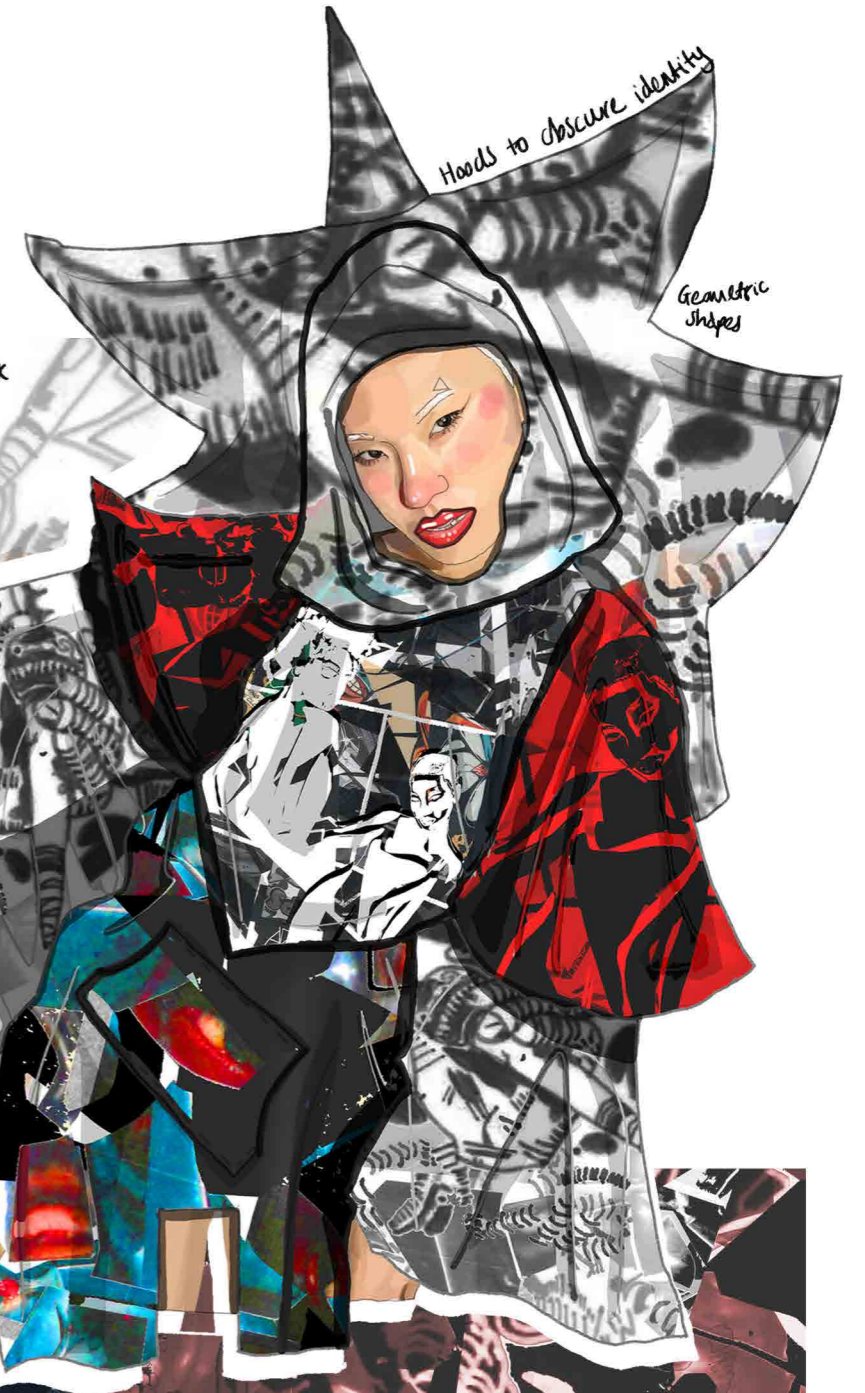
standmark draping to create caped



Standard exploring how face could be obscured



Print from album artwork



Hoods to obscure identity

Geometric shapes



Tailor fit



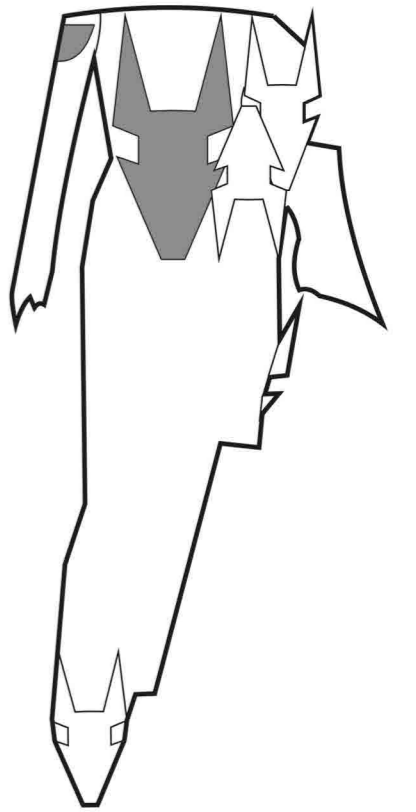
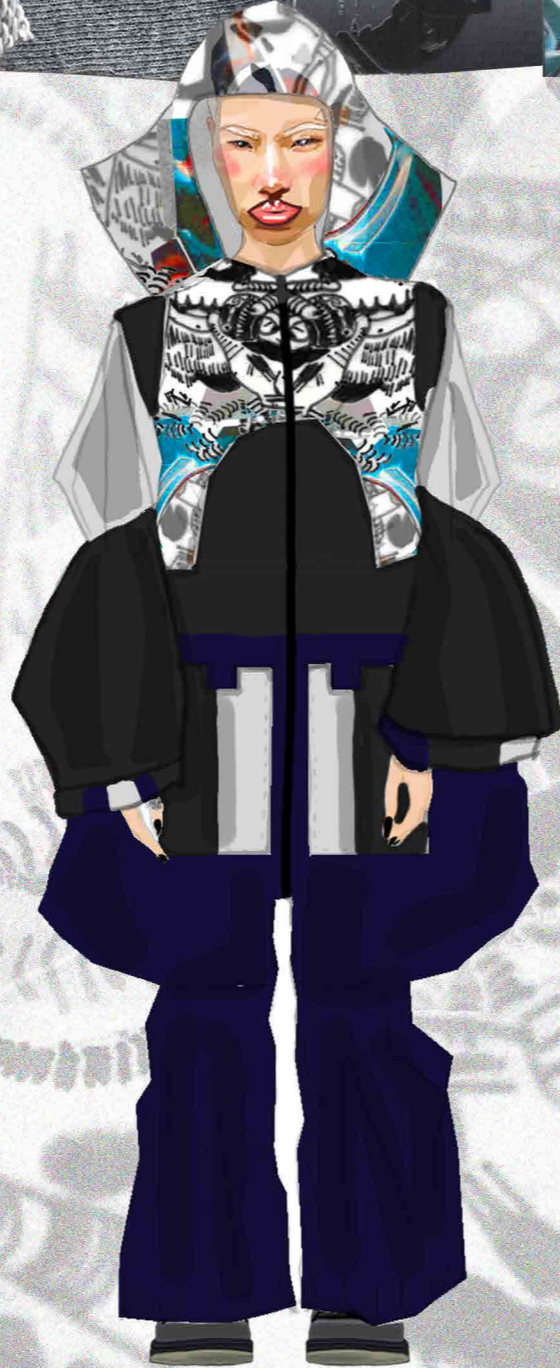
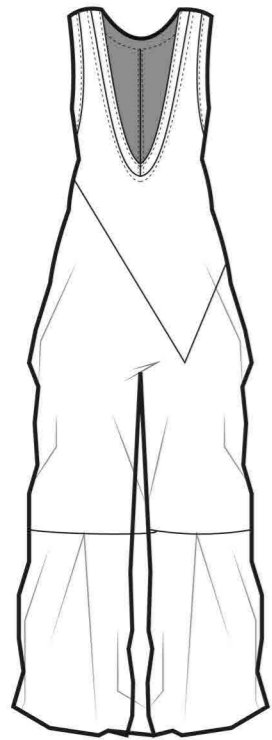
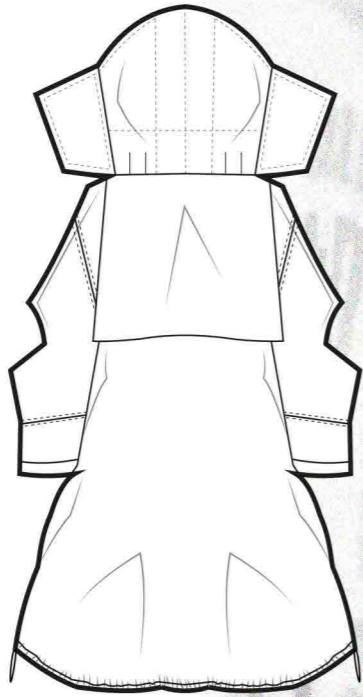
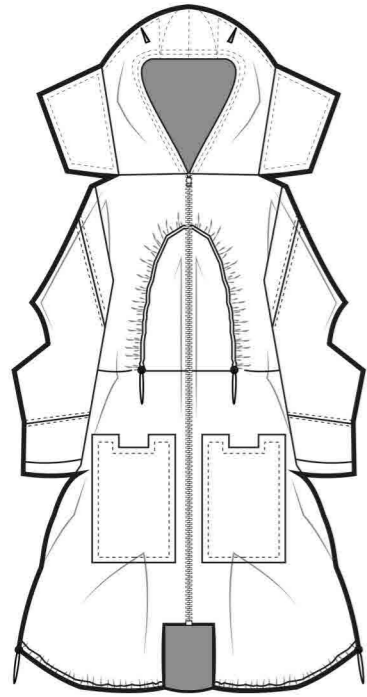
Privacy & Anonymity



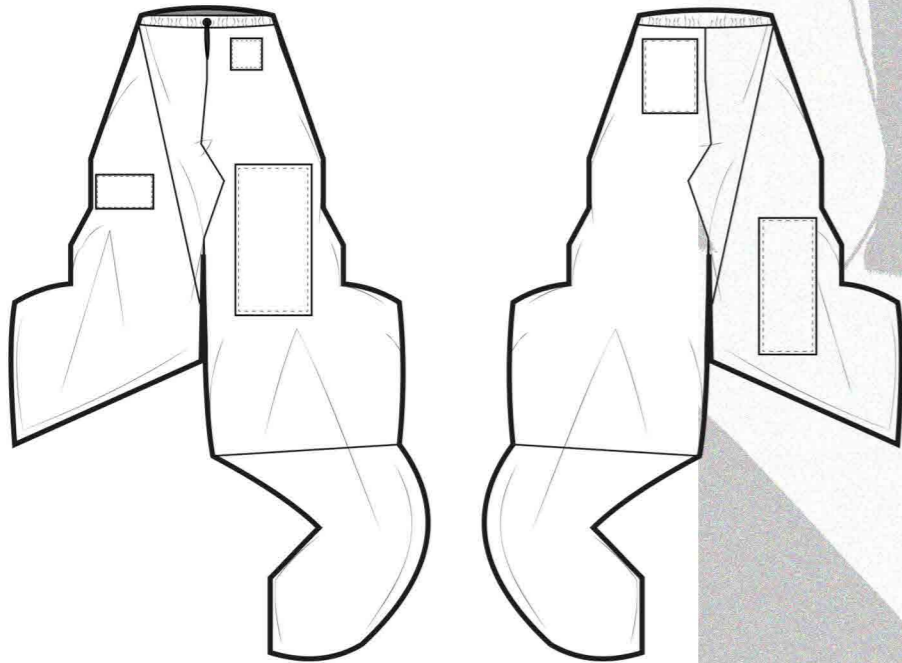
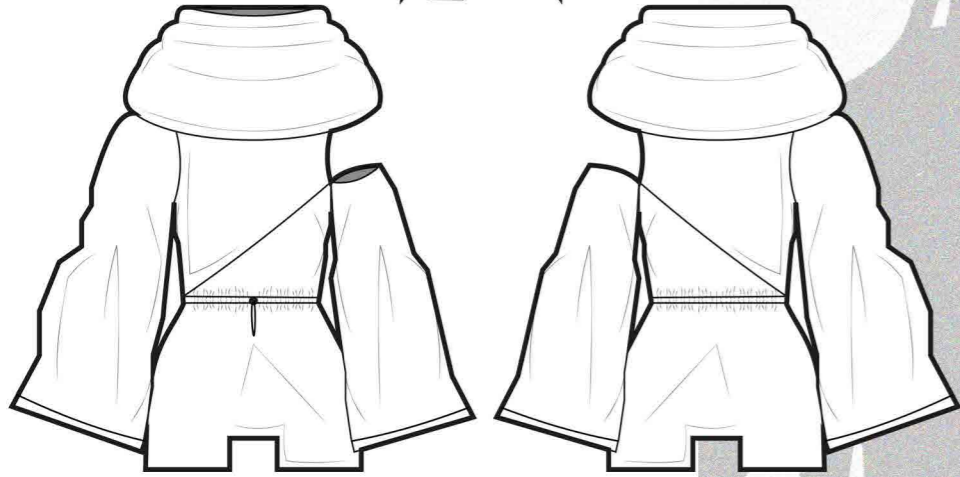
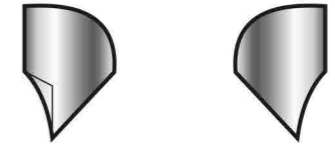
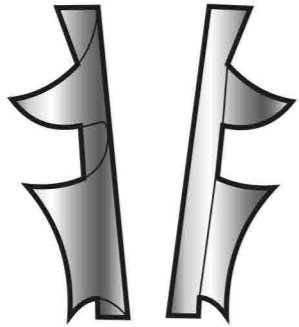


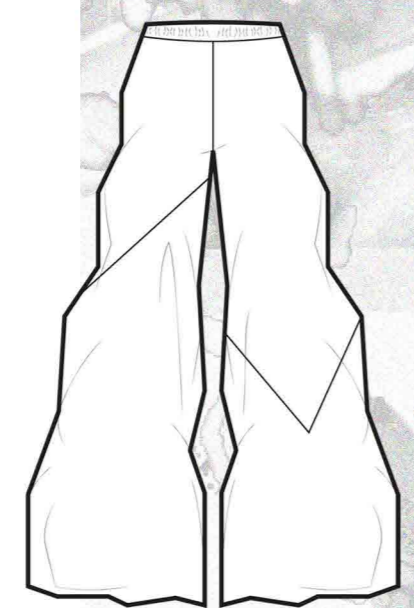
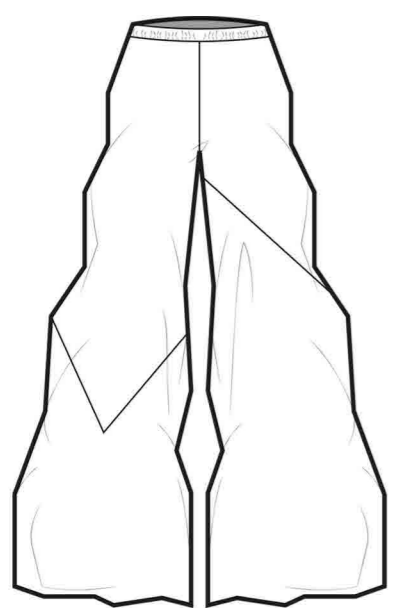
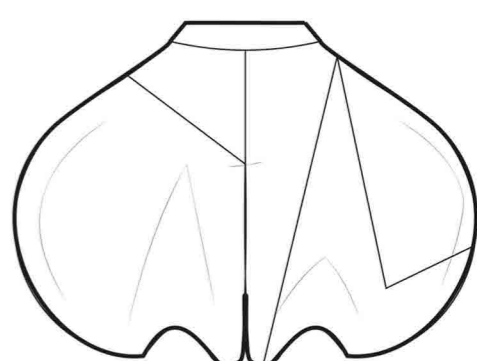
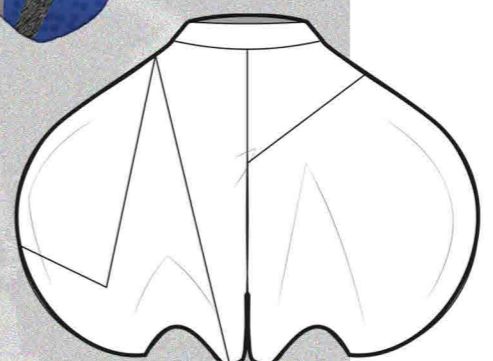
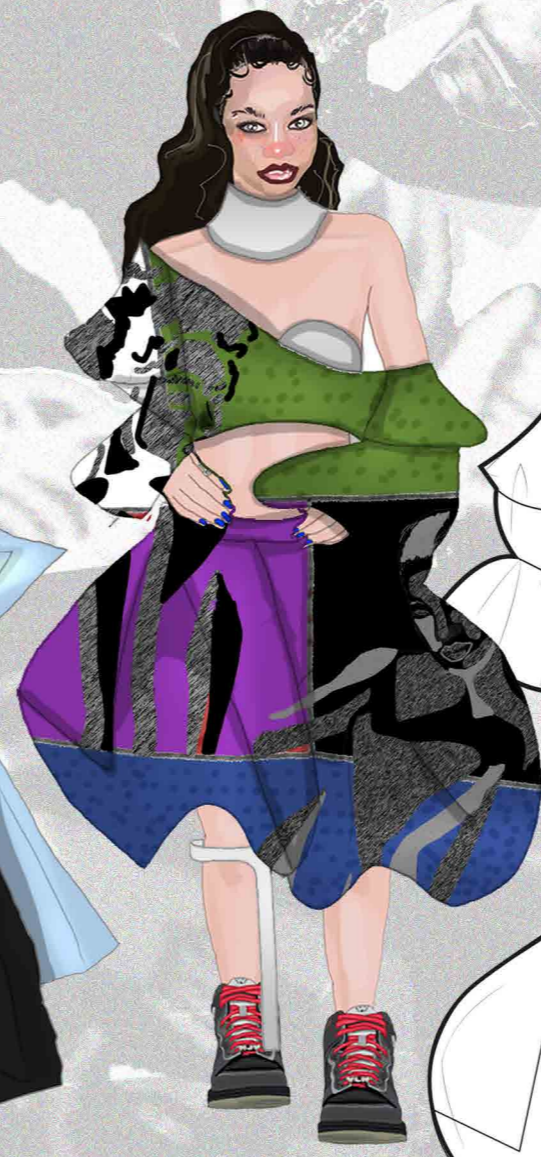
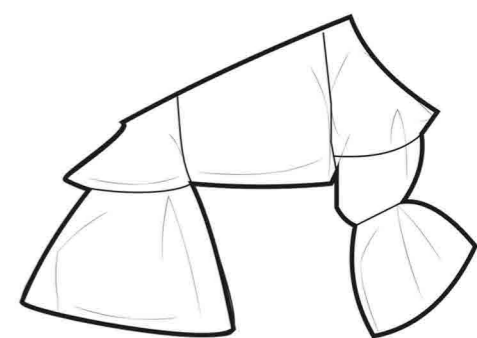
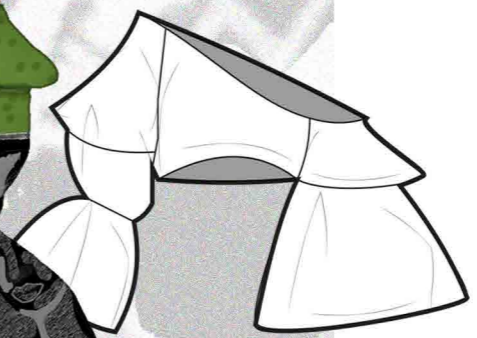
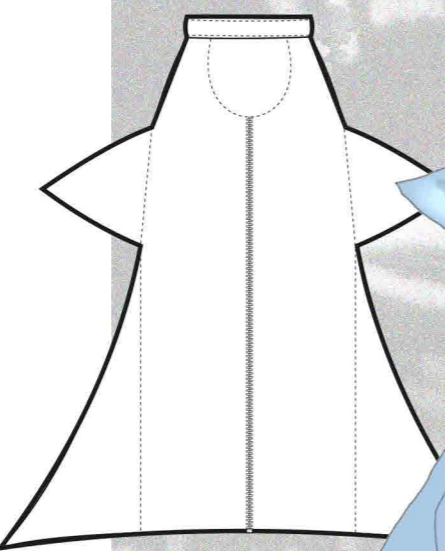
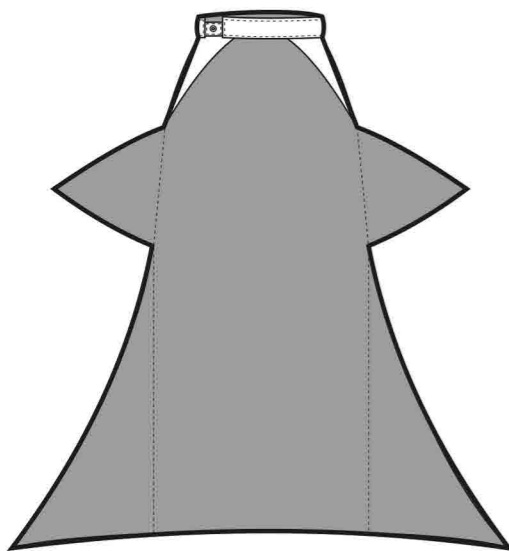
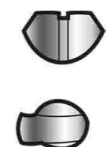
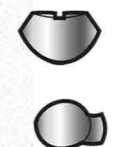
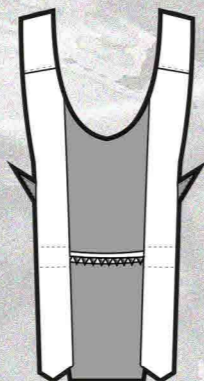
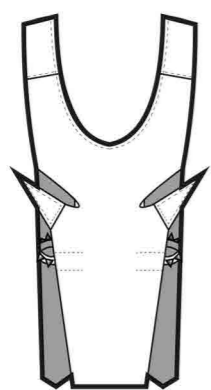
TAKE ME TO YOUR LEADER



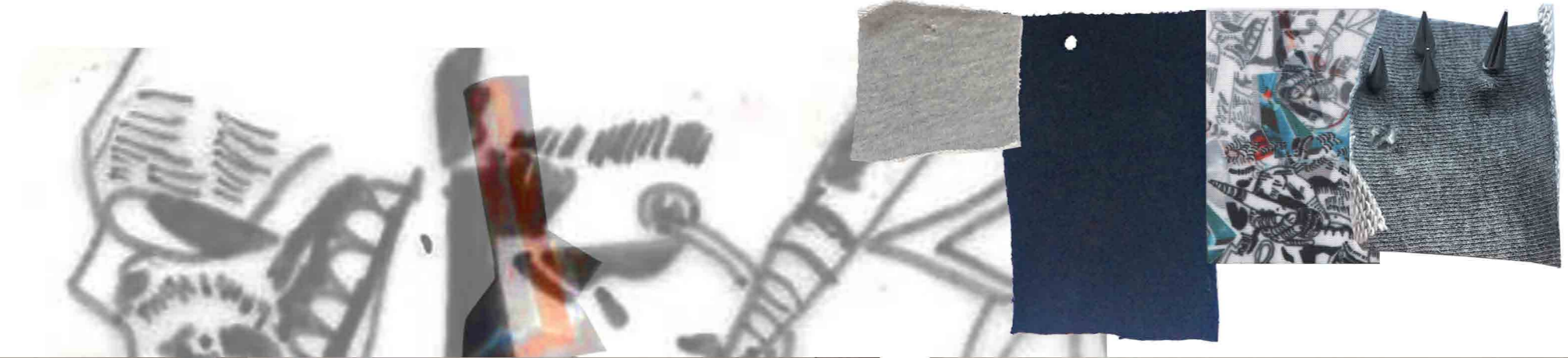


# FRAGILE





FINAL LOOK 1



# FINAL LOOK 2

