



HIGH TIDES

By Caitlin Garry

AN AUTUMN/WINTER 2024 KNITWEAR COLLECTION FOCUSING ON PRESERVING AND PROTECTING THE NORTH EAST COASTLINE. INITIALLY INSPIRED BY THE DESTRUCTIVE EFFECTS HUMANS HAD ON OUR COAST, I WAS INSPIRED TO FOCUS ON SUSTAINABILITY, LOOKING AT THE TEXTURES AND COLOURS OF THE NORTH EAST, MAKING MY COLLECTION EARTHY AND SCULPTURAL.

THIS PROJECT PERSONALLY CONNECTS TO ME, GROWING UP IN THE NORTH EAST, MAKING MANY MEMORIES WITH FAMILY AND FRIENDS ON THE COAST.

I WILL MAKE MY COLLECTION 100% DECOMPOSIBLE, USING NATURAL YARNS SUCH AS COTTON, LAMBSWOOL & MERINO POLO ALL SUPPLIED FROM LOCAL SUPPLIERS, MINIMISING MY CARBON FOOTPRINT.

CONTACTS:

EMAIL: CAITLINGARRY498@GMAIL.COM

LINKEDIN: CAITLIN GARRY

INSTAGRAM: CAITLINGARRY_FASHION

REINVENTING THE CLASSICS



HISTORICAL GARMENTS



FISHERWOMEN



Tynemouth

Long Sands

Whitley Bay

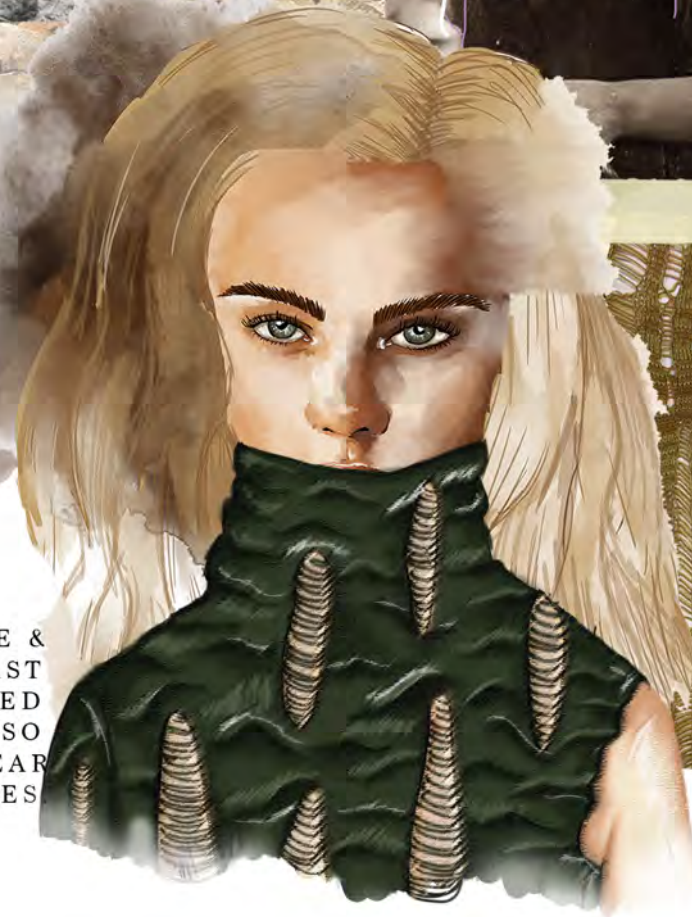


BIODEGRADABLE YARNS



EXPLORING THE NEED TO PRESERVE & PROTECT THE NORTH EAST COASTLINE THROUGH TEXTURED KNITTED PIECES. WHILE ALSO COMBINING TRADITIONAL OUTERWEAR KNITWEAR AND HISTORIC FEATURES

CONCEPT BOARD



TEXTURES & DRAPE



HIGH TIDES

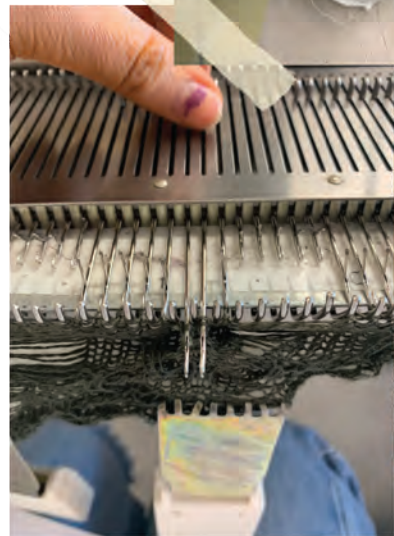
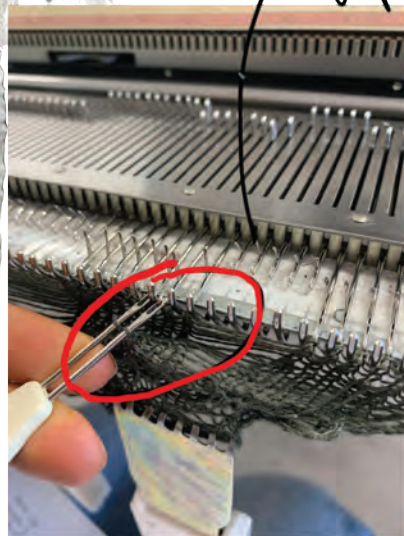
TOILING TO CORRECT SHAPING



FURTHER LOOK 2 DEVELOPMENT

NECK TOO WIDE - TAKE IN 5CM WIDTH EACH SIDE

picking up stitches



FRONT PIECE KNITTED

knitting the dress on the domestic machine



100% biodegradable whaka linen to hold the structure of the dress

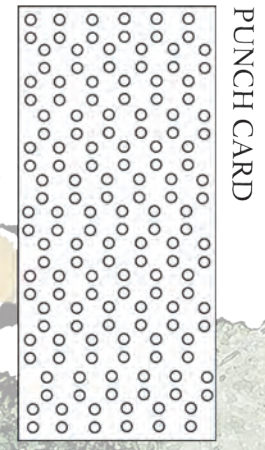


FINAL DRESS

HIGH TIDES

CREATING ACTUAL TOP I

CARRIAGE SET UP



PUNCH CARD

KNITTING THE TOP ON THE DOMESTIC MACHINE



PROCESS IMAGES:



want pocket to be slightly bigger

cut + sew hem to create curve

linking lambswool trim

Tension 6 - 8 Rows



lining side seam

Thinking about suspenders for added texture & pop of colour

sample is washed to felt the fabric & further blend the yarns

ORIGINAL SHAPE INSPIRATION FROM FISHERMAN AND WOMEN OVERALLS



INITIAL TOILE DEVELOPMENT



Initial shape development



SAMPLE WITH FINAL YARNS- TESTING BUCKLE ATTACHMENT



LOOK 2 TOP I TECHNICAL DEVELOPMENT



FINAL CONSTRUCTION

HIGH TIDES

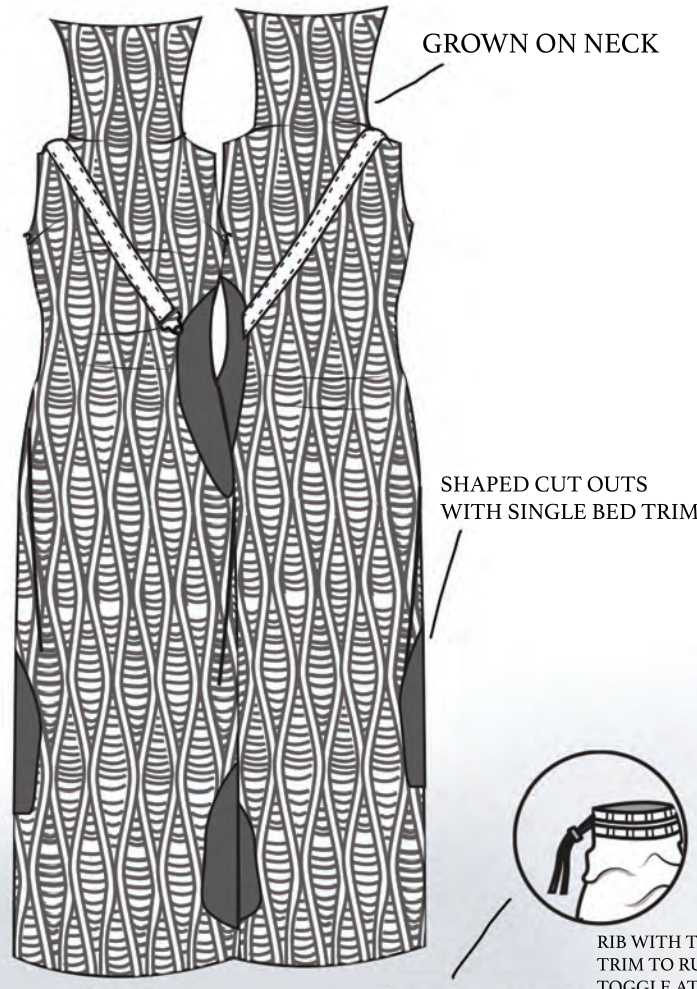
HIGHTIDES



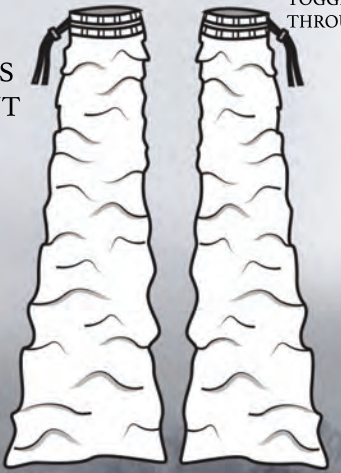
LOOK 3



LADDER & RACKING TECHNIQUE BODYCON DRESS

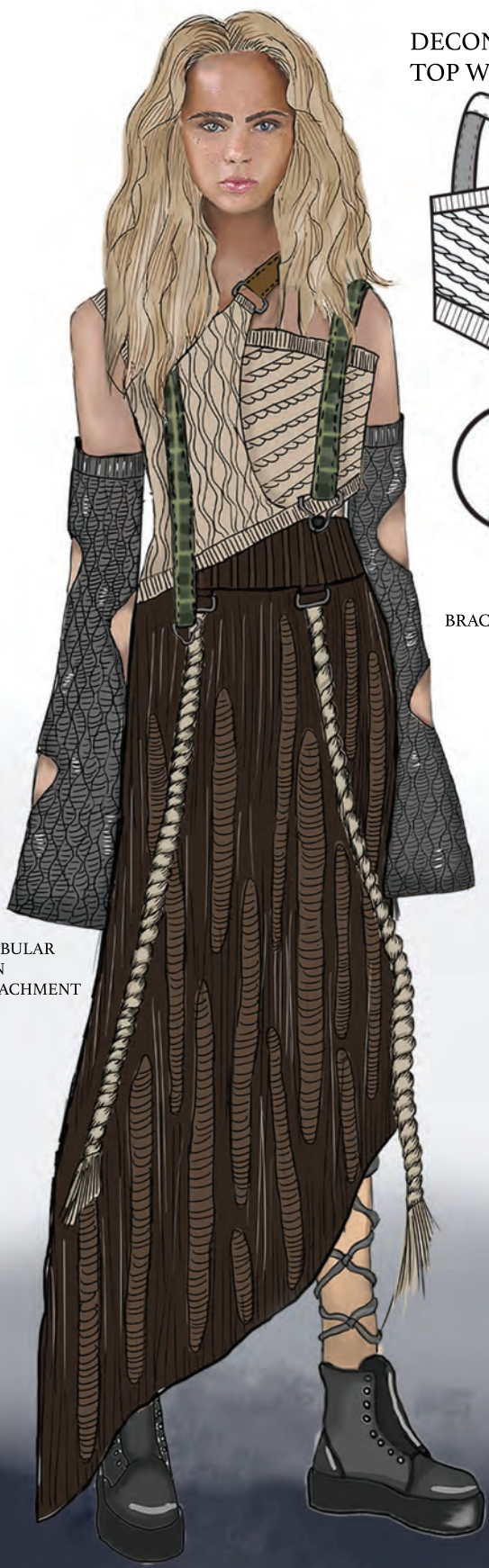


FINGERLESS GLOVES WITH TOGGLE ATTACHMENT

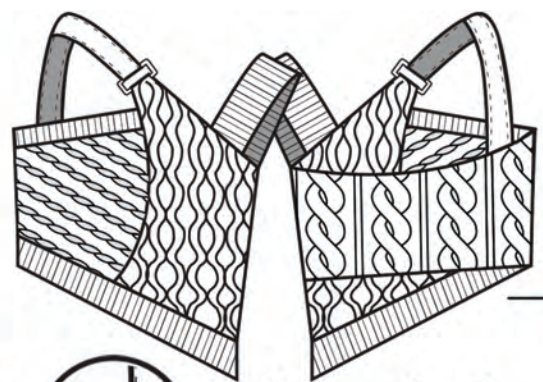


RIB WITH TUBULAR TRIM TO RUN TOGGLE ATTACHMENT THROUGH

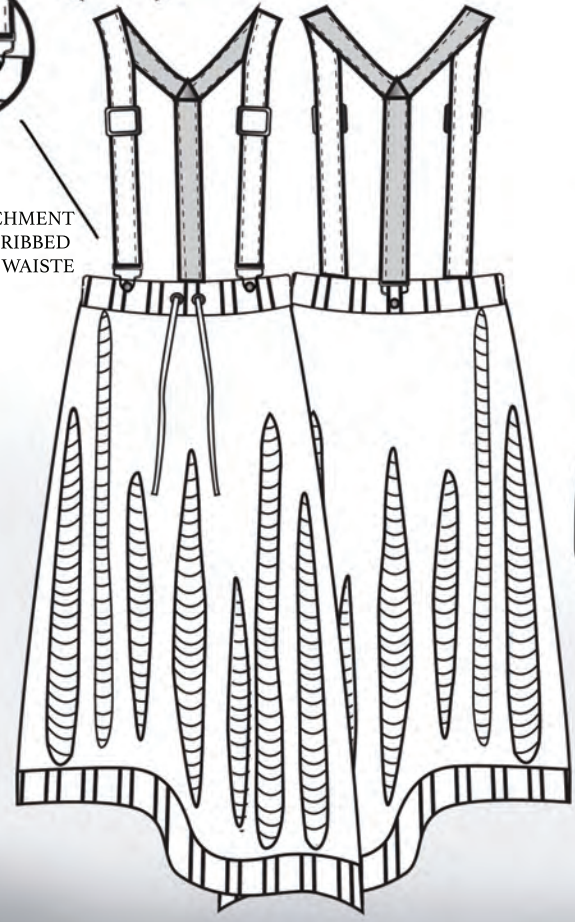
LOOK 4



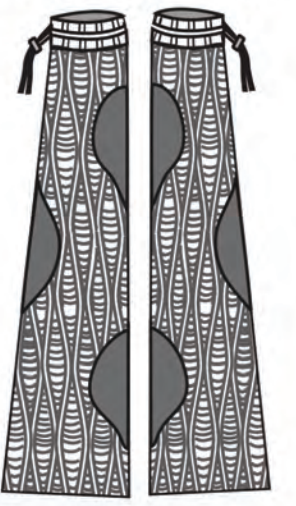
DECONSTRUCTED CABLE KNIT TOP WITH BRACE SHOULDER ATTACHMENT



BRACE ATTACHMENT TO 2:1 RIBBED WAISTE



FINGERLESS GLOVES WITH TOGGLE TRIM



SHAPED SECTIONS WITH SINGLE BED TRIM