



Collection Portfolio

Mariana Maass



Pier 24 is a collection inspired by travel and the thrill of exploration. As travellers are mesmerised by looking at everyday landscapes for the first time, they find the joy and beauty that we sometimes neglect in our daily lives.

As the collection draws inspiration from my travel photography and the exhibition "Accidentally Wes Anderson," it aims to invite the wearer to appreciate their surroundings. This optimistic outlook is reflected by the bright colour palette and carefully curated fabrics.

The collection also commemorates my grandfather's sense of pride and positivity in self-expression through clothing.



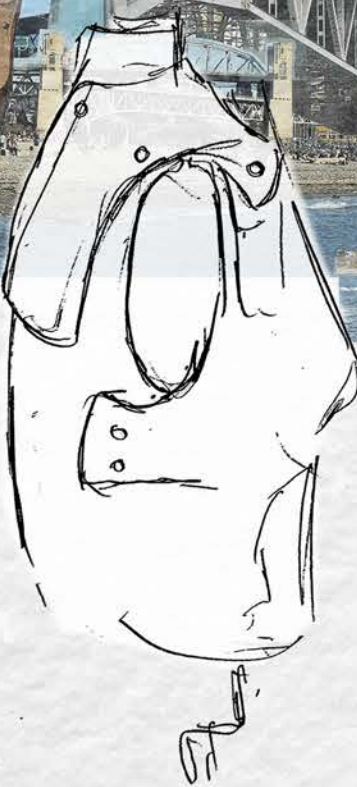
1950s Walking coat
Inside out



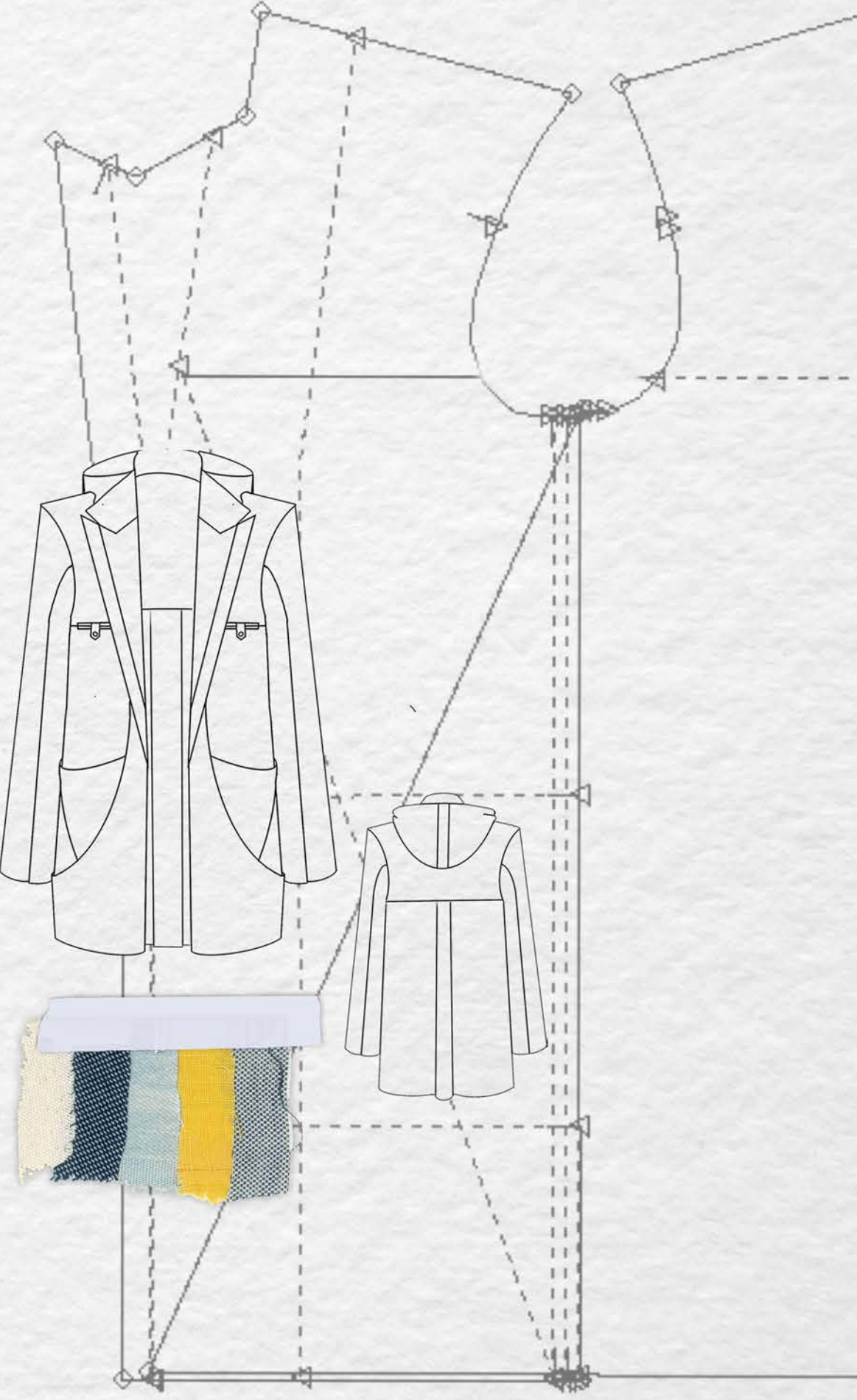
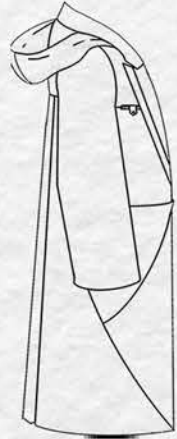
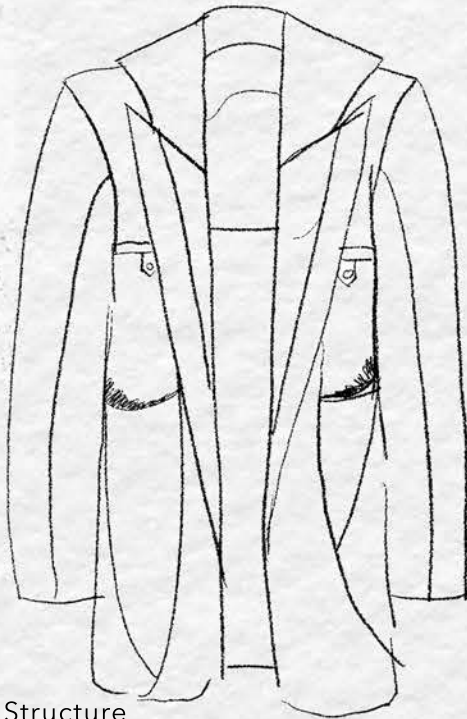
Wide Pockets

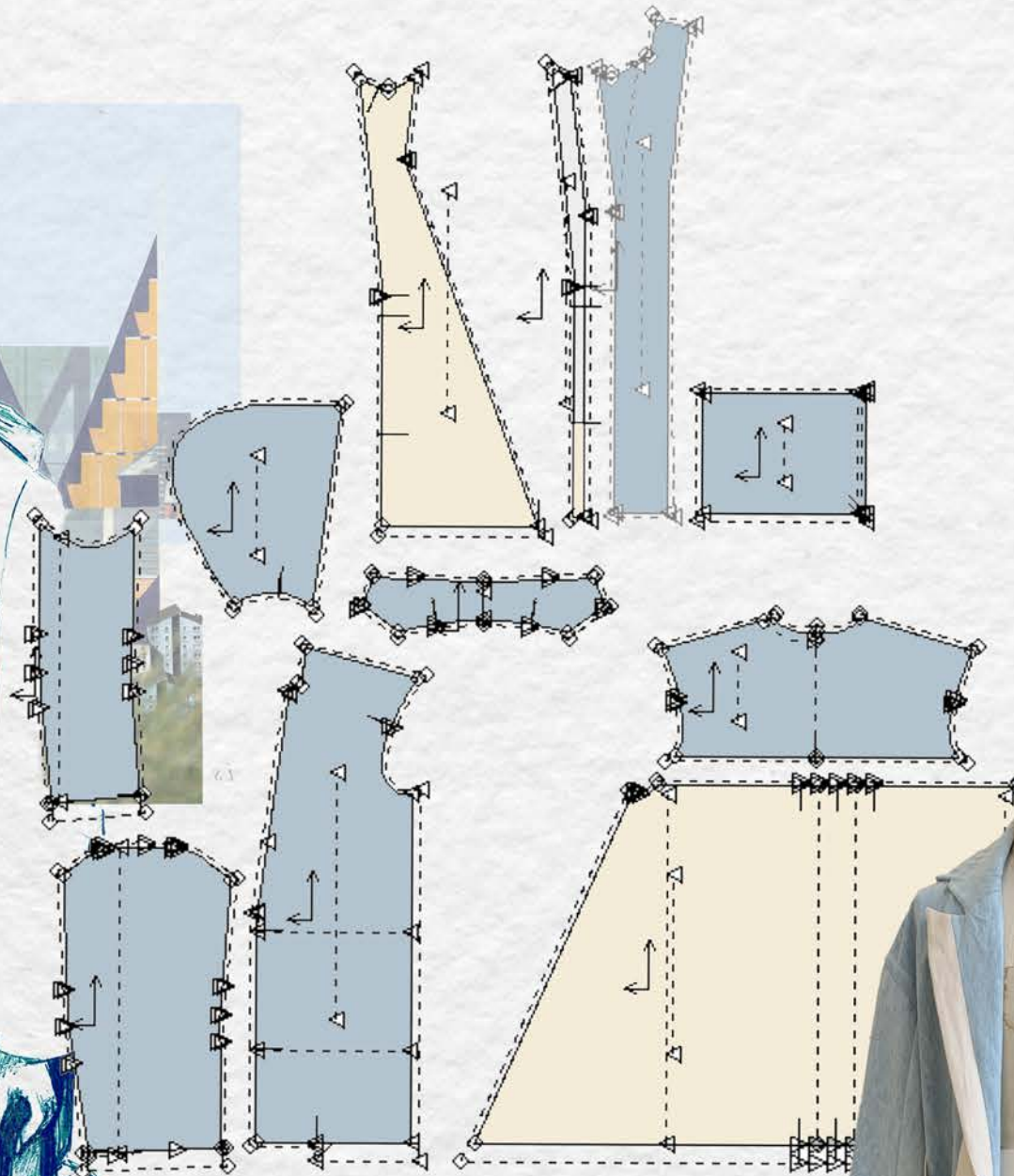
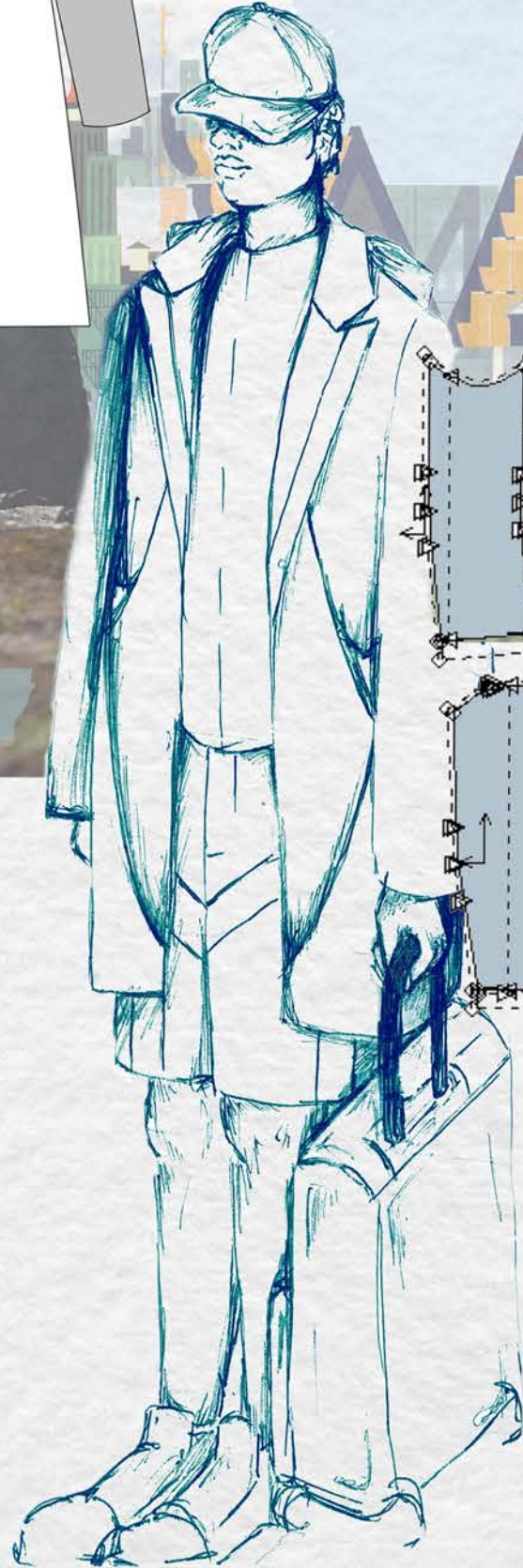
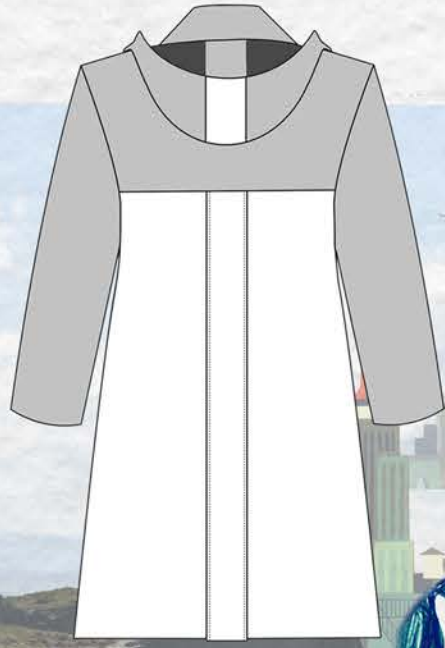


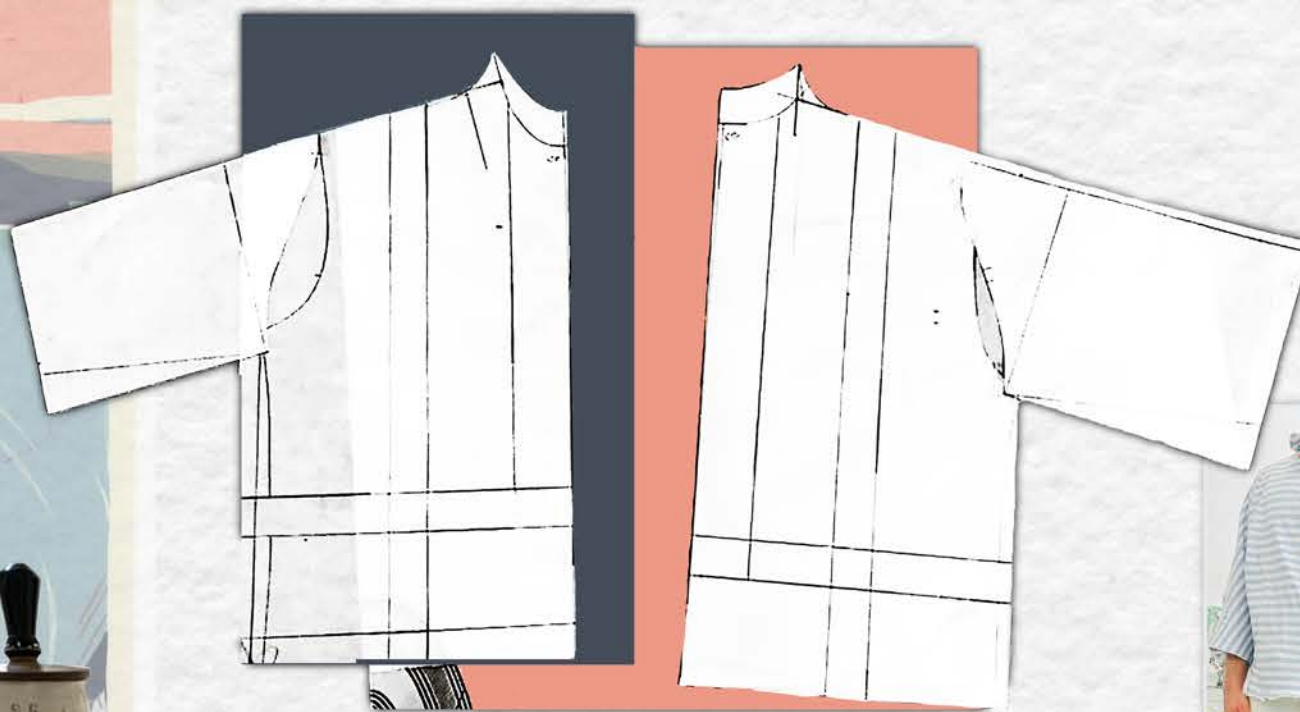
Pannels



Structure



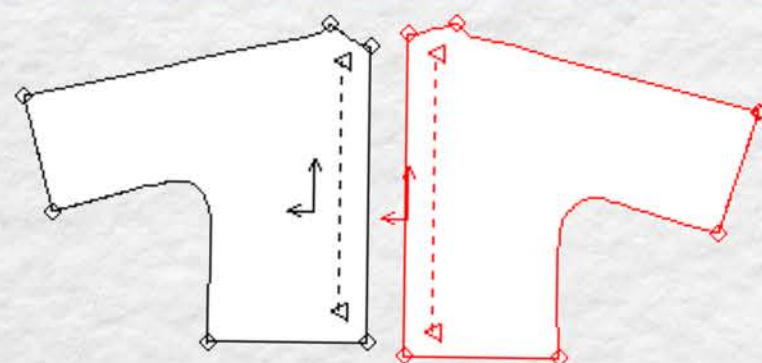




Jersey



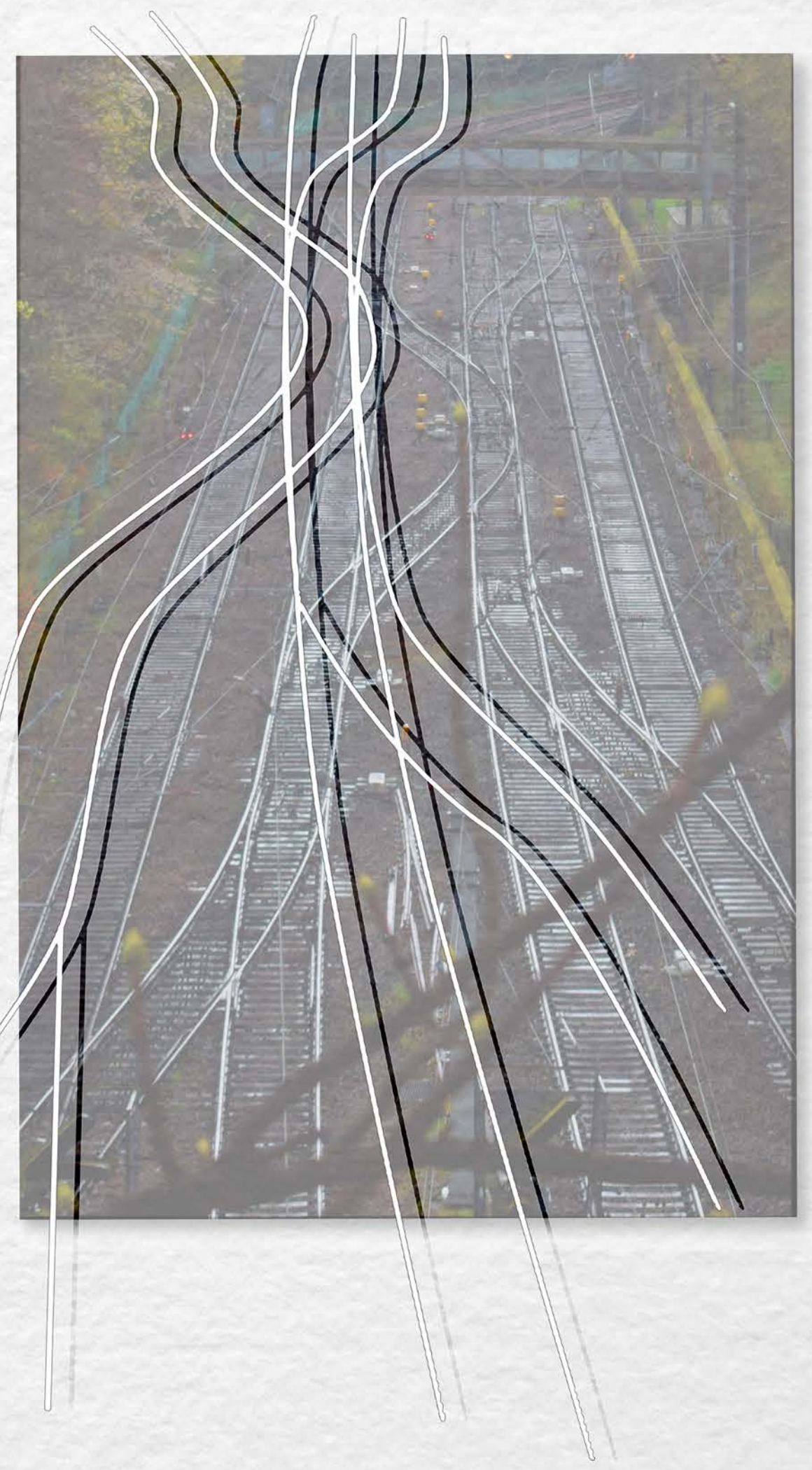
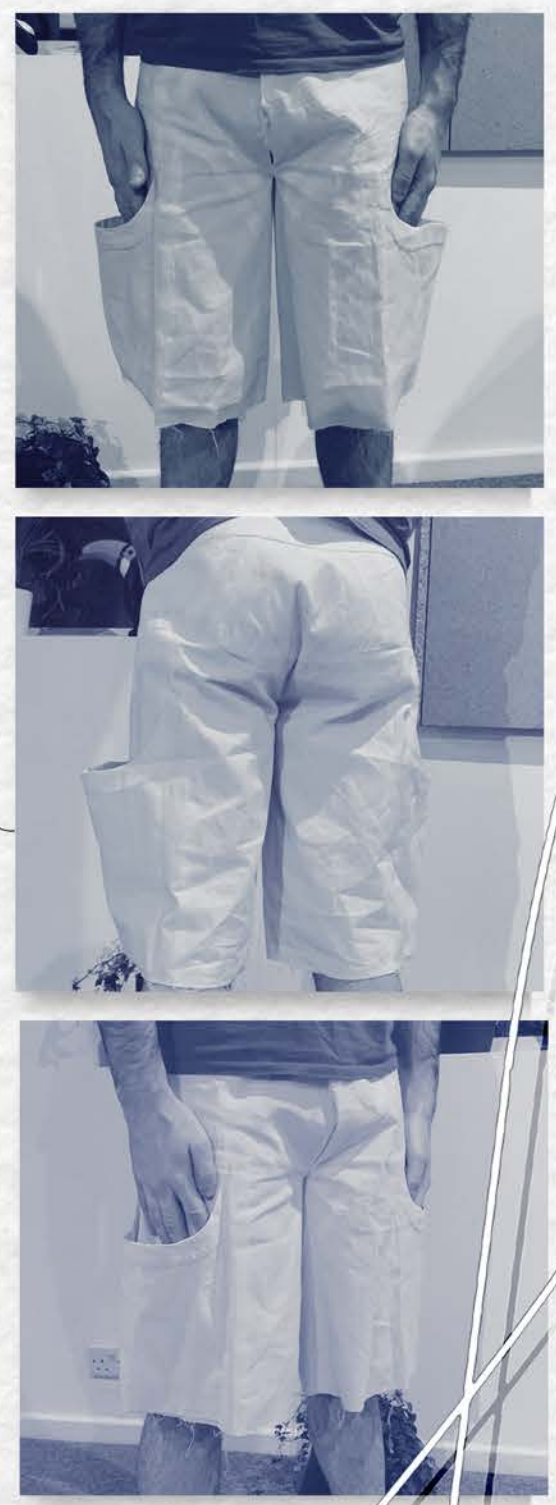
Calico



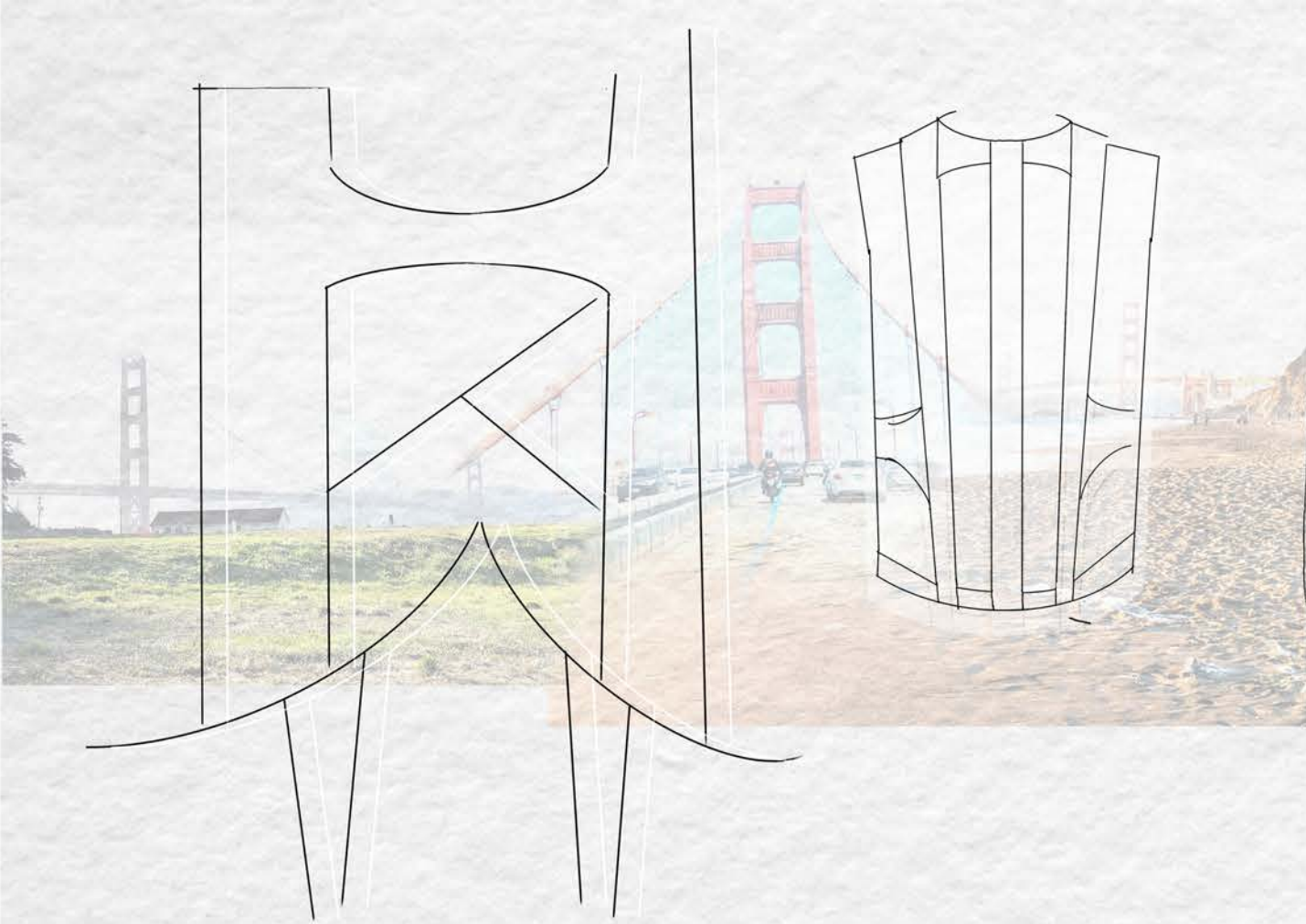
Alterations after fitting



First toile



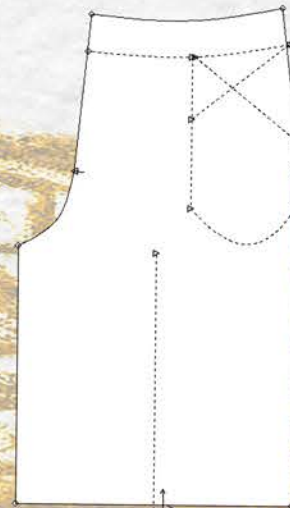
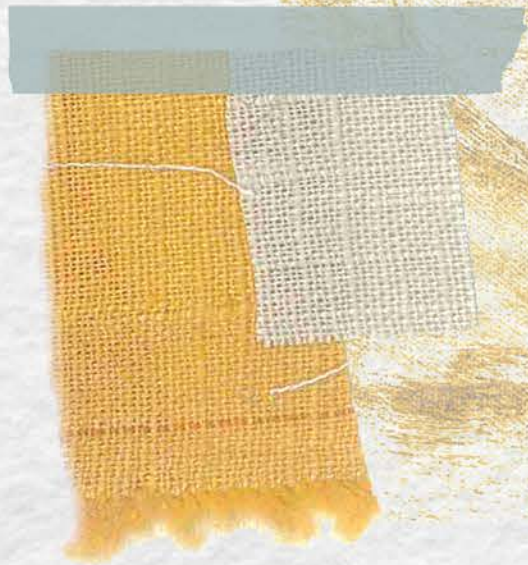




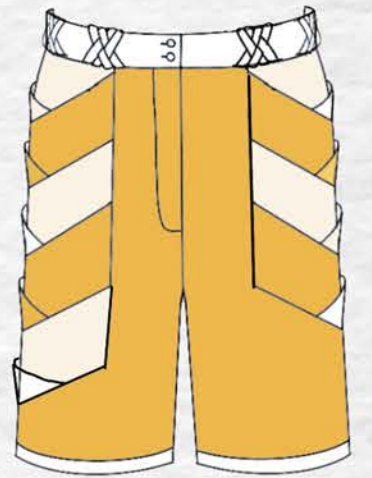
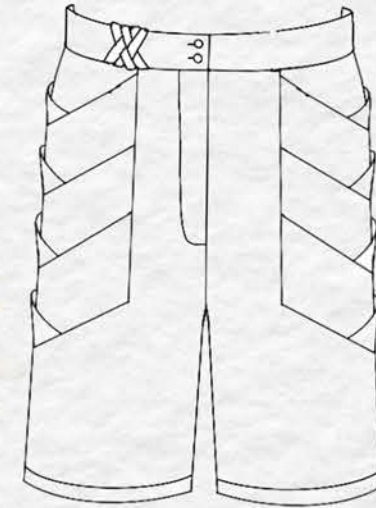
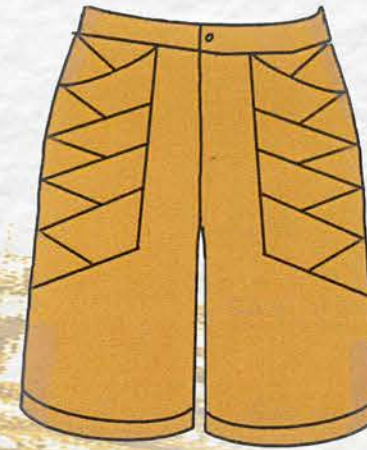


Layering of houses

Recurring motif in my travel photography



Layering pockets



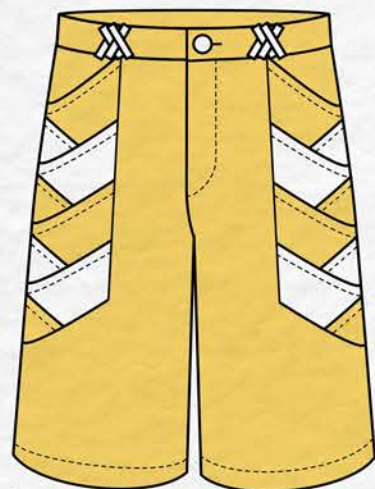
Collection: **Pier 24**

S/S 2025

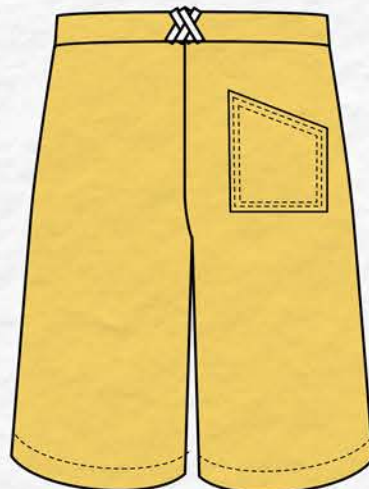
Style name - Explorer Shorts

Description - 100% Linen white and yellow shorts, with 18 pockets at the front, a patch pocket at the back, and woven belt loops

Front

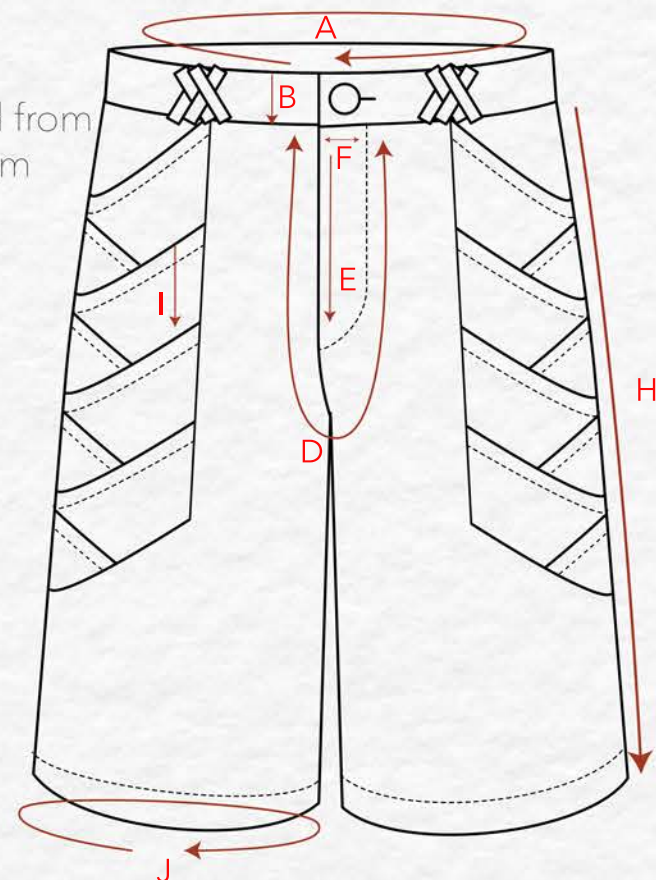


Back

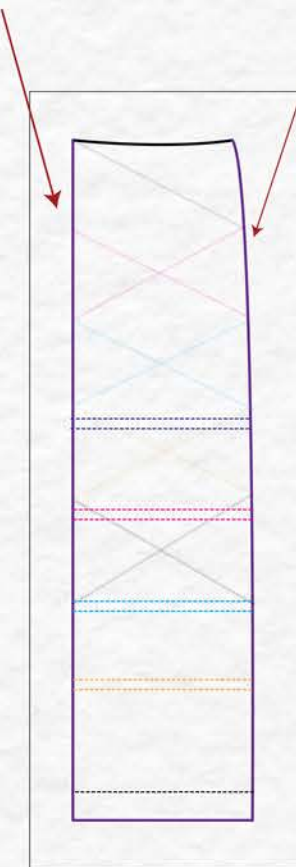


Waistband - finished with a sink stitch

Pockets stitched from top to bottom

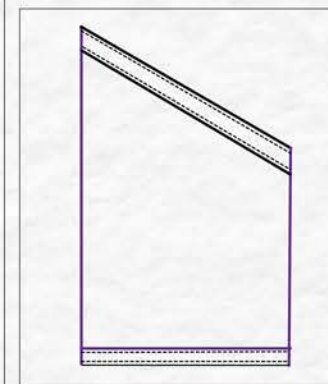


Overlocked after all the pockets are stitched in

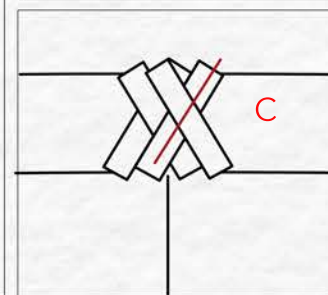


0.5 cm allowance to hold, stitch to back side seam - Closed seam, overlocked

Pocket overlocked at the bottom, turned up and top stitched on to pocket facing

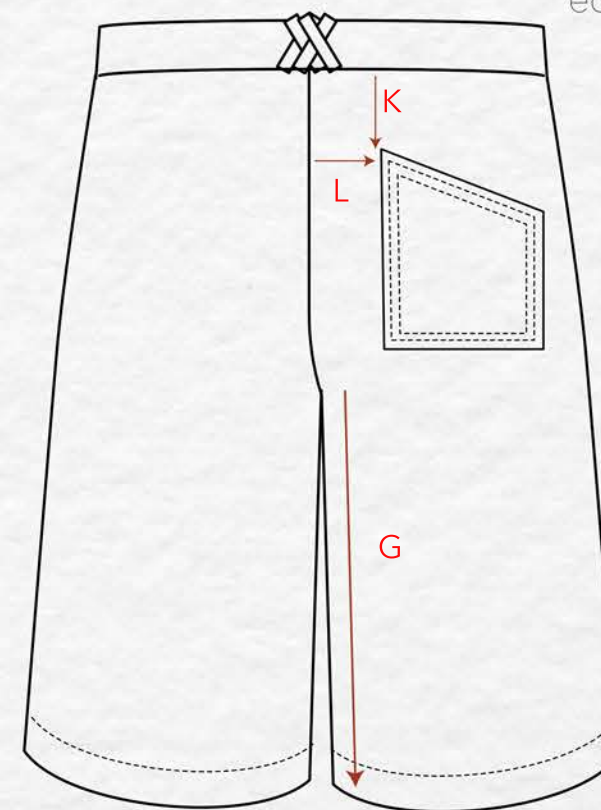


Pockets - bias tape stitched to 1 cm seam allowance, understitched 1/16", edge stitched on other end of bias tape



Last pocket is stitched to the edge of shorts, and hemmed

Back patch pocket - overlocked edges and top stitched 1/16" and 1/4"



Hem - Overlocked and turned by 2cm

Main Fabrics



Trim	Location	Amount Needed
	Waistband	20 x 7cm strips
	CF - Waistband	1 Button
	Fly	1 x 12 cm zip
	4 Front + 1 back Yellow Pocket openings	1.5 m
	4 Front White Pocket Openings	1.5 m

Reference	Point of Measurement	Measurement (cm)
A	Waistband circumference	108
B	Waistband Height	4
C	Belt loop length	5
D	Crotch	55
E	Fly Hight	12
F	Fly Width	4
G	Inseam	28
H	Side seam	47
I	Distance between pockets	6
J	Leg Opening	73.5
K	BK- Waistband to pocket	9
L	BK- Crotch to pocket	5

Manonary



